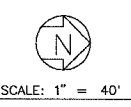
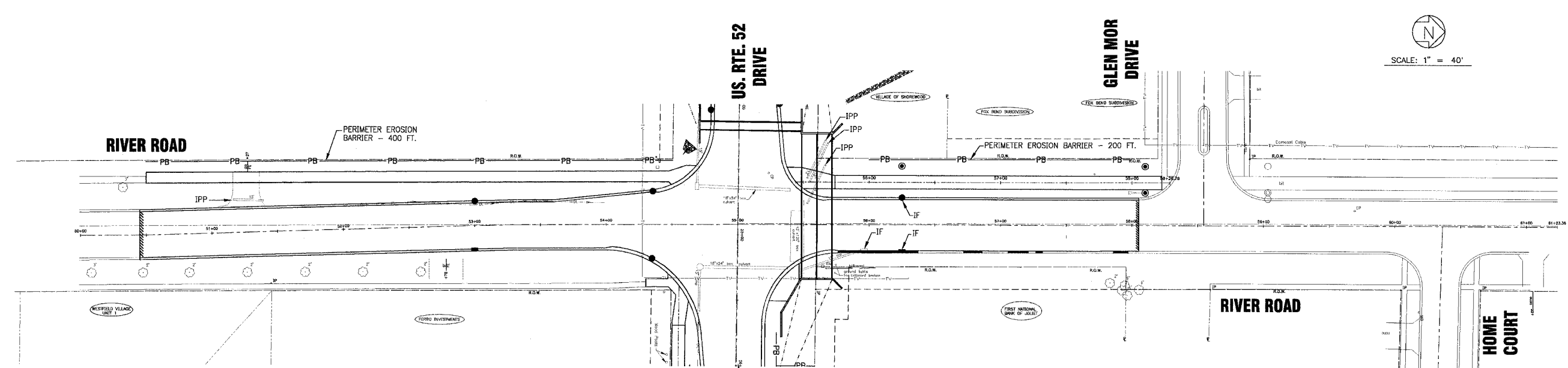


F.A.P. ROUTE NO.	SECTION	COUNTY	TOTAL SHEETS	SHEET NO.
0607	01-00014-00-FP	WILL.	85	36
STA.	TO STA.			
FED. ROAD DIST. NO.	ILLINOIS		FED. AID PROJECT CMF-0607 (070)	

CONTRACT NO. 83786



LEGEND

— DC —	TEMPORARY DITCH CHECKS
— PB —	PERIMETER EROSION BARRIER
IPP	INLET AND PIPE PROTECTION
IF	DRAINAGE STRUCTURE INLET FILTER

FOR CONTINUATION SEE SHIT. NO. 35

I:\SHRMD\010665\DWG\10665-EROS.dwg
 Plotted: 12-15-04 @ 11:04am By: 23766
 Copyright © 2004, by Baxter & Woodman, Inc.
 State of Illinois
 License No. 34-001121 - Expires 4-30-05

CONSULTANTS	REV. NO.	DATE	DESCRIPTION
	1	12-21-04	PER I.D.O.T. REVIEW
* REFER TO EQUIPMENT MANUFACTURER'S SHOP DRAWINGS			
DRAWING FILE:		PLOTTED BY:	



Baxter & Woodman
 Crystal Lake, Illinois 815.459.1280
 Burlington, Wisconsin 262.763.7834
 Mokena, Illinois 708.478.2090
 DeKalb, Illinois 815.787.3111
 Grayslake, Illinois 847.223.5088
 Rockford, Illinois 815.489.1551

VILLAGE OF SHOREWOOD, ILLINOIS
U.S. ROUTE 52 IMPROVEMENTS

TEMPORARY EROSION CONTROL PLAN
RIVER ROAD / NORTH RIVER ROAD

DESIGNED BY LDH	SCALE HORIZ: 1" = 40'
DRAWN BY LKB	PROJECT NO. 010665
CHECKED BY LDH	SHEET NO.
DATE 10-05-04	36 OF 85