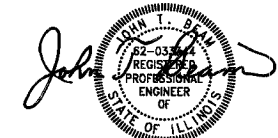
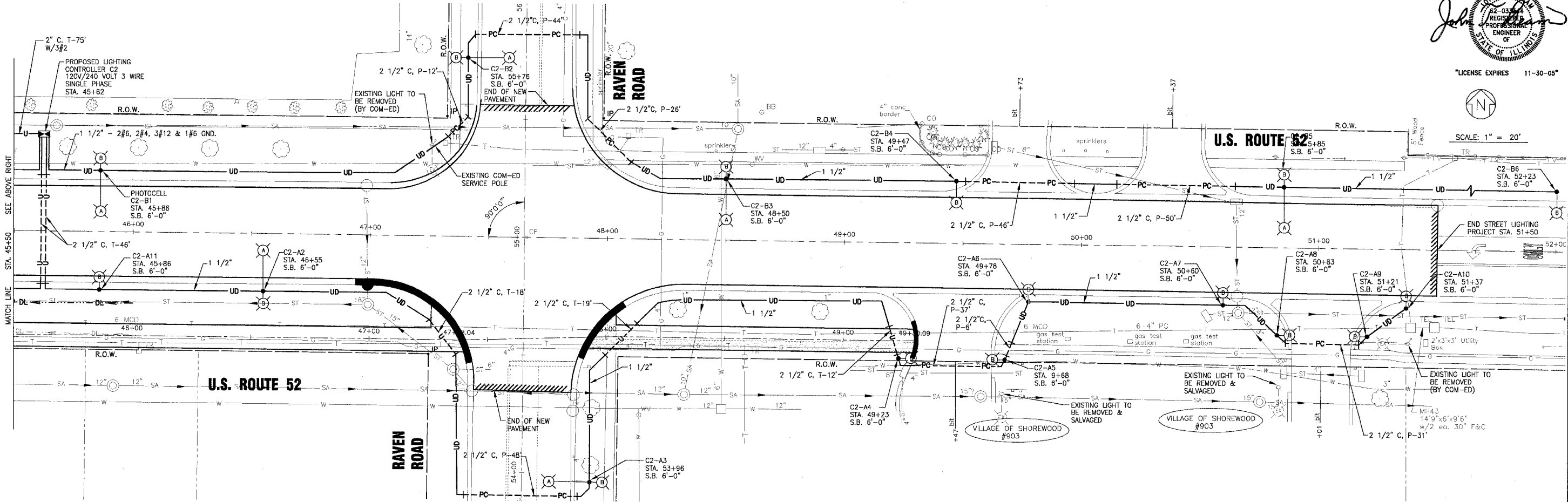
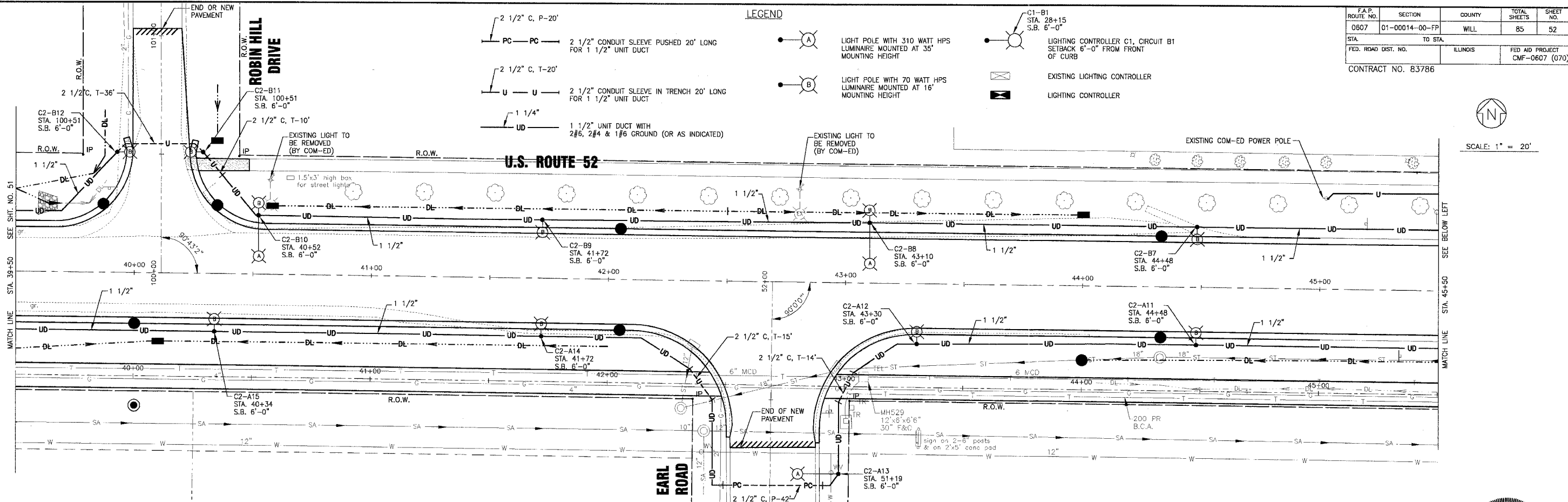


F.A.P. ROUTE NO.	SECTION	COUNTY	TOTAL SHEETS	SHEET NO.
0607	01-00014-00-FP	WILL	85	52
STA.	TO STA.	ILLINOIS	FED AID PROJECT	
			CMF-0607 (070)	

CONTRACT NO. 83786



SCALE: 1" = 20'



"LICENSE EXPIRES 11-30-05"



SCALE: 1" = 20'

C:\land Projects\2004\shored\016565\400\10585.GHT.dwg
 Plotted 12-23-04 @ 9:46am by J. Woodman, Inc.
 Copyright © 2004, by Baxter & Woodman, Inc.
 State of Illinois - Professional Design Firm
 License No. - 84-001121 - Expires 4-30-05

CONSULTANTS	REV. NO.	DATE	DESCRIPTION
	1	11-29-04	PER I.D.O.T. REVIEW
	2	12-21-04	PER I.D.O.T. REVIEW

DRAWING FILE: _____ PLOTTED BY: _____

BAXTER & WOODMAN
 Consulting Engineers

Baxter & Woodman
 Crystal Lake, Illinois 815.459.1260
 Burlington, Wisconsin 262.763.7894
 Mokena, Illinois 708.478.2090
 DeKalb, Illinois 815.787.3111
 Craystone, Illinois 847.223.5088
 Rockford, Illinois 815.489.1551

VILLAGE OF SHOREWOOD, ILLINOIS
U.S. ROUTE 52 IMPROVEMENTS

DESIGNED BY	JLR	SCALE	HORIZ: 1"=20'
DRAWN BY	UKB	PROJECT NO.	010665
CHECKED BY	JLR	SHEET NO.	52 OF 85
DATE	10-05-04		