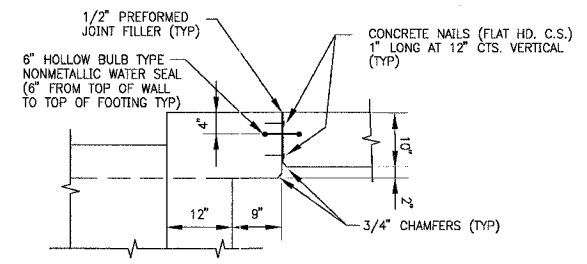
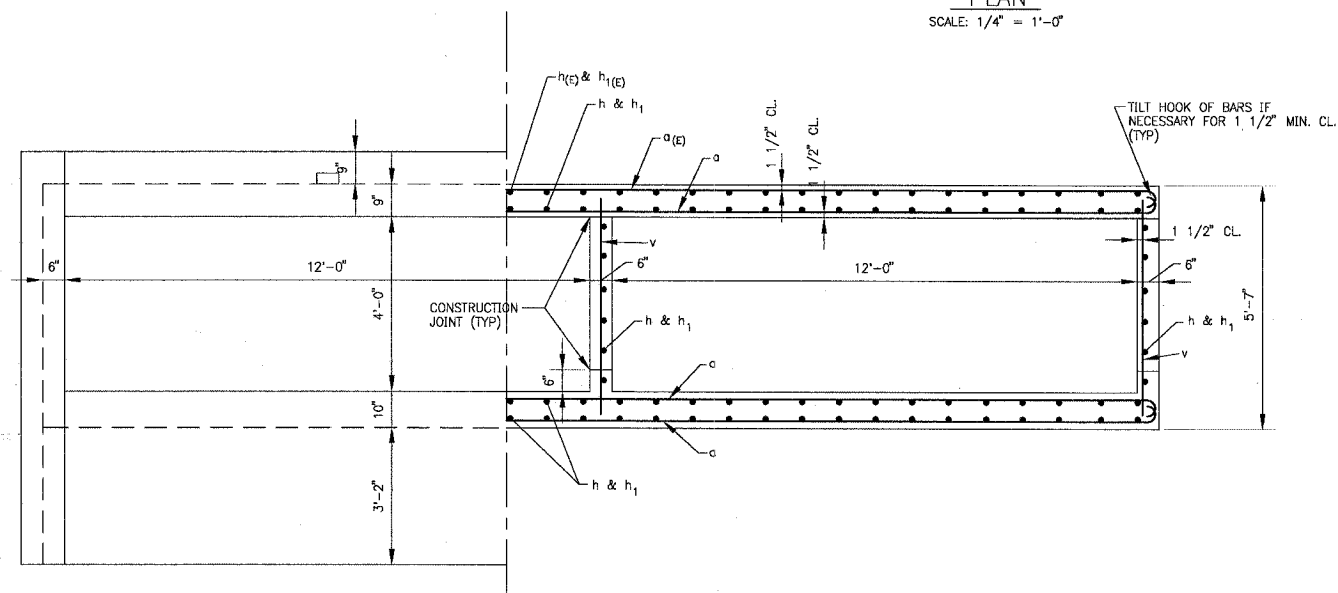
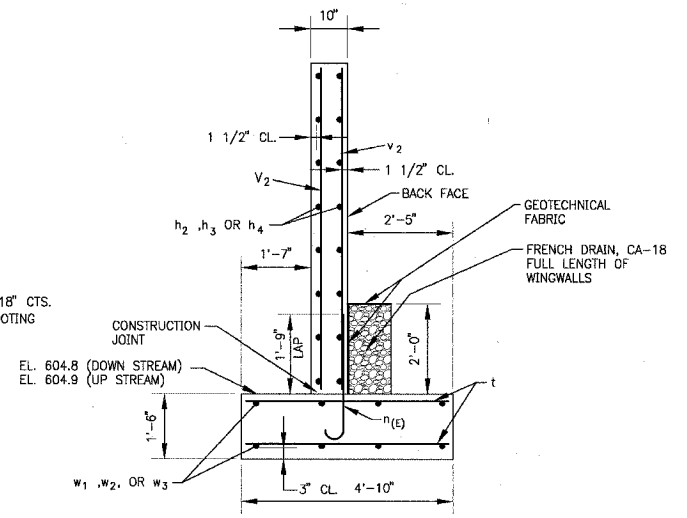
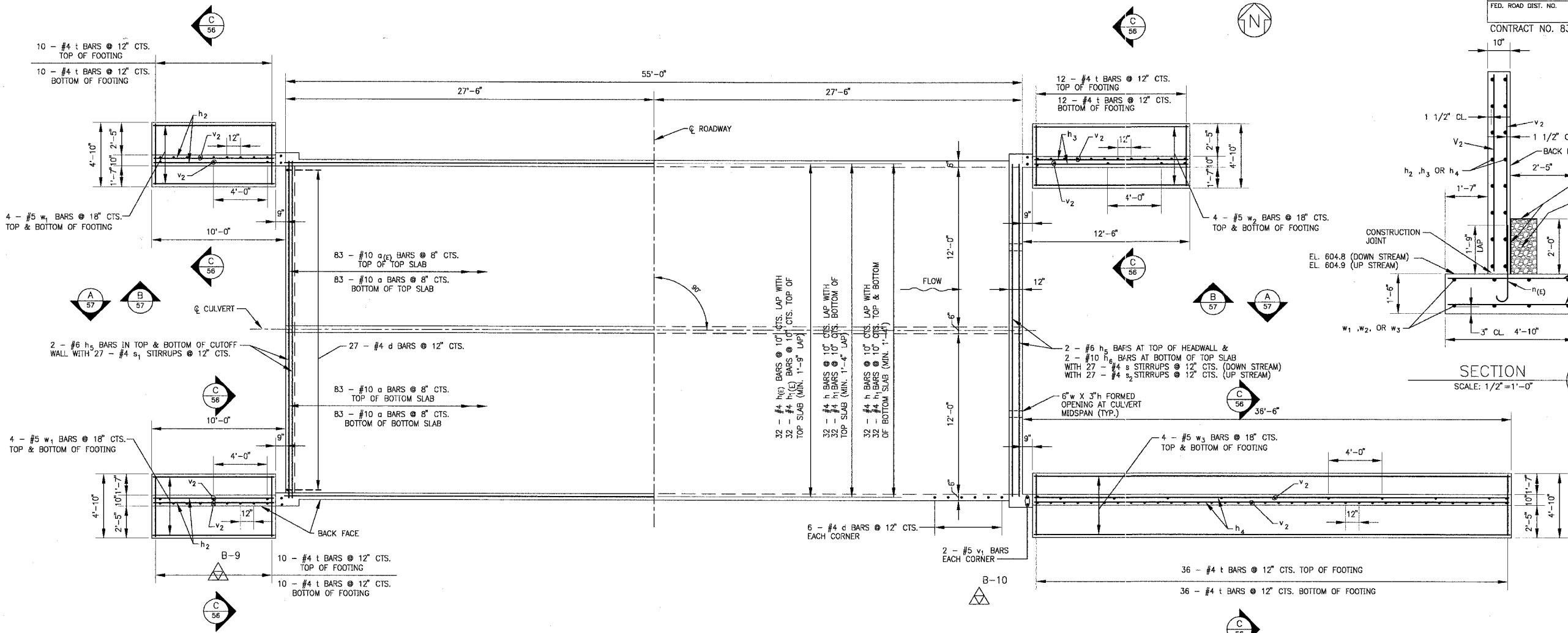


F.A.P. ROUTE NO.	SECTION	COUNTY	TOTAL SHEETS	SHEET NO.
0607	01-00014-00-FP	WILL	85	56
STA.	TO STA.			
FED. ROAD DIST. NO.	ILLINOIS	FED AID PROJECT	CMF-0607 (070)	

CONTRACT NO. 83786



CONSTRUCTION SPECIFICATIONS
 PERFORM WORK IN ACCORDANCE WITH THE ILLINOIS DEPARTMENT OF TRANSPORTATION STANDARD SPECIFICATIONS FOR ROAD AND BRIDGE CONSTRUCTION ADOPTED JANUARY 1, 2002, SUPPLEMENTAL SPECIFICATIONS AND REQUIRING SPECIAL PROVISIONS ADOPTED JANUARY 1, 2004 AND INSERTED SPECIAL PROVISIONS UPDATED MAY 6, 2004.

DESIGN STRESSES
 f_y = 60,000 P.S.I.
 f_c = 3,500 P.S.I.
 ALLOWABLE NET SOIL BEARING PRESSURE = 2,500 P.S.F. MINIMUM

LOADING HS20-44
 ALLOW 50 LB/SF FOR FUTURE WEARING SURFACE

NOTES:
 1. SEE GENERAL NOTES ON SHEET 58
 2. REINFORCEMENT BARS DESIGNATED (E) SHALL BE EPOXY COATED.

WATERWAY INFORMATION

DRAINAGE AREA	1.9	SQ. MILES
PROVIDED OPENING	96	SQ. FT.
DESIGN DISCHARGE	445	CFS
DESIGN CREATED HEAD	0.0	FT.
100-YR. DISCHARGE	550	CFS
100-YR. CREATED HEAD	0.0	FT.

COPYRIGHT © 2004, BY BAXTER & WOODMAN, INC.
 LICENSE NO. 151-20121 - EXPIRES 11/30/2003

CONSULTANTS	REV. NO.	DATE	DESCRIPTION
	1	12-21-04	PER IDOT REVIEW

DRAWING FILE: BOXCVLV.DWG
 PLOTTED BY: DEK 16/DEC/04 10:19

BAXTER & WOODMAN
 Consulting Engineers

Baxter & Woodman
 Crystal Lake, Illinois 815.459.1280
 Burlington, Wisconsin 262.763.7834
 Mokena, Illinois 708.478.2090
 DeKalb, Illinois 815.787.3111
 Grayslake, Illinois 847.223.6088
 Rockford, Illinois 815.489.1551

VILLAGE OF SHOREWOOD, ILLINOIS
U.S. ROUTE 52 IMPROVEMENTS

HAMMEL CREEK
BOX CULVERT @ STA. 36+74
PLAN AND DETAILS

DESIGNED BY	SCALE
BAB	AS NOTED
DRAWN BY	PROJECT NO.
DEK	010665
CHECKED BY	SHEET NO.
MHY	
DATE	
10-05-04	

56 OF 85