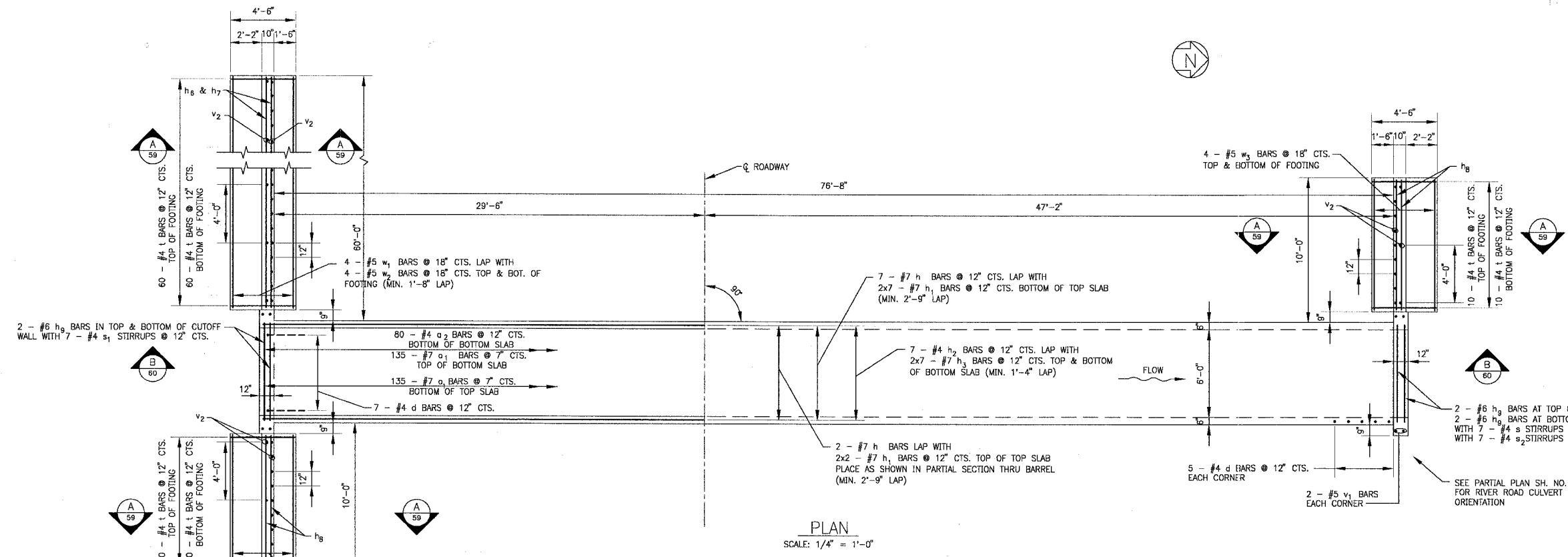


CONTRACT NO. 83786



PLAN
SCALE: 1/4" = 1'-0"

CONSTRUCTION SPECIFICATIONS
 PERFORM WORK IN ACCORDANCE WITH THE ILLINOIS DEPARTMENT OF TRANSPORTATION STANDARD SPECIFICATIONS FOR ROAD AND BRIDGE CONSTRUCTION ADOPTED JANUARY 1, 2002, SUPPLEMENTAL SPECIFICATIONS AND RECURRING SPECIAL PROVISIONS ADOPTED JANUARY 1, 2004 AND INSERTED SPECIAL PROVISIONS UPDATED MAY 6, 2004.

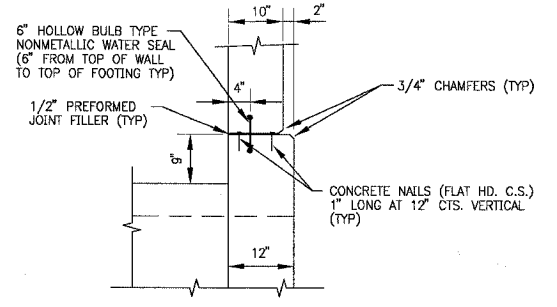
DESIGN STRESSES
 $f_y = 60,000$ P.S.I.
 $f'_c = 3,500$ P.S.I.
 ALLOWABLE NET SOIL BEARING PRESSURE = 2,500 P.S.F. MINIMUM

LOADING HS20-44
 ALLOW 50 LB/SF FOR FUTURE WEARING SURFACE

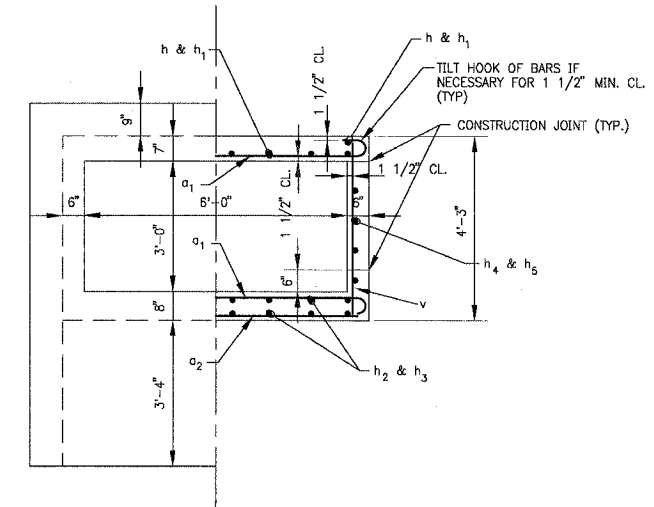
NOTES:
 1. SEE GENERAL NOTES ON SHEET 58
 2. BARS INDICATED THUS 12 x 4 - #5 ETC. INDICATES 12 LINES OF BARS WITH 4 LENGTHS PER LINE.

WATERWAY INFORMATION

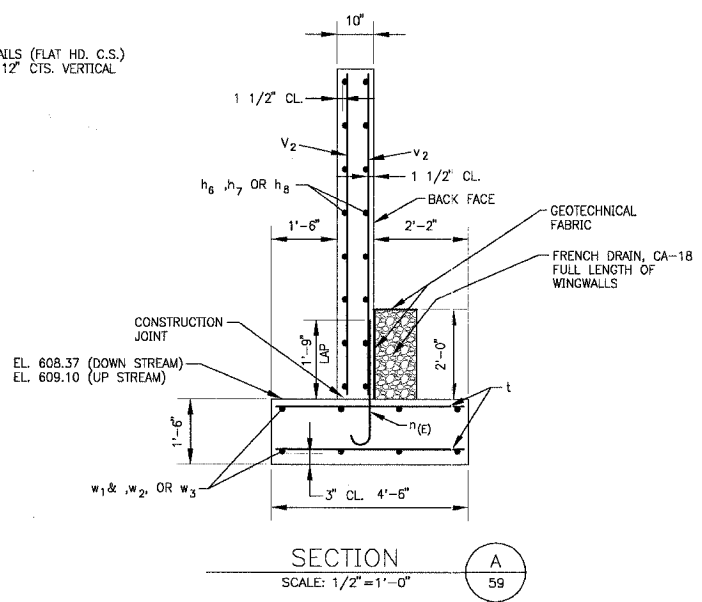
DRAINAGE AREA	0.13	SQ. MILES
PROVIDED OPENING	18	SQ. FT.
DESIGN DISCHARGE	66	CFS
DESIGN CREATED HEAD	1.8	FT.
100-YR. DISCHARGE	75	CFS
100-YR. CREATED HEAD	1.8	FT.



CORNER DETAIL
SCALE: 3/4" = 1'-0"



PARTIAL END ELEVATION SCALE: 1/2" = 1'-0"
 PARTIAL SECTION THRU BARREL (WINGWALL AND CUT OFF WALL NOT SHOWN) SCALE: 1/2" = 1'-0"



SECTION
SCALE: 1/2" = 1'-0"

COPYRIGHT © 2004 BY BAXTER & WOODMAN, INC.
 LICENSE NO. 184-00131 - EXPIRES 12/31/2003

CONSULTANTS	REV. NO.	DATE	DESCRIPTION
	1	12-21-04	PER IDOT REVIEW

DRAWING FILE: BOXCULV-2.DWG
 PLOTTED BY: DEK 16/DEC/04 10:27

BAXTER & WOODMAN
 Consulting Engineers

Baxter & Woodman
 Crystal Lake, Illinois 815.459.1280
 Burlington, Wisconsin 262.763.7834
 Mokena, Illinois 708.478.2090
 DeKalb, Illinois 815.787.3111
 Grayslake, Illinois 847.223.5088
 Rockford, Illinois 815.488.1551

VILLAGE OF SHOREWOOD, ILLINOIS
U.S. ROUTE 52 IMPROVEMENTS

U.S. RTE. 52
BOX CULVERT @ STA. 24+13.62
PLAN AND DETAILS

DESIGNED BY BAB	SCALE AS NOTED
DRAWN BY DEK	PROJECT NO. 010665
CHECKED BY MHT	SHEET NO.
DATE 10-05-04	59 OF 85