

CONTRACT NO. 83786

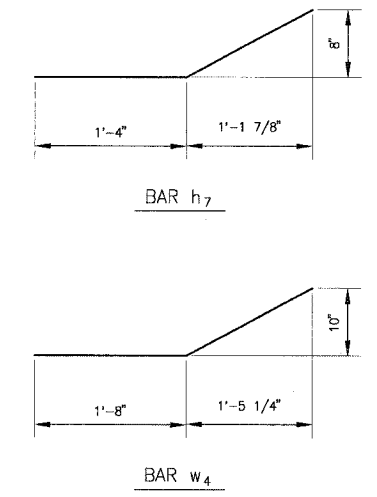
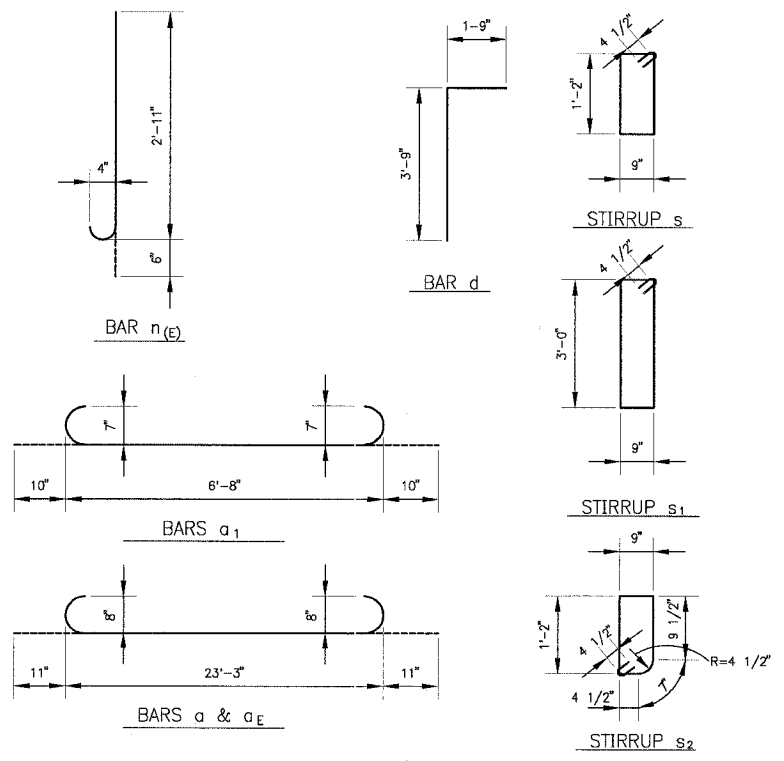
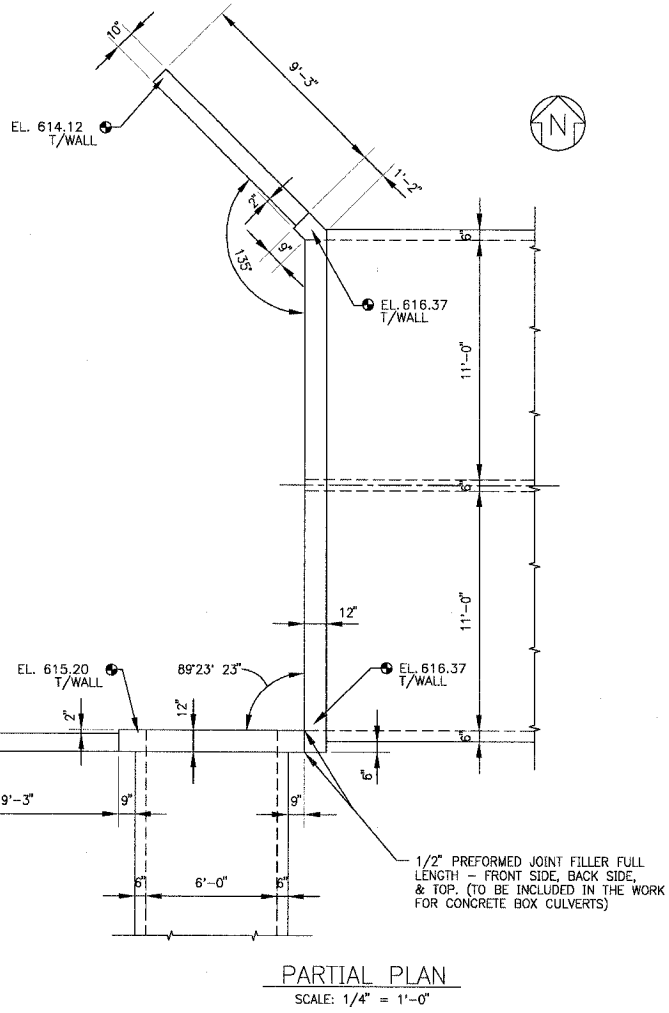
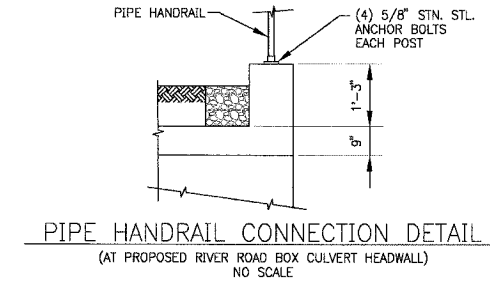
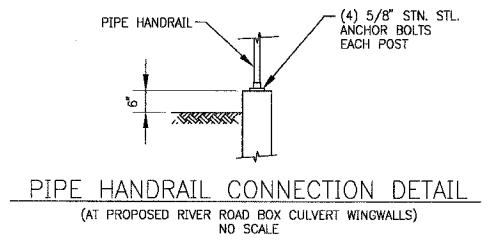
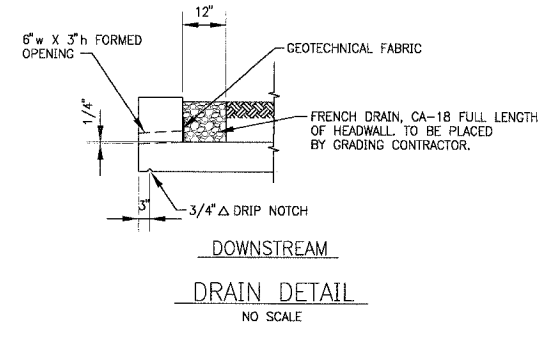
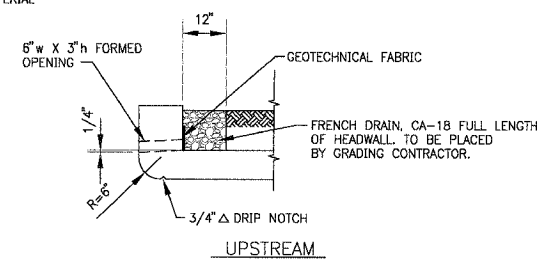
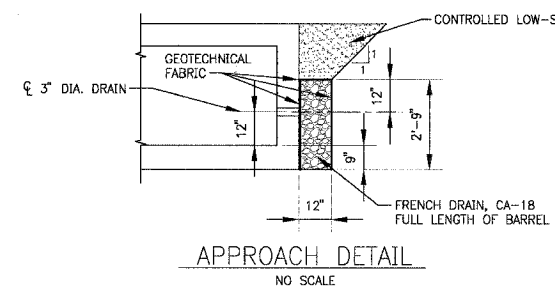
U.S. ROUTE 52 BOX CULVERTS

CULVERT REINFORCEMENT				
Bar	No.	Size	Length	Shape
a <sub>1</sub>	270	7	8'-4"	[Diagram]
a <sub>2</sub>	80	4	6'-9"	
d	34	4	5'-6"	[Diagram]
h	9	7	40'-0"	
h <sub>1</sub>	18	7	21'-11"	[Diagram]
h <sub>2</sub>	14	4	20'-8"	
h <sub>3</sub>	12	5	40'-0"	[Diagram]
h <sub>4</sub>	24	5	20'-10"	
h <sub>5</sub>	16	4	40'-0"	[Diagram]
h <sub>6</sub>	16	4	20'-4"	
h <sub>7</sub>	32	4	9'-0"	[Diagram]
h <sub>8</sub>	16	6	6'-9"	
n <sub>cp</sub>	80	4	3'-5"	[Diagram]
s	7	4	4'-7"	
s <sub>1</sub>	14	4	8'-3"	[Diagram]
s <sub>2</sub>	7	4	4'-5"	
t	160	4	4'-3"	[Diagram]
v	212	4	3'-11"	
v <sub>1</sub>	8	5	8'-1"	[Diagram]
v <sub>2</sub>	101	4	6'-8"	
w <sub>1</sub>	8	5	40'-0"	[Diagram]
w <sub>2</sub>	8	5	20'-8"	
w <sub>3</sub>	16	5	9'-0"	[Diagram]
w <sub>4</sub>	16	5	9'-0"	

BILL OF MATERIALS		
ITEM	UNIT	QUANTITY
CONCRETE BOX CULVERTS	CU. YD.	73
REINFORCEMENT BARS, EPOXY COATED	LB.	200
REINFORCEMENT BARS	LB.	11500
CONTROLLED LOW-STRENGTH MATERIAL	CU. YD.	15
FRENCH DRAIN, CA-18	CU. YD.	22

RIVER ROAD BOX CULVERT				
CULVERT REINFORCEMENT				
Bar	No.	Size	Length	Shape
a	579	8	25'-1"	[Diagram]
a <sub>cp</sub>	193	8	25'-1"	
d	70	4	5'-6"	[Diagram]
h	210	4	40'-0"	
h <sub>1</sub>	105	4	34'-8"	[Diagram]
h <sub>2</sub>	36	4	9'-0"	
h <sub>3</sub>	18	4	30'-1"	[Diagram]
h <sub>4</sub>	18	4	18'-9"	
h <sub>5</sub>	12	6	23'-3"	[Diagram]
h <sub>6</sub>	4	8	23'-3"	
h <sub>7</sub>	18	4	2'-9"	[Diagram]
h <sub>cp</sub>	58	4	40'-0"	
h <sub>RED</sub>	29	4	35'-6"	[Diagram]
n <sub>cp</sub>	68	4	3'-5"	
s	24	4	4'-7"	[Diagram]
s <sub>1</sub>	48	4	8'-3"	
s <sub>2</sub>	24	4	4'-5"	[Diagram]
t	144	4	4'-10"	
v	450	4	5'-3"	[Diagram]
v <sub>1</sub>	8	5	9'-3"	
v <sub>2</sub>	86	4	7'-9"	[Diagram]
w <sub>1</sub>	16	5	8'-11"	
w <sub>2</sub>	8	5	29'-0"	[Diagram]
w <sub>3</sub>	8	5	19'-0"	
w <sub>4</sub>	8	5	3'-4"	[Diagram]

BILL OF MATERIALS		
ITEM	UNIT	QUANTITY
CONCRETE BOX CULVERTS	CU. YD.	221
REINFORCEMENT BARS, EPOXY COATED	LB.	15400
REINFORCEMENT BARS	LB.	52500
CONTROLLED LOW-STRENGTH MATERIAL	CU. YD.	57
FRENCH DRAIN, CA-18	CU. YD.	29



SEE GENERAL NOTES SH. 58

COPYRIGHT © 2001 BY BAXTER & WOODMAN, INC.  
 LICENSE NO. 138-00121 PHOENIX, AZ 85016

CONSULTANTS	REV. NO.	DATE	DESCRIPTION
	1	12-21-04	PER IDOT REVIEW

\* REFER TO EQUIPMENT MANUFACTURER'S SHOP DRAWINGS

DRAWING FILE: BOXCULV-3.DWG PLOTTED BY: DEK 16/DEC/04 08:48

**BAXTER & WOODMAN**  
 Consulting Engineers

**Baxter & Woodman**  
 Crystal Lake, Illinois 815.459.1260  
 Burlington, Wisconsin 262.763.7834  
 Mokena, Illinois 708.478.2090  
 DeKalb, Illinois 815.787.3111  
 Graystone, Illinois 847.223.5088  
 Rockford, Illinois 815.489.1551

**VILLAGE OF SHOREWOOD, ILLINOIS**  
**U.S. ROUTE 52 IMPROVEMENTS**

**U.S. RTE. 52 & RIVER ROAD**  
**BOX CULVERTS**  
**DETAILS**

DESIGNED BY	SCALE
BAB	AS NOTED
DRAWN BY	PROJECT NO.
DEK	010665
CHECKED BY	SHEET NO.
MHY	
DATE	
10-05-04	<b>63 OF 85</b>