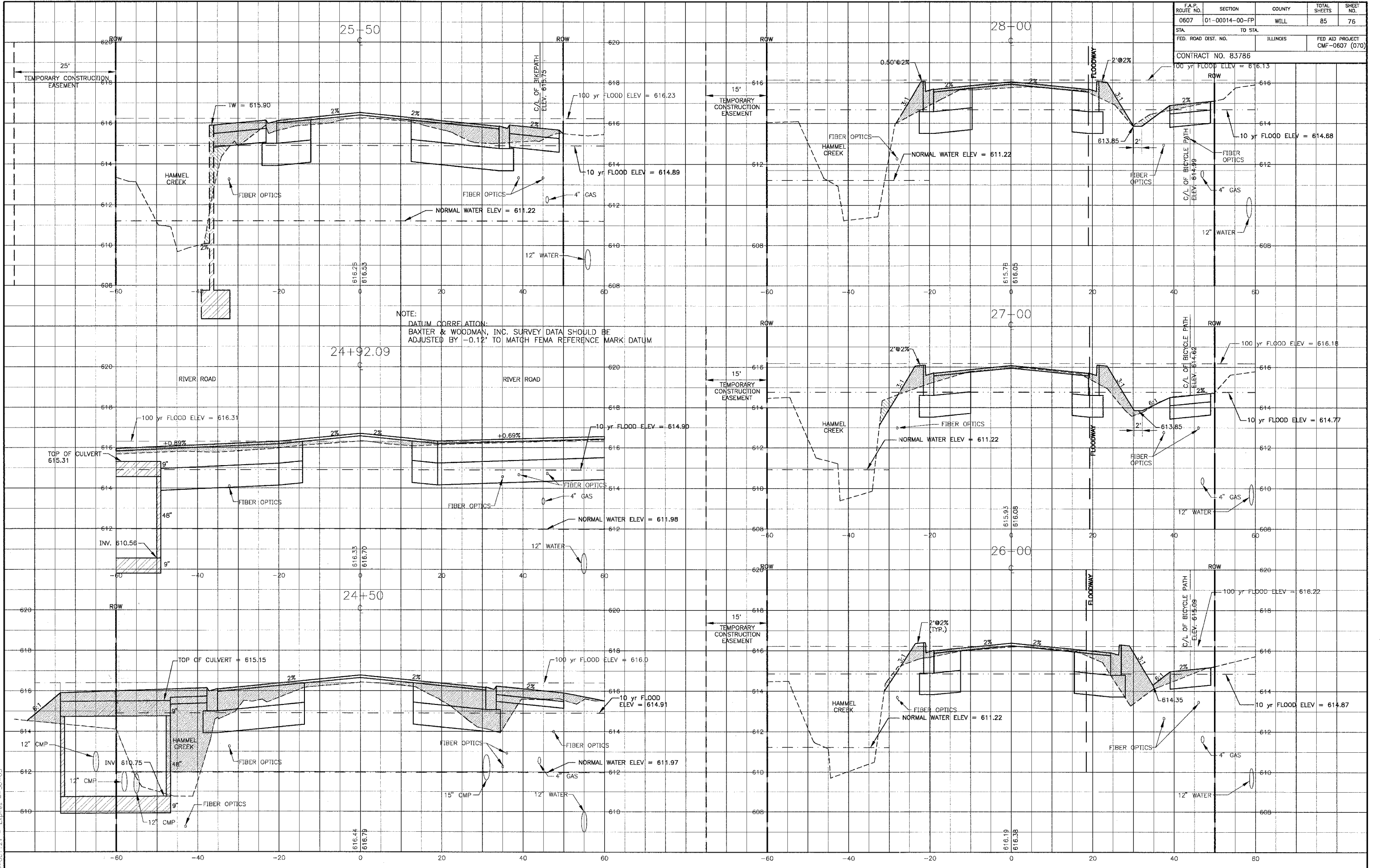


F.A.P. ROUTE NO.	SECTION	COUNTY	TOTAL SHEETS	SHEET NO.
0607	01-00014-00-FP	WILL	85	76
STA.	TO STA.			
	ILLINOIS		FED AID PROJECT	
FED. ROAD DIST. NO.			CMF-0607 (070)	
CONTRACT NO. 83786				



NOTE:
 DATUM CORRECTION:
 BAXTER & WOODMAN, INC. SURVEY DATA SHOULD BE
 ADJUSTED BY -0.12' TO MATCH FEMA REFERENCE MARK DATUM

I:\SHRIMP\010665\DWGS\T0565-YSEC.dwg
 Plotted: 12-20-04 @ 12:26pm By: 231jub
 Copyright © 2004, By Baxter & Woodman, Inc.
 State of Illinois - Professional Design Firm
 License No. - 184-001121 - Expires 4-30-05

CONSULTANTS	REV. NO.	DATE	DESCRIPTION
	1	12-21-04	PER I.D.O.T. REVIEW

* REFER TO EQUIPMENT MANUFACTURER'S SHOP DRAWINGS



Baxter & Woodman
 Crystal Lake, Illinois 815.459.1260
 Burlington, Wisconsin 262.763.7834
 Mokena, Illinois 708.478.2090
 DeKalb, Illinois 815.787.9111
 Graylake, Illinois 815.223.6088
 Rockford, Illinois 815.489.1551

VILLAGE OF SHOREWOOD, ILLINOIS
U.S. ROUTE 52 IMPROVEMENTS

CROSS SECTIONS
U.S. ROUTE 52
STA. 24+50 TO STA. 28+00

DESIGNED BY	SCALE VERT: 1"=2'
DRAWN BY	HORIZ: 1"=10'
CHECKED BY	PROJECT NO.
DATE	010665
	SHEET NO.
	76 OF 85