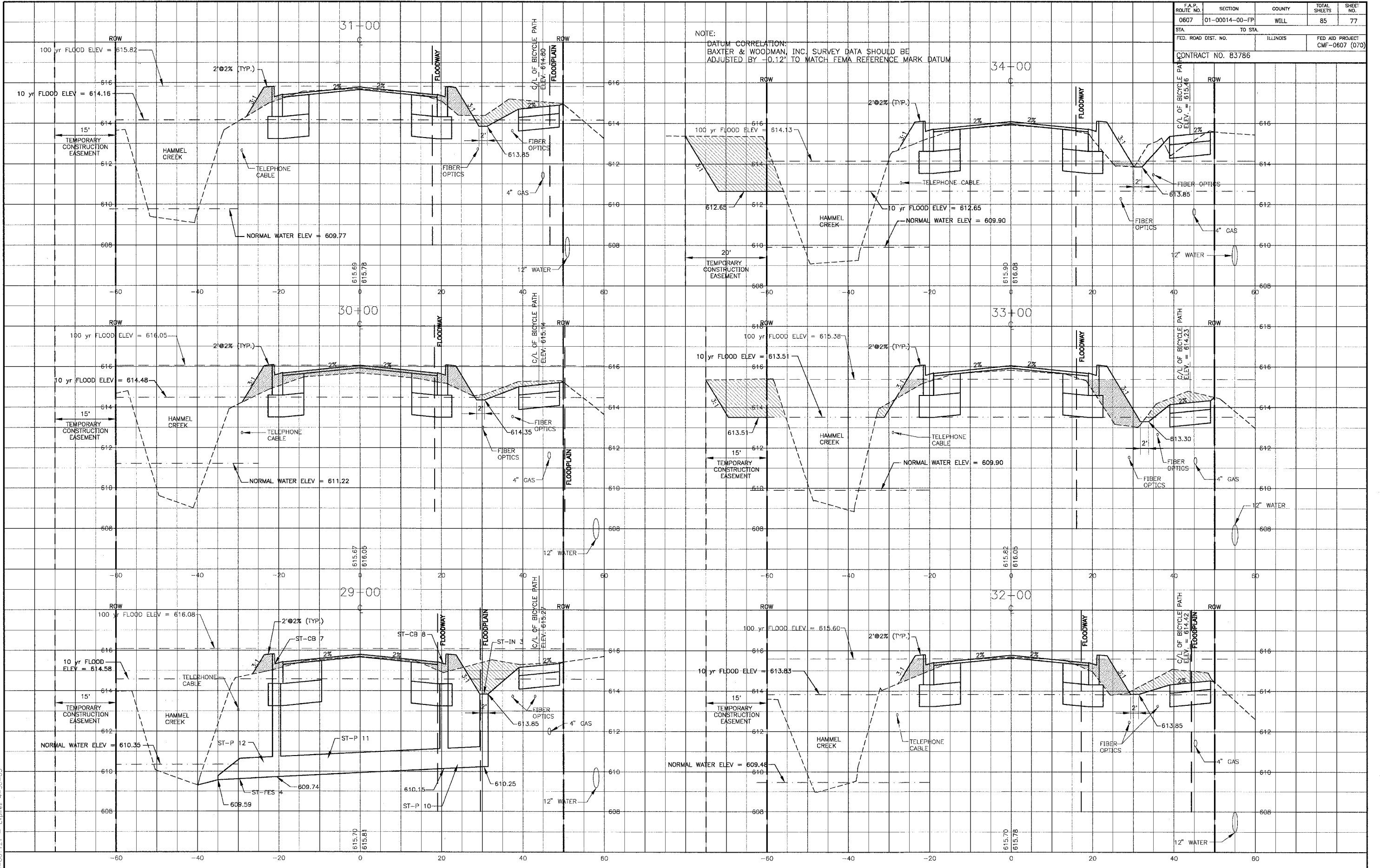


F.A.P. NO.	SECTION	COUNTY	TOTAL SHEETS	SHEET NO.
0607	01-00014-00-FP	WILL	85	77
STA.	TO STA.			
FED. ROAD DIST. NO.	ILLINOIS		FED AID PROJECT	
			CMF-0607 (070)	
CONTRACT NO. B3786				

NOTE:
 DATUM CORRELATION:
 BAXTER & WOODMAN, INC. SURVEY DATA SHOULD BE
 ADJUSTED BY -0.12' TO MATCH FEMA REFERENCE MARK DATUM



I:\SHERWIN\01\0665\DWG\10665-YSEC.dwg
 Plotted: 12-20-04 @ 4:17pm By: 231jhb
 Copyright © 2004, By Baxter & Woodman, Inc.
 State of Illinois - Professional Design Firm
 License No. 134-001121 - Expires 4-30-05

CONSULTANTS	REV. NO.	DATE	DESCRIPTION
	1	12-21-04	PER I.D.O.T. REVIEW
* REFER TO EQUIPMENT MANUFACTURER'S SHOP DRAWINGS			

DRAWING FILE: _____ PLOTTED BY: _____



Baxter & Woodman
 Crystal Lake, Illinois 815.459.1260
 Burlington, Wisconsin 262.763.7834
 Mokena, Illinois 708.478.2090
 DeKalb, Illinois 815.787.3111
 Grayslake, Illinois 847.223.5088
 Rockford, Illinois 815.489.1551

VILLAGE OF SHOREWOOD, ILLINOIS
U.S. ROUTE 52 IMPROVEMENTS

CROSS SECTIONS
U.S. ROUTE 52
STA. 29+00 TO STA. 34+00

DESIGNED BY	SCALE VERT: 1"=2'
LDH	HORIZ: 1"=10'
DRAWN BY	PROJECT NO.
UKB	010665
CHECKED BY	SHEET NO.
LDH	77 OF 85
DATE	
10-05-04	