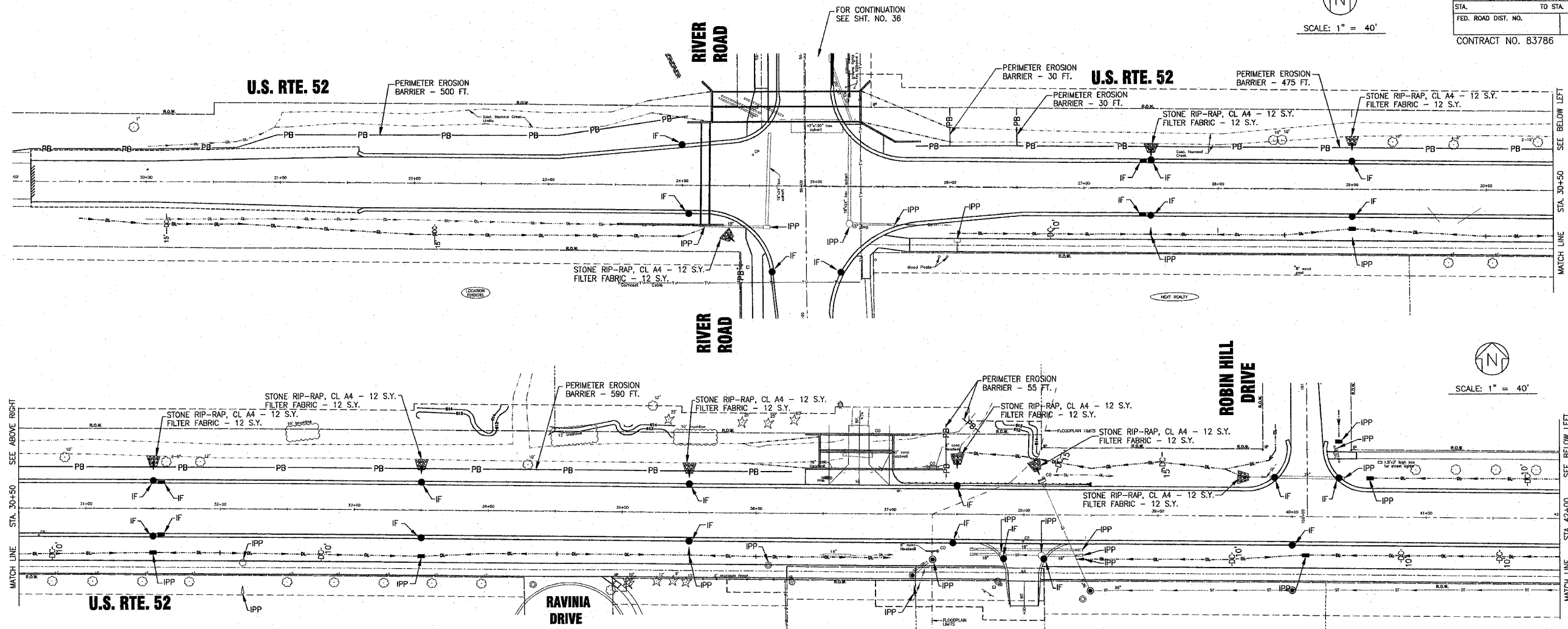


|                     |                |        |                 |           |
|---------------------|----------------|--------|-----------------|-----------|
| F.A.P. ROUTE NO.    | SECTION        | COUNTY | TOTAL SHEETS    | SHEET NO. |
| 0607                | 01-00014-00-FP | WILL   | 85              | 35        |
| STA. TO STA.        | ILLINOIS       |        | FED AID PROJECT |           |
| FED. ROAD DIST. NO. |                |        | CMF-0607 (070)  |           |
| CONTRACT NO. 83786  |                |        |                 |           |

SCALE: 1" = 40'



SCHEDULE OF EROSION CONTROL QUANTITIES

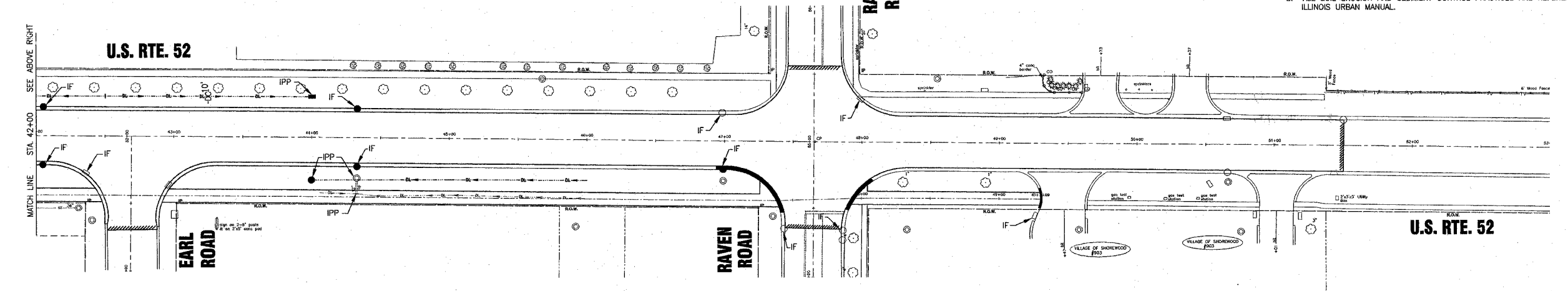
|                                    |         |      |
|------------------------------------|---------|------|
| PERIMETER EROSION BARRIER          | FOOT    | 2280 |
| TEMPORARY DITCH CHECKS             | EACH    | 12   |
| INLET AND PIPE PROTECTION          | EACH    | 31   |
| STONE RIP-RAP, CLASS A4            | SQ. YD. | 106  |
| FILTER FABRIC FOR USE WITH RIP-RAP | SQ. YD. | 106  |
| INLET FILTERS                      | EACH    | 39   |

LEGEND

|     |                                 |
|-----|---------------------------------|
| DC  | TEMPORARY DITCH CHECKS          |
| PB  | PERIMETER EROSION BARRIER       |
| IPP | INLET AND PIPE PROTECTION       |
| IF  | DRAINAGE STRUCTURE INLET FILTER |

SOIL EROSION AND SEDIMENT CONTROL NOTES

- SOIL EROSION AND SEDIMENT CONTROL FEATURES SHALL BE CONSTRUCTED PRIOR TO THE COMMENCEMENT OF UPLAND DISTURBANCE.
- ALL STORM SEWER FACILITIES THAT ARE OR WILL BE FUNCTIONING DURING CONSTRUCTION SHALL BE PROTECTED, FILTERED, OR OTHERWISE TREATED TO REMOVE SEDIMENT.
- ALL TEMPORARY AND PERMANENT EROSION CONTROL MEASURES MUST BE MAINTAINED AND REPAIRED AS NEEDED. THE GENERAL CONTRACTOR WILL BE RESPONSIBLE FOR INSPECTION AND REPAIR DURING CONSTRUCTION.
- INLET AND PIPE PROTECTION SHALL BE PLACED AROUND ALL DRAINAGE STRUCTURES WITH OPEN GRATES OUTSIDE BACK OF CURB IN ACCORDANCE WITH SECTION 280 OF THE STANDARD SPECIFICATIONS AND THE LATEST VERSION OF STANDARD 280001.
- THE SOIL AND WATER CONSERVATION DISTRICT IS RESPONSIBLE FOR CONDUCTING SITE VISITS AND VERIFYING THAT THE PRACTICES ARE WORKING PROPERLY AND DETERMINE IF ADDITIONAL PRACTICES ARE NEEDED FOR BETTER SOIL EROSION AND SEDIMENT CONTROL. IF ADDITIONAL PRACTICES ARE DEEMED NECESSARY BY THE SWCD THE CONTRACTOR WILL IMPLEMENT THE PRACTICES IN A TIMELY MANNER.
- THE WILL/SOUTH COOK SOIL AND WATER CONSERVATION DISTRICT MUST BE NOTIFIED ONE WEEK PRIOR TO THE PRE-CONSTRUCTION CONFERENCE, ONE WEEK PRIOR TO THE COMMENCEMENT OF LAND DISTURBING ACTIVITIES, AND ONE WEEK PRIOR TO FINAL INSPECTION.
- THE SOIL EROSION AND SEDIMENT CONTROL PRACTICES WILL BE INSPECTED WEEKLY AND AFTER 1/2 INCH OF RAIN OR MORE BY THE INDIVIDUAL ON SITE IN CHARGE OF SOIL EROSION AND SEDIMENT CONTROL DURING CONSTRUCTION OF THE PROJECT.
- ALL SOIL EROSION AND SEDIMENT CONTROL PRACTICES ARE REFERENCED FROM THE ILLINOIS URBAN MANUAL.



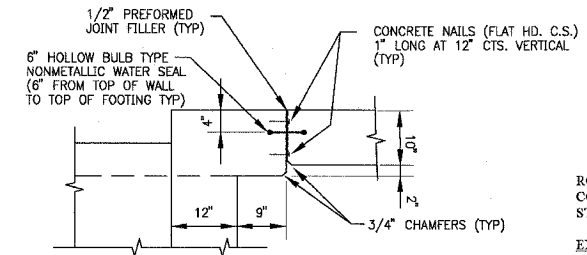
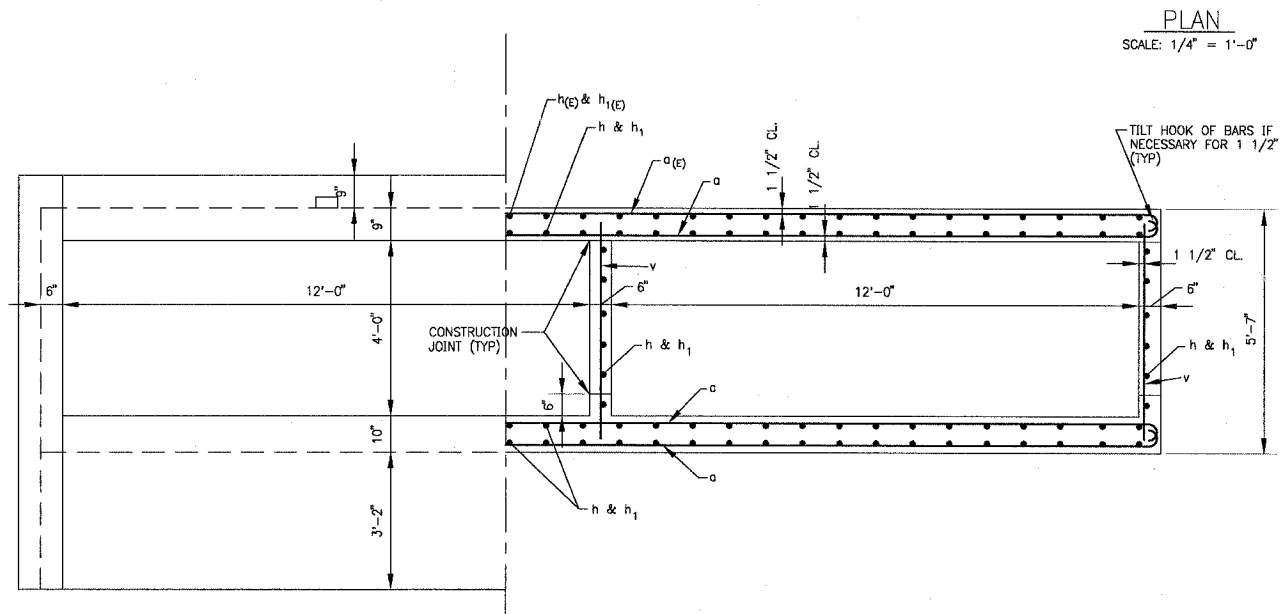
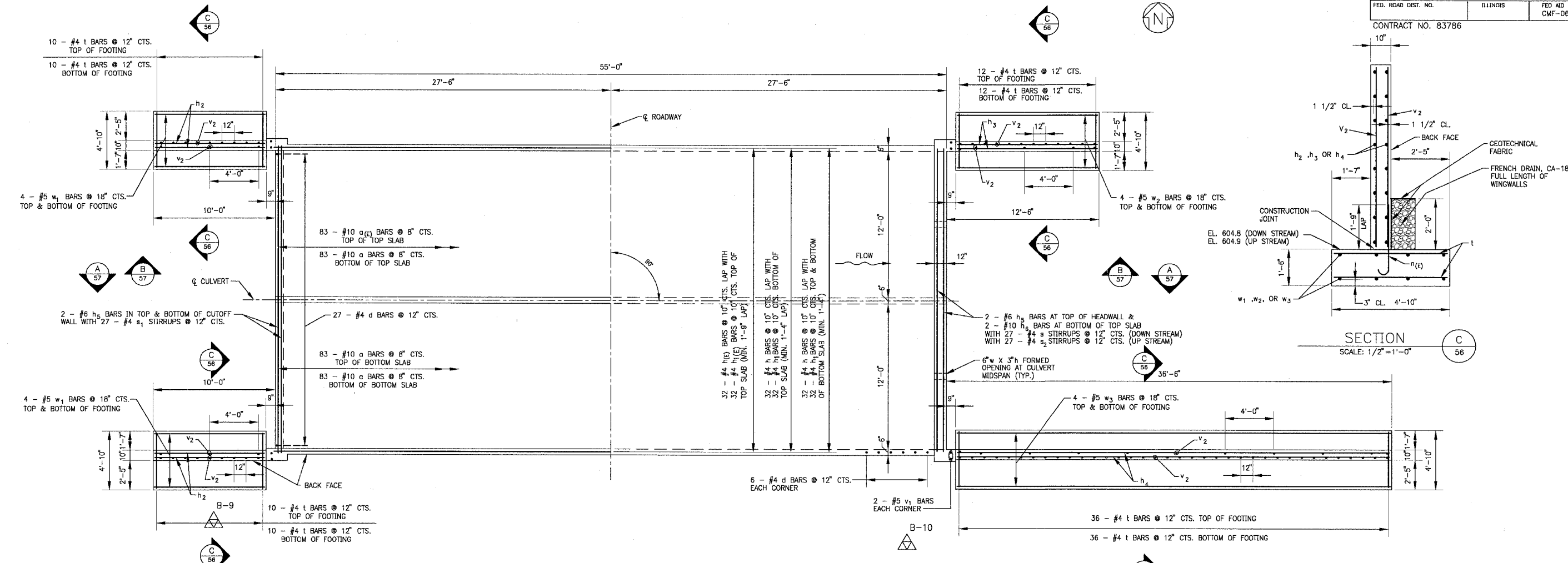
SCALE: 1" = 40'

I:\SHRWD\010665\DWGS\10665-FROS.dwg  
 Plotted: 3-31-05 @ 11:13am By: 231ukb  
 Copyright © 2004, By Baxter & Woodman, Inc.  
 State of Illinois - Professional Design Firm  
 License No. - 184-001121 - Expires 4-30-05

|             |          |          |                     |          |  |  |  |             |               |
|-------------|----------|----------|---------------------|----------|--|--|--|-------------|---------------|
| CONSULTANTS | REV. NO. | DATE     | DESCRIPTION         |          | <b>Baxter &amp; Woodman</b><br>Crystal Lake, Illinois 815.459.1260<br>Burlington, Wisconsin 262.788.7834<br>Mokena, Illinois 708.478.2090<br>DeKalb, Illinois 815.787.3111<br>Graylake, Illinois 847.223.5088<br>Rockford, Illinois 815.489.1551 | <b>VILLAGE OF SHOREWOOD, ILLINOIS</b><br><b>U.S. ROUTE 52 IMPROVEMENTS</b> | <b>TEMPORARY EROSION CONTROL PLAN</b><br><b>U.S. RTE. 52</b> | DESIGNED BY | SCALE         |
|             | 1        | 12-21-04 | PER I.D.O.T. REVIEW |          |  |  |  | LDH         | HORIZ: 1"=40' |
|             | 2        | 4-5-05   |                     | UKB      | PROJECT NO.  |  |  |             |               |
|             |          |          |                     | LDH      | 010665   |  |  |             |               |
|             |          |          |                     | DATE     | SHEET NO.  |  |  |             |               |
|             |          |          |                     | 10-05-04 | <b>35 OF 85</b>  |  |  |             |               |

Revised 4-5-05

CONTRACT NO. 83786



**CORNER DETAIL**  
SCALE: 3/4" = 1'-0"

**CONSTRUCTION SPECIFICATIONS**  
PERFORM WORK IN ACCORDANCE WITH THE ILLINOIS DEPARTMENT OF TRANSPORTATION STANDARD SPECIFICATIONS FOR ROAD AND BRIDGE CONSTRUCTION ADOPTED JANUARY 1, 2002, SUPPLEMENTAL SPECIFICATIONS AND RECURRING SPECIAL PROVISIONS ADOPTED JANUARY 1, 2004 AND INSERTED SPECIAL PROVISIONS UPDATED MAY 6, 2004.

**DESIGN STRESSES**  
 $f_y = 60,000$  P.S.I.  
 $f_c = 3,500$  P.S.I.  
ALLOWABLE NET SOIL BEARING PRESSURE = 2,500 P.S.F. MINIMUM

**LOADING HS20-44**  
ALLOW 50 LB/SF FOR FUTURE WEARING SURFACE

**NOTES:**  
1. SEE GENERAL NOTES ON SHEET 58  
2. REINFORCEMENT BARS DESIGNATED (E) SHALL BE EPOXY COATED.

**WATERWAY INFORMATION TABLE (based on IDOT datum)**  
(Major Culvert Crossing No. 2 - Private Driveway Crossing)

ROUTE: U.S. Route 52 SECTION: PRIVATE DRIVEWAY (FEMA Sec. 10025)  
COUNTY: WILL COUNTY  
STREAM NAME: HAMMEL CREEK

| EXISTING CONDITIONS    |                 | PROPOSED CONDITIONS    |                      |
|------------------------|-----------------|------------------------|----------------------|
| STRUCTURE TYPE:        | BOX CULVERT     | STRUCTURE TYPE:        | TWIN BOX CULVERTS    |
| APPROXIMATE SIZE:      | 8 Feet x 5 Feet | APPROXIMATE SIZE:      | 2-12 Feet x 4.0 Feet |
| LOW CHORD ELEV.:       | N/A             | LOW CHORD ELEV.:       | N/A                  |
| UPSTREAM INVERT ELEV.: | 607.3           | UPSTREAM INVERT ELEV.: | 607.3                |
| DOWNSTREAM ELEV.:      | 607.2           | DOWNSTREAM ELEV.:      | 607.2                |

| Drainage Area = 1.9 Square Miles | Existing Low Grade Elev. = 613.8 | At STA 36+66, offset 77 Feet left |                           |            |                             |              |          |                     |          |
|----------------------------------|----------------------------------|-----------------------------------|---------------------------|------------|-----------------------------|--------------|----------|---------------------|----------|
|                                  | Proposed Low Grade Elev. = 613.8 |                                   |                           |            |                             |              |          |                     |          |
| Max. Recorded H.W.E. = 618.0     |                                  |                                   |                           |            |                             |              |          |                     |          |
| Flood                            | Frequency                        | Discharge (cfs)                   | Waterway Opening (sq.ft.) |            | Natural H.W.E. <sup>1</sup> | Created Head |          | Headwater Elevation |          |
|                                  |                                  |                                   | Existing                  | Proposed   |                             | Existing     | Proposed | Existing            | Proposed |
|                                  | 10-year                          | 249                               | 40.8 sq.ft.               | 118 sq.ft. | 612.3                       | 0.0          | 0.00     | 612.2               | 611.9    |
| DESIGN                           | 50-year                          | 445                               | 40.8 sq.ft.               | 137 sq.ft. | 613.1                       | 1.0          | 0.00     | 614.1               | 612.7    |
| BASE                             | 100-year                         | 550                               | 40.8 sq.ft.               | 142 sq.ft. | 613.3                       | 1.0          | 0.00     | 614.3               | 613.1    |
|                                  | 500-year                         | 875                               | 40.8 sq.ft.               | 168 sq.ft. | 614.4                       | 0.3          | 0.00     | 614.7               | 614.2    |
| OVERTOPPING                      | 40-year                          | 400                               | 40.8 sq.ft.               | -----      | N/A                         | N/A          | N/A      | 613.8               | 613.8    |

1. Determined by removing the existing culverts from the Existing HEC-2 Analysis.  
2. Datum Correlation: Baxter & Woodman survey data adjusted by -0.12 feet to match FEMA reference mark datum.  
3. If there is overtopping the area above the roadway elevation is added to the waterway opening because the Natural HWE is above the roadway elevation.

CONSULTANTS: BAXTER & WOODMAN, INC.  
 STATE OF ILLINOIS - PROFESSIONAL DESIGN FIRM  
 LICENSE NO. 001-001031 - EXPIRES 2/20/2005

| CONSULTANTS | REV. NO. | DATE     | DESCRIPTION     |
|-------------|----------|----------|-----------------|
|             | 1        | 12-21-04 | PER IDOT REVIEW |
|             | 2        | 4-5-05   |                 |

DRAWING FILE: BOXCLV.DWG  
PLOTTED BY: DEK 16/DEC/04 10:19

**BAXTER & WOODMAN**  
Consulting Engineers

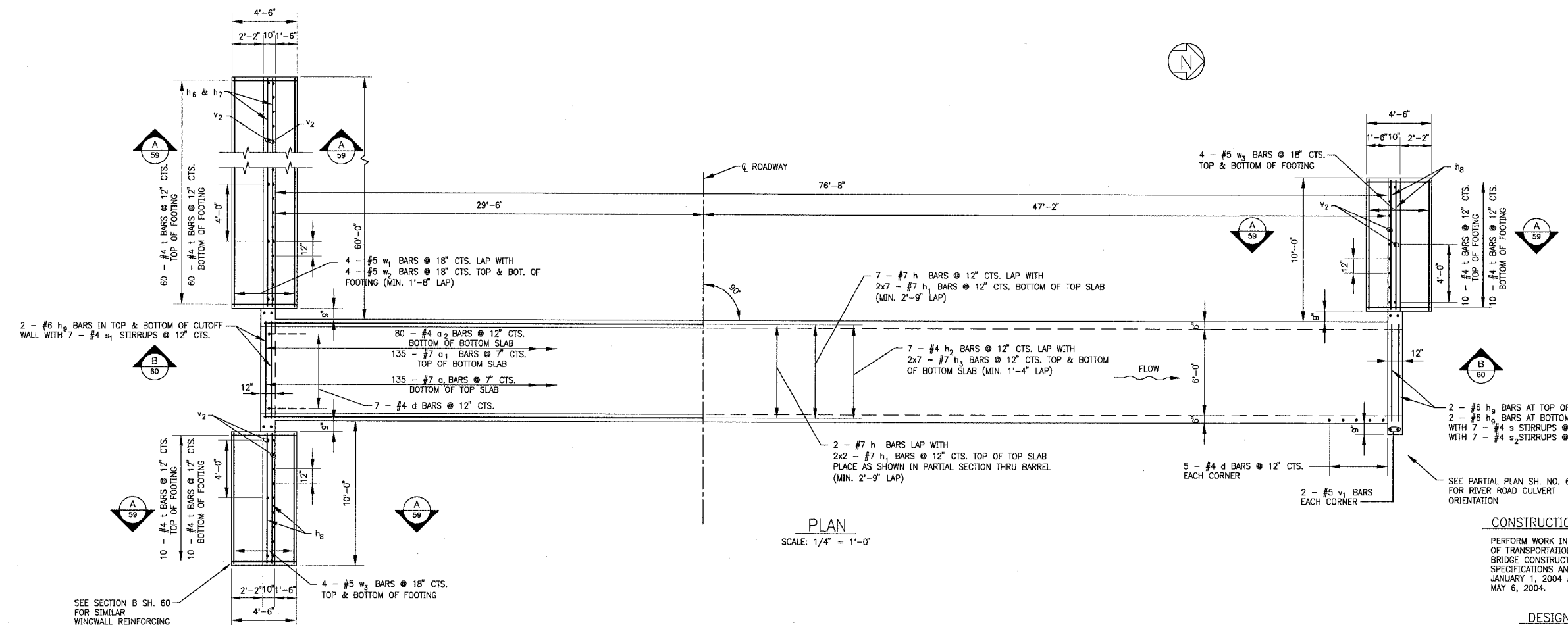
**Baxter & Woodman**  
Crystal Lake, Illinois 815.459.1260  
Burlington, Wisconsin 262.763.7934  
Mokena, Illinois 708.478.2090  
DeKalb, Illinois 815.787.3111  
Grayslake, Illinois 847.223.5088  
Rockford, Illinois 815.489.1551

**VILLAGE OF SHOREWOOD, ILLINOIS**  
**U.S. ROUTE 52 IMPROVEMENTS**

**HAMMEL CREEK**  
**BOX CULVERT @ STA. 36+74**  
**PLAN AND DETAILS**

|             |                 |
|-------------|-----------------|
| DESIGNED BY | SCALE           |
| DRAWN BY    | AS NOTED        |
| CHECKED BY  | PROJECT NO.     |
| DATE        | SHEET NO.       |
| 10-05-04    | <b>56 OF 85</b> |

Revised 4-5-05



**CONSTRUCTION SPECIFICATIONS**  
PERFORM WORK IN ACCORDANCE WITH THE ILLINOIS DEPARTMENT OF TRANSPORTATION STANDARD SPECIFICATIONS FOR ROAD AND BRIDGE CONSTRUCTION ADOPTED JANUARY 1, 2002, SUPPLEMENTAL SPECIFICATIONS AND RECURRING SPECIAL PROVISIONS ADOPTED JANUARY 1, 2004 AND INSERTED SPECIAL PROVISIONS UPDATED MAY 6, 2004.

**DESIGN STRESSES**  
f<sub>y</sub> = 60,000 P.S.I.  
f<sub>c</sub> = 3,500 P.S.I.  
ALLOWABLE NET SOIL BEARING PRESSURE = 2,500 P.S.F. MINIMUM

**LOADING HS20-44**  
ALLOW 50 LB/SF FOR FUTURE WEARING SURFACE

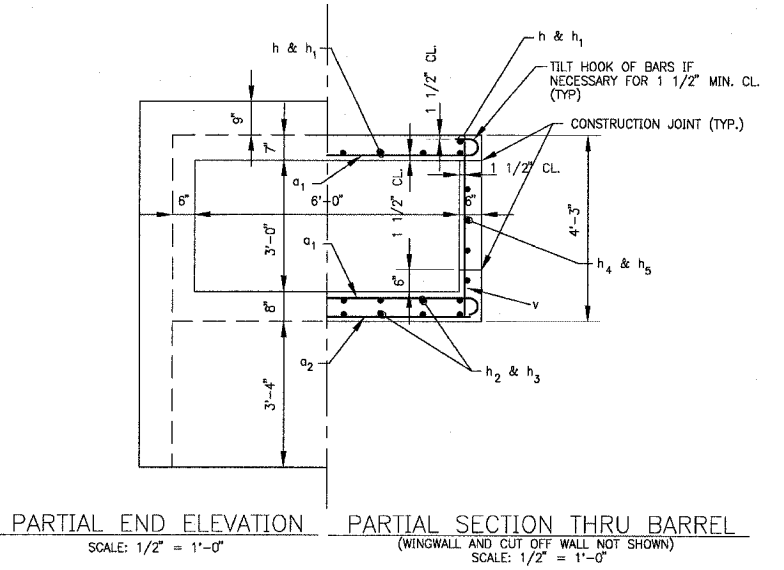
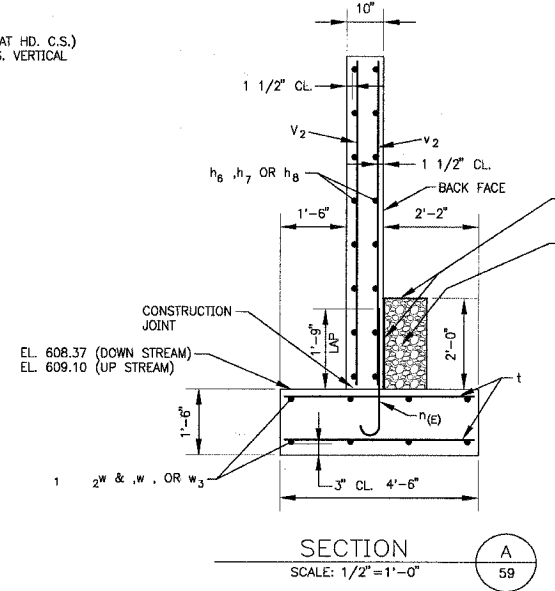
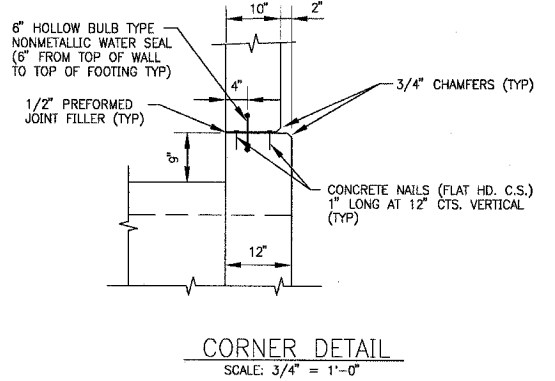
**NOTES:**  
1. SEE GENERAL NOTES ON SHEET 58  
2. BARS INDICATED THUS 12 x 4 - #5 ETC. INDICATES 12 LINES OF BARS WITH 4 LENGTHS PER LINE.

1. Datum Correlation: Baxter & Woodman survey data adjusted by -0.12 feet to match FEMA reference mark datum.  
(Major Culvert Crossing No. 3 - STA 24+17)

ROUTE: **U.S. Route 52** SECTION: COUNTY: **WILL COUNTY**  
STREAM NAME: **N/A**  
EXISTING CONDITIONS (STA 24+63)  
STRUCTURE TYPE: **BOX CULVERT**  
APPROXIMATE SIZE: **24-inch x 18-inch**  
LOW CHORD ELEV.: **N/A**  
UPSTREAM INVERT ELEV.: **611.5**  
DOWNSTREAM INV ELEV.: **611.0**  
PROPOSED CONDITIONS (STA 24+17)  
STRUCTURE TYPE: **BOX CULVERT**  
APPROXIMATE SIZE: **6.0 Feet x 3.0 Feet**  
LOW CHORD ELEV.: **N/A**  
UPSTREAM INVERT ELEV.: **611.5**  
DOWNSTREAM INV ELEV.: **610.8**

| Drainage Area = 84.2 acres                             | Ex. Low Grade Elev. = 616.31   | At STA 25+00    |                            |                                       |              |                     |       |       |       |
|--|--------------------------------|-----------------|----------------------------|---------------------------------------|--------------|---------------------|-------|-------|-------|
|  | Prop. Low Grade Elev. = 616.51 | At STA 25+00    |                            |                                       |              |                     |       |       |       |
| Max. Recorded H.W.E. = 619.0 (Hammel Creek High Water) |                                |                 |                            |                                       |              |                     |       |       |       |
| Flood  | Frequency                      | Discharge (cfs) | Waterway Opening (sq. ft.) | Natural H.W.E. <sup>1</sup> (sq. ft.) | Created Head | Headwater Elevation |       |       |       |
|  |                                |                 | Existing                   | Proposed                              | Existing     | Proposed            |       |       |       |
|  | <b>10-year</b>                 | 46              | 3.0 sq. ft.                | 18.0 sq. ft.                          | 613.9        | 2.8                 | 2.2   | 616.7 | 616.1 |
| <b>DESIGN</b>  | <b>50-year</b>                 | 66              | 3.0 sq. ft.                | 18.0 sq. ft.                          | 614.5        | 2.3                 | 1.8   | 616.8 | 616.3 |
| <b>BASE</b>  | <b>100-year</b>                | 75              | 3.0 sq. ft.                | 18.0 sq. ft.                          | 614.7        | 2.1                 | 1.8   | 616.8 | 616.5 |
| <b>OVERTOPPING</b>                                     | <b>&gt;100-year</b>            | 132             | 3.0 sq. ft.                | -----                                 | -----        | -----               | ----- | 616.3 | 616.6 |

2. Determined by extending a straight line from the tailwater elevations to the upstream invert of the culvert.



COPYRIGHT © 2004 BY BAXTER & WOODMAN, INC.  
 ALL RIGHTS RESERVED. ILL. REG. NO. 013-001217. EXP. 02/28/2003.

| CONSULTANTS | REV. NO. | DATE     | DESCRIPTION     |
|-------------|----------|----------|-----------------|
|             | 1        | 12-21-04 | PER IDOT REVIEW |
|             | 2        | 4-5-05   |                 |

DRAWING FILE: BOXCULV-2.DWG  
PLOTTED BY: DEK 16/DEC/04 10:27

**Baxter & Woodman**  
 Crystal Lake, Illinois 815.459.1280  
 Burlington, Wisconsin 262.763.7834  
 Mokena, Illinois 708.478.2090  
 DeKalb, Illinois 815.707.3111  
 Crystal Lake, Illinois 847.223.6088  
 Rockford, Illinois 815.488.1551

**VILLAGE OF SHOREWOOD, ILLINOIS**  
**U.S. ROUTE 52 IMPROVEMENTS**

**U.S. RTE. 52**  
**BOX CULVERT @ STA. 24+13.62**  
**PLAN AND DETAILS**

DESIGNED BY: BAB  
 DRAWN BY: DEK  
 CHECKED BY: MHY  
 DATE: 10-05-04

SCALE: AS NOTED  
 PROJECT NO.: 010665  
 SHEET NO.: **59 OF 85**

Revised 4-5-05

CONTRACT NO. 83786

**WATERWAY INFORMATION TABLE (based on IDOT data)**  
(Major Culvert Crossing No. 1 - River Road - STA2481)

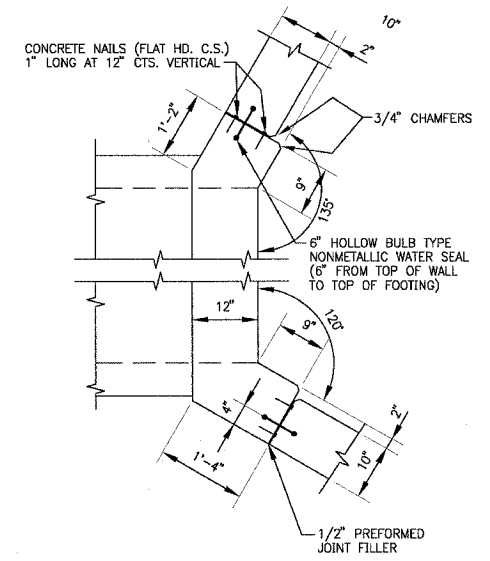
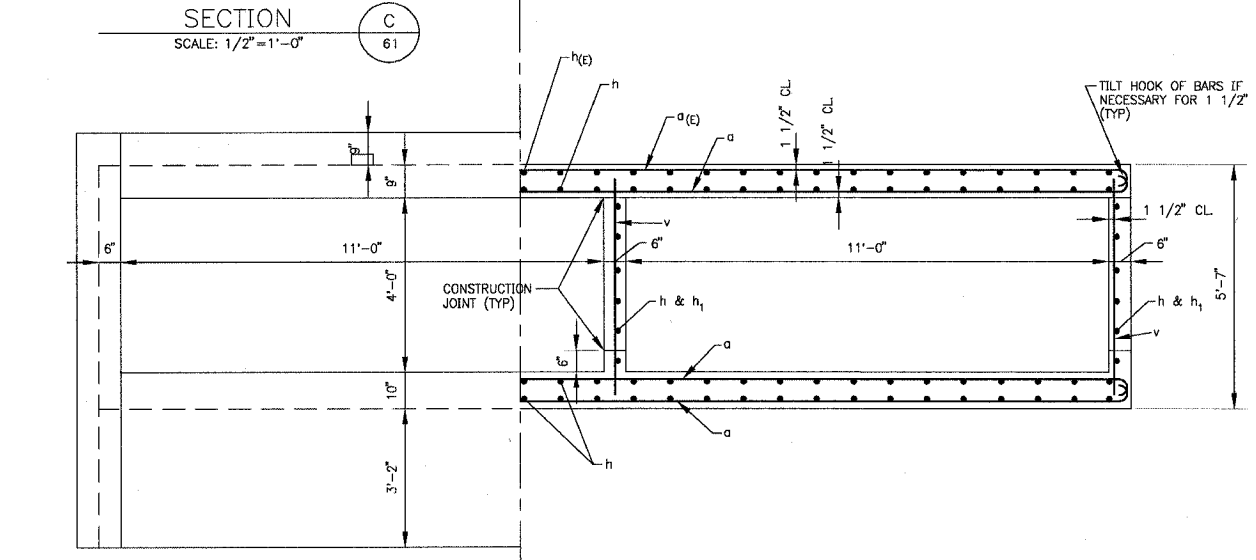
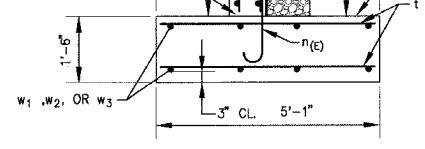
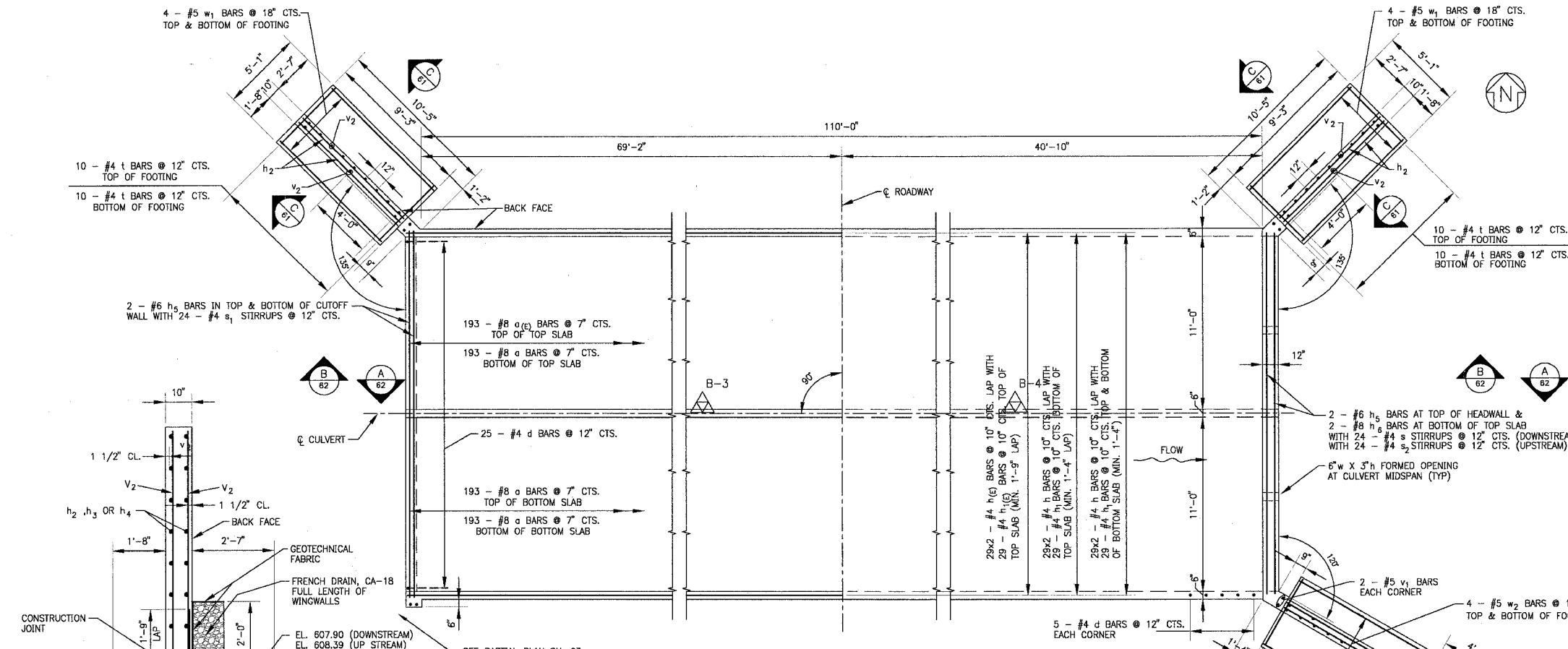
ROUTE: US Route 52 SECTION: RIVER ROAD (FEMA Sec. 11211)  
COUNTY: WILL COUNTY  
STREAM NAME: HANMEL CREEK

| EXISTING CONDITIONS                  | PROPOSED CONDITIONS                   |
|--------------------------------------|---------------------------------------|
| STRUCTURE TYPE: BOX CULVERT          | STRUCTURE TYPE: TWIN BOX CULVERTS     |
| APPROXIMATE SIZE: 10 Feet x 3.5 Feet | APPROXIMATE SIZE: 2-11 Feet x 40 Feet |
| LOW CHORD ELEV.: NA                  | LOW CHORD ELEV.: NA                   |
| UPSTREAM INVERT ELEV.: 6108          | UPSTREAM INVERT ELEV.: 6108           |
| DOWNSTREAM ELEV.: 6106               | DOWNSTREAM ELEV.: 6103                |

Drainage Area = 1.9 Square Miles  
Proposed Low Grade Elev. = 615.59  
Exist. Low Grade Elev. = 615.32  
River Road STA 56+00  
Mix Recorded HWLE = 619.0

| Hood        | Frequency | Discharge (cfs) | Waterway Opening (sq ft) |            | Natural HWLE | Created Head |          | Headwater Elevation |          |
|-------------|-----------|-----------------|--------------------------|------------|--------------|--------------|----------|---------------------|----------|
|             |           |                 | Existing                 | Proposed   |              | Existing     | Proposed | Existing            | Proposed |
|             | 10-year   | 249             | 37 sq ft.                | 88 sq ft.  | 614.9        | 0.9          | 0.0      | 615.8               | 614.8    |
| DESIGN      | 50-year   | 445             | 37 sq ft.                | 108 sq ft. | 615.8        | 0.5          | 0.2      | 616.3               | 616.0    |
| BASE        | 100-year  | 550             | 37 sq ft.                | 112 sq ft. | 616.0        | 0.5          | 0.3      | 616.5               | 616.3    |
|             | 500-year  | 875             | 37 sq ft.                | 121 sq ft. | 616.4        | 0.5          | 0.4      | 616.9               | 616.8    |
| OVERCLOSING | 8-year    | 200             | 37 sq ft.                | —          | NA           | NA           | NA       | 615.3               | 615.6    |

- Determined by removing the existing culverts from the Existing HEC-2 Analysis.
- Datum Correlation: Boxer & Woodman survey data adjusted by -1.12 feet to match FHMA reference mark datum.
- If there is overtopping the area above the roadway elevation is added to the waterway opening because the Natural HWLE is above the roadway elevation.



**CONSTRUCTION SPECIFICATIONS**

PERFORM WORK IN ACCORDANCE WITH THE ILLINOIS DEPARTMENT OF TRANSPORTATION STANDARD SPECIFICATIONS FOR ROAD AND BRIDGE CONSTRUCTION ADOPTED JANUARY 1, 2002, SUPPLEMENTAL SPECIFICATIONS AND RECURRING SPECIAL PROVISIONS ADOPTED JANUARY 1, 2004 AND INSERTED SPECIAL PROVISIONS UPDATED MAY 6, 2004.

**DESIGN STRESSES**

$f_y = 60,000$  P.S.I.  
 $f_c = 3,500$  P.S.I.

ALLOWABLE NET SOIL BEARING PRESSURE = 2,500 P.S.F. MINIMUM

**LOADING HS20-44**

ALLOW 50 LB/SF FOR FUTURE WEARING SURFACE

**NOTES:**

- SEE GENERAL NOTES ON SHEET 58
- REINFORCEMENT BARS DESIGNATED (E) SHALL BE EPOXY COATED.
- BARS INDICATED THUS 12x4 - #5 ETC. INDICATES 12 LINES OF BARS WITH 4 LENGTHS PER LINE.

COPYRIGHT © 2004 BY BAXTER & WOODMAN, INC.  
 ALL RIGHTS RESERVED. NO PART OF THIS DRAWING  
 LICENSE NO. 184-0112 - EXPIRES 7/30/2004

| CONSULTANTS | REV. NO. | DATE     | DESCRIPTION     |
|-------------|----------|----------|-----------------|
|             | 1        | 12-21-04 | PER IDOT REVIEW |
|             | 2        | 4-5-05   |                 |

DRAWING FILE: BOXCULV-3.DWG  
PLOTTED BY: DEK 16/DEC/04 08:47

**BAXTER & WOODMAN**  
Consulting Engineers

*Baxter & Woodman*  
Crystal Lake, Illinois 815.459.1260  
Burlington, Wisconsin 262.763.7834  
Mokena, Illinois 708.478.2090  
DeKalb, Illinois 815.787.3111  
Craylake, Illinois 847.223.5088  
Rockford, Illinois 815.489.1551

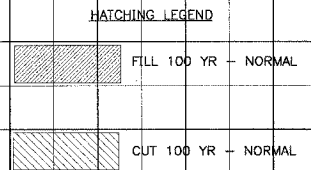
**VILLAGE OF SHOREWOOD, ILLINOIS**  
**U.S. ROUTE 52 IMPROVEMENTS**

**RIVER ROAD**  
**BOX CULVERT @ STA. 55+48.46**  
**PLAN AND DETAILS**

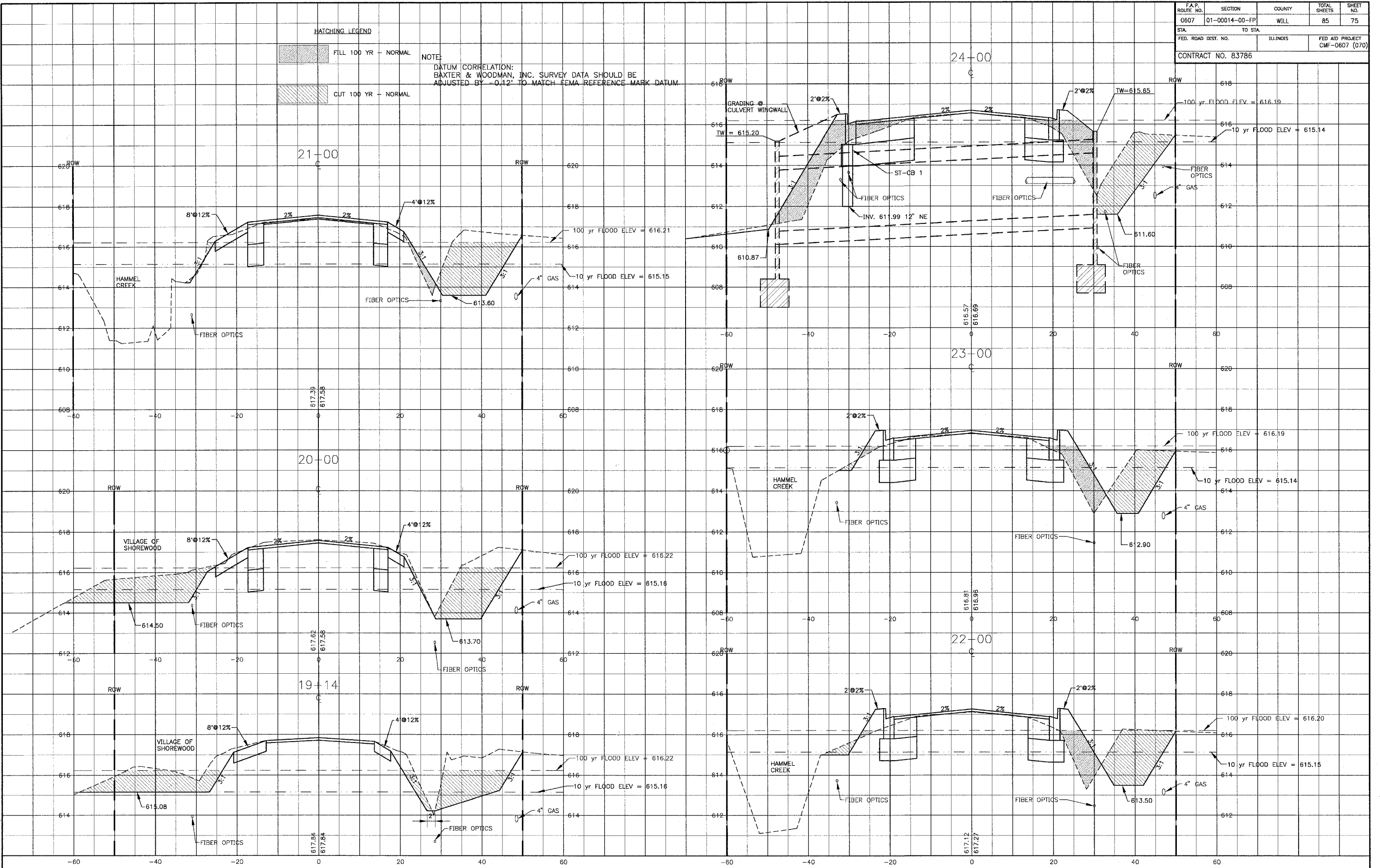
|                    |                       |
|--------------------|-----------------------|
| DESIGNED BY<br>BAB | SCALE<br>AS NOTED     |
| DRAWN BY<br>DEK    | PROJECT NO.<br>010565 |
| CHECKED BY<br>MHY  | SHEET NO.             |
| DATE<br>10-05-04   | <b>61 OF 85</b>       |

Revised 4-5-05

|                  |                |                     |              |                                |
|------------------|----------------|---------------------|--------------|--------------------------------|
| F.A.P. ROUTE NO. | SECTION        | COUNTY              | TOTAL SHEETS | SHEET NO.                      |
| 0607             | 01-00014-00-FP | WILL                | 85           | 75                             |
| STA.             | TO STA.        | FED. ROAD DIST. NO. | ILLINOIS     | FED AID PROJECT CMF-0607 (070) |
|                  |                |                     |              | CONTRACT NO. 83786             |



NOTE:  
 DATUM CORRELATION:  
 BAXTER & WOODMAN, INC. SURVEY DATA SHOULD BE  
 ADJUSTED BY -0.12' TO MATCH FEMA REFERENCE MARK DATUM.



MA:SHRPW010665.DWG\10665-XSEC.dwg  
 Plotted: 3-08-05 @ 11:51am By: 382pmp  
 Copyright © 2004, By Baxter & Woodman, Inc.  
 State of Illinois - Professional Design Firm  
 License No. - 184-001121 - Expires 4-30-05

| CONSULTANTS | REV. NO. | DATE     | DESCRIPTION         |
|-------------|----------|----------|---------------------|
|             | 1        | 12-21-04 | PER I.D.O.T. REVIEW |
|             | 2        | 2-4-05   | PER I.D.O.T. REVIEW |
|             | 3        | 4-5-05   |                     |

DRAWING FILE: PLOTTED BY:

**BAXTER & WOODMAN**  
 Consulting Engineers

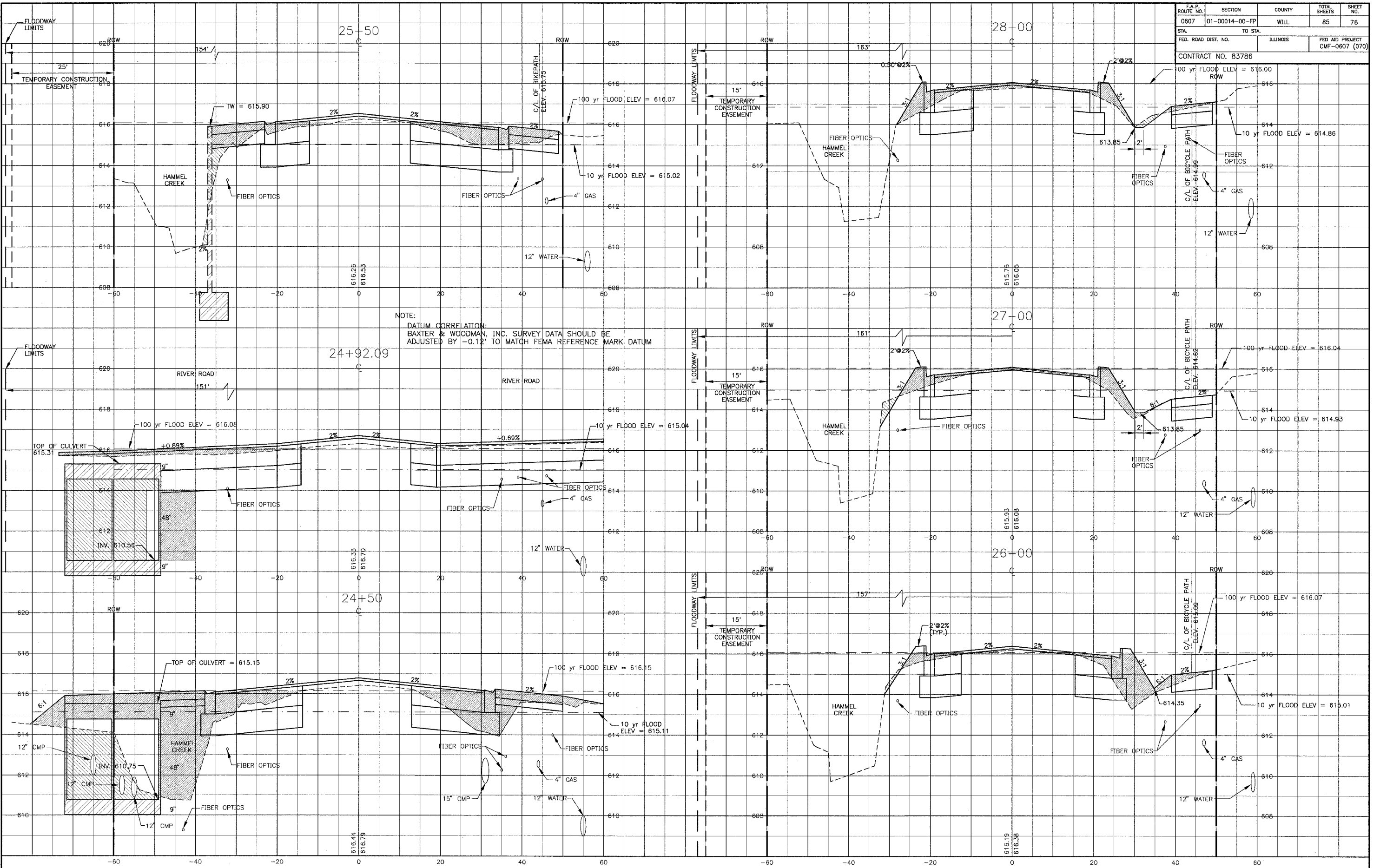
*Baxter & Woodman*  
 Crystal Lake, Illinois 815.459.1260  
 Burlington, Wisconsin 262.763.7834  
 Mokena, Illinois 708.478.2090  
 DeKalb, Illinois 815.787.3111  
 Grayslake, Illinois 847.223.5088  
 Rockford, Illinois 815.489.1651

**VILLAGE OF SHOREWOOD, ILLINOIS**  
**U.S. ROUTE 52 IMPROVEMENTS**

**CROSS SECTIONS**  
**U.S. ROUTE 52**  
**STA. 19+14 TO STA. 24+00**

|             |          |                    |
|-------------|----------|--------------------|
| DESIGNED BY | LDH      | SCALE VERT: 1"=2'  |
| DRAWN BY    | UKB      | HORIZ: 1"=10'      |
| CHECKED BY  | LDH      | PROJECT NO. 010665 |
| DATE        | 10-05-04 | SHEET NO.          |

Revised 4-5-05



NOTE:  
DATUM CORRELATION:  
BAXTER & WOODMAN, INC. SURVEY DATA SHOULD BE  
ADJUSTED BY -0.12' TO MATCH FEMA REFERENCE MARK DATUM

M:\SHRWD\010665\DWG\10665-XSEC.dwg  
 Plotted: 3-08-05 @ 11:51am By: 362mp  
 Copyright © 2004, By: Baxter & Woodman, Inc.  
 State of Illinois - Professional Design Firm  
 License No. 134-001121 - Expires 4-30-05

| CONSULTANTS | REV. NO. | DATE     | DESCRIPTION         |
|-------------|----------|----------|---------------------|
|             | 1        | 12-21-04 | PER I.D.O.T. REVIEW |
|             | 2        | 2-4-05   | PER I.D.O.T. REVIEW |
|             | 3        | 4-5-05   |                     |

DRAWING FILE: PLOTTED BY:



**Baxter & Woodman**  
 Crystal Lake, Illinois 815.459.1260  
 Burlington, Wisconsin 262.763.7834  
 Mokena, Illinois 708.478.2090  
 DeKalb, Illinois 815.787.3111  
 Craystake, Illinois 847.223.5088  
 Rockford, Illinois 815.489.1551

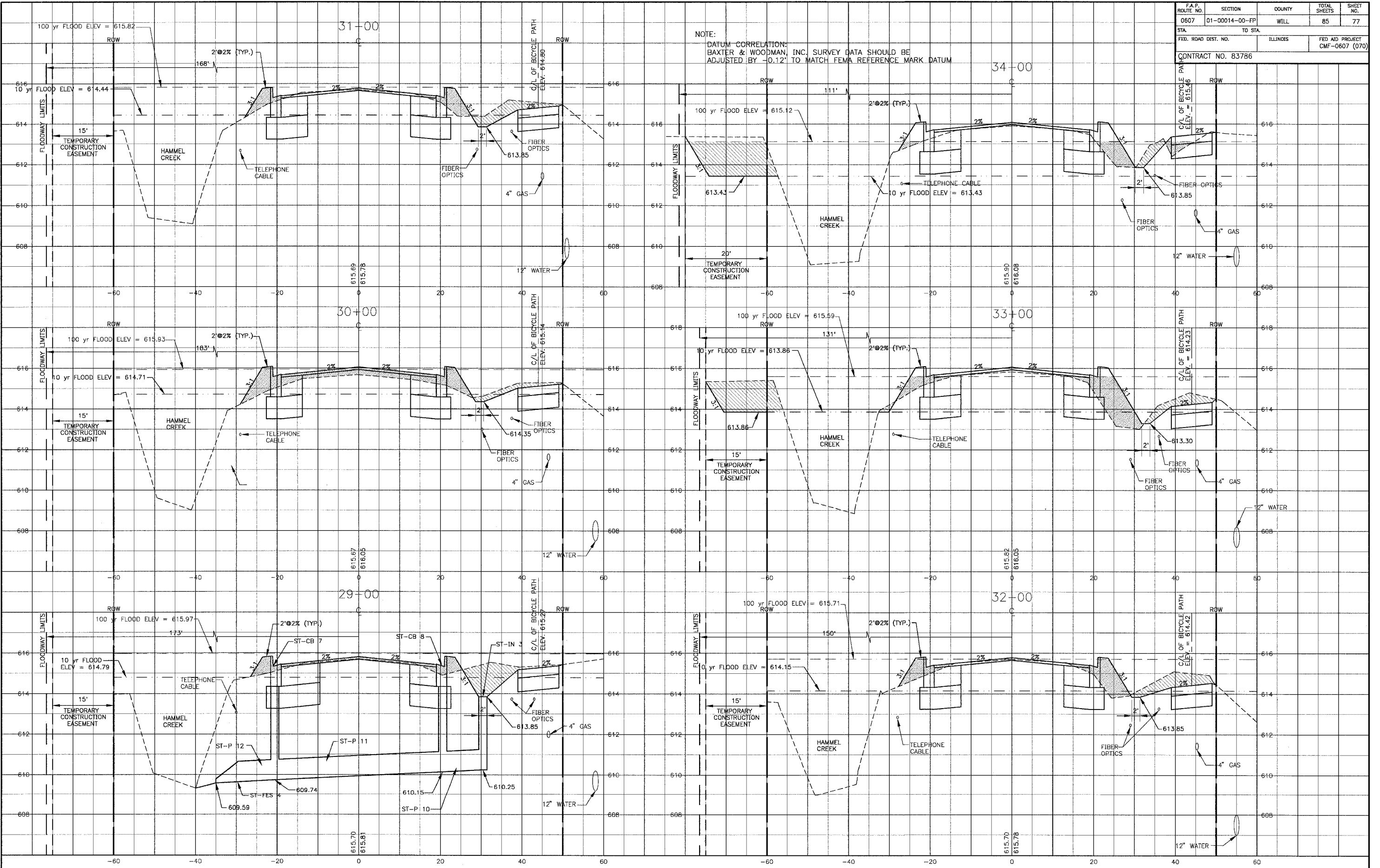
**VILLAGE OF SHOREWOOD, ILLINOIS  
 U.S. ROUTE 52 IMPROVEMENTS**

**CROSS SECTIONS  
 U.S. ROUTE 52  
 STA. 24+50 TO STA. 28+00**

|                    |                       |
|--------------------|-----------------------|
| DESIGNED BY<br>LDH | SCALE VERT: 1"=2'     |
| DRAWN BY<br>UKB    | HORIZ: 1"=10'         |
| CHECKED BY<br>LDH  | PROJECT NO.<br>010665 |
| DATE<br>10-05-04   | SHEET NO.<br>76 OF 85 |

Revised 4-5-05

NOTE:  
 DATUM CORRELATION:  
 BAXTER & WOODMAN, INC. SURVEY DATA SHOULD BE  
 ADJUSTED BY -0.12' TO MATCH FEMA REFERENCE MARK DATUM



| REV. NO. | DATE     | DESCRIPTION         |
|----------|----------|---------------------|
| 1        | 12-21-04 | PER I.D.O.T. REVIEW |
| 2        | 2-04-05  | PER I.D.O.T. REVIEW |
| 3        | 4-5-05   |                     |

CONSULTANTS: BAXTER & WOODMAN  
 DRAWING FILE: [blank]  
 PLOTTED BY: [blank]

**BAXTER & WOODMAN**  
 Consulting Engineers

*Baxter & Woodman*  
 Crystal Lake, Illinois 815.459.1260  
 Burlington, Wisconsin 262.763.7834  
 Mokena, Illinois 708.478.2090  
 DeKalb, Illinois 815.787.3111  
 Crayslake, Illinois 847.223.5088  
 Rockford, Illinois 815.489.1551

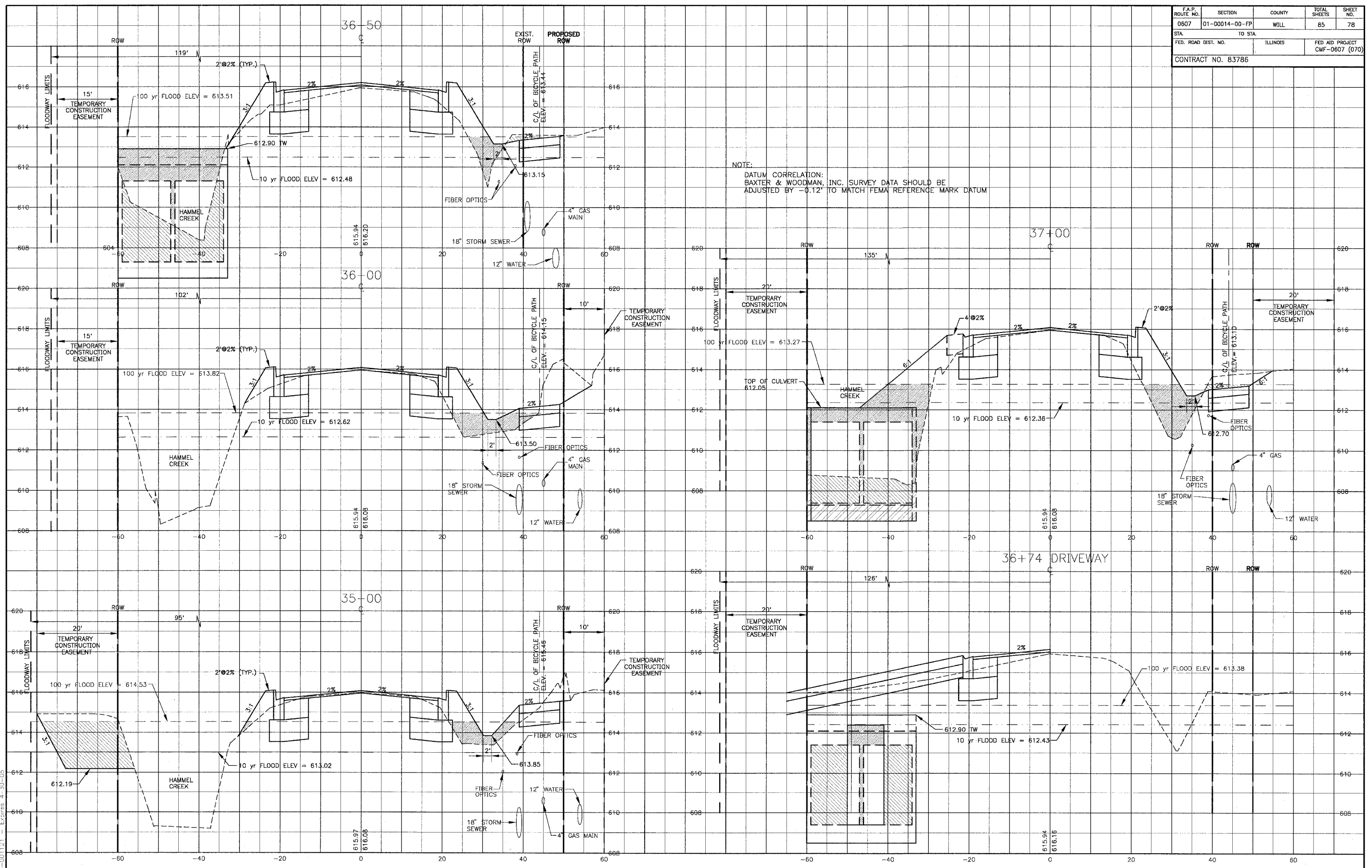
**VILLAGE OF SHOREWOOD, ILLINOIS**  
**U.S. ROUTE 52 IMPROVEMENTS**

**CROSS SECTIONS**  
**U.S. ROUTE 52**  
**STA. 29+00 TO STA. 34+00**

|             |          |                   |               |
|-------------|----------|-------------------|---------------|
| DESIGNED BY | LDH      | SCALE VERT: 1"=2' | HORIZ: 1"=10' |
| DRAWN BY    | UKB      | PROJECT NO.       | 010665        |
| CHECKED BY  | [blank]  | SHEET NO.         | [blank]       |
| DATE        | 10-05-04 | <b>77 OF 85</b>   |               |

M:\SHRWDY\010665\DWGS\10665-XSEC.dwg  
 Plotted: 3-08-05 @ 11:51am By: 362pm  
 Copyright © 2004, By Baxter & Woodman, Inc.  
 State of Illinois - Professional Design Firm  
 License No. 184-001121 - Expires 4-30-05

Revised 4-5-05



NOTE:  
 DATUM CORRELATION:  
 BAXTER & WOODMAN, INC. SURVEY DATA SHOULD BE  
 ADJUSTED BY -0.12' TO MATCH FEMA REFERENCE MARK DATUM

M:\SHRWD\010665\DWGS\10665-YSEC.dwg  
 Plotted: 3-05-05 9:13 am by: jg2pmp  
 User: jg2pmp  
 Scale: 1"=20'-0"  
 License No.: 184-001121 Expires: 4-30-05

| CONSULTANTS | REV. NO. | DATE     | DESCRIPTION         |
|-------------|----------|----------|---------------------|
|             | 1        | 12-21-04 | PER I.D.O.T. REVIEW |
|             | 2        | 2-4-05   | PER I.D.O.T. REVIEW |
|             | 3        | 4-5-05   |                     |

\* REFER TO EQUIPMENT MANUFACTURER'S SHOP DRAWINGS

**BAXTER & WOODMAN**  
 Consulting Engineers

*Baxter & Woodman*  
 Crystal Lake, Illinois 815.459.1280  
 Burlington, Wisconsin 262.763.7834  
 Mokena, Illinois 708.478.2000  
 DeKalb, Illinois 815.787.3111  
 Crystal Lake, Illinois 847.223.5088  
 Rockford, Illinois 815.489.1551

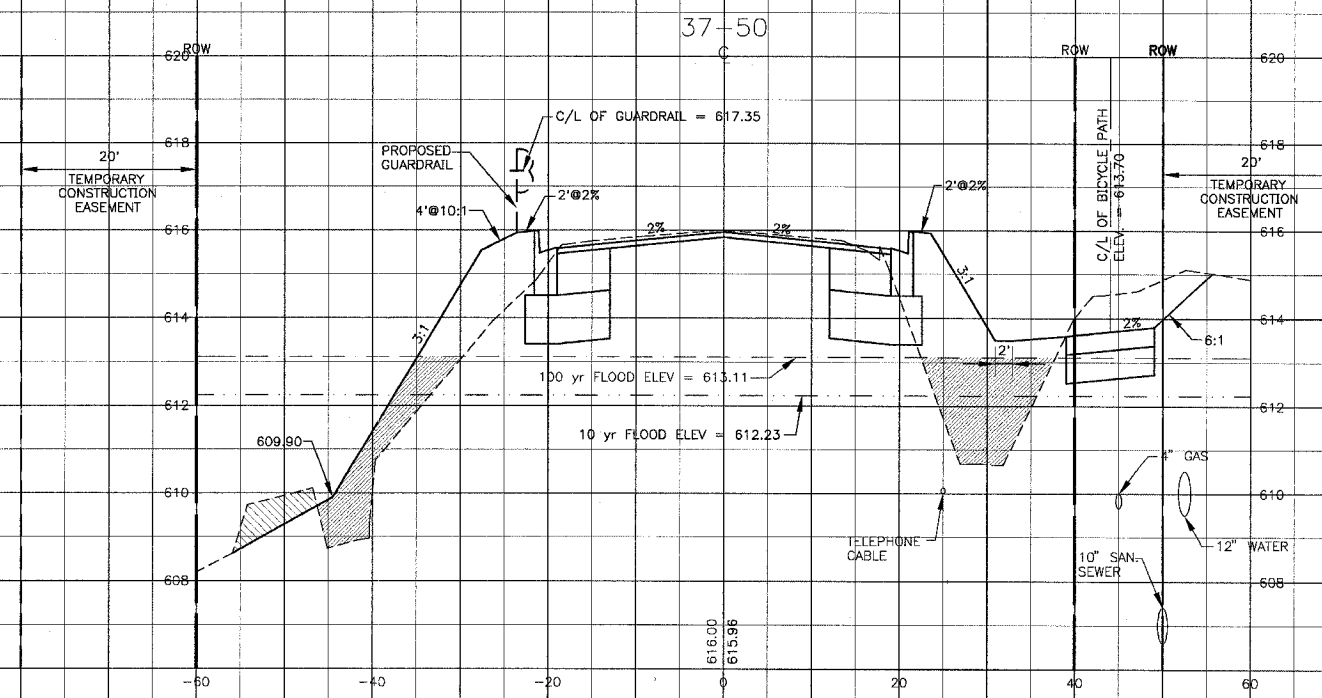
**VILLAGE OF SHOREWOOD, ILLINOIS**  
**U.S. ROUTE 52 IMPROVEMENTS**

**CROSS SECTIONS**  
**U.S. ROUTE 52**  
**STA. 35+00 TO STA. 37+00**

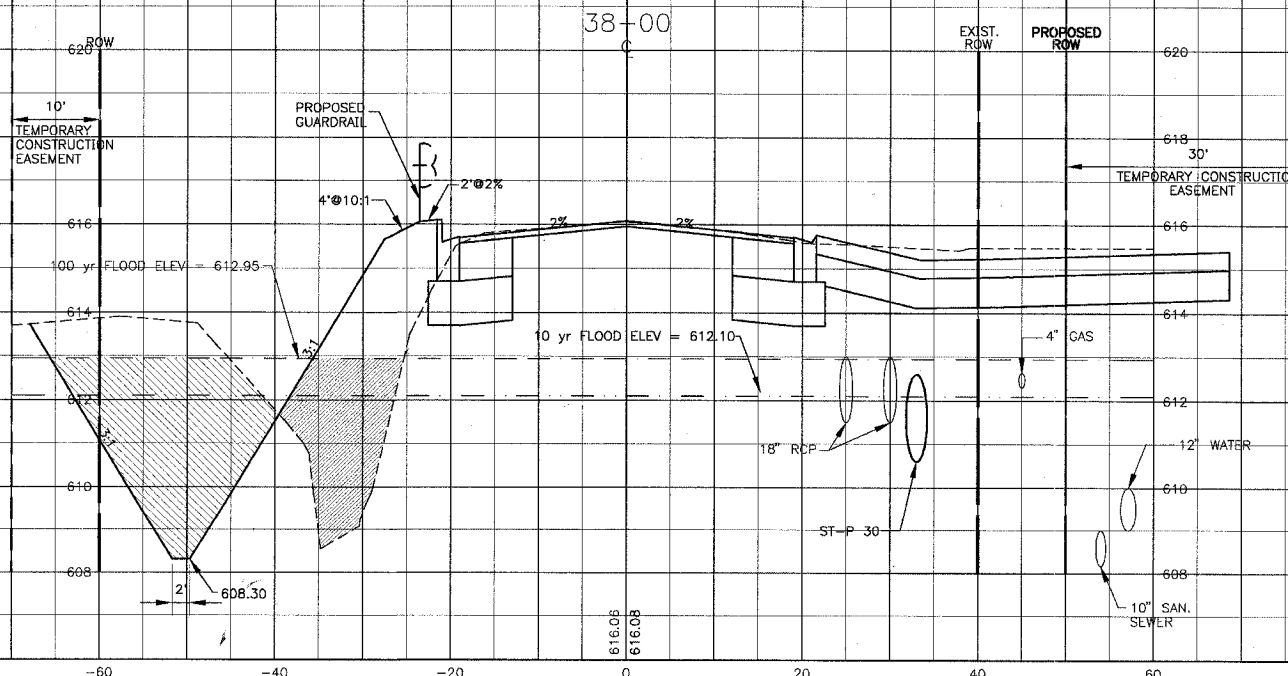
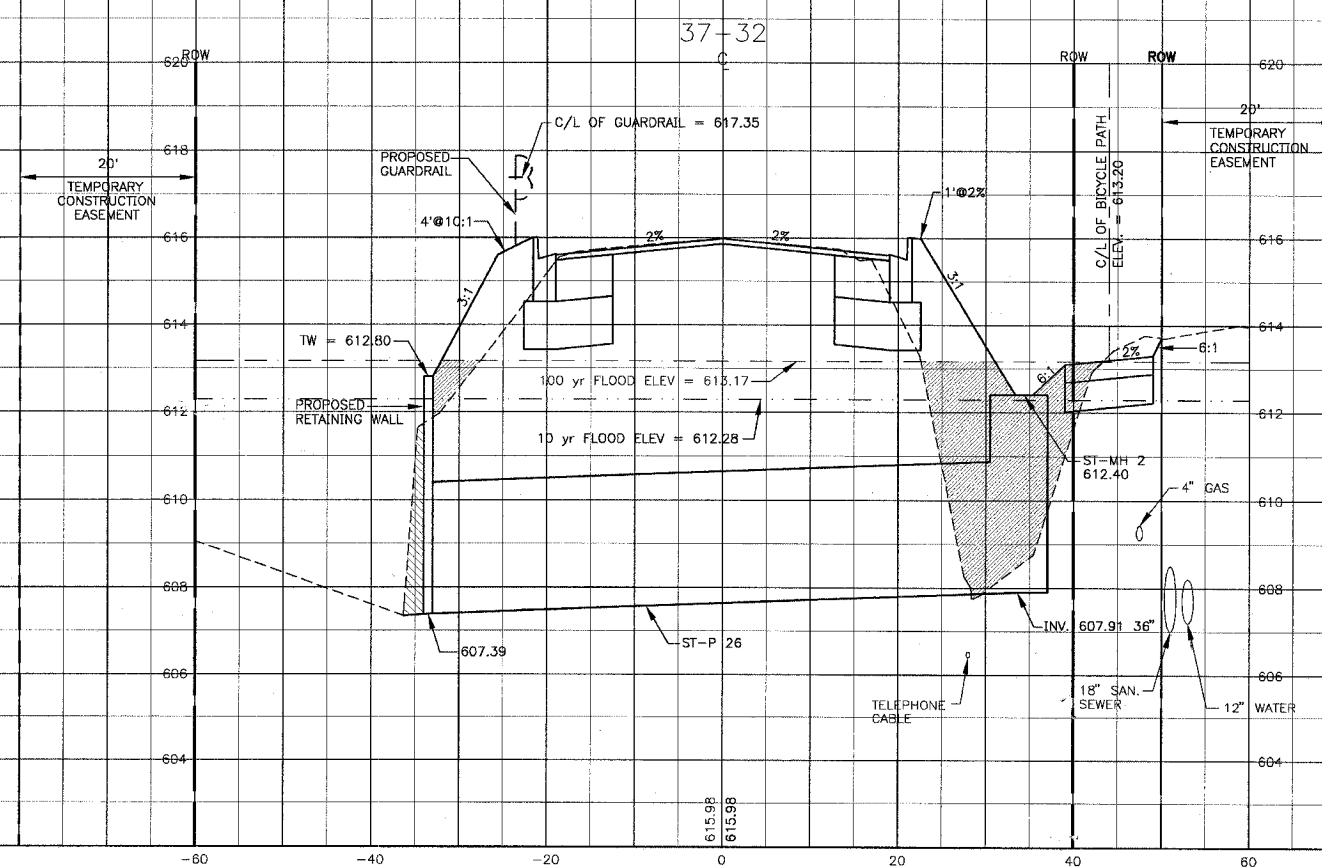
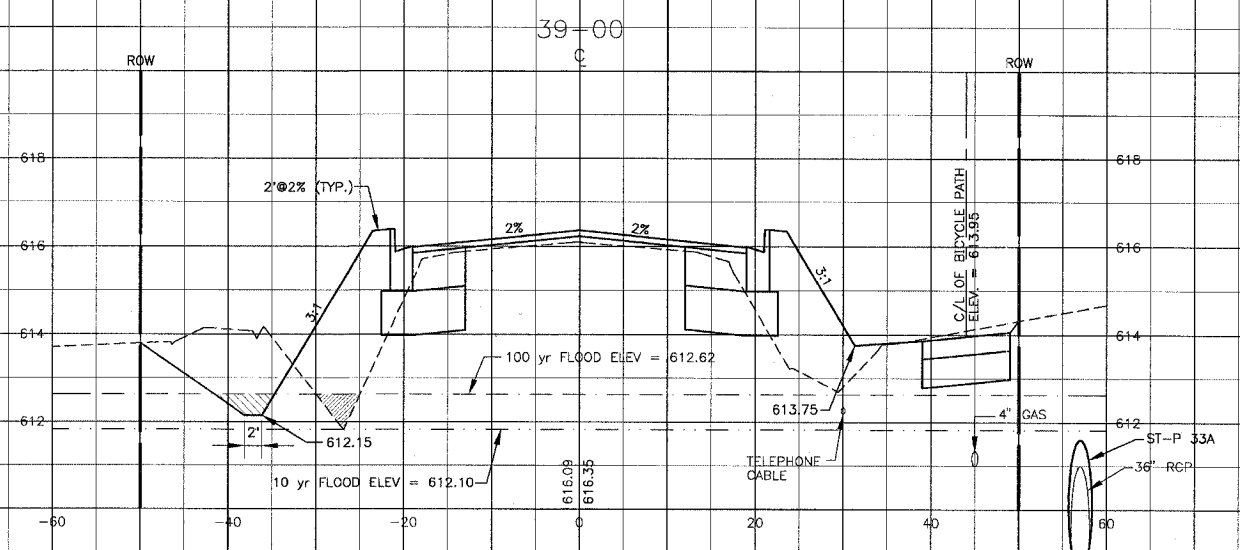
|             |          |                    |
|-------------|----------|--------------------|
| DESIGNED BY | LDH      | SCALE VERT: 1"=2'  |
| DRAWN BY    | UKB      | HORIZ: 1"=10'      |
| CHECKED BY  | LDH      | PROJECT NO. 010665 |
| DATE        | 10-05-04 | SHEET NO. 78 OF 85 |

Revised 4-5-05





NOTE:  
 DATUM CORRELATION:  
 BAXTER & WOODMAN, INC. SURVEY DATA SHOULD BE  
 ADJUSTED BY -0.12' TO MATCH FEMA REFERENCE MARK DATUM



M:\SHRWD\010665\DWG\10665-XSEC.dwg  
 Plotted: 3-08-05 @ 11:52am By: 362pmp  
 Copyright © 2004, By: Baxter & Woodman, Inc.  
 State of Illinois - Professional Design Firm  
 License No. - 184-001121 - Expires 4-30-05

| CONSULTANTS | REV. NO. | DATE     | DESCRIPTION         |
|-------------|----------|----------|---------------------|
|             | 1        | 12-21-04 | PER I.D.O.T. REVIEW |
|             | 2        | 2-4-05   | PER I.D.O.T. REVIEW |
|             | 3        | 4-9-05   |                     |

DRAWING FILE: PLOTTED BY:

**BAXTER & WOODMAN**  
 Consulting Engineers

**Baxter & Woodman**  
 Crystal Lake, Illinois 815.459.1260  
 Burlington, Wisconsin 262.763.7834  
 Mokena, Illinois 708.478.2090  
 DeKalb, Illinois 815.787.3111  
 Graystake, Illinois 847.223.5088  
 Rockford, Illinois 815.489.1551

**VILLAGE OF SHOREWOOD, ILLINOIS**  
**U.S. ROUTE 52 IMPROVEMENTS**

**CROSS SECTIONS**  
**U.S. ROUTE 52**  
**STA. 37+50 TO STA. 39+00**

|             |                    |
|-------------|--------------------|
| DESIGNED BY | SCALE VERT: 1"=2'  |
| DRAWN BY    | HORIZ: 1"=10'      |
| CHECKED BY  | PROJECT NO. 010665 |
| DATE        | SHEET NO.          |
| 10-05-04    | <b>79 OF 85</b>    |

Revised 4-9-05