

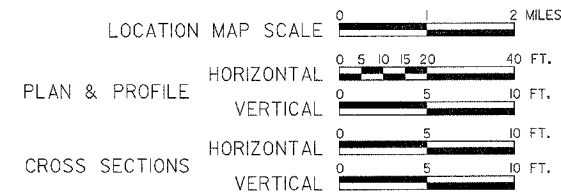
**STATE OF ILLINOIS
DEPARTMENT OF TRANSPORTATION
PLANS FOR
PROPOSED LOCAL AGENCY IMPROVEMENT
FEDERAL-AID BRRP PROJECT**

INDEX OF SHEETS

- 1 = COVER SHEET
- 2 = GENERAL NOTES, SCHEDULES AND TYPICAL SECTION
- 3 = PLAN AND PROFILE
- 4 = GENERAL PLAN AND ELEVATION
- 5 = NORTH & SOUTH ABUTMENT DETAILS
- 6 = PRECAST CONCRETE BRIDGE SLAB DETAILS
- 7 = STEEL BRIDGE RAIL, TYPE SM
- 8 = PILING DETAILS
- 9-10 = CROSS SECTIONS

STANDARDS

- 000001-04 STANDARD SYMBOLS, ABBREVIATIONS & PATTERNS
- 515001-02 DETAIL OF NAME PLATE FOR BRIDGES
- 702001-05 TRAFFIC CONTROL DEVICES
- BLR-21-6 TYPICAL APPLICATION OF TRAFFIC CONTROL DEVICES
- BLR-22-4 TYPICAL APPLICATION OF TRAFFIC CONTROL DEVICES



**BRIDGE REPLACEMENT &
REHABILITATION PROGRAM**

**SECTION 03-08111-00-BR
OGLE COUNTY
PROJECT NO. BROS-141(60)
2005**

TR122 (Anterior Road)

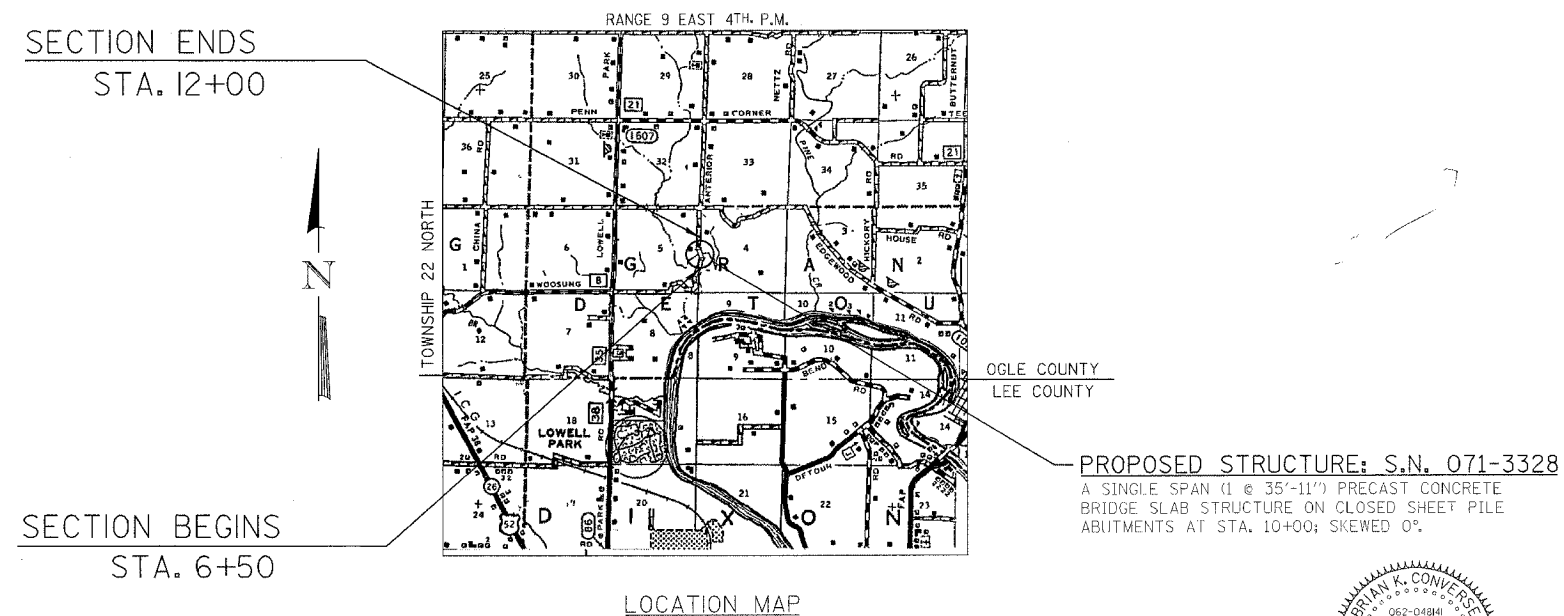
NET LENGTH 550.00 FEET = 0.104 MILES

SUMMARY OF QUANTITIES

CODE NO.	QUANTITY	UNIT	PAY ITEM
20100110	34	UNIT	TREE REMOVAL (6 TO 15 UNITS DIA.)
20100210	51	UNIT	TREE REMOVAL (OVER 15 UNITS DIA.)
20200100	254	CU YD	EARTH EXCAVATION
20300100	51	CU YD	CHANNEL EXCAVATION
*20900110	143	CU YD	POROUS GRANULAR BACKFILL
*25001000	0.40	ACRE	SEEDING CLASS 2 (SPECIAL)
25100630	129	SO YD	EROSION CONTROL BLANKET
*35101400	510	TON	AGGREGATE BASE COURSE, TYPE B
*40200800	285	TON	AGGREGATE SURFACE COURSE, TYPE B
50100100	1	EACH	REMOVAL OF EXISTING STRUCTURES
50200100	105	CU YD	STRUCTURE EXCAVATION
50300225	21.7	CU YD	CONCRETE STRUCTURES
50400105	1077.5	SQ FT	PRECAST CONCRETE BRIDGE SLAB
50500405	5130	POUND	FURNISHING & ERECTING STRUCTURAL STEEL
50700305	1210	POUND	HARDWARE
50800105	2260	LB	REINFORCEMENT BARS
50901005	72	FOOT	STEEL BRIDGE RAIL, TYPE SM
51201000	264	FOOT	FURNISHING METAL PILE SHELLS 12"
51202600	264	FOOT	DRIVING AND FILLING SHELLS
51203200	2	EACH	TEST PILE METAL SHELLS
*51204900	2815	SQ FT	STEEL SHEET PILING
51500100	1	EACH	NAME PLATES

CONSTRUCTION TYPE CODE - X020-2A

*SEE SPECIAL PROVISIONS



JOB NO. C-92-051-05
CONTRACT NO. 85349
ROAD CLASSIFICATION: RURAL, LOCAL ROAD
ADT 100 (2003), 100 (2023)
DESIGN SPEED: 30 MPH
RURAL (FAPLHI)

CALL J.U.L.I.E.
BEFORE YOU DIG
800-892-0123



Brian K. Conners
DATE: 1/25/05
EXPIRES 11/30/05

APPROVED	<i>Chad...</i>	20
	1/31/05	
	LOCAL AGENCY OFFICIAL	
PASSED	<i>February 2, 2005</i>	20
	DISTRICT ENGINEER OF LOCAL ROADS & STREETS	
APPROVED	<i>February 2, 2005</i>	20
	DISTRICT ENGINEER	
STATE OF ILLINOIS DEPARTMENT OF TRANSPORTATION		