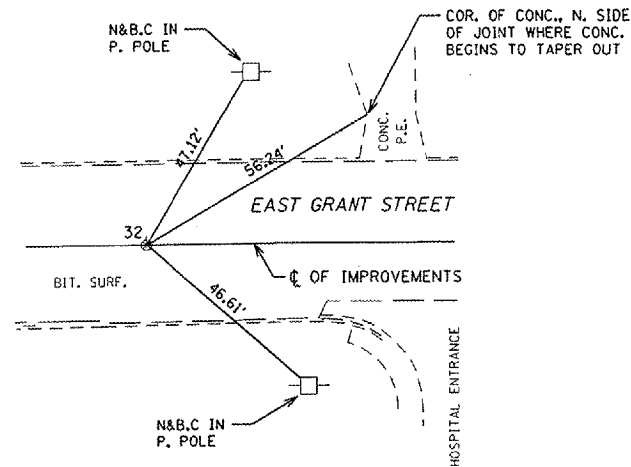
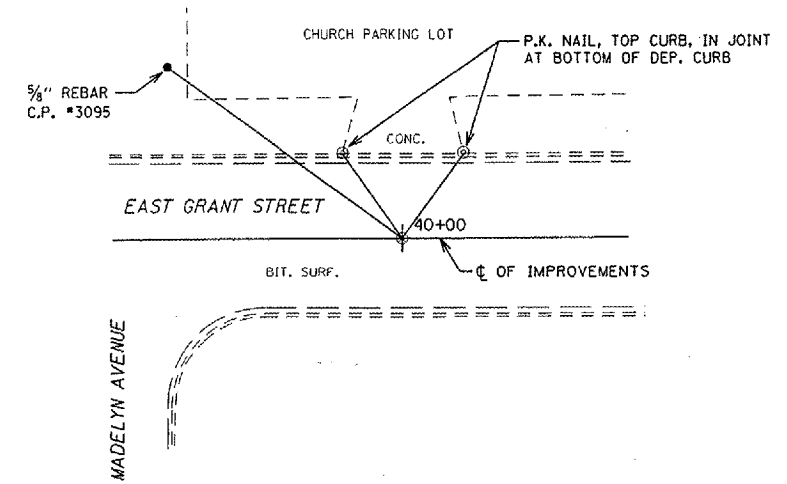


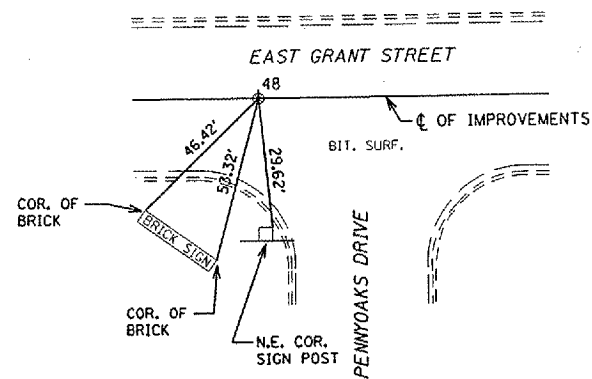
MAG NAIL & B.C.
 P.O.T. STA. 25+13.47 EAST GRANT STREET



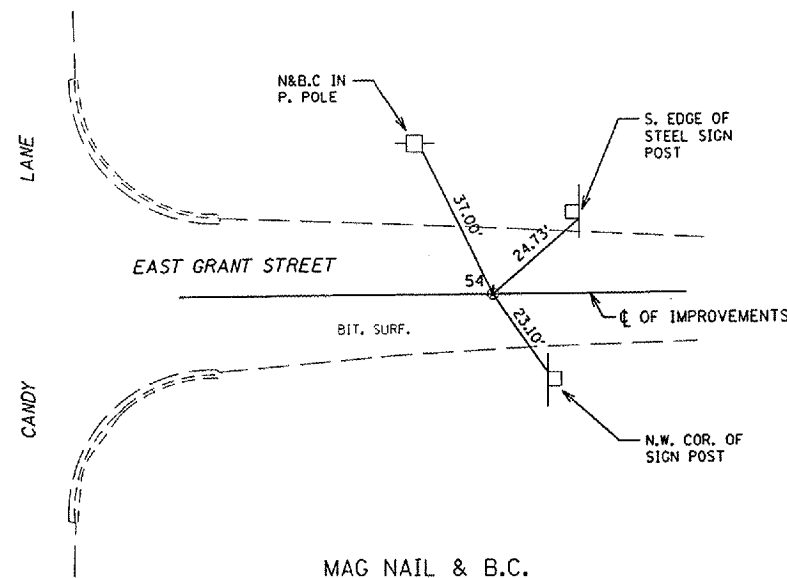
MAG NAIL & B.C.
 P.O.T. STA. 32+00.00 EAST GRANT STREET



MAG NAIL & B.C.
 P.O.T. STA. 40+00.00 EAST GRANT STREET



MAG NAIL & B.C.
 P.O.T. STA. 48+00.00 EAST GRANT STREET



MAG NAIL & B.C.
 P.O.T. STA. 54+00.00 EAST GRANT STREET

DRAWN BY <u>M.G.M.</u> CHECKED BY <u>D.B.H.</u> APPROVED BY <u>W.J.S.</u> DATE <u>JANUARY, 2005</u>	HORIZONTAL CONTROL POINTS EAST GRANT STREET IMPROVEMENTS
REVISIONS DATE BY	MACOMB, ILLINOIS
FIELD BOOK:	SCALE: <u>N.T.S.</u> JOB NO. <u>0401466</u> SHEET <u>25</u> OF <u>66</u>
BENTON & ASSOCIATES INC. Consulting Engineers / Land Surveyors 1970 West Lafayette Avenue Jacksonville, Illinois 62650 Phone : 217-245-4148 Fax : 217-245-4149 IL Design Firm Registration No. 184-000852	