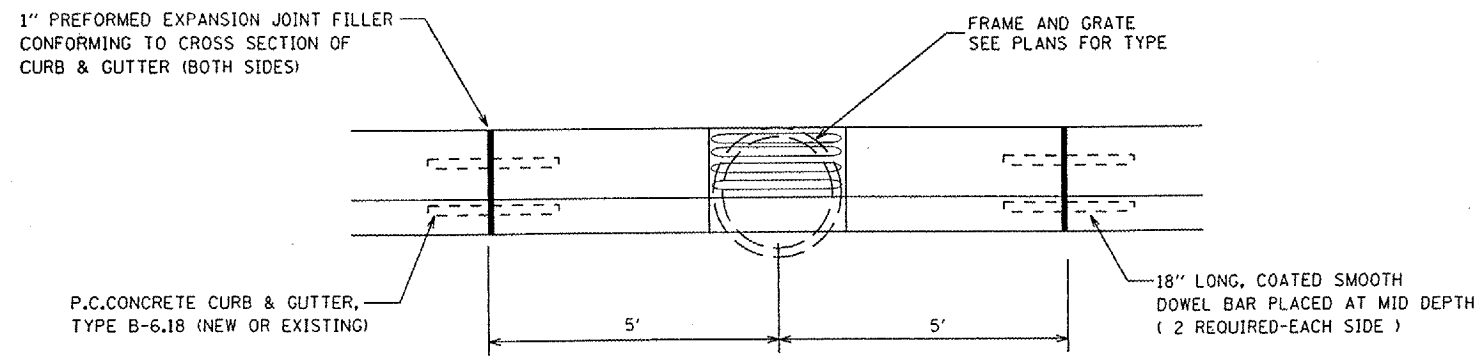
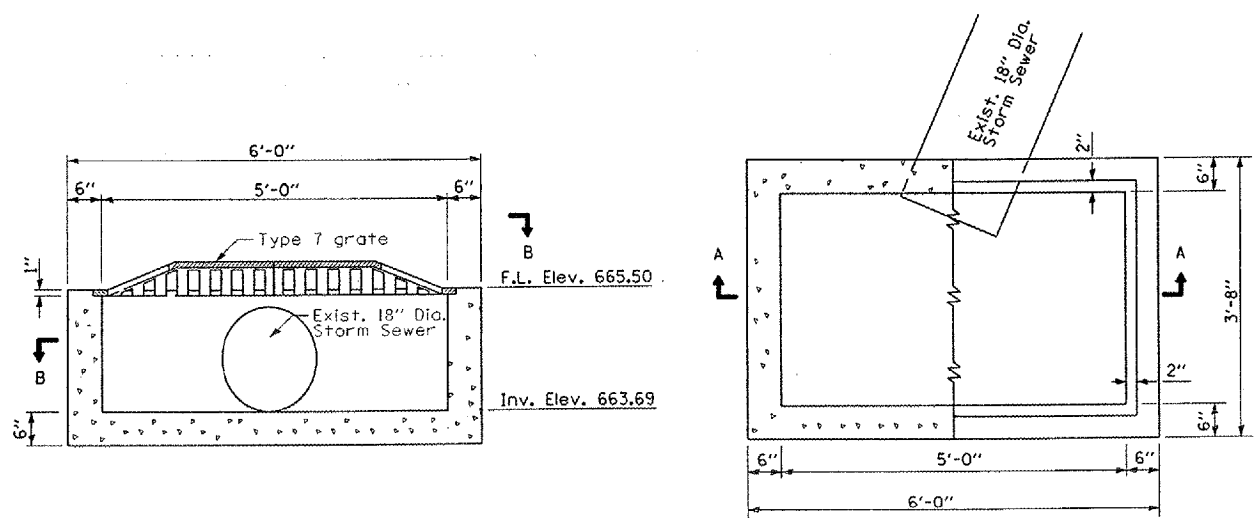


CONTRACT NO. 89337



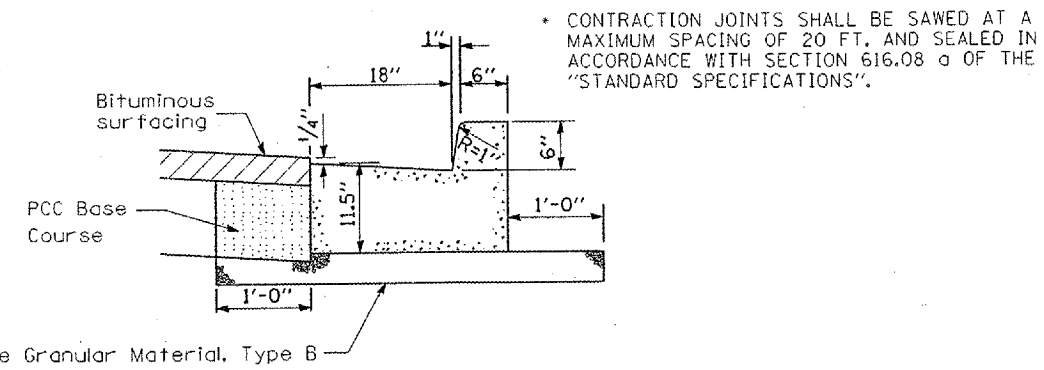
DETAIL CURB AND GUTTER INLET EXPANSION JOINT
 N.T.S.



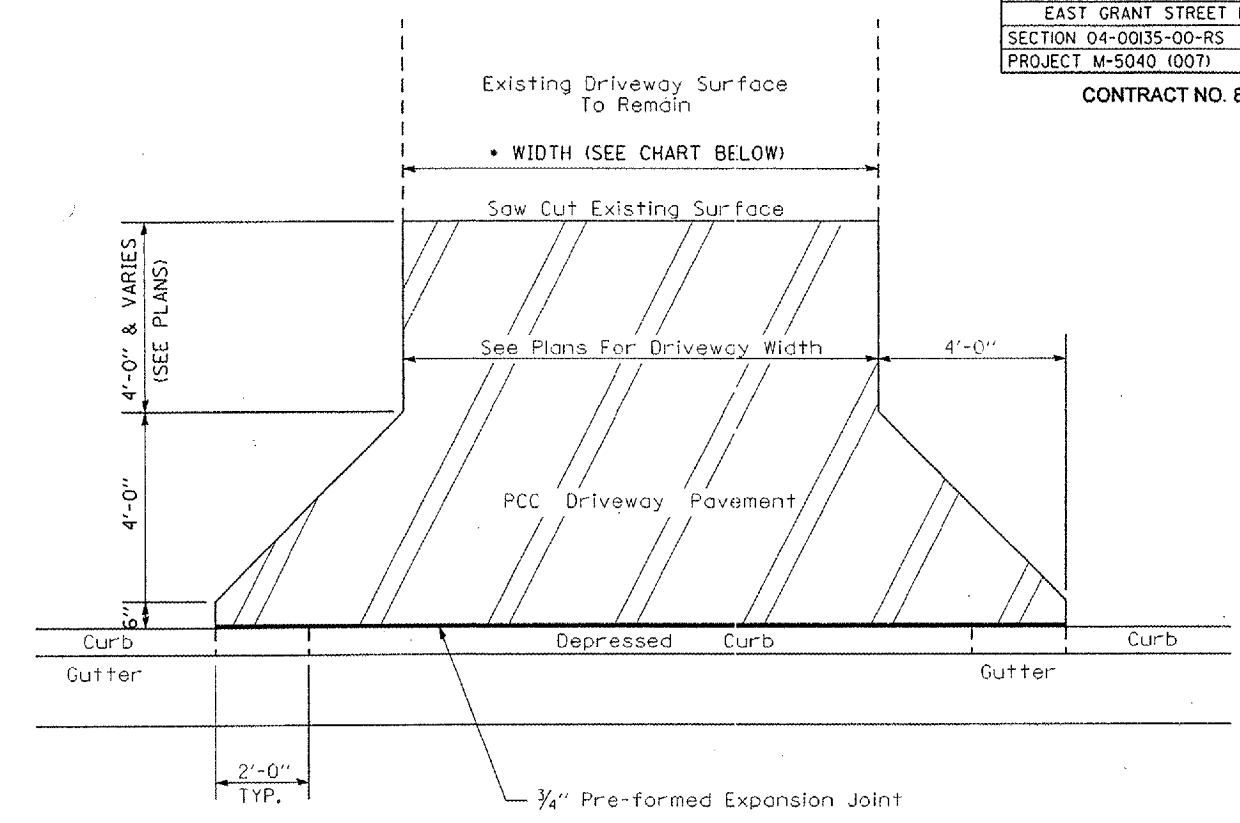
SECTION A-A

SECTION B-B

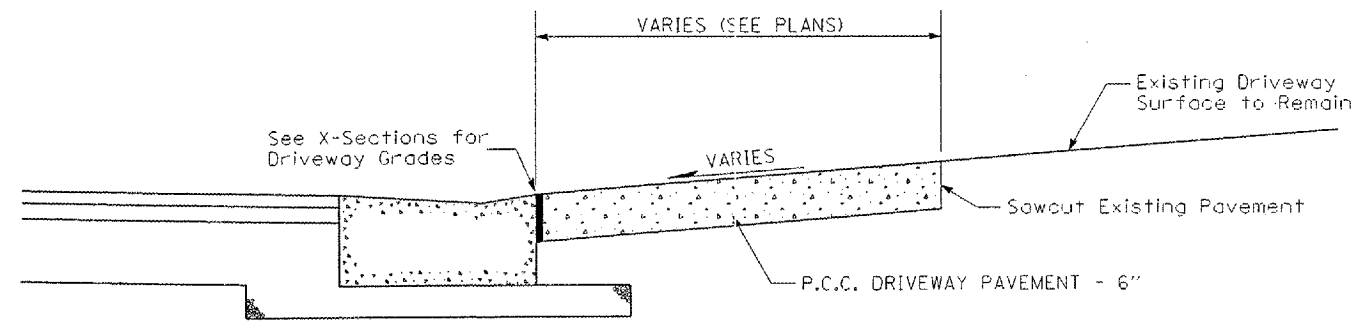
CATCH BASIN
 TYPE B (SPECIAL)
 STA 8+84.00, 29.80' RT (CENTER)



DETAIL OF PROPOSED
 COMBINATION CURB & GUTTER - TYPE B-6.18
 N.T.S.



PLAN



TYPICAL DRIVEWAY ENTRANCE
 N.T.S.

LOCATION	*WIDTH	LOCATION	*WIDTH
STA 6+08 LT	12	STA 24+16.80 RT	18
STA 9+01 RT	16	STA 24+20.30 LT	21
STA 14+12.70 RT	18	STA 25+29.36 LT	12
STA 14+47.40 LT	24	STA 26+54 LT	20
STA 15+38.30 LT	14	STA 27+07 LT	20
STA 15+49 RT	18	STA 28+09 LT	20
STA 15+79.30 LT	14.5	STA 28+76 LT	20
STA 17+01.20 RT	14	STA 29+34 LT	22
STA 17+14.30 LT	12	STA 30+00 LT	18
STA 18+06.65 LT	12	STA 32+54.50 LT	12
STA 18+32 RT	12	STA 32+81 LT	13
STA 18+60 RT	18	STA 34+26 RT	31
STA 18+95 RT	18	STA 44+31 RT	16
STA 19+20.30 LT	14	STA 45+86.30 RT	18
STA 20+31 RT	10	STA 50+20.40 RT	24
STA 20+76.15 LT	12.5	STA 51+58 RT	24
STA 23+55 LT	24		

DRAWN BY D.B.H.
 CHECKED BY W.G.M.
 APPROVED BY W.J.S.
 DATE JANUARY, 2006

CONSTRUCTION DETAILS

REVISIONS	
DATE	BY

MACOMB, ILLINOIS

Consulting Engineers / Land Surveyors
 1970 West Lafayette Avenue
 Jacksonville, Illinois 62650
 Phone : 217-245-4148
 Fax : 217-245-4149
 IL Design Firm Registration No. 184-000852