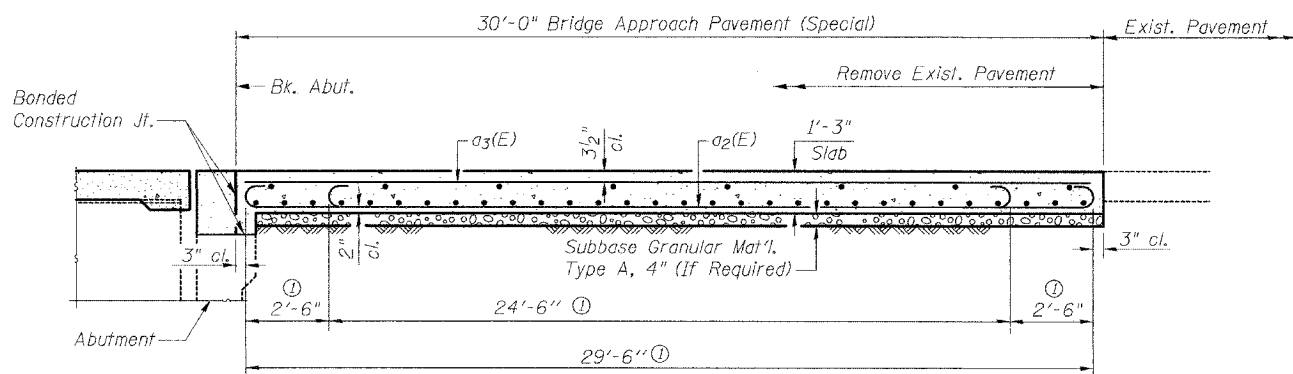


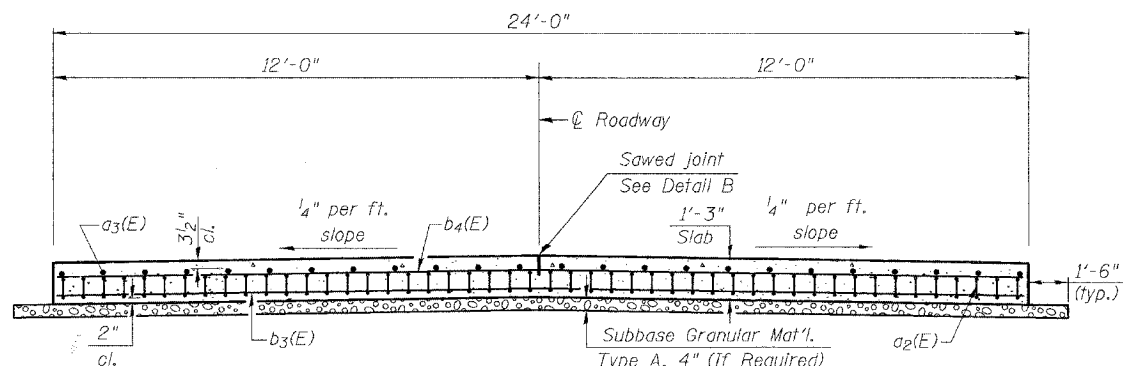
ROUTE NO.	SEC	COUNTY	TOTAL SHEETS	SHEET NO.
FAS RTE 1588	*	ADAMS	20	20
FED. ROAD DIST. NO. 7	ILLINOIS	PROJECT		

* 04-00185-00-BR



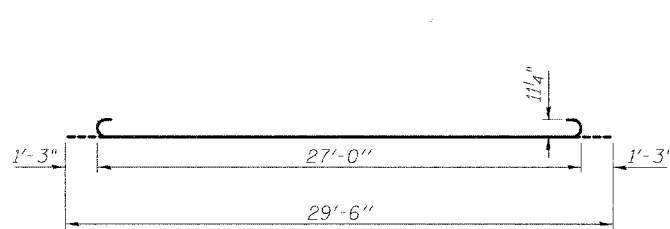
SECTION C-C

① Stagger a₂(E) bars as shown on plan - full width

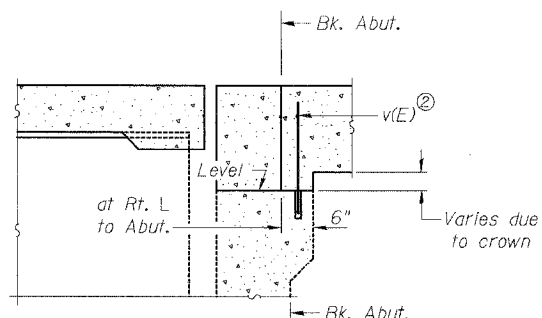


SECTION D-D

(See Plan for Dimensions not shown)

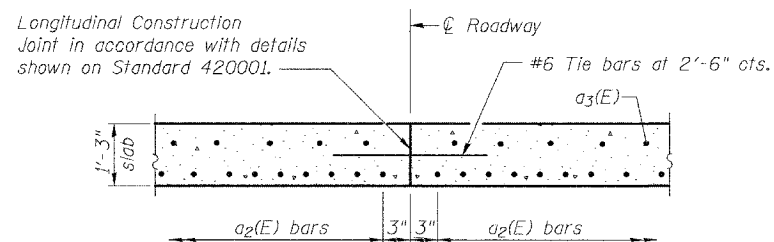


BAR a₂(E)



SECTION E-E

② v(E) bars are billed with the superstructure See Sheets #4 and #5 of 12.

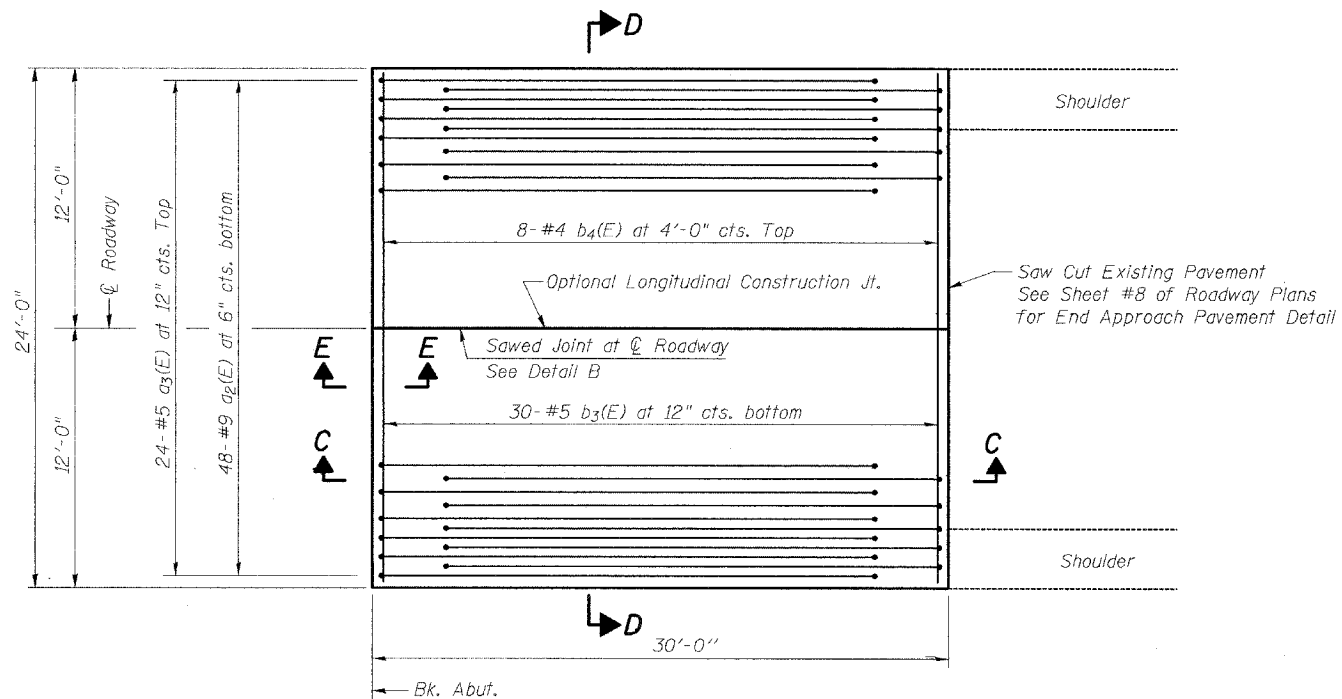


OPTIONAL LONGITUDINAL CONSTRUCTION JOINT

As approved by the Engineer, the Contractor may elect to reduce the width of pour by use of the Optional Longitudinal Construction Joint shown. Joints shall be located at centerline roadway.

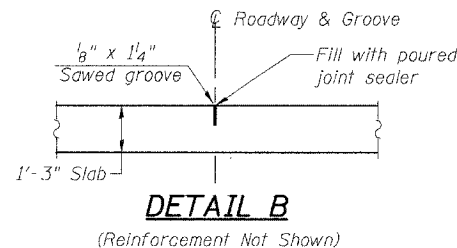
Notes:

Reinforcement bars designated (E) shall be epoxy coated. Cost of reinforcement bars, epoxy coated, concrete, sub-base granular material Type A, pavement removal, excavation to bottom of sub-base and optional longitudinal construction joint are included in the cost of "Bridge Approach Pavement (Special)". Provisions of Section 420 of Std. Specification shall apply.



PLAN

(East Bridge Approach Pavement shown, West Bridge Approach Pavement the same, except opposite hand)



DETAIL B

(Reinforcement Not Shown)

BRIDGE APPROACH PAVEMENT (SPECIAL)

BILL OF MATERIAL

(For one approach)

Bar	No.	Size	Length	Shape
a ₂ (E)	48	#9	29'-6"	
a ₃ (E)	24	#5	29'-6"	
b ₃ (E)	30	#5	23'-6"	
b ₄ (E)	8	#4	23'-6"	
Reinforcement Bars, Epoxy Coated			POUND	6,410

DESIGN STRESSES

f_y = 60,000 p.s.i.
f'c = 3,500 p.s.i.

REV. NO.	DRAWN	CHKD.	APPD.	DESCRIPTION	DATE
	BJG	WAW			03/04

F.A.S. RTE. 1588 OVER MCKEE CREEK
SECTION 04-00185-00-BR
Project RS-1588 (106)
ADAMS COUNTY

BRIDGE APPROACH PAVEMENT (SPECIAL)
STRUCTURE NUMBER 001-3026
STATION 314+60.75