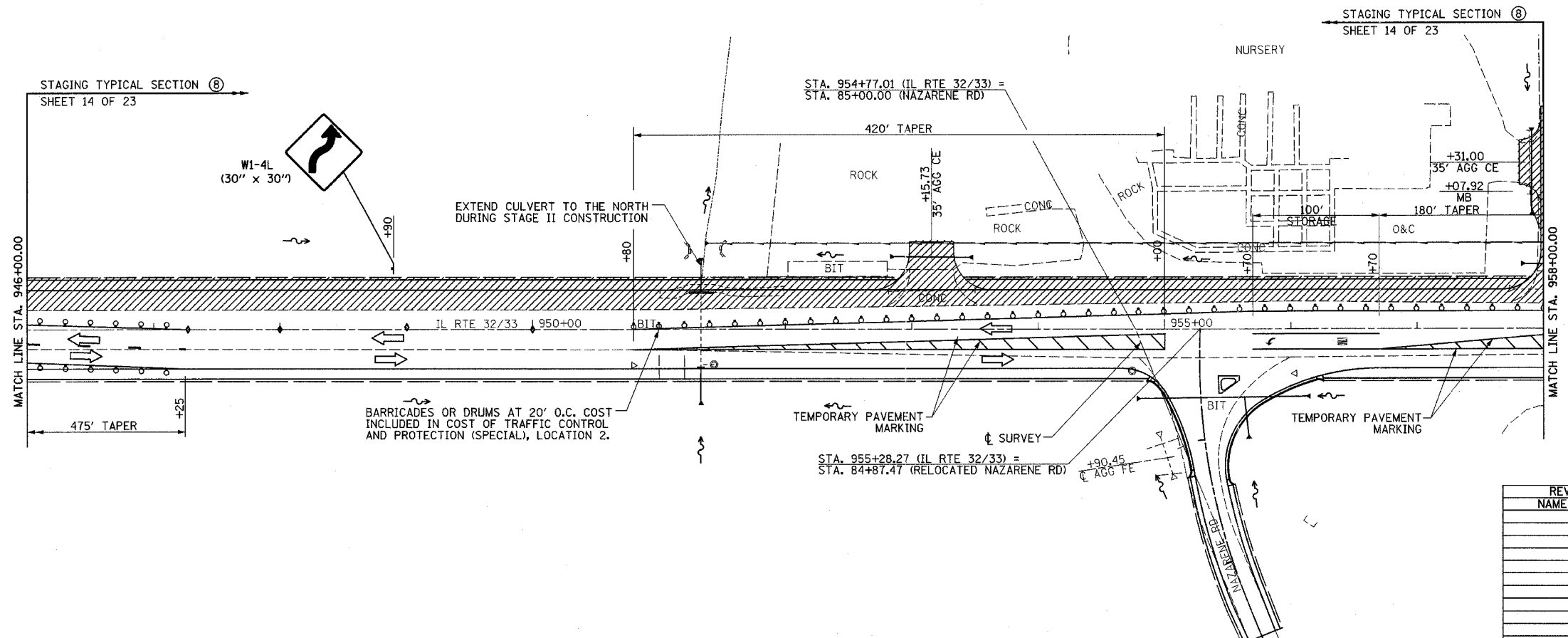
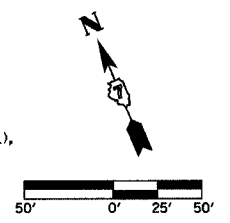
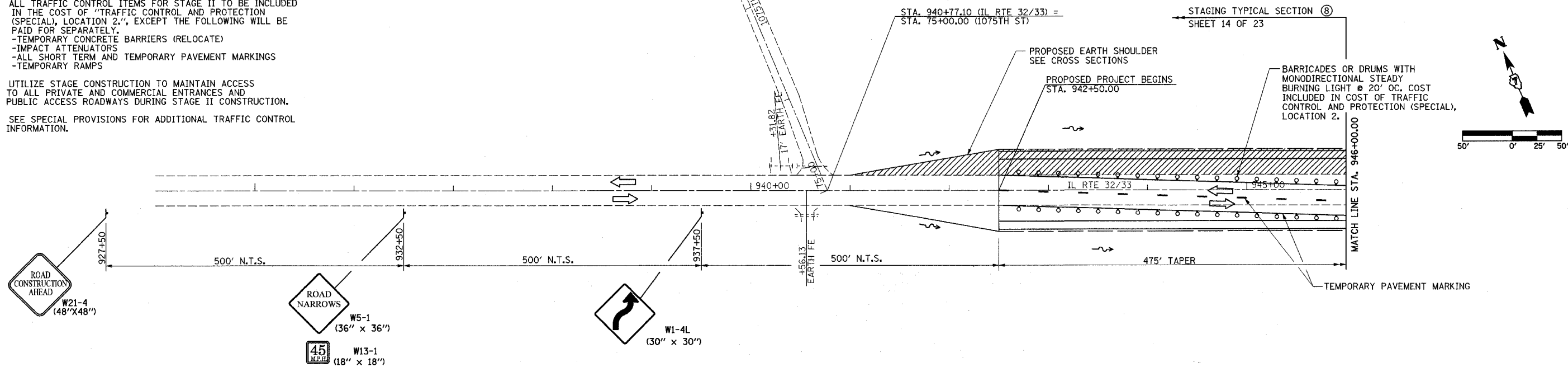


|                                    |         |                    |                  |           |
|------------------------------------|---------|--------------------|------------------|-----------|
| F.A.P. RTE.                        | SECTION | COUNTY             | TOTAL SHEETS     | SHEET NO. |
| 774                                | *       | EFFINGHAM          | 273              | 40        |
| FED. ROAD DIST. NO. 7              |         | ILLINOIS           | FED. AID PROJECT |           |
| *107WRS-1, 107BY, 107BY-1 & 107B-2 |         | CONTRACT NO. 94827 |                  |           |

**NOTES:**

1. MAINTAIN 2 LANE 2 WAY TRAFFIC ON IL ROUTE 32/33 THROUGHOUT DURATION OF STAGE II CONSTRUCTION.
2. FOR PROPOSED STAGE II TRAFFIC CONTROL TYPICAL SECTIONS, SEE SHEETS 14, 15 AND 16 OF 23.
3. ALL TRAFFIC CONTROL ITEMS FOR STAGE II TO BE INCLUDED IN THE COST OF "TRAFFIC CONTROL AND PROTECTION (SPECIAL), LOCATION 2.", EXCEPT THE FOLLOWING WILL BE PAID FOR SEPARATELY.
  - TEMPORARY CONCRETE BARRIERS (RELOCATE)
  - IMPACT ATTENUATORS
  - ALL SHORT TERM AND TEMPORARY PAVEMENT MARKINGS
  - TEMPORARY RAMPS
4. UTILIZE STAGE CONSTRUCTION TO MAINTAIN ACCESS TO ALL PRIVATE AND COMMERCIAL ENTRANCES AND PUBLIC ACCESS ROADWAYS DURING STAGE II CONSTRUCTION.
5. SEE SPECIAL PROVISIONS FOR ADDITIONAL TRAFFIC CONTROL INFORMATION.



| REVISIONS |      |
|-----------|------|
| NAME      | DATE |
|           |      |
|           |      |
|           |      |
|           |      |
|           |      |
|           |      |
|           |      |
|           |      |
|           |      |
|           |      |

ILLINOIS DEPARTMENT OF TRANSPORTATION

TRAFFIC CONTROL  
STAGE II CONSTRUCTION  
SHEET 9 OF 23

DATE 8/02

DRAWN BY ASB  
CHECKED BY RDW