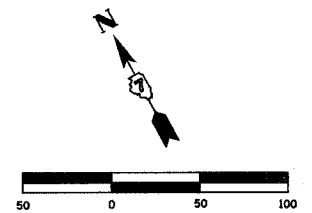
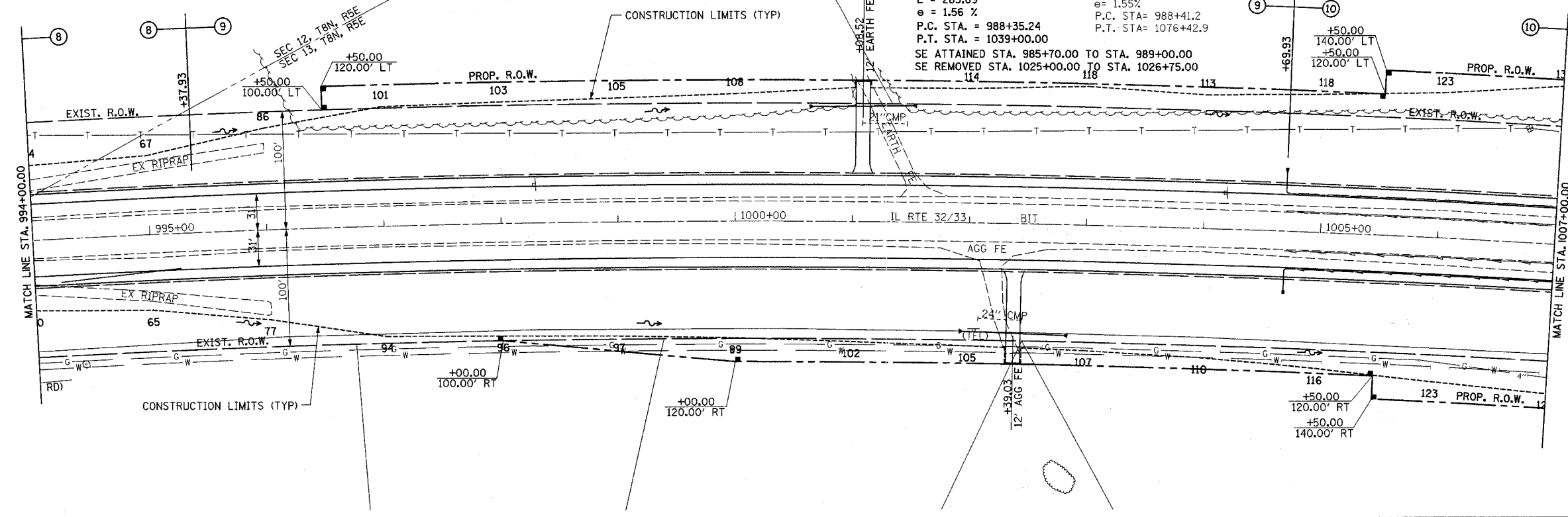


F.A.P. RTE.	SECTION	COUNTY	TOTAL SHEETS	SHEET NO.
774	*	EFFINGHAM	273	60
STA. 994+00.00 TO STA. 1007+00.00				
FED. ROAD DIST. NO. 7 ILLINOIS FED. AID PROJECT				
* 107WRS-1, 107BY, 107BY-1 & 107B-2				
<b>CONTRACT NO. 94827</b>				



**PROP. CURVE PROP5**  
 P.I. STA. = 1014+09.68  
 $\Delta = 25^\circ 19' 45''$  (RT)  
 $D = 0^\circ 30' 00''$   
 $R = 11,456.75'$   
 $T = 2,574.44'$   
 $L = 5,064.76'$   
 $E = 285.69'$   
 $e = 1.56\%$   
 P.C. STA. = 988+35.24  
 P.T. STA. = 1039+00.00  
 SE ATTAINED STA. 985+70.00 TO STA. 989+00.00  
 SE REMOVED STA. 1025+00.00 TO STA. 1026+75.00

**EXIST. CURVE C-3**  
 P.I. STA. = 1034+75.4  
 $\Delta = 44^\circ 02' 00''$   
 $D = 0^\circ 30' 00''$   
 $R = 11,459.2$   
 $T = 4633.6$   
 $L = 8806.7$   
 $E = 901.4$   
 $e = 1.55\%$   
 P.C. STA. = 988+41.2  
 P.T. STA. = 1076+42.9



- PIPE UNDERDRAIN REMOVAL**  
 LT STA. 1004+70.00 - STA. 1007+00.00 230'  
 RT STA. 1004+70.00 - STA. 1007+00.00 230'  
 TOTAL 460'
- PIPE UNDERDRAINS FABRIC LINED TRENCH, 6"**  
 LT STA. 1004+69.93 - STA. 1007+00.00 230'  
 RT STA. 1004+69.93 - STA. 1007+00.00 230'  
 TOTAL 460'
- PIPE UNDERDRAINS 6" (SPECIAL)**  
 LT STA. 1004+69.93 17'  
 RT STA. 1004+69.93 17'  
 TOTAL 34'
- CONCRETE HEADWALL FOR PIPE DRAINS**  
 LT STA. 1004+69.93 1 EACH  
 RT STA. 1004+69.93 1 EACH  
 TOTAL 2 EACH

PLAN	DATE
BY	
NO.	
NO.	
NO.	

PROFILE	DATE
BY	
NO.	
NO.	
NO.	

