

STATE OF ILLINOIS  
 DEPARTMENT OF TRANSPORTATION  
 DIVISION OF HIGHWAYS

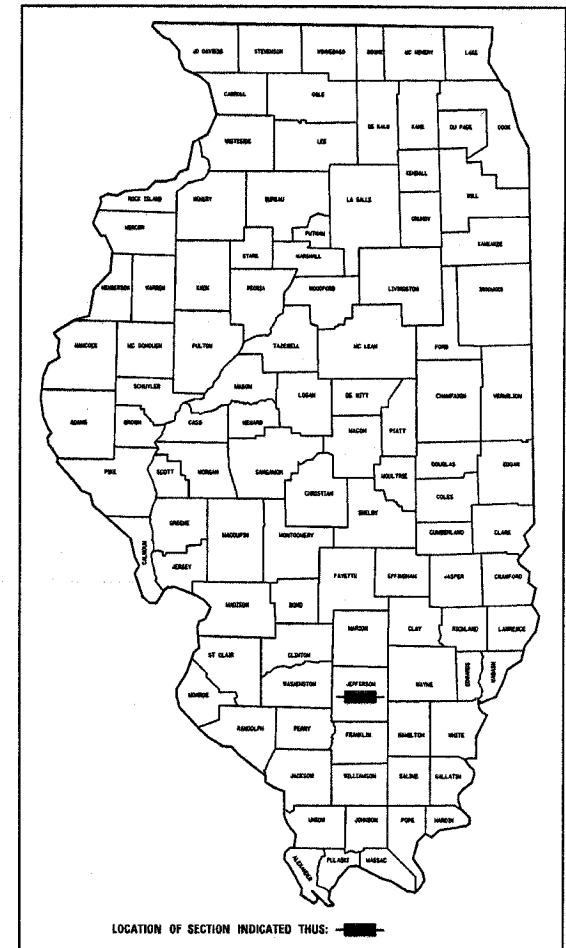
# PLANS FOR PROPOSED FEDERAL HIGHWAY PROJECT

FAP ROUTE 821 (IL ROUTE 15)  
 SECTION (14Z)TS-3  
 JEFFERSON COUNTY

FAP RTE.	SECTION	COUNTY	TOTAL SHEETS	SHEET NO.
821	(14Z)TS-3	JEFFERSON	9	1

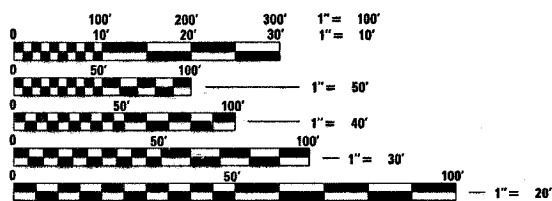
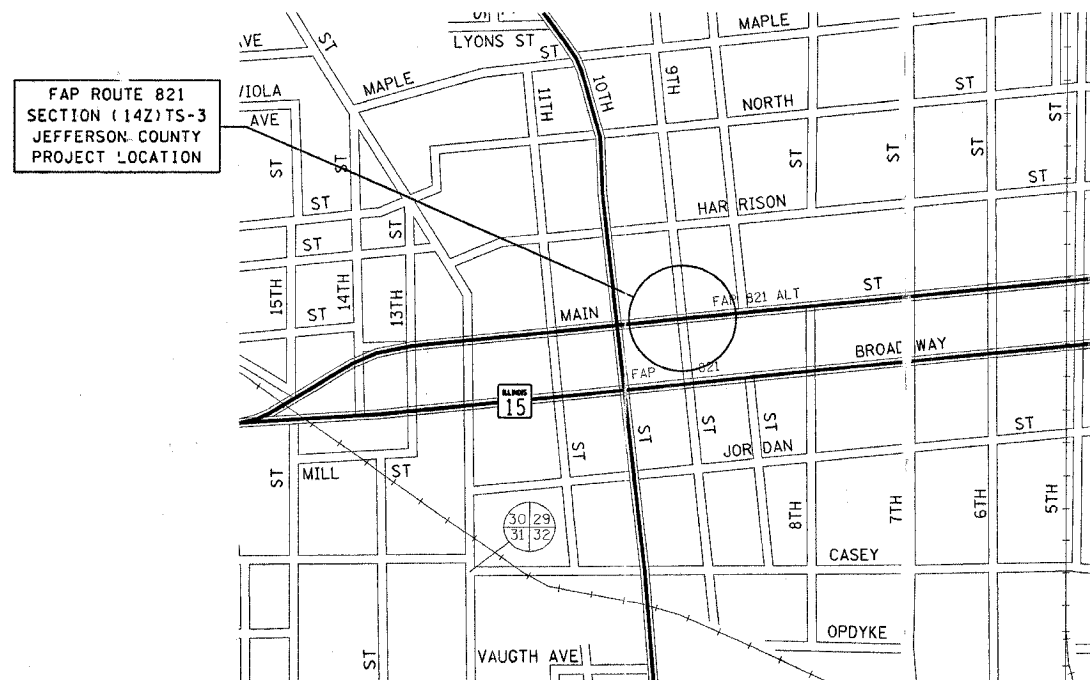
CONTRACT NO. 94888  
**D-97-057-03**

FOR INDEX OF SHEETS  
 SEE SHEET NO. 2.



C-97-075-03

MT. VERNON



FULL SIZE PLANS HAVE BEEN PREPARED USING STANDARD  
 ENGINEERING SCALES, REDUCED SIZED PLANS WILL NOT  
 CONFORM TO STANDARD SCALES, IN MAKING MEASUREMENTS  
 ON REDUCED PLANS, THE ABOVE SCALES MAY BE USED.

J.U.L.I.E.  
 JOINT UTILITY LOCATION INFORMATION FOR EXCAVATION  
 1-800-892-0123

**CONTRACT NO. 94888**

ADT (2003) = 9800 (WEST BOUND)

GROSS LENGTH =                    FEET =                    MILES  
 NET LENGTH =                    FEET =                    MILES

**SEAL**

STATE OF ILLINOIS  
 DEPARTMENT OF TRANSPORTATION  
 DIVISION OF HIGHWAYS

SUBMITTED FEB 8 20 05  
Chris H. Reed  
 DEPUTY DIRECTOR OF HIGHWAYS, REGION FOUR ENGINEER

\_\_\_\_\_  
 20

ENGINEER OF PROJECT DEVELOPMENT AND IMPLEMENTATION  
March 25, 20 05  
Mike Hine  
 ENGINEER OF DESIGN AND ENVIRONMENT

\_\_\_\_\_  
March 25, 20 05  
Victor Mader  
 DIRECTOR, DIVISION OF HIGHWAYS

PRINTED BY THE AUTHORITY OF  
 THE STATE OF ILLINOIS

c:\projects\94888\p\d05703p.dgn  
 stefhenk.e.dale

PROJECT ENGINEER : ROB MACKLIN  
 SQUAD LEADER :  
 DESIGNER : LYNN McCLELLAN  
 TELEPHONE : 217/342-3951 EX. 245

TOWNSHIP : MOUNT VERNON