

STATE OF ILLINOIS
 DEPARTMENT OF TRANSPORTATION
 DIVISION OF HIGHWAYS

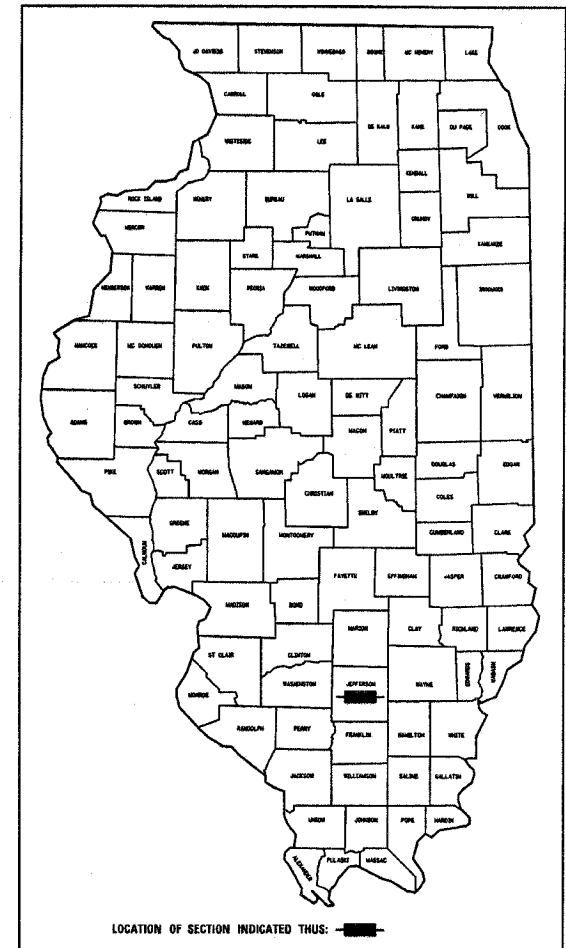
PLANS FOR PROPOSED FEDERAL HIGHWAY PROJECT

FAP ROUTE 821 (IL ROUTE 15)
 SECTION (14Z)TS-3
 JEFFERSON COUNTY

FAP RTE.	SECTION	COUNTY	TOTAL SHEETS	SHEET NO.
821	(14Z)TS-3	JEFFERSON	9	1

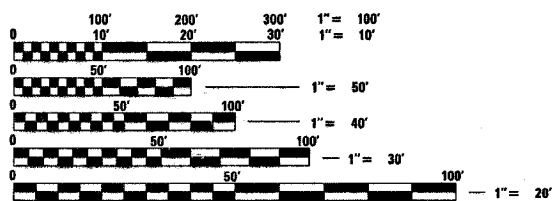
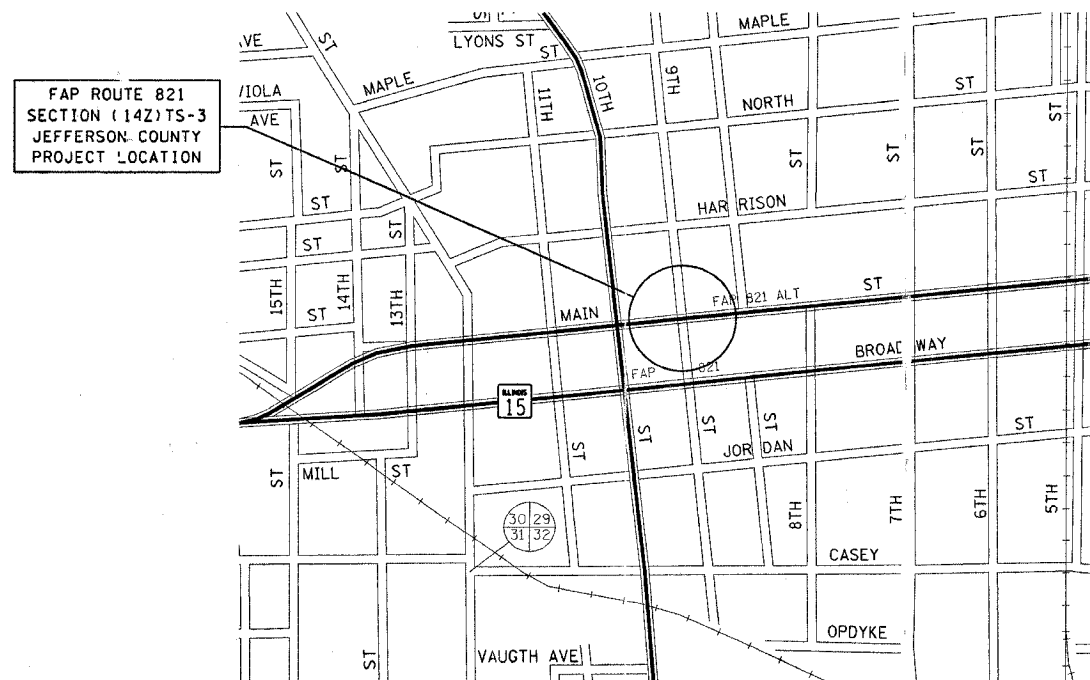
CONTRACT NO. 94888
D-97-057-03

FOR INDEX OF SHEETS
 SEE SHEET NO. 2.



C-97-075-03

MT. VERNON



FULL SIZE PLANS HAVE BEEN PREPARED USING STANDARD
 ENGINEERING SCALES, REDUCED SIZED PLANS WILL NOT
 CONFORM TO STANDARD SCALES, IN MAKING MEASUREMENTS
 ON REDUCED PLANS, THE ABOVE SCALES MAY BE USED.

J.U.L.I.E.
 JOINT UTILITY LOCATION INFORMATION FOR EXCAVATION
 1-800-892-0123

CONTRACT NO. 94888

ADT (2003) = 9800 (WEST BOUND)

GROSS LENGTH = FEET = MILES
 NET LENGTH = FEET = MILES

SEAL

STATE OF ILLINOIS
 DEPARTMENT OF TRANSPORTATION
 DIVISION OF HIGHWAYS

SUBMITTED FEB 8 20 05
Christ H. Reed
 DEPUTY DIRECTOR OF HIGHWAYS, REGION FOUR ENGINEER

 20

ENGINEER OF PROJECT DEVELOPMENT AND IMPLEMENTATION
March 25, 20 05
Mike Hine
 ENGINEER OF DESIGN AND ENVIRONMENT

March 25, 20 05
Victor Mader
 DIRECTOR, DIVISION OF HIGHWAYS

PRINTED BY THE AUTHORITY OF
 THE STATE OF ILLINOIS

c:\projects\94888\p\d05703pa.dgn
 stefenmk\DATE

PROJECT ENGINEER : ROB MACKLIN
 SQUAD LEADER :
 DESIGNER : LYNN MCCLELLAN
 TELEPHONE : 217/342-3951 EX. 245

TOWNSHIP : MOUNT VERNON

steffermk
2/8/2005
c:\projects\94888\05703pa.dgn

GEN IND

FAP NO.	SECTION	COUNTY	TOTAL SHEETS	SHEET NO.
821	(142)TS-3	JEFFERSON	9	2
FED. ROAD DIST. NO. 1	ILLINOIS	FED. AID PROJECT NO.		

CONTRACT NO. 94888

GENERAL NOTES

THIS SECTION SHALL BE CONSTRUCTED IN ACCORDANCE WITH THE PLANS, THE "STANDARD SPECIFICATIONS FOR ROAD AND BRIDGE CONSTRUCTION", ADOPTED JANUARY 1, 2002; THE "SUPPLEMENTAL SPECIFICATIONS AND RECURRING SPECIAL PROVISIONS" ADOPTED MARCH 1, 2005; AND "THE SPECIAL PROVISIONS" INCLUDED IN THE PROPOSAL.

THIS PROJECT IS LOCATED AT THE INTERSECTION OF IL ROUTE 15 AND NINTH STREET IN THE CITY OF MT. VERNON, IN JEFFERSON COUNTY. THE WORK INCLUDED IN THIS SECTION CONSISTS OF INSTALLING TRAFFIC AND PEDESTRIAN SIGNALS AND ALL OTHER WORK NECESSARY TO COMPLETE THIS SECTION.

THE CONTRACTOR SHALL VERIFY THE EXACT LOCATION OF ALL UNDERGROUND UTILITIES PRIOR TO BEGINNING CONSTRUCTION. CALL J. U. L. I. E. AT 1-800-892-0123.

THE TRAFFIC OPERATIONS UNIT CHIEF AT THE ILLINOIS DEPARTMENT OF TRANSPORTATION SHALL BE NOTIFIED AT 217-342-8284 AT LEAST 72 HOURS PRIOR TO TURNING ON ANY FLASHER OR CONTROLLER UNIT.

ALL HANDICAP RAMPS SHALL BE IN STRICT ACCORDANCE WITH THE STANDARDS SHOWN IN THE PLANS. AVERAGING OF DIMENSIONS TO MEET THE STANDARDS WILL NOT BE ALLOWED. FINAL PLACEMENT OF RAMPS WILL BE DETERMINED IN THE FIELD BY THE ENGINEER.

THE LOCATION OF ALL TRAFFIC COMPONENTS AS SHOWN ON THE PLANS ARE APPROXIMATE ONLY. THE FINAL LOCATION SHALL BE DETERMINED BY THE ENGINEER IN THE FIELD.

THE CONTRACTOR SHALL BE RESPONSIBLE FOR OBTAINING ELECTRICAL SERVICE FOR THE TRAFFIC SIGNAL INSTALLATION. THE CONTRACTOR SHALL CONTACT THE UTILITY COMPANY PRIOR TO BEGINNING WORK TO OBTAIN THE UTILITY COMPANY REQUIREMENTS FOR THE SERVICE INSTALLATION.

THE CONTROLLER CABINET SHALL BE PLACED SO THAT A TECHNICIAN CAN SEE THE INTERSECTION OVER THE TOP OF THE CABINET WHILE WATCHING THE COMPONENTS IN THE CABINET.

THE CONTRACTOR SHALL ARRANGE FOR A FACTORY OR SUPPLIER REPRESENTATIVE TO BE PRESENT AT THE INTERSECTION WHEN THE SIGNALS ARE TURNED ON. THE REPRESENTATIVE SHALL MAKE CERTAIN THAT ALL EQUIPMENT OPERATES TO THE SATISFACTION OF THE ENGINEER.

ALL HARDWARE SHALL BE TIGHTENED AND WELL SECURED. CABLES SHALL BE NEATLY WOUND IN HANDHOLES. CABLES SHALL BE NEATLY TRAINED IN THE CONTROLLER CABINET.

ALL THREADS OF BOLTS USED IN ASSEMBLY OF TRAFFIC SIGNAL COMPONENTS SHALL BE COATED WITH A NON-LEAD BASED ANTI-SEIZE COMPOUND, SIMILAR TO LEAD PLATE, PRIOR TO ASSEMBLY.

NO ADDITIONAL COMPENSATION WILL BE ALLOWED FOR PLACING CONDUIT AT GREATER THAN 2 FOOT MINIMUM DEPTH TO AVOID OBSTACLES SUCH AS UNDERGROUND UTILITIES.

THE CONTRACTOR IS RESPONSIBLE FOR UNCOVERING OR HAND DIGGING AROUND UTILITIES AS NECESSARY. THE COST OF THIS WORK IS TO BE INCLUDED WITH THE TRENCH AND BACKFILL FOR ELECTRICAL WORK PAY ITEM.

THE NUMBER OF CONDUCTORS FOR ELECTRIC CABLES AS SHOWN ON THE PLANS SHALL BE THE MINIMUM NUMBER OF CONDUCTORS FURNISHED FOR EACH LOCATION. THE CONTRACTOR MAY SUBSTITUTE AN ELECTRIC CABLE WITH MORE CONDUCTORS THAN SPECIFIED BUT NO ADDITIONAL COMPENSATION WILL BE MADE FOR THE EXTRA CONDUCTORS.

ALL NEW TRAFFIC AND PEDESTRIAN SIGNAL WIRING SHALL EXTEND FROM CONTROLLER TO SIGNAL. SPLICES IN HANDHOLES WILL NOT BE ALLOWED.

ALL MAST ARM MOUNTED SIGNAL HEADS ON AN INDIVIDUAL MAST ARM SHALL BE MOUNTED SO THAT THE RED INDICATIONS ARE LEVEL WITH EACH OTHER.

TRAFFIC SIGNAL HEADS SHALL BE PROPERLY COVERED PRIOR TO INTERSECTION TURN-ON OR AS DIRECTED BY THE ENGINEER. THIS COST SHALL BE INCLUDED WITH THE COST OF THE ASSOCIATED SIGNAL HEAD PAY ITEMS.

ALL TRAFFIC SIGNAL MAST ARM ASSEMBLIES (STANDARD, COMBINATION, OR DUAL) MUST BE DESIGNED FOR THE LOADINGS SHOWN ON THE HIGHWAY STANDARDS OR THESE SIGNAL PLANS, WHICHEVER IS GREATER.

THE LUMINAIRE MAST ARM SHALL BE 8 FEET FOR THE NORTHWEST AND SOUTHWEST STEEL COMBINATION MAST ARM ASSEMBLY AND POLE. THE LUMINAIRE ARM SHALL BE SITUATED SO THAT IT PROTRUDES FROM THE POLE IN THE SAME DIRECTION AS THE MAST ARM. THE LUMINAIRE MAST ARM ON THE STEEL POLE IN THE SOUTHEAST CORNER, SHALL BE 3 FEET. THE LUMINAIRE MOUNTING HEIGHT ON ALL THREE POLES SHALL BE 30 FEET.

THE EXISTING LIGHTING UNITS TO BE REMOVED SHALL REMAIN THE PROPERTY OF THE CITY OF MT. VERNON, AND BE DELIVERED TO THE CITY OF MT. VERNON.

THE CONTRACTOR SHALL INSTALL THE LUMINAIRES ON THE MAST ARMS AND PULL THE WIRING FROM THE LUMINAIRES TO THE HANDHOLES. THE UTILITY COMPANY WILL PULL THE REMAINING WIRE AND MAKE THE NECESSARY CONNECTIONS.

CITY OF MT. VERNON CONTACT:
ELBERT CAIN
SUPERVISOR OF PUBLIC WORKS
1100 MAIN ST.
MT. VERNON, IL 62864

FOR ELECTRICAL SERVICE CONTACT:
BRENT BARTLEY
AMERENIP
2610 BROADWAY
MR. VERNON, IL 62864
1-618-244-8220

INDEX OF SHEETS

- 1 COVER SHEET
- 2 INDEX OF SHEETS AND GENERAL NOTES
- 3 SUMMARY OF QUANTITIES
- 4 TRAFFIC SIGNAL LAYOUT
- 5 PLAN SHEET
- 6 REMOVAL ITEMS
- 7 PAVEMENT MARKING DETAILS
- 8 TRAFFIC SIGNAL SCHEMATIC AND DETAILS
- 9 POLE STANDARDS

THE FOLLOWING STANDARDS ARE A PART OF THESE PLANS AND ARE INCLUDED AFTER SHEET NO. 9

- 000001-04 STANDARD SYMBOLS, ABBREVIATIONS, AND PATTERNS
- 424001-03 CURB RAMPS FOR SIDEWALKS
- 606001-02 CONCRETE CURB TYPE B AND COMBINATION CONCRETE CURB AND GUTTER
- 701006-02 OFF-ROAD OPERATIONS, 2L, 2W, 15' TO 24" FROM PAVEMENT EDGE
- 701301-02 LANE CLOSURE, 2L, 2W, SHORT TIME OPERATION
- 701501-03 URBAN LANE CLOSURE, 2L, 2W, UNDIVIDED
- 701601-04 URBAN LANE CLOSURE, MULTILANE 1W OR 2W WITH NONTRAVERSABLE MEDIAN
- 701701-04 URBAN LANE CLOSURE, MULTILANE INTERSECTION
- 701801-03 LANE CLOSURE, MULTILANE 1W OR 2W CROSSWALK OR SIDEWALK CLOSURE
- 702001-05 TRAFFIC CONTROL DEVICES
- 720001 SIGN PANEL MOUNTING DETAILS
- 720016-01 MAST ARM MOUNTED STREET NAME SIGNS
- 805001 ELECTRICAL SERVICE INSTALLATION DETAILS
- 814001 CONCRETE HANDHOLES
- 814006 DOUBLE HANDHOLES
- 857001 STANDARD PHASE DESIGNATION DIAGRAMS AND PHASE SEQUENCES
- 877001-02 STEEL MAST ARM ASSEMBLY AND POLE
- 877011-02 STEEL COMBINATION MAST ARM ASSEMBLY AND POLE
- 878001-03 CONCRETE FOUNDATION DETAILS
- 880006 TRAFFIC SIGNAL MOUNTING DETAILS

REVISIONS	
NAME	DATE

ILLINOIS DEPARTMENT OF TRANSPORTATION

**GENERAL NOTES
&
INDEX OF SHEETS**

SCALE: VERT.
HORIZ.
DATE

DRAWN BY
CHECKED BY

steffenmk
2/8/2005
c:\projects\94888d\05703pa.dgn

SUMMARY OF QUANTITIES

FAP NO.	SECTION	COUNTY	TOTAL SHEETS	SHEET NO.
821	(142)TS-3	JEFFERSON	9	3
FED. ROAD DIST. NO. 7		ILLINOIS	FED. AID PROJECT NO.	

CONTRACT NO. 94888

SUMMARY OF QUANTITIES			URBAN TOTAL QUANTITIES	CONSTRUCTION TYPE CODE	
CODE NO	ITEM	UNIT		Y031-IF 50% STATE 50% CITY	Y030-1E 100% CITY
* 42400100	PORTLAND CEMENT CONCRETE SIDEWALK 4 INCH	SQ FT	943	943	
* 44000500	COMBINATION CURB AND GUTTER REMOVAL	FOOT	40	40	
* 44004700	SIDEWALK REMOVAL (SPECIAL)	SQ FT	1223	1223	
* 60604500	COMBINATION CONCRETE CURB AND GUTTER, TYPE B-6.18 (ABUTTING EXISTING PAVEMENT)	FOOT	40	40	
67100100	MOBILIZATION	L SUM	1	1	
70102620	TRAFFIC CONTROL AND PROTECTION, STANDARD 701501	L SUM	1	1	
70102630	TRAFFIC CONTROL AND PROTECTION, STANDARD 701601	L SUM	1	1	
70102635	TRAFFIC CONTROL AND PROTECTION, STANDARD 701701	L SUM	1	1	
70102640	TRAFFIC CONTROL AND PROTECTION, STANDARD 701801	L SUM	1	1	
* 72000100	SIGN PANEL - TYPE 1	SQ FT	8	8	
* 72000200	SIGN PANEL - TYPE 2	SQ FT	20	20	
* 78000400	THERMOPLASTIC PAVEMENT MARKING - LINE 6"	FOOT	515	515	
* 78000600	THERMOPLASTIC PAVEMENT MARKING - LINE 12"	FOOT	28	28	
* 78000650	THERMOPLASTIC PAVEMENT MARKING - LINE 24"	FOOT	117	117	
78300100	PAVEMENT MARKING REMOVAL	SQ FT	409	409	
80500205	SERVICE INSTALLATION, TYPE B (MODIFIED)	EACH	1	1	
81012600	CONDUIT IN TRENCH, 2" DIA., PVC	FOOT	105	54	51
81013000	CONDUIT IN TRENCH, 4" DIA., PVC	FOOT	68	38	30
81021590	CONDUIT, AUGERED 4" DIA., PVC	FOOT	395	198	197
81100600	CONDUIT ATTACHED TO STRUCTURE, 2" DIA., GALVANIZED STEEL	FOOT	32		32
81400100	HANDHOLE	EACH	7	3	4
81400300	DOUBLE HANDHOLE	EACH	1	1	
81500200	TRENCH AND BACKFILL FOR ELECTRICAL WORK	FOOT	173	92	81
81702450	ELECTRIC CABLE IN CONDUIT, 600V (XLP-TYPE USE) 3-1/C NO. 10	FOOT	143		143
82102250	LUMINAIRE, SODIUM VAPOR, HORIZONTAL MOUNT, 250 WATT	EACH	3		3
83028300	LIGHT POLE, STEEL, 30 FT. M.H., 8 FT. MAST ARM	EACH	1	1	
84200500	REMOVAL OF EXISTING LIGHTING UNIT, SALVAGE	EACH	3	3	
84200700	LIGHTING FOUNDATION REMOVAL	EACH	3	3	
86300300	CONTROLLER CABINET TYPE III	EACH	1	1	

SUMMARY OF QUANTITIES			URBAN TOTAL QUANTITIES	CONSTRUCTION TYPE CODE	
CODE NO	ITEM	UNIT		Y031-IF 50% STATE 50% CITY	Y030-1E 100% CITY
87301245	ELECTRIC CABLE IN CONDUIT, SIGNAL NO. 14 5C	FOOT	1343	1343	
87301255	ELECTRIC CABLE IN CONDUIT, SIGNAL NO. 14 7C	FOOT	484	484	
87301805	ELECTRIC CABLE IN CONDUIT, SERVICE, NO. 6 2 C	FOOT	31	31	
87700220	STEEL MAST ARM ASSEMBLY AND POLE, 36 FT.	EACH	1	1	
87702860	STEEL COMBINATION MAST ARM ASSEMBLY AND POLE 26 FT.	EACH	1	1	
87702950	STEEL COMBINATION MAST ARM ASSEMBLY AND POLE 44 FT.	EACH	1	1	
87800200	CONCRETE FOUNDATION, TYPE D	FOOT	3.5	3.5	
87800400	CONCRETE FOUNDATION, TYPE E 30-INCH DIAMETER	FOOT	10	10	
87800415	CONCRETE FOUNDATION, TYPE E 36-INCH DIAMETER	FOOT	35	35	
88200410	TRAFFIC SIGNAL BACKPLATE, LOUVERED, FORMED PLASTIC	EACH	9	9	
88800100	PEDESTRIAN PUSH-BUTTON	EACH	8	8	
X8801300	SIGNAL HEAD, POLYCARBONATE, LED, 1-FACE, 3-SECTION, BRACKET MOUNTED	EACH	2	2	
X8801310	SIGNAL HEAD, POLYCARBONATE, LED, 1-FACE, 3-SECTION, MAST ARM MOUNTED	EACH	7	7	
X8810495	PEDESTRIAN SIGNAL HEAD, POLYCARBONATE, LED, 2-FACE, BRACKET MOUNTED	EACH	4	4	

* SPECIALTY ITEMS

REVISIONS	
NAME	DATE

ILLINOIS DEPARTMENT OF TRANSPORTATION

SUMMARY OF QUANTITIES

SCALE: VERT. HORIZ. DATE

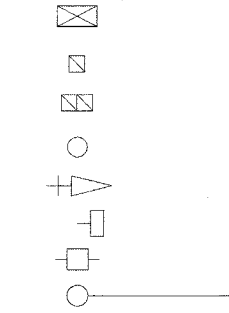
DRAWN BY CHECKED BY

stefmkm
2/8/2005
c:\projects\94888d\05703psa.dgn

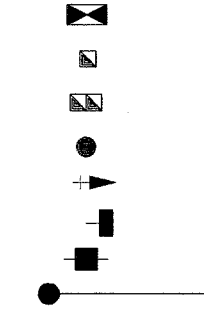


LEGEND

EXISTING



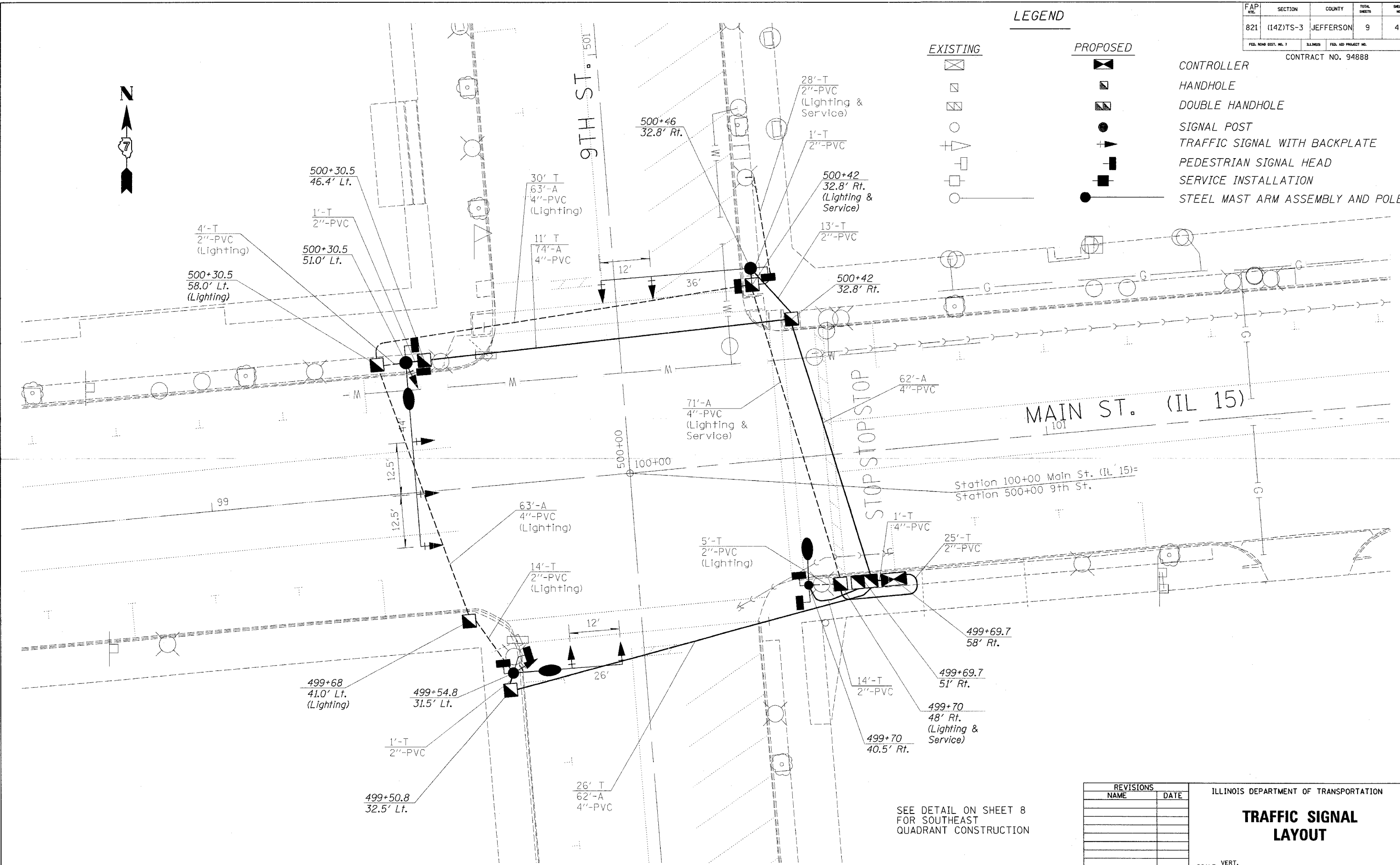
PROPOSED



CONTROLLER
HANDHOLE
DOUBLE HANDHOLE
SIGNAL POST
TRAFFIC SIGNAL WITH BACKPLATE
PEDESTRIAN SIGNAL HEAD
SERVICE INSTALLATION
STEEL MAST ARM ASSEMBLY AND POLE

FAP No.	SECTION	COUNTY	TOTAL SHEETS	SHEET NO.
821	(14Z)TS-3	JEFFERSON	9	4

FED. ROAD DIST. NO. 7 ILLINOIS FED. AID PROJECT NO. CONTRACT NO. 94888



SEE DETAIL ON SHEET 8
FOR SOUTHEAST
QUADRANT CONSTRUCTION

REVISIONS	
NAME	DATE

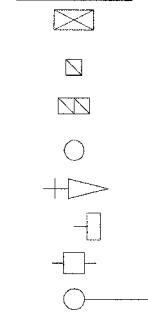
ILLINOIS DEPARTMENT OF TRANSPORTATION
TRAFFIC SIGNAL LAYOUT
SCALE: VERT. DATE
HORIZ. DATE
DRAWN BY
CHECKED BY

steffemk
2/18/2005
c:\projects\94888d\d05703pe.dgn

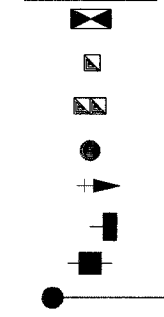


LEGEND

EXISTING

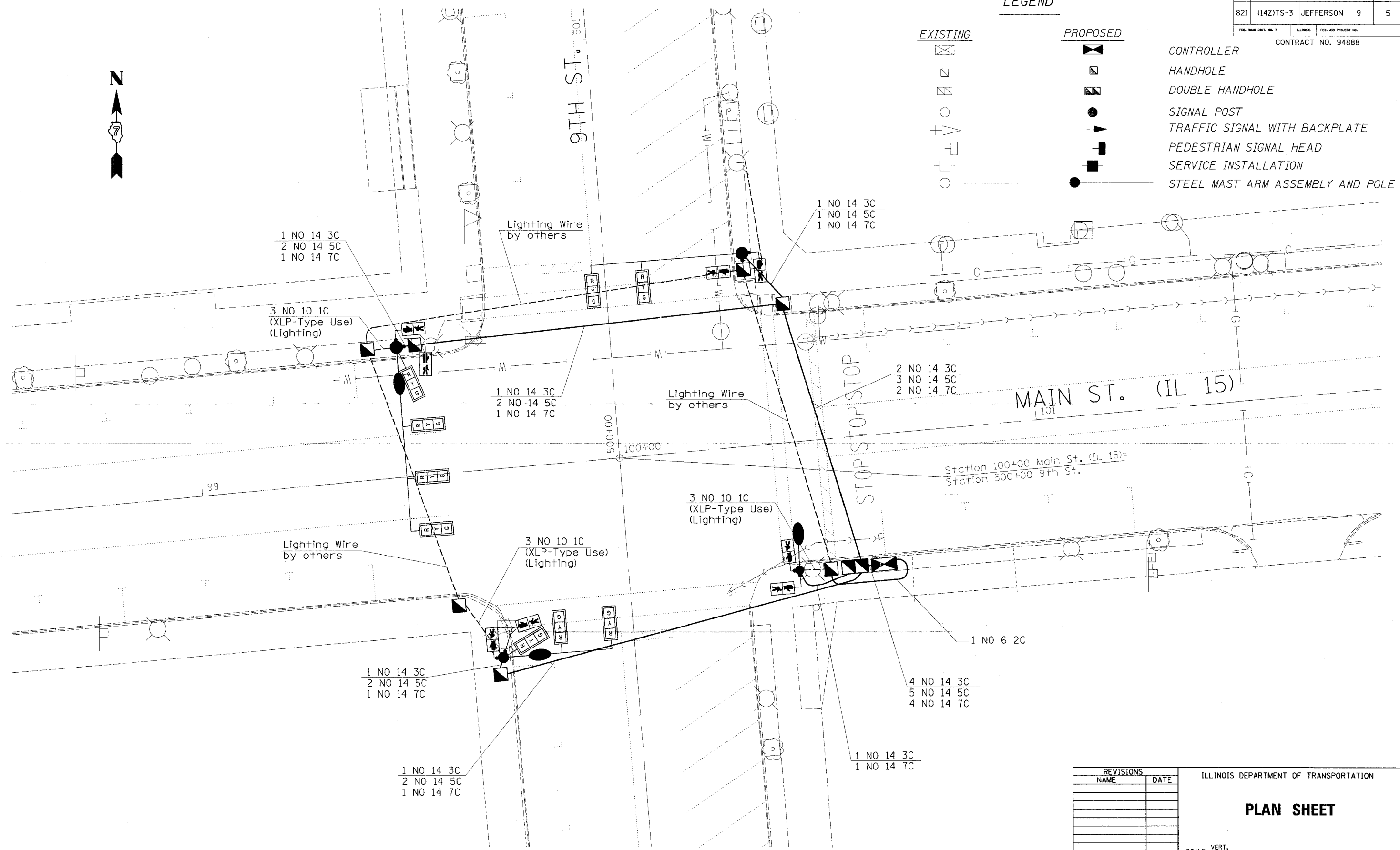


PROPOSED



- CONTROLLER
- HANDHOLE
- DOUBLE HANDHOLE
- SIGNAL POST
- TRAFFIC SIGNAL WITH BACKPLATE
- PEDESTRIAN SIGNAL HEAD
- SERVICE INSTALLATION
- STEEL MAST ARM ASSEMBLY AND POLE

FAP RT.	SECTION	COUNTY	TOTAL SHEETS	SHEET NO.
821	(142)TS-3	JEFFERSON	9	5
FED. ROAD DIST. NO. 7		ILLINOIS	FED. AID PROJECT NO.	
CONTRACT NO. 94888				



REVISIONS	
NAME	DATE

ILLINOIS DEPARTMENT OF TRANSPORTATION

PLAN SHEET

SCALE: VERT.
HORIZ.

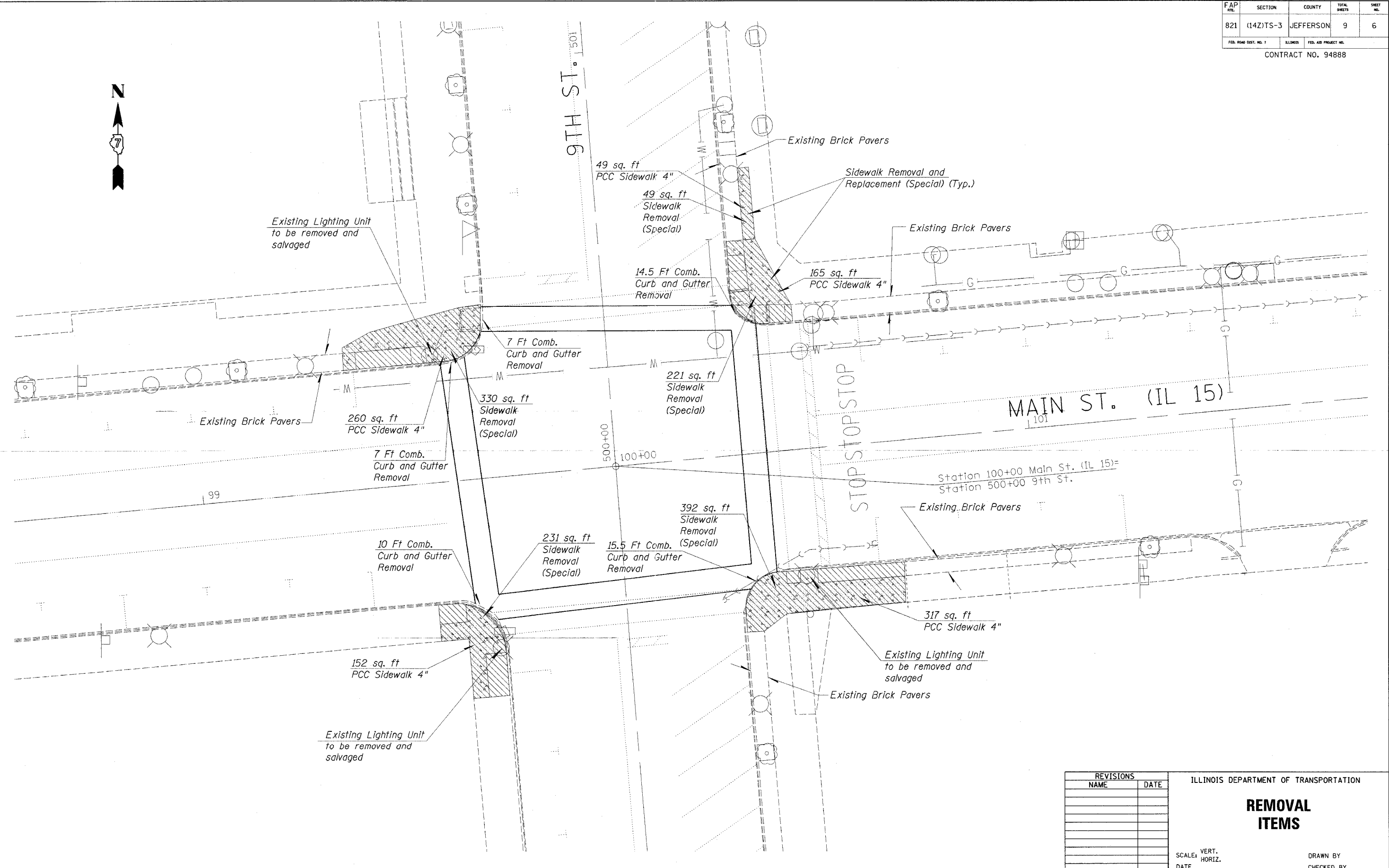
DATE

DRAWN BY
CHECKED BY

staffemk
2/8/2005
c:\projects\94888a\d05703pa.dgn

FAP NO.	SECTION	COUNTY	TOTAL SHEETS	SHEET NO.
821	(14Z)TS-3	JEFFERSON	9	6
FED. ROAD DIST. NO. 1		ILLINOIS	FED. AID PROJECT NO.	

CONTRACT NO. 94888



REVISIONS	
NAME	DATE

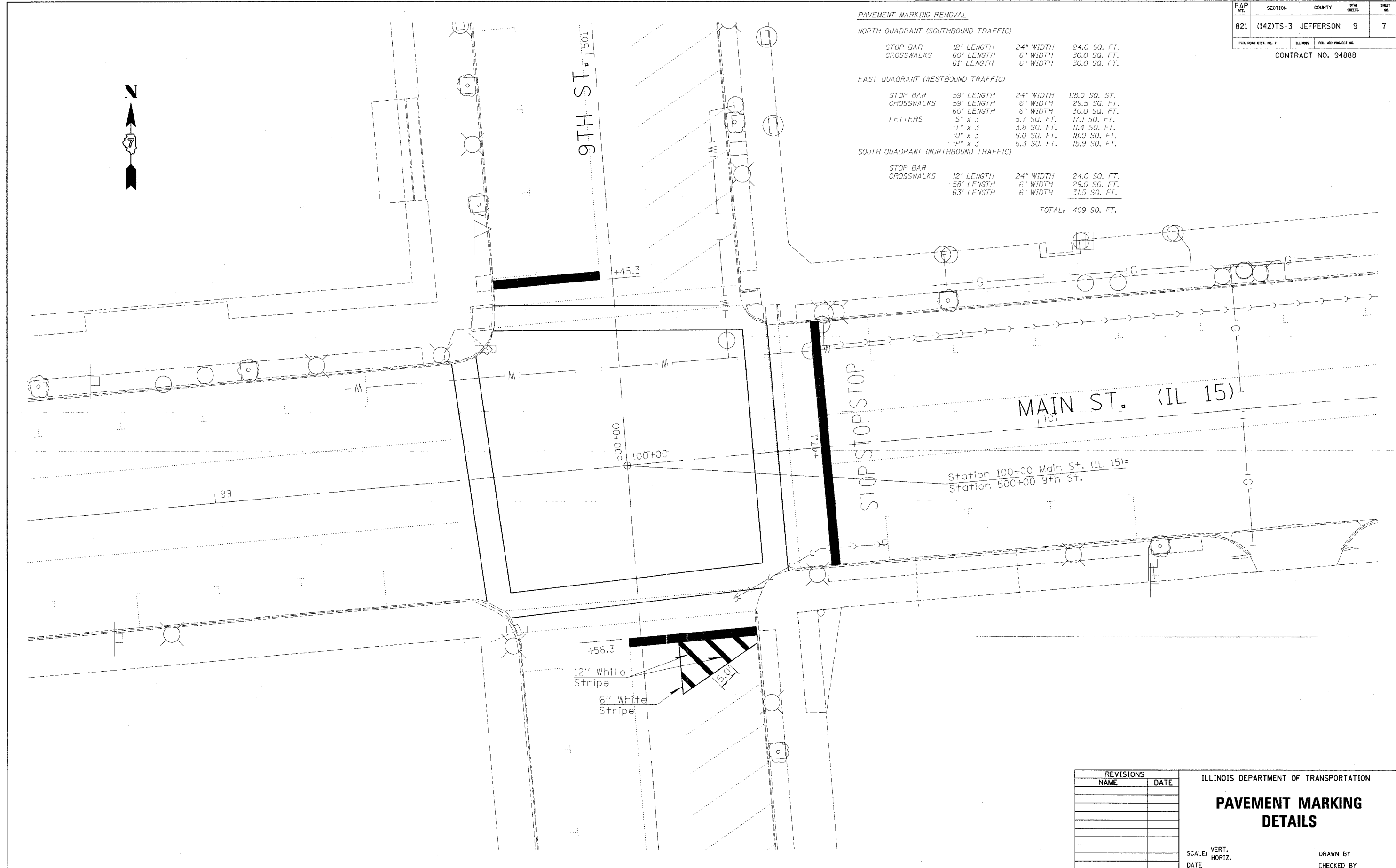
ILLINOIS DEPARTMENT OF TRANSPORTATION

REMOVAL ITEMS

SCALE: VERT.
HORIZ.
DATE

DRAWN BY
CHECKED BY

stef fenmk
2/8/2005
c:\projects\94888d\d05703pa.dgn



PAVEMENT MARKING REMOVAL

NORTH QUADRANT (SOUTHBOUND TRAFFIC)			
STOP BAR	12' LENGTH	24" WIDTH	24.0 SQ. FT.
CROSSWALKS	60' LENGTH	6" WIDTH	30.0 SQ. FT.
	61' LENGTH	6" WIDTH	30.0 SQ. FT.
EAST QUADRANT (WESTBOUND TRAFFIC)			
STOP BAR	59' LENGTH	24" WIDTH	118.0 SQ. FT.
CROSSWALKS	59' LENGTH	6" WIDTH	29.5 SQ. FT.
	60' LENGTH	6" WIDTH	30.0 SQ. FT.
LETTERS	"S" x 3	5.7 SQ. FT.	17.1 SQ. FT.
	"T" x 3	3.8 SQ. FT.	11.4 SQ. FT.
	"O" x 3	6.0 SQ. FT.	18.0 SQ. FT.
	"P" x 3	5.3 SQ. FT.	15.9 SQ. FT.
SOUTH QUADRANT (NORTHBOUND TRAFFIC)			
STOP BAR	12' LENGTH	24" WIDTH	24.0 SQ. FT.
CROSSWALKS	58' LENGTH	6" WIDTH	29.0 SQ. FT.
	63' LENGTH	6" WIDTH	31.5 SQ. FT.
			TOTAL: 409 SQ. FT.

FAP RTE.	SECTION	COUNTY	TOTAL SHEETS	SHEET NO.
821	(142)TS-3	JEFFERSON	9	7
FED. ROAD DIST. NO. 7		ILLINOIS	FED. AID PROJECT NO.	
CONTRACT NO. 94888				

REVISIONS	
NAME	DATE

ILLINOIS DEPARTMENT OF TRANSPORTATION

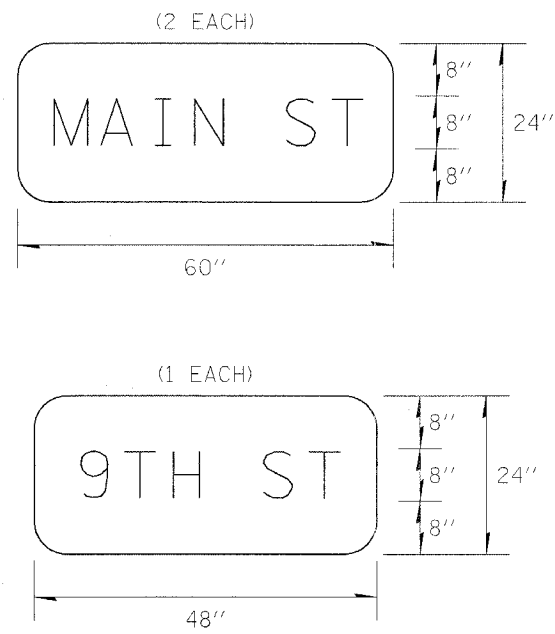
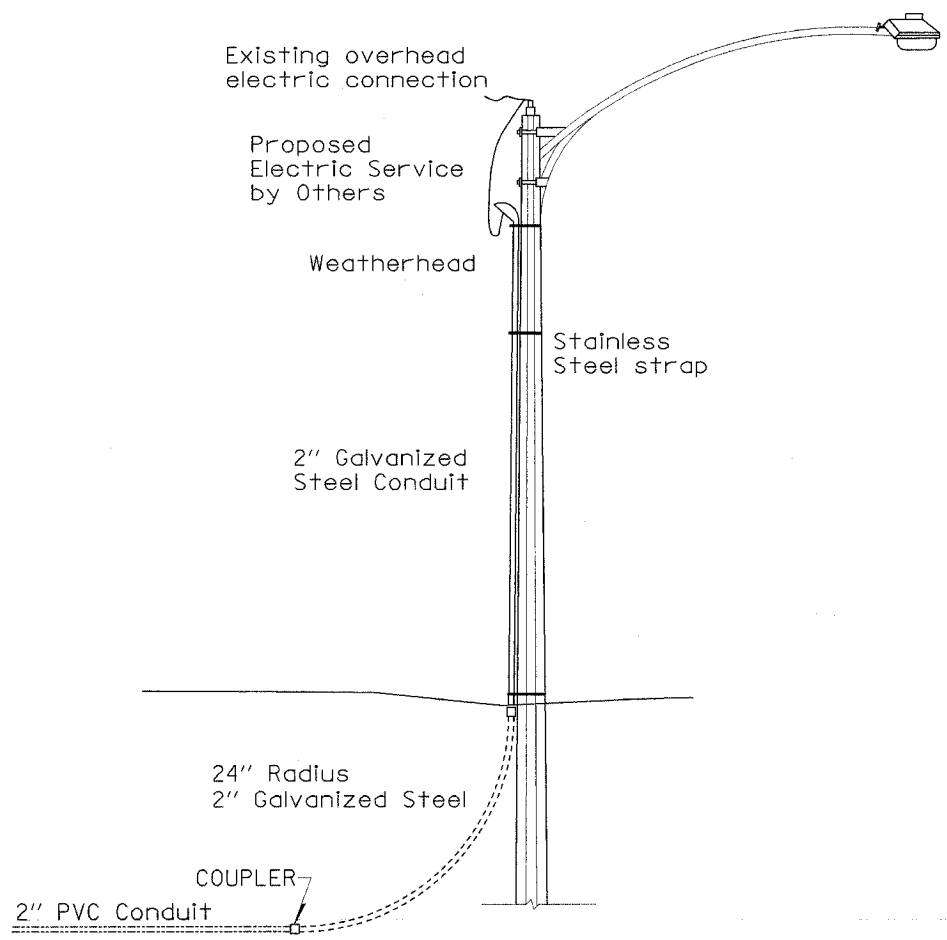
**PAVEMENT MARKING
DETAILS**

SCALE: VERT.
DATE: HORIZ.

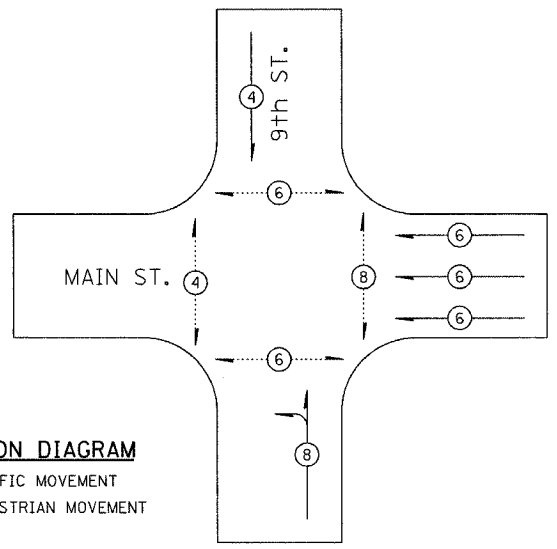
DRAWN BY
CHECKED BY

stef fenmk
2/8/2005
c:\projects\94888d\05703psa.dgn

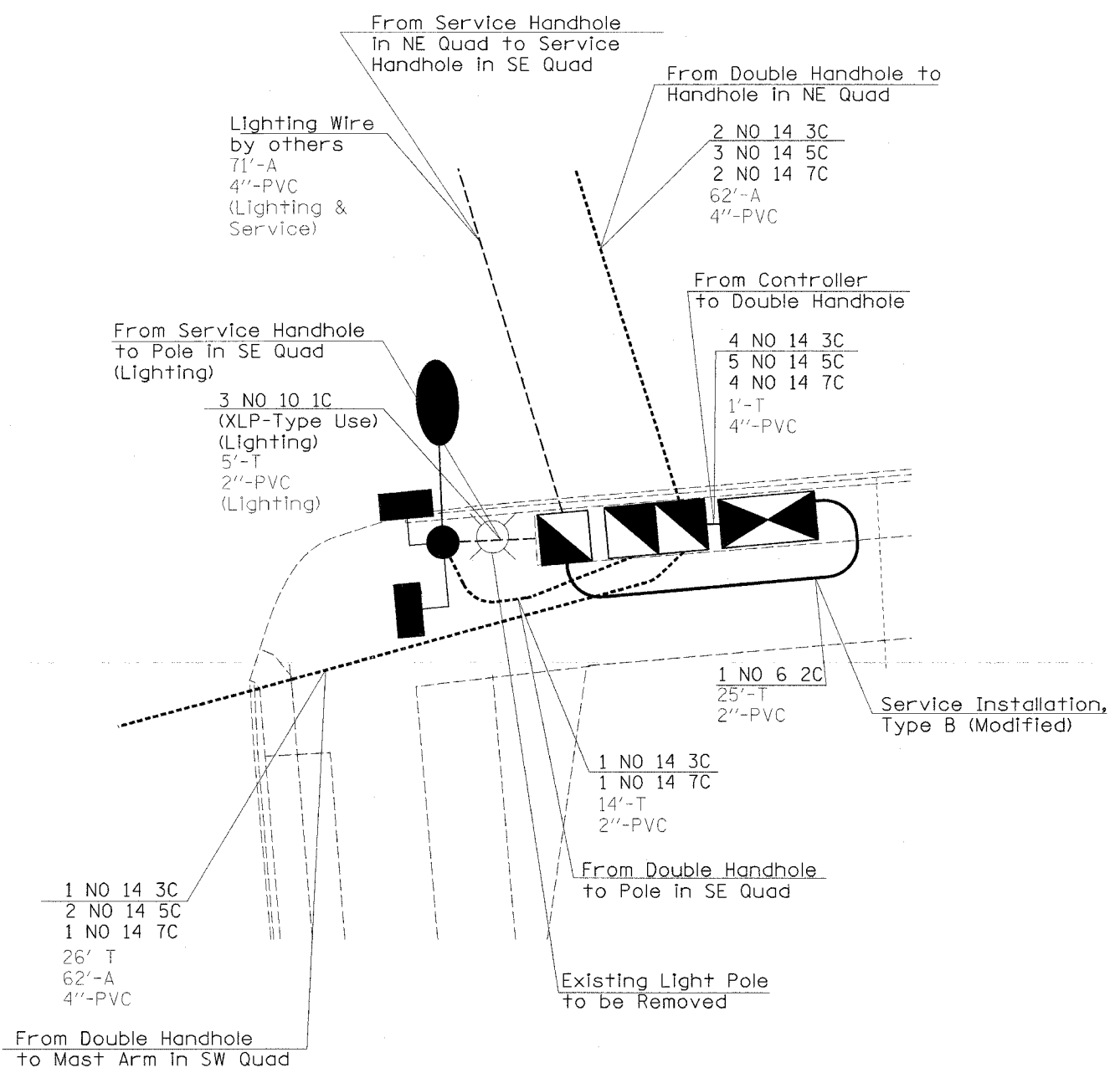
FAP #	SECTION	COUNTY	TOTAL SHEETS	SHEET NO.
821	(14Z)TS-3	JEFFERSON	9	8
FED. ROAD DIST. NO. 1		ILLINOIS	FED. AID PROJECT NO.	
CONTRACT NO. 94888				



TO EXISTING LIGHT POLE
(TO BE REMOVED AND SALVAGED)



PHASE DESIGNATION DIAGRAM
 (4) → TRAFFIC MOVEMENT
 (4) - - - PEDESTRIAN MOVEMENT



SE QUADRANT DETAIL

REVISIONS	
NAME	DATE

ILLINOIS DEPARTMENT OF TRANSPORTATION

TRAFFIC SIGNAL SCHEMATIC

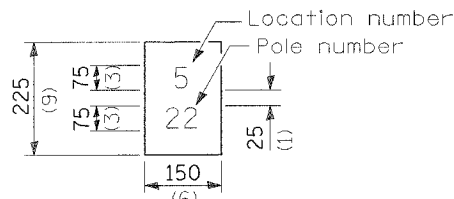
SCALE: VERT. DATE
HORIZ.

DRAWN BY
CHECKED BY

Rev.

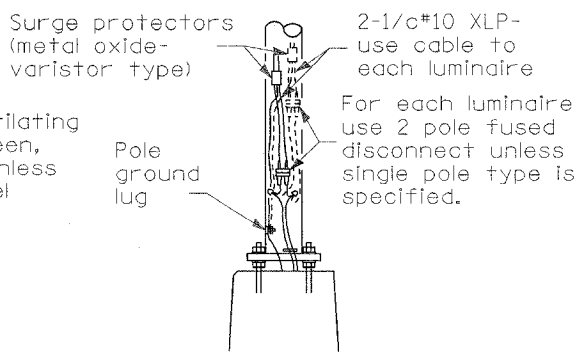
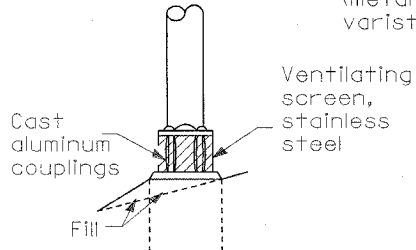
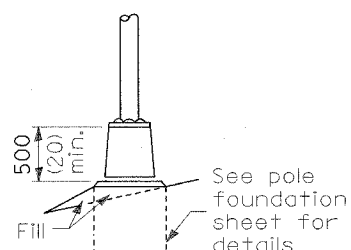
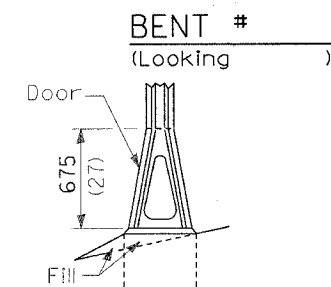
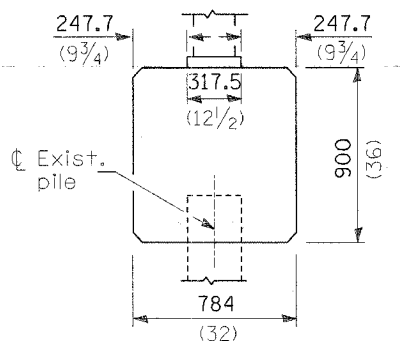
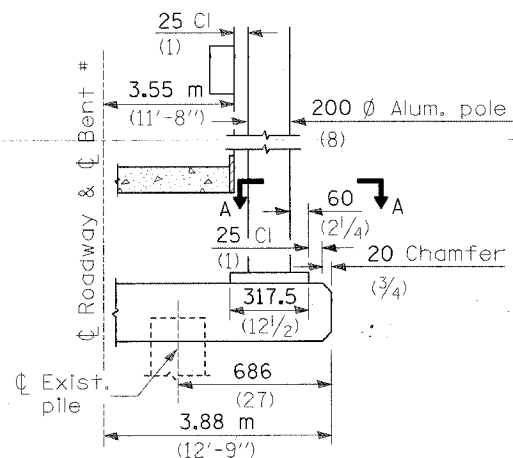
"Install and orient arm bracket over pole tenon and firmly hand tighten the two set screws. Use third hole in arm bracket as a guide to drill a 8.3 (5/16) diameter hole through tenon. Install and tighten self-tapping screw. Tighten set screws an additional (1/4 to 3/8) turn with hex key (not provided). Install locknuts on set screws if threaded projection allows."

Pole shall meet AASHTO Standard Specifications for 128.72 km (80 mph) wind loading and 40.82 kg (90 lb.), .37 m² (4.0 sq. ft.) E.P.A. luminaire.



The contractor shall furnish and install a light pole identification of each new light pole, as shown above, incidental to the respective light pole pay item. The numerals shall be 75 (3) series "D", black, screened on silver-white type B pressure sensitive reflective sheeting conforming to the requirements of section T602.01 of the Standard Specifications for Traffic Control Items. The numerals shall conform to the FHWA "Standard Alphabets for Highway Signs".

The light pole identification shall be applied to sign base material as specified in section 1085.05 of the Standard Specifications, approximately 180 (7) above the adjacent pavement grade visible to approaching traffic in accordance with Highway Standard 2319.



STAINLESS STEEL FLAIR BASE

TRANSFORMER BASE

BREAKAWAY COUPLING

FRANGIBLE

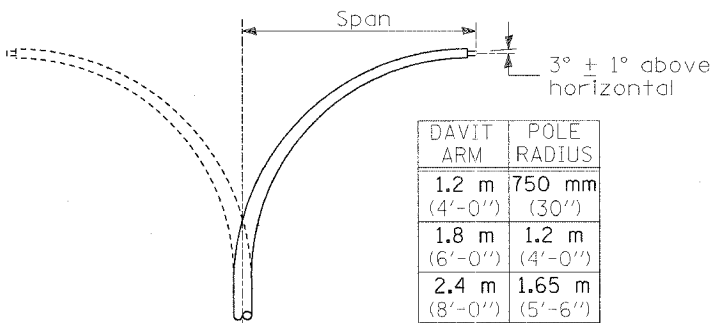
METAL OR CONCRETE

Details for underground distribution if required

TWIN TENON

TENON MOUNT BRACKET ARM

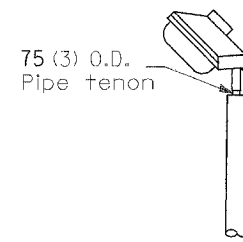
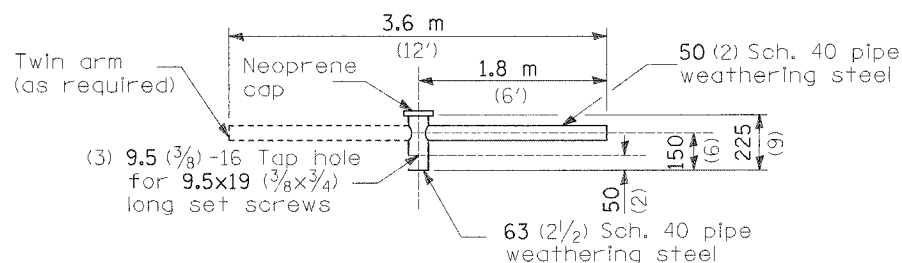
NOTE: Single or twin arm assembly shall be tilted 3° above horizontal.



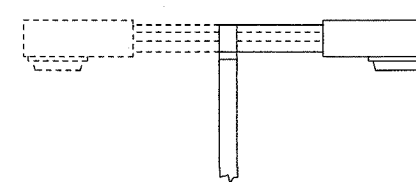
DAVIT ARM	POLE RADIUS
1.2 m (4'-0")	750 mm (30")
1.8 m (6'-0")	1.2 m (4'-0")
2.4 m (8'-0")	1.65 m (5'-6")

DAVIT ARM (and or)

DAVIT ARM-TWIN

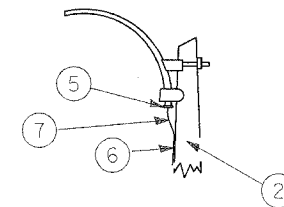


TENON

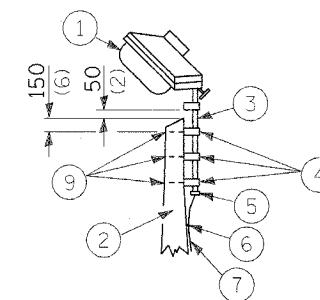


SHORT BRACKET

SHORT BRACKET - TWIN

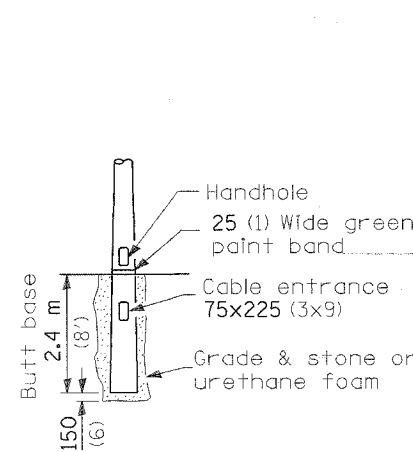


MAST ARM

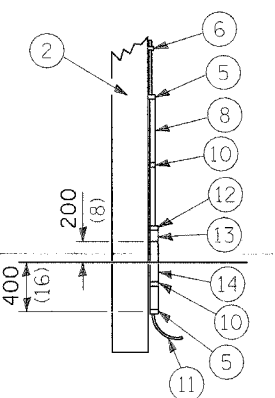


TENON

- ① Luminaire
- ② Wood pole, class 3 or better
- ③ 63 (2 1/2) Galv. steel conduit
- ④ Single offset pole band
- ⑤ Conduit bushing
- ⑥ Cable clamps on 600 (24) centers
- ⑦ 2/c #12 Type use cable
- ⑧ 25 (1) Galv. steel conduit 3.0 m (10') in length
- ⑨ 16 (5/8) Ø hot dipped galvanized bolt with flat washer & locknut (3 req'd)
- ⑩ Conduit clamps on 900 (36) centers
- ⑪ Unit duct
- ⑫ Threaded reducer
- ⑬ "C" Condulet, threaded
- ⑭ 40 (1 1/2) Galv. steel conduit for 1 unit duct or 75 (3) galv. steel conduit for 2 or 3 unit ducts.



BUTT BASE



POLE, WOOD

POLE LENGTH	DEPTH IN GROUND
19.8 m (65')	3.6 m (12')
18.0 m (60')	3.0 m (10')
16.8 m (55')	2.7 m (9')
16.0 m (50')	2.4 m (8')
13.7 m (45')	2.1 m (7')
12.0 m (40')	2.0 m (6.5')
10.7 m (35')	1.8 m (6')
9.0 m (30')	1.7 m (5.5')

All dimensions are in millimeters (inches) unless otherwise shown.

DATE	REVISIONS

POLE STANDARDS