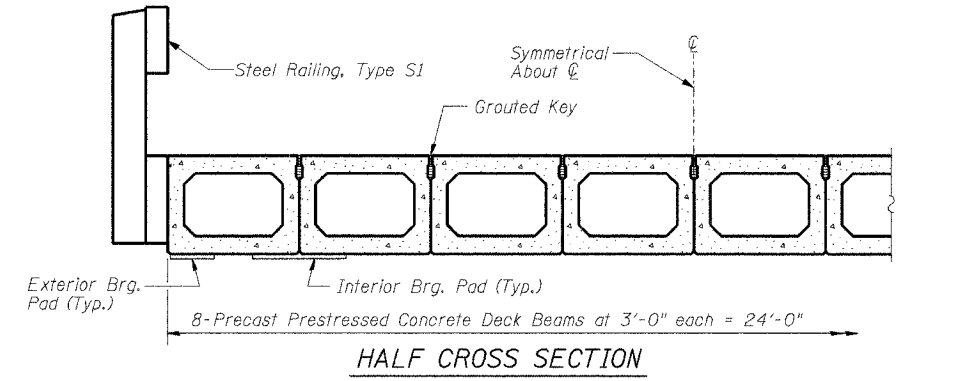
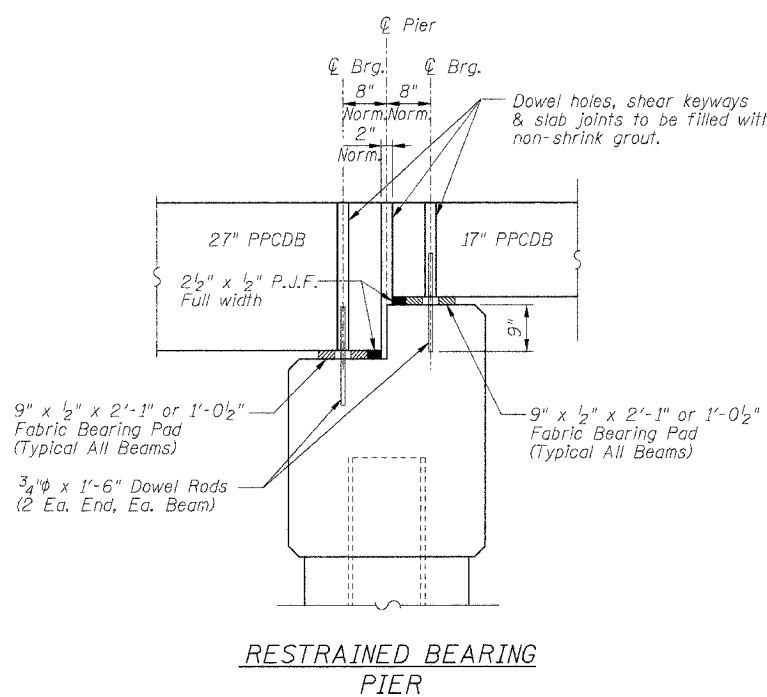
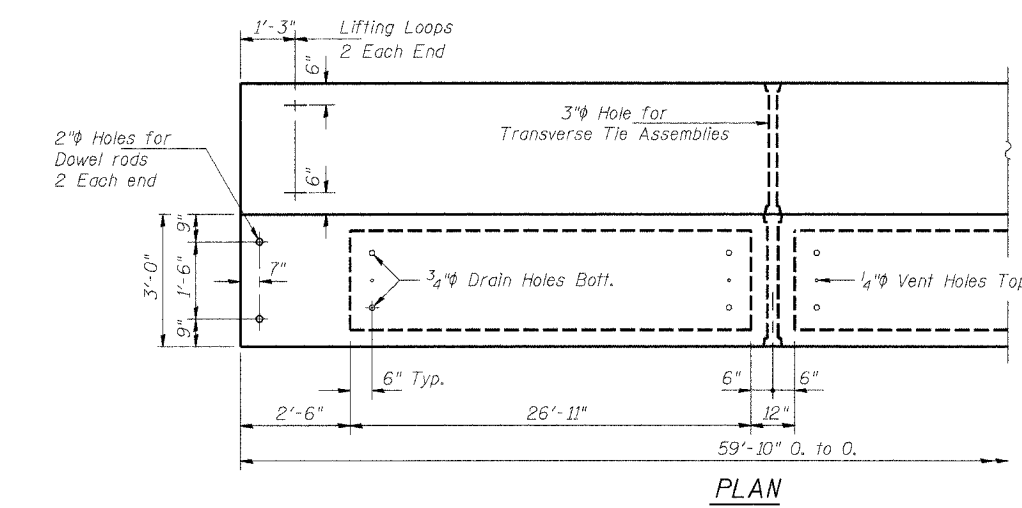
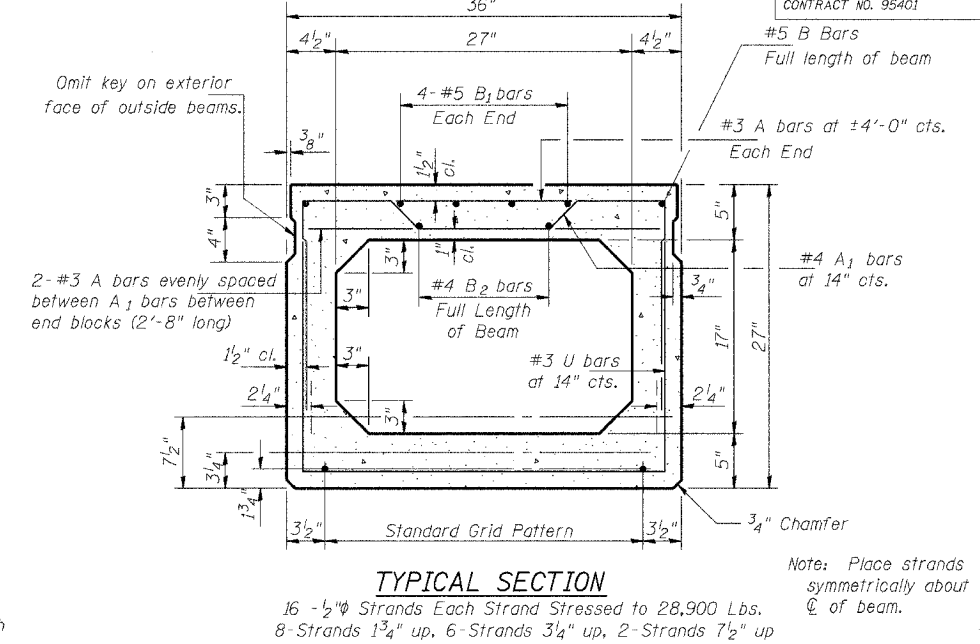
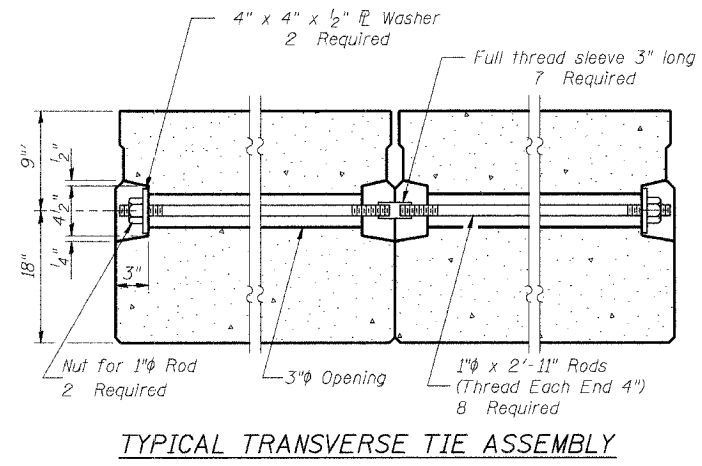
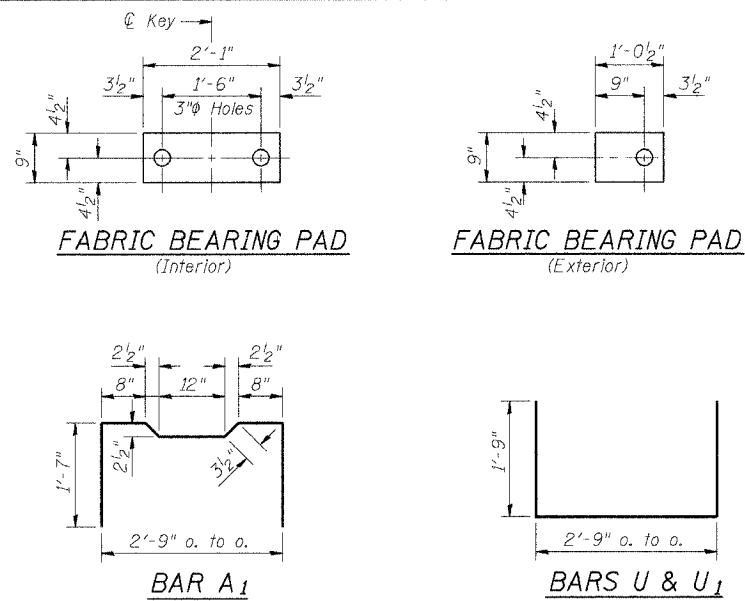


ROUTE	SECTION	COUNTY	TOTAL SHEETS	SHEET NO.
CH 5	03-00121-00-BR	MARION	11	8
FED. ROAD DIST. NO. 7	ILLINOIS	FED. AID PROJECT		

CONTRACT NO. 95401



BILL OF MATERIAL FOR ONE BEAM

Bar	No.	Size	Length	Shape
A	98	#3	2'-8"	—
A ₁	55	#4	6'-1"	⌒
B	4	#5	31'-0"	—
B ₁	8	#5	12'-0"	—
B ₂	6	#4	21'-6"	—
U	47	#3	6'-3"	⌒
U ₁	8	#4	6'-3"	⌒
Precast Prestressed Conc. Deck Bms.		Sq. Ft.	180	
Reinforcement Bars		Pound	780	
Total Weight Each Beam		Pound	35850	

SPAN 2

PRECAST PRESTRESSED CONCRETE DECK BEAM DETAILS
PROPOSED BRIDGE CARRYING CH 5 OVER EAST FORK KASKASKIA RIVER
SECTION 03-00121-00-BR
MARION COUNTY, ILLINOIS

Sheet 8 of 11
 Job No. 51103

NOTES

Prestressing steel shall be uncoated high strength, stress-relieved 7-wire strand, Grade 270.

The nominal diameter shall be 1/2" and the nominal cross-sectional area shall be 0.153 sq. in.

Lifting loops shall be 3 - 1/2" φ - 270 ksi strands, as shown.

The 1" rods in the transverse tie assembly shall be tightened to a snug fit and the threads set. Pockets that receive transverse tie bar on outside shall be filled with grout after transverse tie assembly is in place.

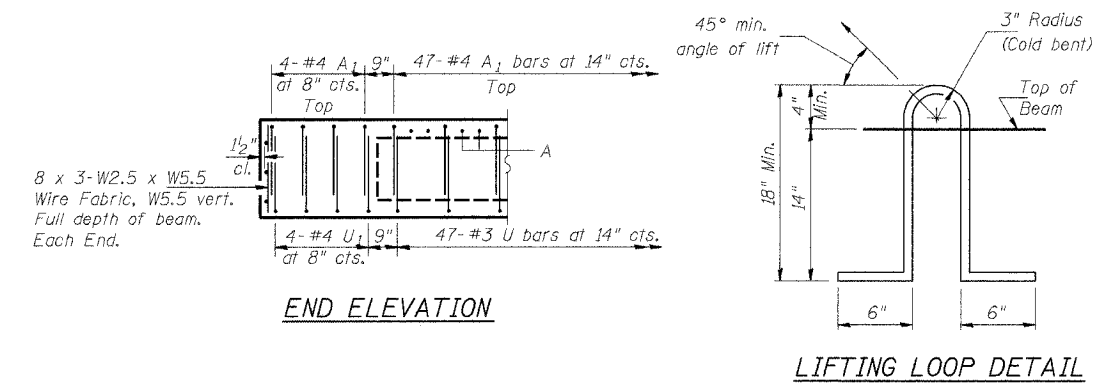
Reinforcement bars shall conform to the requirements of AASHTO M-31, M-42 or M-53 Grade 60.

The bearing seat surfaces shall be adjusted by shimming to assure firm and even bearing. Two 1/2" fabric adjusting shims of the dimensions of the Exterior Bearing Pad shall be provided for each bearing.

Keyway surfaces shall be cleaned to remove form oil or other bond breaking material prior to shipment of the beams. Cleaning shall be done by sandblasting the keyway areas between top of the beam and the bottom edge of the key.

Required Release Strength, f'ci, shall be 4000 p.s.i.

An equal substitution of the low-relaxation strands for the stress-relieved strands will be permitted. However, all strands shall be stressed to a maximum of 28,900 pounds per strand.



03/10/2004