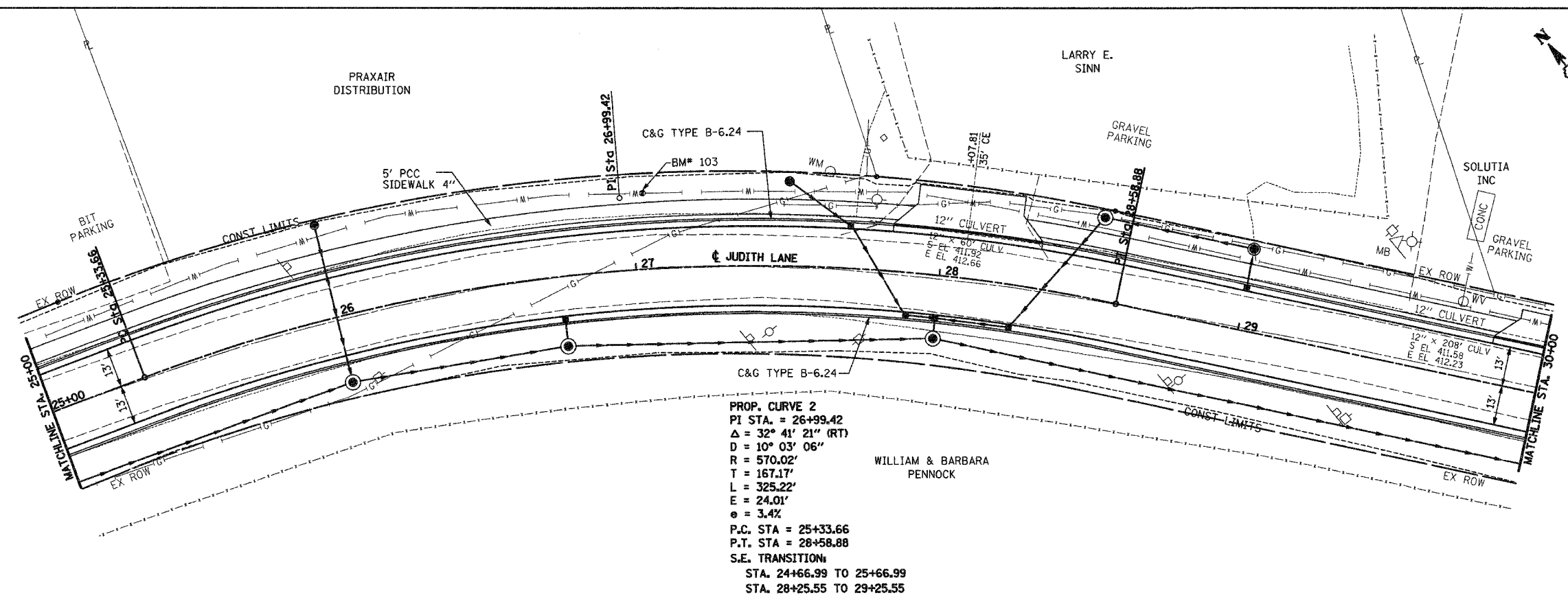


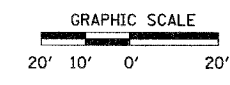
F.A.U. RTE.	SECTION	COUNTY	TOTAL SHEETS	SHEET NO.
9195	*	ST CLAIR	54	9
STA. 25+00		TO STA. 30+00		

* CITY SECTION #01-00039-00-FP
 COUNTY SECTION #03-00360-00-PV
 CONTRACT NO. 97235



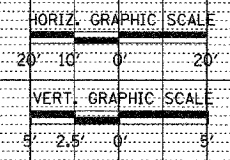
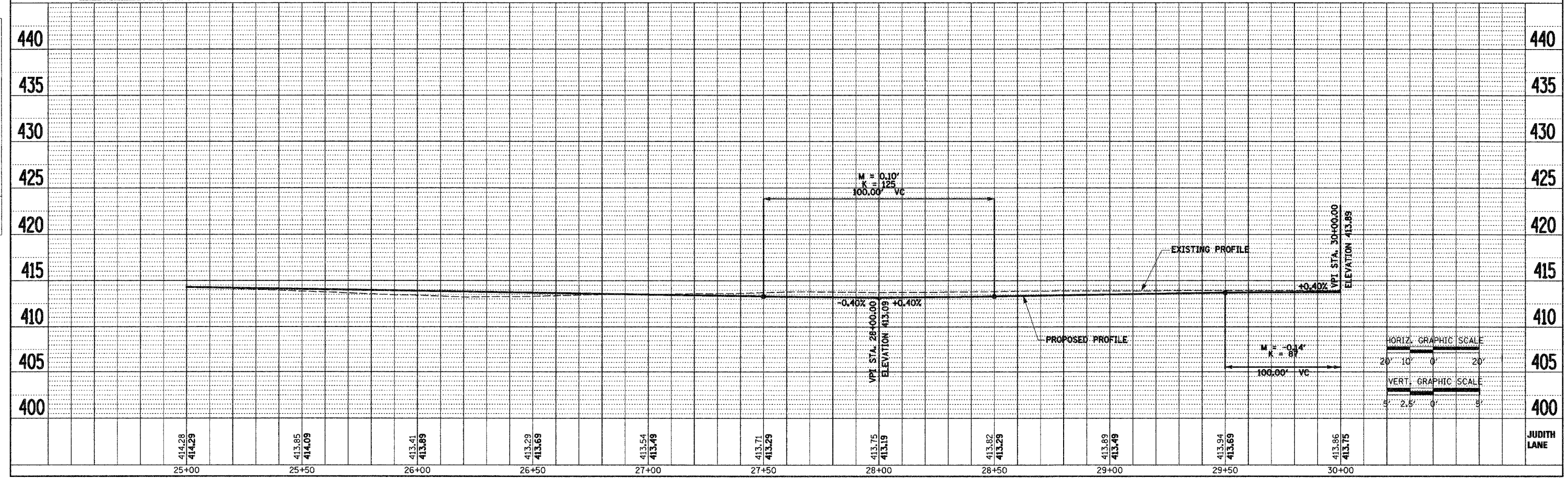
PROP. CURVE 2
 P.I. STA. = 26+99.42
 $\Delta = 32^\circ 41' 21''$ (RT)
 $D = 10^\circ 03' 06''$
 $R = 570.02'$
 $T = 167.17'$
 $L = 325.22'$
 $E = 24.01'$
 $e = 3.4\%$
 P.C. STA = 25+33.66
 P.T. STA = 28+58.88
 S.E. TRANSITION:
 STA. 24+66.99 TO 25+66.99
 STA. 28+25.55 TO 29+25.55

BM #103 STA 27+02.27, 25.11' LT.
 IRON PIN (SET) WITH LATHE
 EL. 413.65



DATE	
BY	
PLANNED	
DESIGNED	
CHECKED	
APPROVED	
NO.	

DATE	
BY	
PROFILING	
DESIGNED	
CHECKED	
APPROVED	
NO.	



20' 10' 0' 20'
 5' 2.5' 0' 5'