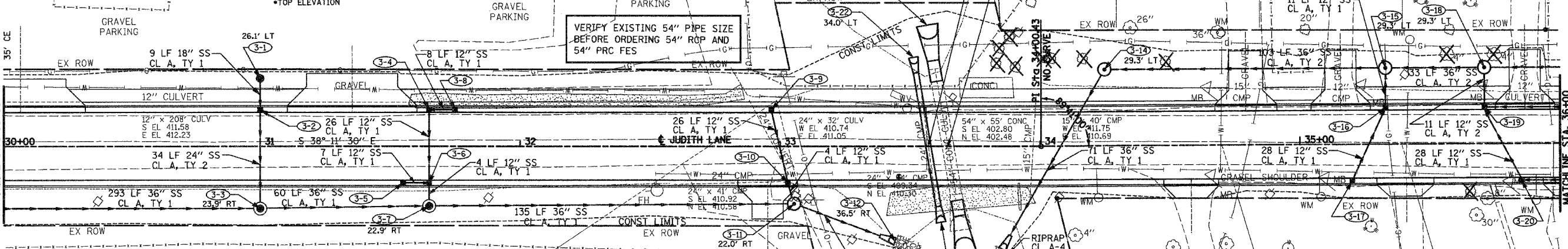


F.A.U. RTE.	SECTION	COUNTY	TOTAL SHEETS	SHEET NO.
9195		ST CLAIR	54	23
STA. 30+00		TO STA. 36+00		

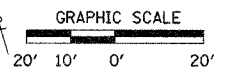
CITY SECTION #01-00039-00-FP
COUNTY SECTION #03-00360-00-PV
CONTRACT NO. 97235

STRUCTURE NO	3-1	3-2	3-3	3-4	3-5	3-6	3-7	3-8	3-9	3-10
STATION	31+00 LT	31+00 LT	31+00 RT	31+65 LT	31+55 RT	31+65 RT	31+65 RT	31+75 LT	32+97 LT	33+03 RT
TYPE	INLET B-8	INLET B-24	MH A-8 (5'Ø)	INLET B-3	INLET A-3	MH A-3(4'Ø)	MH A-8 (5'Ø)	INLET A-3	INLET A-24	INLET B-24
EOP EL	412.48*	412.88	411.18*	412.68	412.68	412.68	411.51*	412.70	413.39	413.43
INV EL N	---	---	405.93	409.50	---	409.49	405.87	409.62	---	---
INV EL S	---	---	405.93	---	409.60	---	405.87	---	---	---
INV EL E	408.74	407.15	407.01	---	---	409.37	408.43	---	---	410.18
INV EL W	408.85	407.15	---	409.50	---	408.53	---	---	410.31	409.34



STRUCTURE NO	3-11	3-12	3-13	3-14	3-15	3-16	3-17	3-18	3-19	3-20	3-21	3-22	3-23	3-24
STATION	33+05 RT	33+44 RT	33+85 RT	34+24 LT	35+33 LT	35+33 LT	35+26 RT	35+71 LT	35+71 LT	35+85 RT	33+62 RT	33+51 LT	33+71 RT	33+57 LT
TYPE	MH A-1 CL F&G (5'Ø)	36" EO PRC FES	36" PRC FES	MH A-1 CL F&G (5'Ø)	MH A-1 CL F&G (5'Ø)	INLET B-3	INLET A-3	MH A-1 CL F&G (5'Ø)	MH A-3 (4'Ø)	INLET B-3	24" PRC FES	24" PRC FES	54" PRC FES	54" PRC FES
EOP EL	413.25*	---	---	414.50*	414.35*	413.89	413.94	413.95*	413.70	413.63	---	---	---	---
INV EL N	405.74	402.38	---	---	404.65	---	---	404.68	---	---	---	---	---	---
INV EL S	402.55	---	---	404.54	404.65	---	---	404.68	410.09	409.93	---	---	---	---
INV EL E	409.24	---	404.51	---	---	410.71	410.88	---	409.80	409.93	---	409.60	---	402.90
INV EL W	---	---	---	404.54	410.59	410.71	---	409.69	409.80	---	---	---	---	---

BM #102 STA 33+44.26, 11.57' RT.
60 D SPIKE (SET) WITH LATHE
EL 413.29



PLAN
DATE
BY
SURVEYED
ALIGNED
CHECKED
NOTE BOOK
NO. OF PAGES CHECKED
NO. OF PAGES
NO.

PROFILE
DATE
BY
SURVEYED
ALIGNED
CHECKED
NOTE BOOK
NO. OF PAGES CHECKED
NO. OF PAGES
NO.

