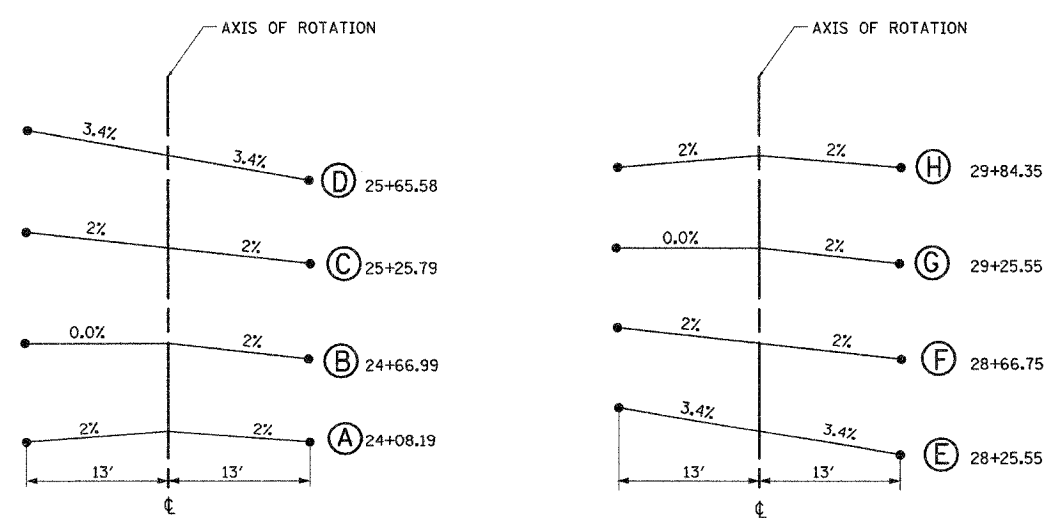
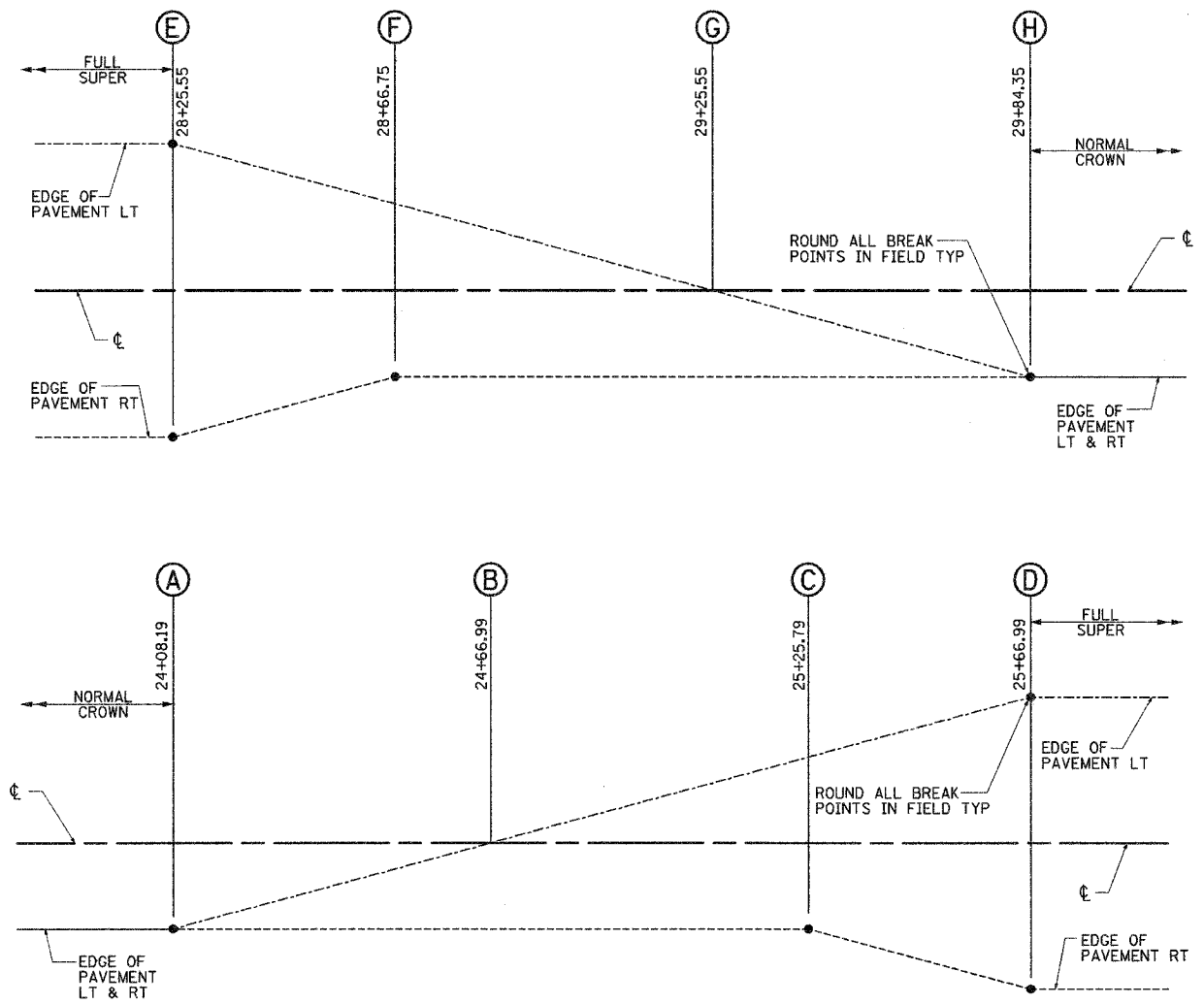
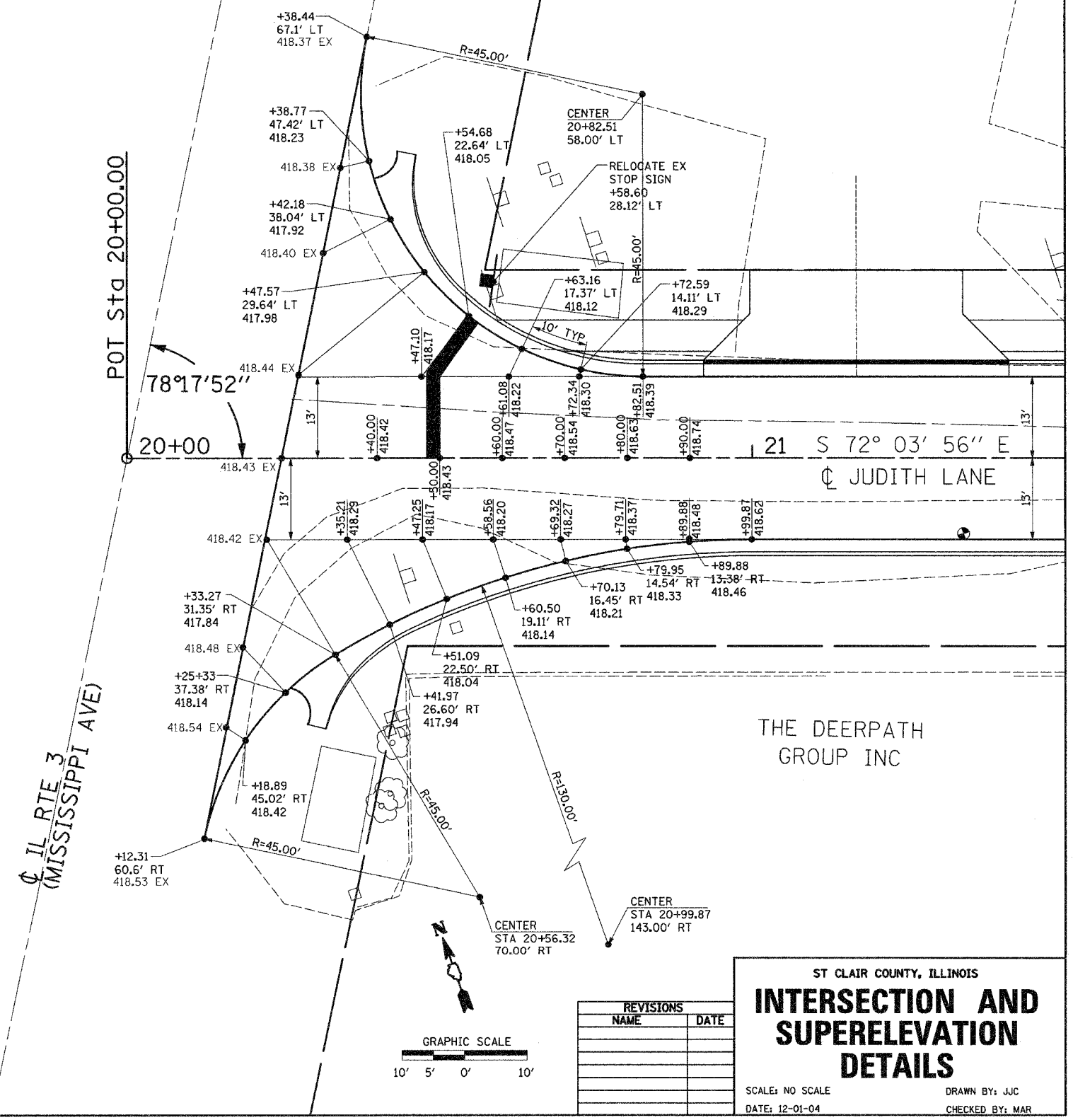


F.A.U. RTE.	SECTION	COUNTY	TOTAL SHEETS	SHEET NO.
9195	*	ST CLAIR	54	30
STA.		TO STA.		
* CITY SECTION #01-00039-00-FP COUNTY SECTION #03-00360-00-PV				



SUPERELEVATION TRANSITION



REVISIONS	
NAME	DATE

ST CLAIR COUNTY, ILLINOIS

INTERSECTION AND SUPERELEVATION DETAILS

SCALE: NO SCALE
DATE: 12-01-04

DRAWN BY: JJC
CHECKED BY: MAR

W:\PROJECTS\2012\12-01-04\2012-01-04-001.dwg 2/12/2012 8:36:59 AM