

F.A.P. RTE.	SECTION	COUNTY	TOTAL SHEETS	SHEET NO.
726	130 I-2, TS	WILLIAMSON	90	1

CONTRACT NO 98884

FOR INDEX OF SHEETS, SEE SHEET NO. 2
 FOR SUMMARY OF QUANTITIES, SEE SHEET NO. 3 & 4

STATE OF ILLINOIS
 DEPARTMENT OF TRANSPORTATION
 DIVISION OF HIGHWAYS

**PROPOSED
 HIGHWAY PLANS**

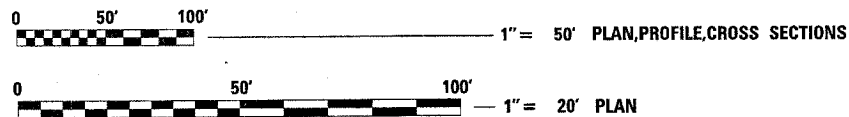
FAP ROUTE 726 (ILLINOIS 148)
 SECTION 130 I-2, TS
 FEDERAL PROJECT NO: HS-0726(053)
 INTERSECTION OF ILL 148 AND
 GRAND ROAD/MCCREE ROAD
 TRAFFIC SIGNALS
 WILLIAMSON COUNTY
 C-99-015-05

D-99-027-04



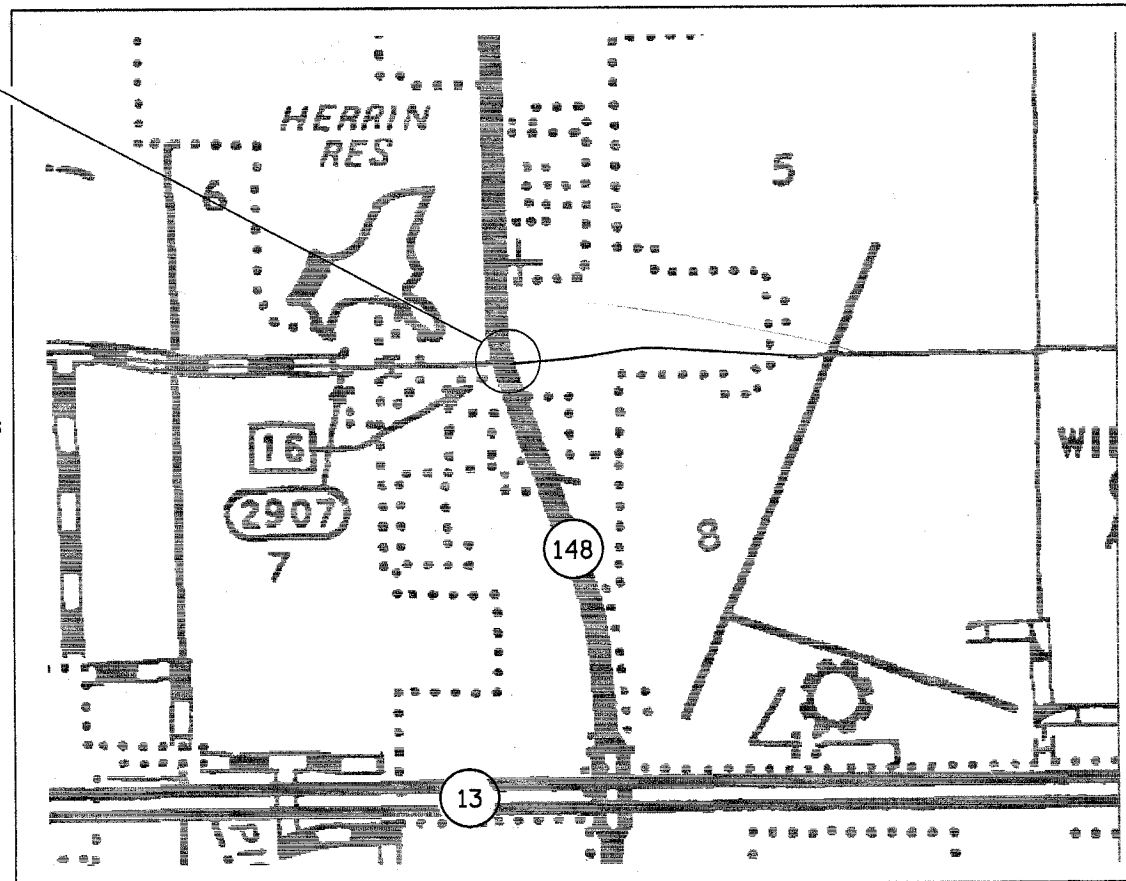
APPROACH	ADT (2003)	% TRUCKS
ILL 148 N OF GRAND ROAD	16,600	2%
MCCREE RD E OF ILL 148	150	0%
ILL 148 S OF GRAND ROAD	16,000	2%
GRAND ROAD W OF ILL 148	3,650	1%

PROJECT LOCATION
 BEGIN STATION - 112+37
 END STATION 119+00



FULL SIZE PLANS HAVE BEEN PREPARED USING STANDARD ENGINEERING SCALES. REDUCED SIZED PLANS WILL NOT CONFORM TO STANDARD SCALES. IN MAKING MEASUREMENTS ON REDUCED PLANS, THE ABOVE SCALES MAY BE USED.

J.U.L.I.E.
 JOINT UTILITY LOCATION INFORMATION FOR EXCAVATION
 1-800-892-0123 or www.julie1call.com



GROSS LENGTH OF PROJECT = 0.13 MILES
 NET LENGTH OF PROJECT = 0.13 MILES

STATE OF ILLINOIS
 DEPARTMENT OF TRANSPORTATION
 DIVISION OF HIGHWAYS

SUBMITTED Feb 17 20 05
Man Clami
 DEPUTY DIRECTOR OF HIGHWAYS, REGION ENGINEER

March 25, 20 05
Mike Hine
 ENGINEER OF DESIGN AND ENVIRONMENT

March 25, 20 05
Victor Maden
 DIRECTOR, DIVISION OF HIGHWAYS

**PRINTED BY THE AUTHORITY
 OF THE STATE OF ILLINOIS**

PROJECT ENGINEER: SUSAN POE
 SQUAD LEADER: SUSAN POE
 (618) 549-2171
 CENTREX 782-6554
 D902704/D902704MS.DGN

HERRIN TOWNSHIP
CONTRACT NO. 98884