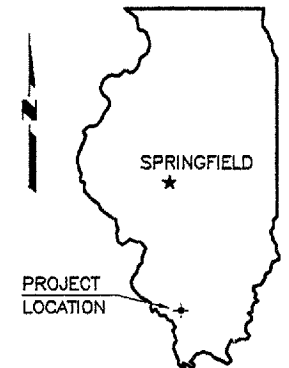


STATE OF ILLINOIS
DEPARTMENT OF TRANSPORTATION
PLANS FOR PROPOSED

ROUTE	SECTION	COUNTY	TOTAL SHEETS	SHEET NO.
C.H. 2	00-00130-00-BR	JACKSON	11	1
PROJECT NO. BROS-077(042)		CONTRACT NO. 99209		

BRIDGE REPLACEMENT AND REHABILITATION PROGRAM



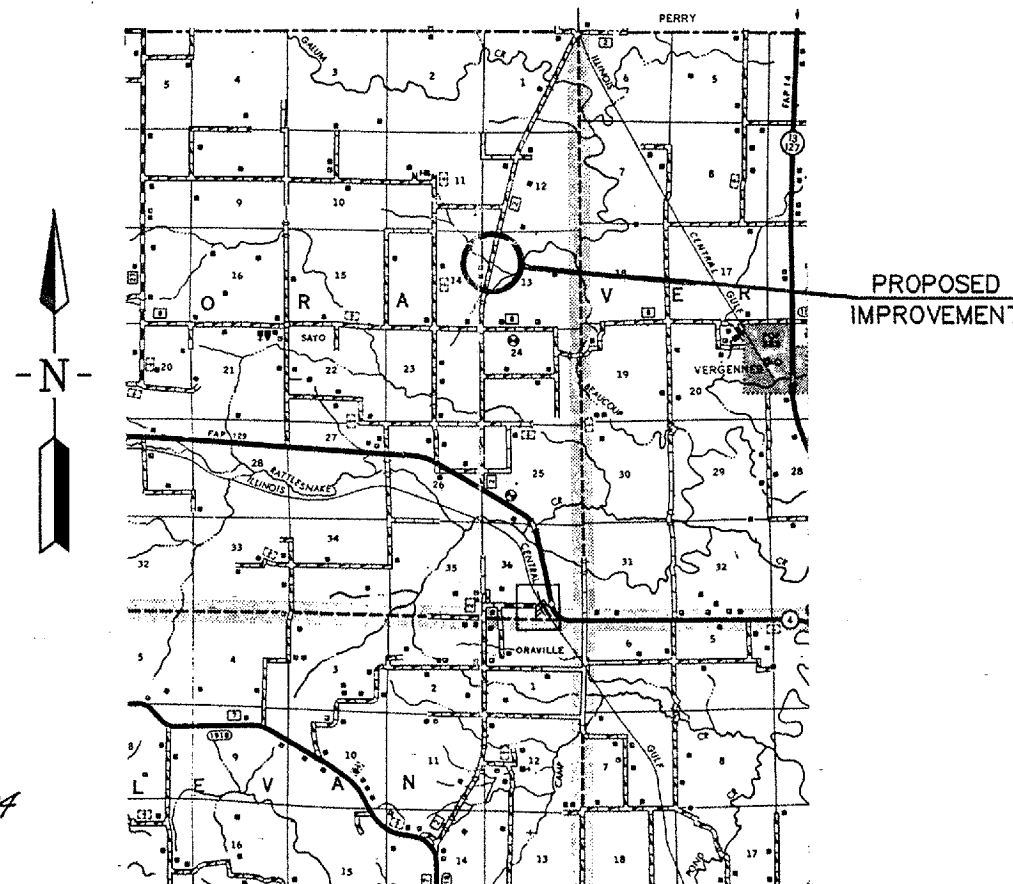
C.H. ROUTE 2
SECTION 00-00130-00-BR
PROJECT BROS-077(042)
JOB NO. C-99-521-03
PAUM CREEK

SUMMARY OF QUANTITIES

CODE NO.	PAY ITEM	UNIT	TOTAL
LR631020	TRAFFIC BARRIER TERMINAL, TYPE 1	EACH	2
20100500	TREE REMOVAL, ACRES	ACRE	0.2
20200100	EARTH EXCAVATION	CU YD	606
20300100*	CHANNEL EXCAVATION	CU YD	75
25000200	SEEDING, CLASS 2	ACRE	0.4
25000400	NITROGEN FERTILIZER NUTRIENT	POUND	36
25000500	PHOSPHORUS FERTILIZER NUTRIENT	POUND	36
25000600	POTASSIUM FERTILIZER NUTRIENT	POUND	36
25000700	AGRICULTURAL GROUND LIMESTONE	TON	1
25100120	MULCH, METHOD 2	TON	1
28100807*	STONE DUMPED RIPRAP, CLASS A4	TON	122
40200800*	AGGREGATE SURFACE COURSE, TYPE B	TON	485
50100100*	REMOVAL OF EXISTING STRUCTURES	EACH	1
50200100	STRUCTURE EXCAVATION	CU YD	81
50300225	CONCRETE STRUCTURES	CU YD	16.6
50400305	PRECAST PRESTRESSED CONCRETE DECK BEAMS (17" DEPTH)	SQ FT	960
50800105	REINFORCEMENT BARS	POUND	1,720
50900205	STEEL RAILING, TYPE S1	FOOT	80
51201400	FURNISHING STEEL PILES HP10X42	FOOT	352
51202700	DRIVING STEEL PILES	FOOT	352
51204315	CONCRETE ENCASMENT	CU YD	2.1
51500100	NAME PLATES	EACH	1
63000000	STEEL PLATE BEAM GUARD RAIL, TYPE A	FOOT	175
63100075	TRAFFIC BARRIER TERMINAL, TYPE 5A	EACH	2
78200410*	GUARDRAIL MARKERS, TYPE A	EACH	8
78201000*	TERMINAL MARKER - DIRECT APPLIED	EACH	4

* SEE SPECIAL PROVISIONS

JACKSON COUNTY



LOCATION MAP

SCALE: 1" = 2 MILES

NET LENGTH OF IMPROVEMENT = 500.00 FT. = 0.0947 MILES

INDEX OF SHEETS

- COVER SHEET
 - PLAN & PROFILE
 - GENERAL PLAN & ELEVATION
 - SUPERSTRUCTURE
 - DECK BEAMS - 17" X 36"
 - DECK BEAMS - 17" X 48"
 - ABUTMENTS
 - STEEL RAILING
 - NAME PLATE
 - PILE DETAILS
 - CROSS SECTIONS
- STANDARDS
- 280001-02 TEMPORARY EROSION CONTROL
 - 631026-02 TRAFFIC BARRIER TERMINAL TYPE 5 & 5A
 - 635006-02 REFLECTOR & TERMINAL MARKER PLACEMENT
 - 635011-01 REFLECTOR MARKER AND MOUNTING DETAILS
 - 702001-05 TRAFFIC CONTROL DEVICES
 - BLR 21-6 TRAFFIC CONTROL
 - BLR 23-1 TRAFFIC BARRIER TERMINAL TYPE 1

CLASSIFICATION : LOCAL ROAD (RURAL)
ADT : 275
DESIGN SPEED : 40 MPH

JOINT UTILITY LOCATION INFORMATION FOR EXCAVATION
J.U.L.I.E. 1-800-892-0123
CONTACT 48 HOURS BEFORE EXCAVATING



07-26-04

Edward W. Miller

Edward W. Miller
PROFESSIONAL ENGINEER
#062-025277
EXPIRES NOV. 30, 2005

CONTRACT NO. 99209
E. MILLER ENGINEERING, INC.
CONSULTING ENGINEERS
HARRISBURG, ILLINOIS

STATE OF ILLINOIS
DEPARTMENT OF TRANSPORTATION

APPROVED *[Signature]* 9/14, 20 04
LOCAL AGENCY REPRESENTATIVE

PASSED *[Signature]* February 24, 20 05
DISTRICT ENGINEER OF LOCAL ROADS & STREETS

APPROVED *[Signature]* Feb 25, 20 05
MARY C. LAMIE, P.E.
DEPUTY DIRECTOR OF HIGHWAYS, REGION FIVE ENGINEER