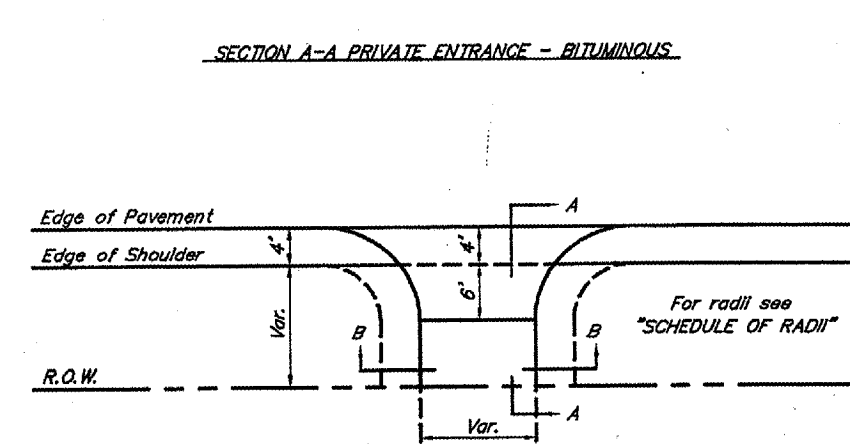
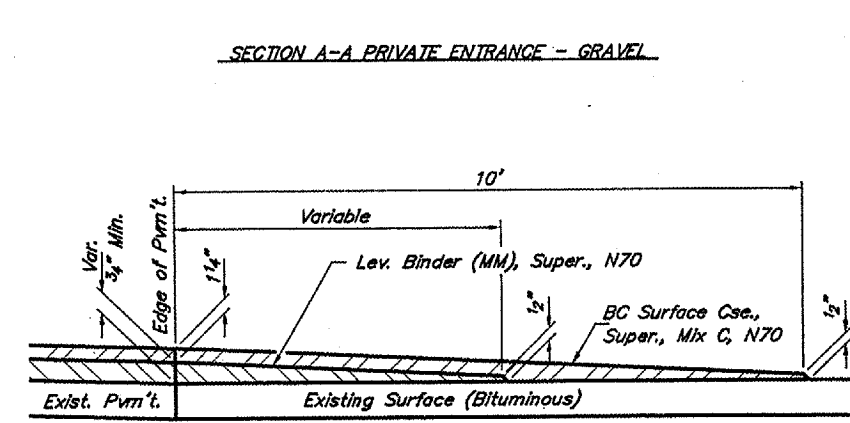
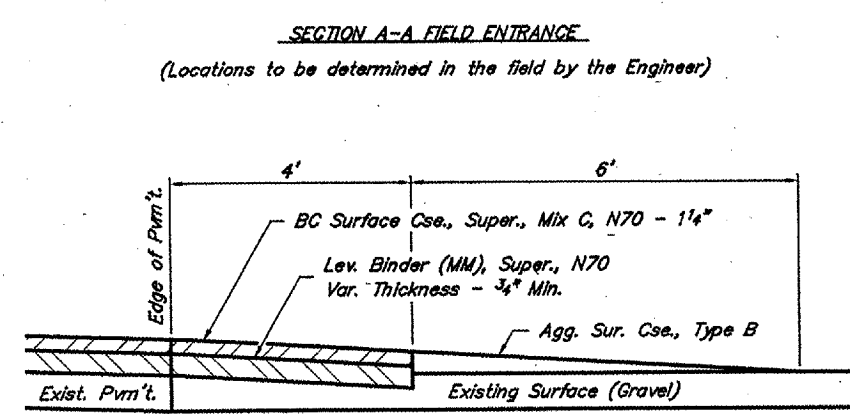
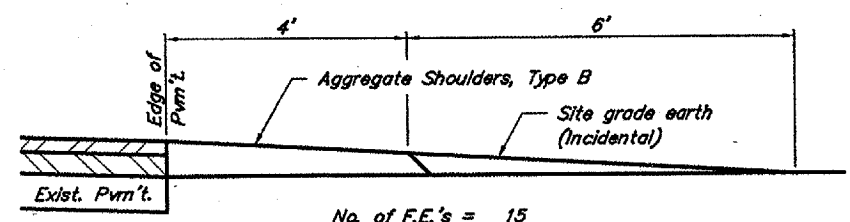


ROUTE	SECTION	COUNTY	TOTAL SHEETS	SHEET NO.
FAS 931	02-00058-00-RS	JOHNSON	4	3
PROJECT NO. RS-931 (109)		CONTRACT NO. 99211		

Location	Width	Binder Tons	Surface Tons	Agg. Tons
Sta. 189+20 Lt. B	10'	0.8	1.4	-
Sta. 189+57 Lt. B	10'	0.8	1.4	-
Sta. 213+85 Rt. G	12'	5.7	0.9	3.3
Sta. 213+87 Lt. G	13'	0.8	0.9	0.8
Sta. 218+04 Lt. G	12'	1.1	0.9	1.0
Sta. 218+44 Rt. G	10'	1.0	0.8	0.9
Sta. 223+17 Rt. G	18'	2.6	1.1	2.0
Sta. 229+58 Rt. G	15'	2.0	1.0	1.5
Sta. 233+85 Lt. G	12'	6.8	0.9	3.8
Sta. 254+84 Lt. G	15'	1.6	1.0	1.3
Sta. 263+00 Rt. G	14'	1.9	1.0	1.5
Sta. 266+11 Rt. G	25'	1.6	1.3	1.7
Sta. 266+54 Lt. G	12'	1.1	0.9	1.0
Sta. 267+17 Lt. G	10'	1.0	0.8	0.9
Sta. 269+50 Lt. G	10'	1.0	0.8	0.9
Sta. 269+95 Rt. G	22'	1.5	1.2	1.5
Sta. 276+94 Lt. G	10'	2.0	0.8	1.3
Sta. 277+53 Rt. G	10'	1.0	0.8	0.9
Sta. 293+85 Lt. G	22'	1.5	1.2	1.5
Sta. 307+50 Lt. G	14'	1.1	1.0	1.1
Sta. 315+82 Lt. G	10'	1.0	0.8	0.9
Sta. 317+20 Lt. G	10'	1.0	0.8	0.9
Sta. 327+15 Rt. G	16'	2.5	1.0	1.8
Sta. 347+97 Rt. G	12'	0.7	0.9	0.8
Sta. 348+42 Lt. G	10'	3.0	0.8	1.8
Sta. 348+77 Rt. G	10'	1.0	0.8	0.9
Sta. 350+05 Rt. G	10'	1.4	0.8	1.0
Sta. 351+70 Rt. G	10'	0.7	0.8	0.7
Sta. 354+38 Rt. G	10'	1.4	0.8	1.0
Sta. 355+18 Rt. G	18'	3.0	1.1	2.2
Sta. 355+25 Lt. G	18'	1.3	1.1	1.3
Sta. 357+87 Lt. G	20'	0.9	1.2	1.1
Sta. 358+16 Rt. G	20'	1.8	1.2	1.6
Sta. 360+15 Lt. G	18'	0.9	1.1	1.1
Sta. 362+05 Rt. G	14'	0.7	1.0	0.9
Sta. 362+69 Rt. G	10'	0.7	0.8	0.7
Sta. 363+20 Rt. G	10'	0.7	0.8	0.7
Sta. 364+58 Rt. G	42'	1.4	1.9	2.1
Sta. 366+03 Rt. G	14'	0.7	1.0	0.9
Sta. 368+66 Rt. G	10'	1.4	0.8	1.0
Sta. 370+17 Rt. G	12'	1.4	0.9	1.2
Totals		64.5	40.5	51.5

B = Bituminous Surface
G = Gravel Surface

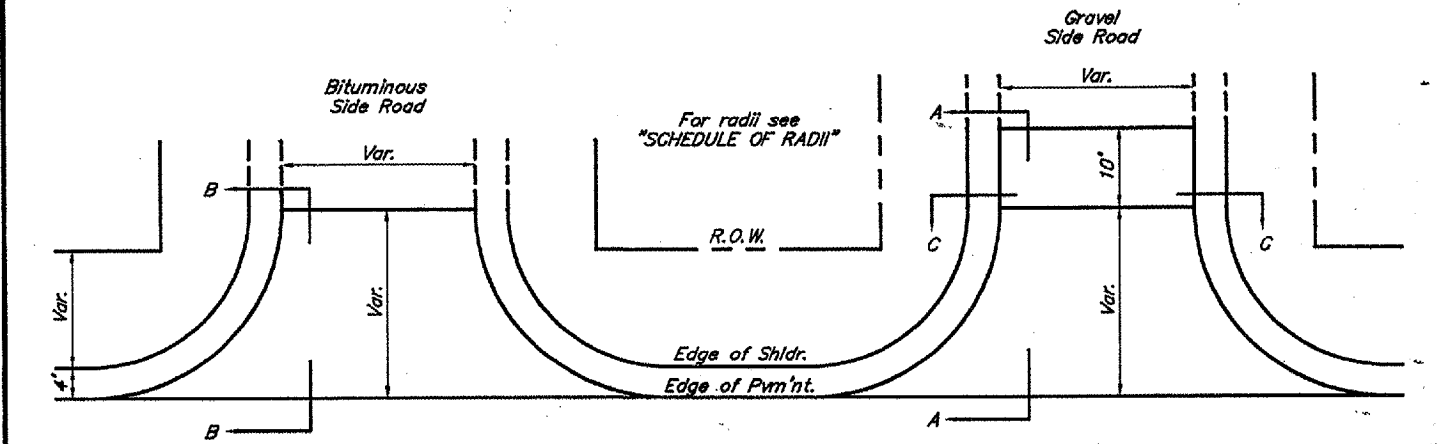
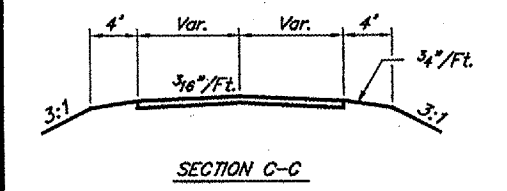
NOTE: Where bituminous material is to be placed, the existing surface shall be primed with Bituminous Mat's (Pr. Ct.) at 0.10 gal./s.y. and Aggregate (Pr. Ct.) at 3 lbs./s.y.



Location	Width	Binder Tons	Surface Tons	Agg. Tons
Sta. 223+23 Lt. G	18'	4.6	5.8	2.3
Sta. 250+47 Lt. G	16'	6.4	5.4	2.0
Sta. 250+65 Rt. G	16'	6.4	5.4	2.0
Sta. 264+53 Lt. G	19'	9.5	6.0	2.4
Sta. 264+53 Rt. G	21'	7.6	6.4	2.7
Sta. 345+00 Lt. G	16'	29.9	9.3	3.5
Sta. 352+94 Lt. G	16'	8.5	5.4	2.0
Sta. 353+04 Rt. B	16'	2.5	4.6	-
Sta. 355+76 Rt. G	18'	25.3	5.8	2.3
Sta. 355+83 Rt. B	18'	13.0	5.4	-
Sta. 359+10 Lt. G	18'	4.6	5.8	2.3
Sta. 359+13 Lt. B	22'	1.6	5.3	-
Sta. 361+67 Rt. B	18'	1.3	4.8	-
Totals		121.2	75.4	21.5

B = Bituminous Surface
G = Gravel Surface

NOTE: Where bituminous material is to be placed, the existing surface shall be primed with Bituminous Mat's (Pr. Ct.) at 0.10 gal./s.y. and Aggregate (Pr. Ct.) at 3 lbs./s.y.



Angle of Intersection	Side Road		Private Entrance	
	Acute L.	Obtuse L.	Acute L.	Obtuse L.
90° - 80°	25'	25'	15'	15'
79° - 70°	25'	40'	15'	25'
69° - 60°	25'	60'	15'	35'
59° - 50°	20'	75'	10'	40'
49° - 40°	20'	100'	10'	60'
39° - 30°	15'	150'	10'	100'

TYPICAL SIDE ROAD AND ENTRANCE DETAILS
FAS ROUTE 931
SECTION 02-00058-00-RS
PROJECT NO. RS-931 (109)
JOHNSON COUNTY