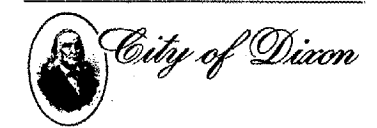


STORM SEWER SCHEDULE



815 Commerce Drive Suite 200
Oak Brook, Illinois 60523
Telephone: 630.990.3800
Fax: 630.990.3801



CITY OF DIXON, ILLINOIS
Post Office Box 388
Dixon, Illinois 61021
Telephone: 815.288.1485

**DIXON MUNICIPAL AIRPORT
CHARLES R. WALGREEN FIELD**

**OVERLAY TAXIWAYS B, D AND E;
REHABILITATE FRONTAGE APRON
PAVEMENT**

**AIP PROJECT NO. 3-17-0036-B7
IDA PROJECT NO. C73-3436**

DRAINAGE STRUCTURE DATA

STRUCTURE NUMBER	STRUCTURE TYPE	INSIDE DIA. 'D' (IN)	WALL THICKNESS 'T' (IN)	TOP THICKNESS '1' (IN)	BOTTOM THICKNESS 'B' (IN)	FRAME HEIGHT 'X' (IN)	HOLE OPENING 'L' (IN)	FRAME TYPE (EAST JORDAN)	COVER/GRATE (EAST JORDAN)
K8	MH	72	6	8	8	8.5	36	1585	TYPE M
K9	MH	60	5	8	8	9	24	1050	TYPE A "STORM"
K10	MH	60	5	8	8	9	24	1050	TYPE A "STORM"
K11	MH	48	5	6	6	9	24	1050	TYPE A "STORM"

NOTES

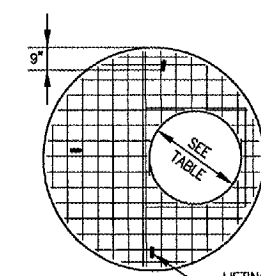
- FOR STRUCTURE LOCATIONS SEE STORM SEWER SCHEDULE.
- FRAME AND GRATE, ADJUSTING RINGS OR RISER SHALL BE MORTARED.
- ALL MANHOLE STRUCTURES TO BE PRECAST.

STRUCTURE DATA							PIPE DATA		
STRUCTURE	STATION	OFFSET (FT.)	TYPE	DIAMETER (IN)	RIM ELEV.	INVERT ELEV.	PAY LENGTH (FT.)	SIZE	SLOPE (%)
K4	900+00	0.00	LT Existing Manhole	84	774.31	E 769.08	92.5	30	0.75
K8	900+95.59	15.69	LT Manhole	72	775.08	W 769.78 N 771.13 E 770.78	101.0	18	0.75
K9	901+97.40	32.41	LT Manhole	60	778.22	W 771.54 N 771.79 E 771.79	99.0	15	0.66
K10	902+98.79	32.41	LT Manhole	60	779.28	W 772.45 N 772.65 E 772.65	104.0	12	0.75
K11	904+05.46	32.41	LT Manhole	48	780.28	W 773.43 N 773.63	8.0	12	0.75
K8	900+95.59	15.69	LT Existing Manhole	84	775.08	N 771.13	69.0	15	0.75
K8-A	900+95.59	88.02	LT RCP	---	---	S 771.65			
K9	901+97.40	32.41	LT Manhole	60	778.22	N 771.79	53.5	15	0.50
K9-A	901+97.40	88.34	LT RCP	---	---	S 772.06			
K10	902+98.79	32.41	LT Existing Manhole	60	779.28	N 772.65	53.5	15	0.74
K10-A	902+98.79	88.19	LT RCP	---	---	S 773.05			
K11	904+05.46	32.41	LT Manhole	60	780.28	N 773.63			
K11-A	904+05.56	42.31	LT RCP	---	---	S 773.69			

NOTE:
STRUCTURES K8-A, K9-A, K10-A AND K11-A ARE TEMPORARY PIPE ENDS TO BE PLUGGED, SEE DETAIL THIS SHEET. COST IS INCIDENTAL TO PIPE.

NOTES:

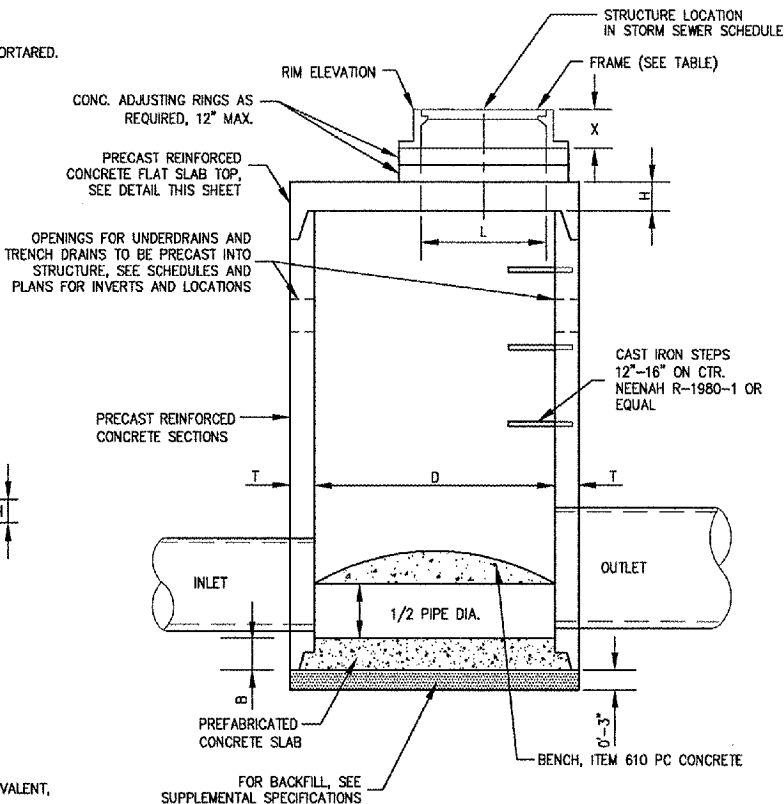
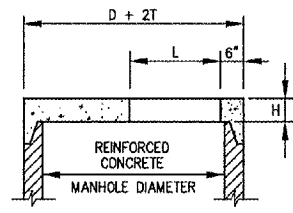
- SEE SUPPLEMENTAL SPECIFICATIONS AND SPECIAL PROVISIONS FOR PIPE MATERIAL SPECIFICATIONS.
- SEE DETAILS AND SUPPLEMENTAL SPECIFICATIONS AND SPECIAL PROVISIONS FOR TRENCH BACKFILL AND COMPACTION REQUIREMENTS.
- STATIONS AND OFFSETS ARE GIVEN TO THE CENTER OF MANHOLES.
- ADJUSTING RINGS: 12" MAXIMUM, NO MORE THAN 3 RINGS ALLOWED.
- SEE DETAILS FOR ADDITIONAL STRUCTURE INFORMATION.
- REFER TO DRAINAGE STRUCTURE DATA TABLE FOR FRAME AND LD INFORMATION.



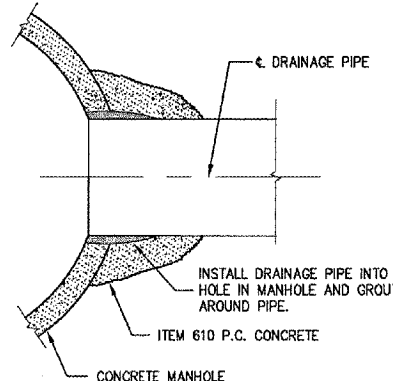
NOTES

- ADDITIONAL TOP AND BOTTOM BARS PLACED ADJACENT TO ACCESS HOLE.
- MINIMUM 1" COVER ON STEEL BARS.
- THREE LIFTING LOOPS OR HOLES.
- MINIMUM STEEL REINFORCEMENT IN EACH DIRECTION TO BE WWF 1.06 SQ. IN./FT OR EQUIVALENT, IN ACCORDANCE WITH AASHTO M 199 AND IDOT STANDARDS.

PRECAST REINFORCED CONCRETE FLAT SLAB TOP
(IDOT STANDARD 602601)



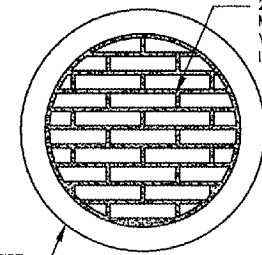
MANHOLE WITH FLAT SLAB TOP
(IDOT STANDARDS 602406-MODIFIED)



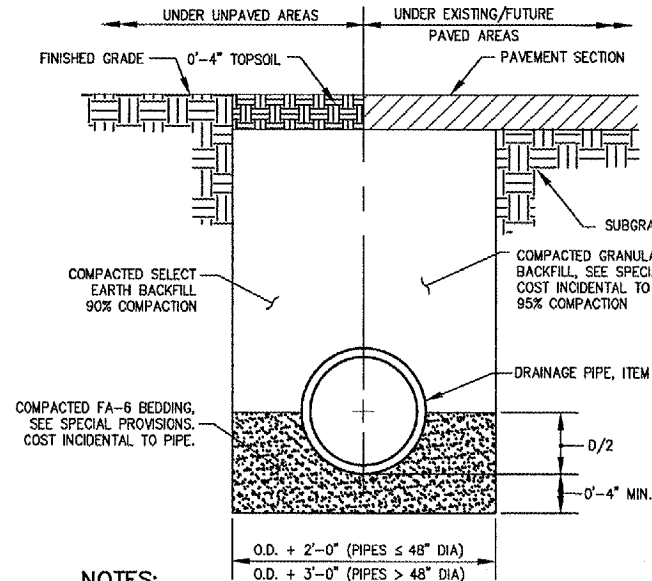
NOTES:

- HOLE FOR DRAINAGE PIPE TO BE PRECAST INTO MANHOLES AT PROPER INVERT.
- HOLE AT EXISTING MANHOLE K4 TO BE CORED. COST OF CORING IS INCIDENTAL.

DRAINAGE PIPE CONCRETE COLLAR AND GROUT CONNECTION



PIPE PLUG



NOTES:

- UNSATURABLE MATERIAL ENCOUNTERED DURING PLACEMENT OF BEDDING SHALL BE REMOVED AND REPLACED.
- WITHIN 3 FEET OF EXISTING AND FUTURE PAVED AREA, GRANULAR BACKFILL IS TO BE USED INSTEAD OF EARTH BACKFILL.

PIPE TRENCH

DETAILS SHOWN ARE NOT TO SCALE

No.	Drawing Issue Description	Date	By

Date: 11 MARCH 2005
Sheet Title: STORM SEWER SCHEDULE AND DETAILS

STORM SEWER SCHEDULE AND DETAILS

843-0488007
Project Number
KLK 02/03/05
Layout By Date
KLK, TMM 02/03/05
Designed By Date
RMH 03/11/05
Reviewed By Date
KLK
Drawn By
Sheet No.

I:\04\005\006A\3\0488007\DRAWINGS\0488007\STORM SEWER SCHEDULE.DWG MAR 22, 2005 10:06AM KLY