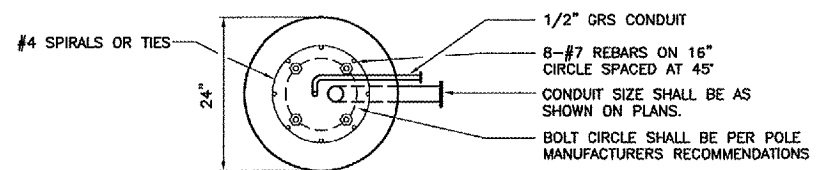
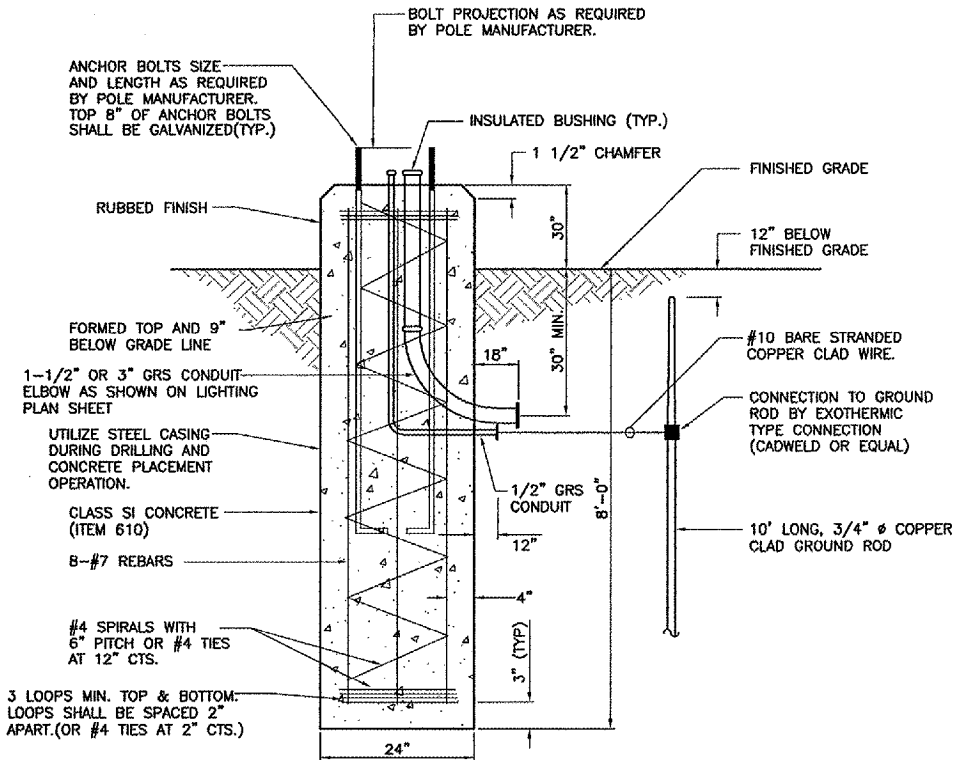


REVISIONS

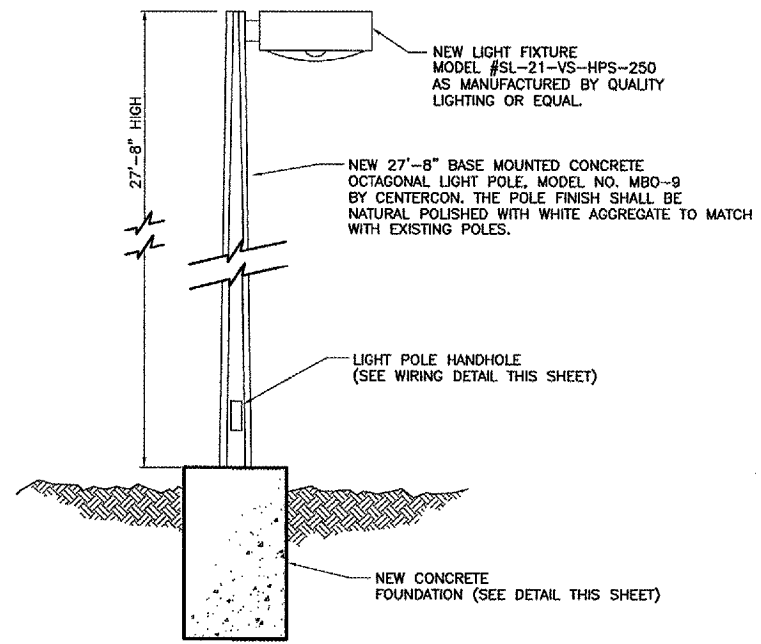
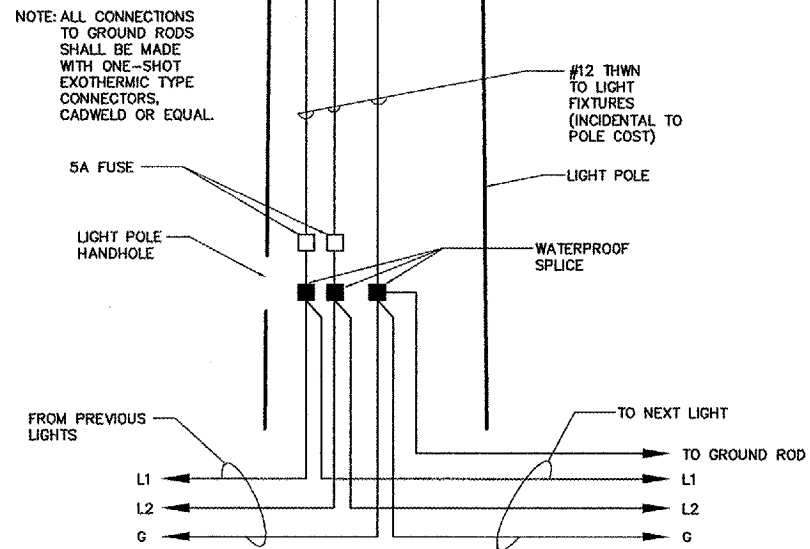
NUMBER	BY	DATE

0 1 2
 THIS BAR IS EQUAL TO 2"
 AT FULL SCALE (3/4X22).



LIGHT POLE FOUNDATION DETAIL
 NOT TO SCALE

*CONTRACTOR TO VERIFY FINISHED GRADE WITH ENGINEER



LANSING MUNICIPAL AIRPORT
 LANSING, ILLINOIS

NORTH QUADRANT SITEWORK - PHASE 1
 AND TAXIWAY G2 EXTENSION

ELECTRICAL DETAILS - SHEET 4

© copyright G.M.T., Inc.
G.M.T.
 CRAWFORD, MURPHY & TULLY, INC.
 CONSULTING ENGINEERS
 License No. 194-000613

Lansing Municipal
airport

DESIGN BY:	DKP
DRAWN BY:	JRO
CHECKED BY:	ARM
APPROVED BY:	
DATE:	03/04/05
JOB No:	03297-02
IL PROJECT:	10Q-3329
A.I.P. PROJECT:	3-17-0121-B21
SHEET	25 OF 50 SHEETS