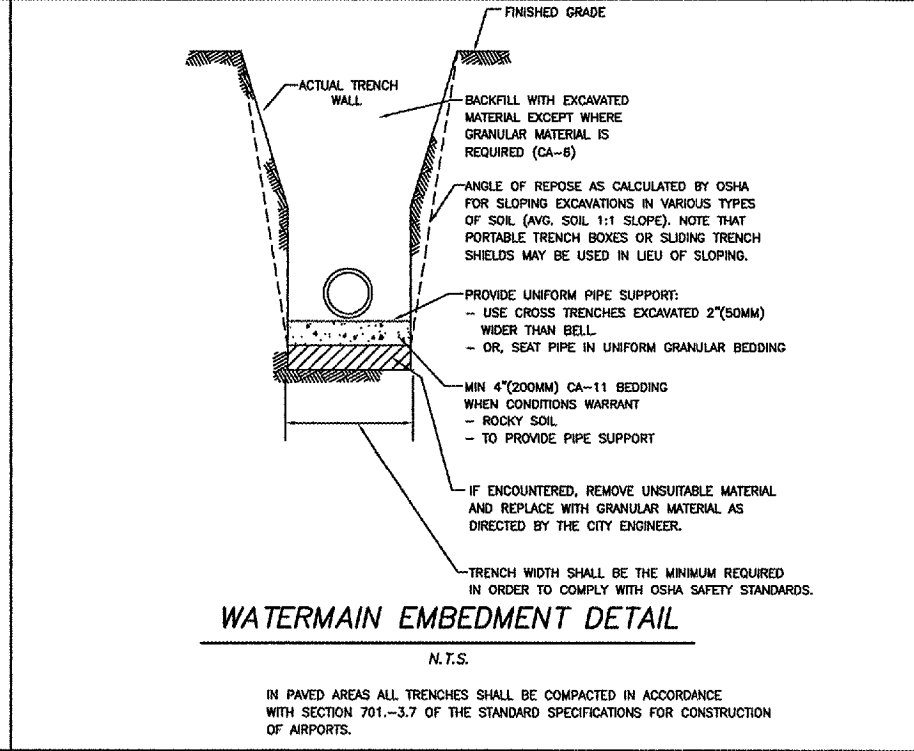


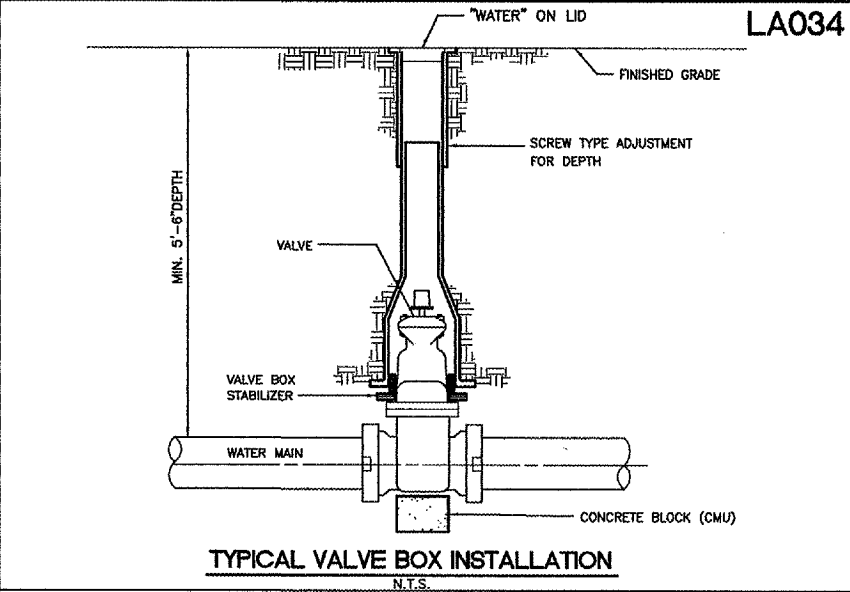
**FIRE HYDRANT DETAIL**  
N.T.S.

- NOTES:**
1. ALL HYDRANTS SHALL BE 6" WITH TWO 2 1/2" HOSE NOZZLES AND ONE PUMPER NOZZLE NATIONAL STANDARD THREADING. IT SHALL HAVE SAFETY STEM COUPLINGS AND SAFETY FLANGE. IT SHALL OPEN COUNTERCLOCKWISE AND SHALL BE FURNISHED WITH A MECHANICAL JOINT INLET.
  2. ALL HYDRANTS SHALL BE SPECIFIED TO HAVE GATE VALVE AND BOX ALONG THE CONNECTION TO WATERMAIN.
  3. DISTANCE BEHIND CURBS: 3' MIN., 7' MAX.



**WATERMAIN EMBEDMENT DETAIL**  
N.T.S.

IN PAVED AREAS ALL TRENCHES SHALL BE COMPACTED IN ACCORDANCE WITH SECTION 701.-3.7 OF THE STANDARD SPECIFICATIONS FOR CONSTRUCTION OF AIRPORTS.



**TYPICAL VALVE BOX INSTALLATION**  
N.T.S.

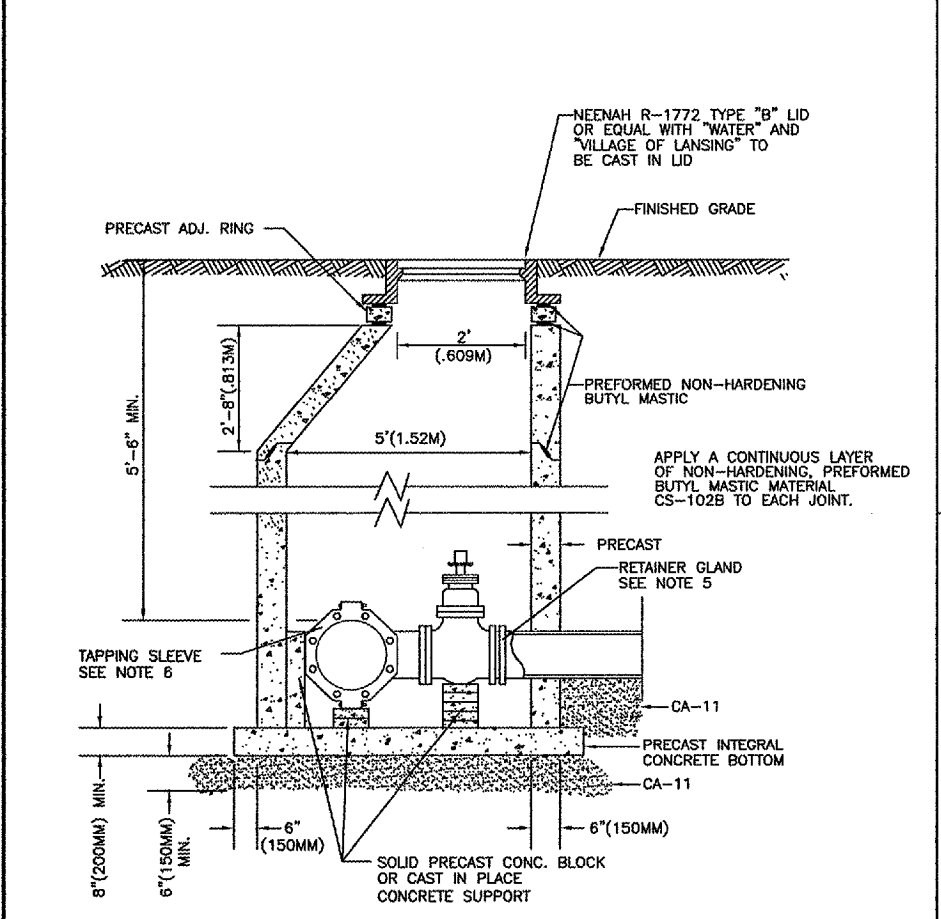
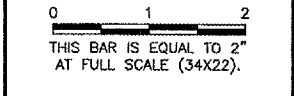
IN CULTIVATED AREAS AND AREAS DESIGNATED IN PLANS, SPECIFICATIONS OR BY ENGINEER, TOPSOIL SHALL BE STRIPPED AND STOCKPILED SEPARATELY. STRIPPING THICKNESS SHALL BE 12" IN CULTIVATED AREAS AND 4" IN TURFED AND WOODED AREAS UNLESS SPECIFIED OTHERWISE. BACKFILL SHALL BE LEFT SLIGHTLY MOUNDED.

TRENCH BACKFILL SHALL BE NATIVE EXCAVATED MATERIAL FREE OF LARGE DEBRIS EXCEPT WHERE THE PLANS, SPECIFICATIONS OR ENGINEER REQUIRE SELECTED GRANULAR BACKFILL.

LA034

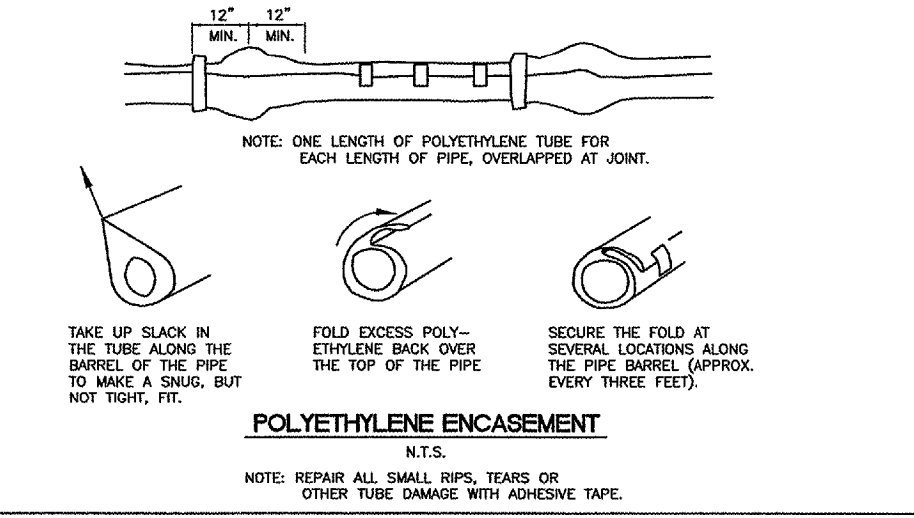
PATH: K:\0329702\sheets\  
FILE: waterdt.dwg  
UPDATE BY: johse  
SURVEY BOOK #  
XREF DWG:  
DATE: Fri 3/26/04 2:56pm

REVISIONS		
NUMBER	BY	DATE



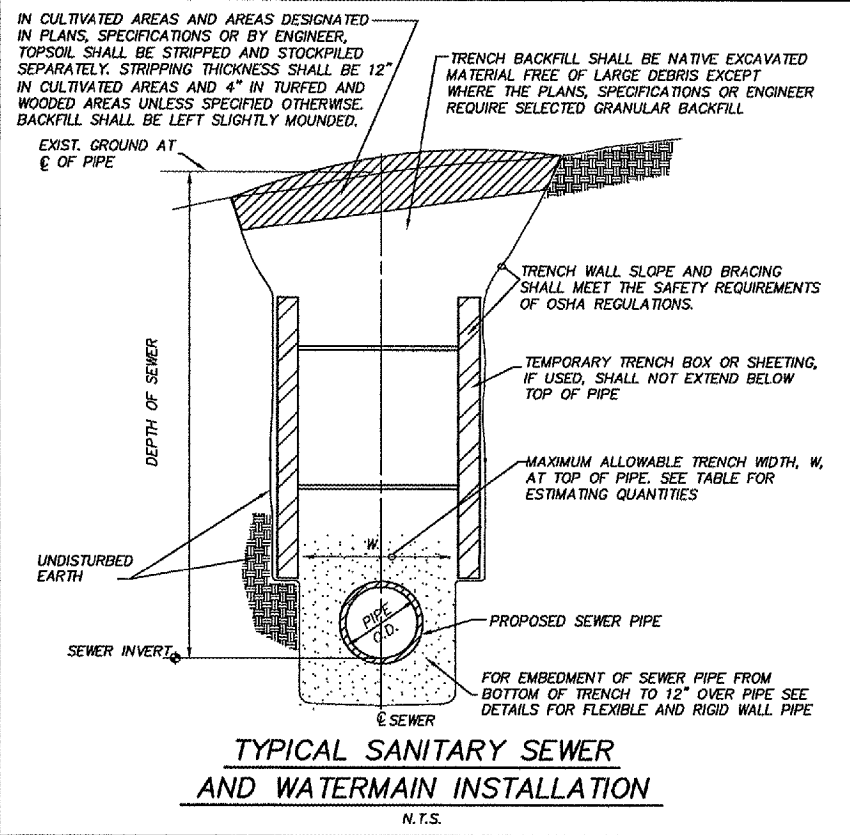
**TAPPING VALVE AND VAULT**  
N.T.S.

- 1) NO MORE THAN 12"(300MM) OF ADJUSTING RINGS MAY BE USED; HOWEVER NO MORE THAN ONE 2"(50MM) ADJUSTING RING OR TWO RINGS IN TOTAL MAY BE USED.
- 2) VALVE SHALL ALIGN WITH THE CENTER OF VAULT OPENINGS.
- 3) CONES SHALL BE ECCENTRIC.
- 4) WHEN ADJUSTMENTS ARE NECESSARY, THEY WILL BE PERFORMED WITH A MAXIMUM OF TWO (2) PRECAST CONCRETE RINGS SET IN A BED OF PREFORMED NON-HARDENING MASTIC (CS-102B OR APPROVED EQUAL) TO A MAXIMUM HEIGHT OF 12"(300MM). (ONE 2"(50MM) RING MAX.)
- 5) TYLER OR MUELLER CLASS 350 MECHANICAL JOINT WITH MEGALUGS OR EQUAL.
- 6) TAPPING SLEEVES SHALL BE HEAVY-DUTY STAINLESS STEEL BY MUELLER OR EQUAL.

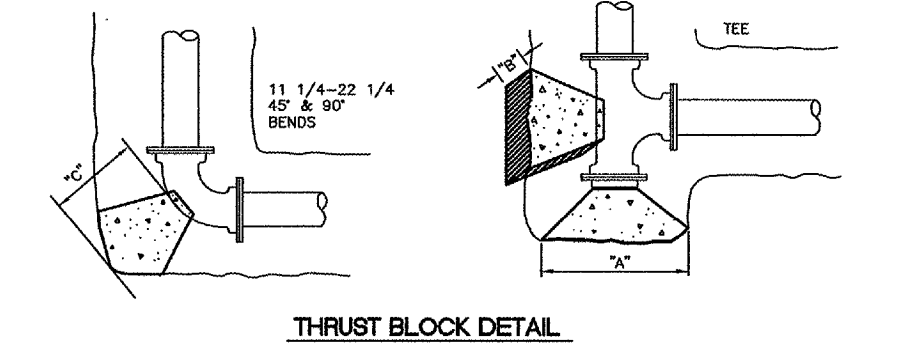


**POLYETHYLENE ENCASEMENT**  
N.T.S.

NOTE: REPAIR ALL SMALL RIPS, TEARS OR OTHER TUBE DAMAGE WITH ADHESIVE TAPE.



**TYPICAL SANITARY SEWER AND WATERMAIN INSTALLATION**  
N.T.S.



**THRUST BLOCK DETAIL**  
N.T.S.

- NOTES:**
1. ALL BENDS, TEES, PLUGS, FITTINGS OR OTHER SIGNIFICANT CHANGES SHALL BE BRACED WITH POURED CONCRETE THRUST BLOCKS AS SHOWN ON THIS DETAIL.
  2. DIMENSIONS A, B, C APPLY TO ALL BEND CONDITIONS SHOWN.
  3. ALL B & C DIMENSIONS TO BE AS REQUIRED TO REACH UNDISTURBED EARTH BUT NOT LESS THAN LISTED ON THRUST BLOCK TABLE.
  4. ALL POURED CONCRETE SHALL BE 3500 P.S.I. @ 14 DAYS.
  5. INSTALL PLUGS AT ALL RUNS OR BRANCHES DISCONTINUED FOR FUTURE SERVICE.
  6. WHEN POURING AGAINST PLUGS AND BLIND FLANGES, SET A PIECE OF 3 MIL PLASTIC AGAINST FITTINGS TO KEEP CONCRETE OFF BOLTS.

SIZE	90° BEND			45° BEND			22-1/2° BEND			11-1/4° BEND			TEE OR PLUG		
	A	B	C	A	B	C	A	B	C	A	B	C	A	B	C
6"	2'-3"	1'-2"	8"	1'-3"	1'-2"	8"	0'-8"	1'-2"	8"	0'-6"	1'-2"	7"	1'-8"	1'-2"	8"
8"	3'-7"	1'-4"	9"	2'-3"	1'-4"	9"	1'-4"	1'-4"	9"	0'-7"	1'-4"	8"	3'-2"	1'-4"	9"
10"	5'-0"	1'-6"	10"	2'-8"	1'-6"	10"	1'-5"	1'-6"	10"	0'-8"	1'-6"	8"	3'-6"	1'-6"	10"
12"	5'-10"	1'-10"	11"	3'-2"	1'-10"	11"	1'-10"	1'-8"	11"	0'-8"	1'-8"	8"	4'-2"	1'-0"	11"

INSIDE DIAMETER OF CONDUIT IN INCHES	QUANTITIES PER LINEAL FOOT OF CONDUIT					PERMANENT PAVEMENT REMOVAL AND REPLACEMENT S.Y./FOOT
	MAXIMUM TRENCH WIDTH IN FEET	BEDDING DEPTH WHERE ELIGIBLE	HAUNCHING C.Y./FOOT WHERE ELIGIBLE	INITIAL BACKFILL C.Y./FOOT WHERE ELIGIBLE	FINAL BACKFILL C.Y./FOOT PER FOOT	
6	3.58	0.04	0.03	0.17	0.13	0.62
8	3.78	0.05	0.05	0.19	0.14	0.64
10	3.97	0.05	0.06	0.20	0.15	0.66
12	4.17	0.05	0.07	0.22	0.15	0.69
14	4.36	0.05	0.08	0.24	0.16	0.71
15	4.46	0.06	0.09	0.25	0.17	0.72
16	4.56	0.06	0.10	0.26	0.17	0.73
18	4.75	0.06	0.11	0.29	0.18	0.75
20	4.94	0.06	0.12	0.31	0.18	0.77
21	5.04	0.06	0.13	0.32	0.19	0.78
24	5.33	0.07	0.15	0.35	0.20	0.81
27	5.63	0.07	0.17	0.38	0.21	0.85
28	5.72	0.07	0.18	0.39	0.21	0.86
30	5.92	0.07	0.20	0.41	0.22	0.88
33	6.21	0.08	0.22	0.45	0.23	0.91
36	6.50	0.08	0.24	0.48	0.24	0.94

BASED ON STANDARD DRAWING NO. 2 OF THE STANDARD SPECIFICATIONS FOR WATER AND SEWER MAIN CONSTRUCTION IN ILLINOIS.

**TABLE OF QUANTITIES FOR ESTIMATING PURPOSES**

LANSING MUNICIPAL AIRPORT  
LANSING, ILLINOIS  
NORTH QUADRANT SITEWORK - PHASE 1  
AND TAXIWAY G2 EXTENSION

WATERMAIN DETAILS

Copyright CMT, Inc.

**CMT**  
CRAWFORD, MURPHY & TILLY, INC.  
CONSULTING ENGINEERS  
License No. 184-00013

Lansing Municipal Airport

DESIGN BY: ARM  
DRAWN BY: JRO  
CHECKED BY: ARM  
APPROVED BY:  
DATE: 03/04/05  
JOB No: 03297-02  
IL PROJECT: IGQ-3329  
A.I.P. PROJECT: 3-17-0121-B21  
SHEET 26 OF 50 SHEETS