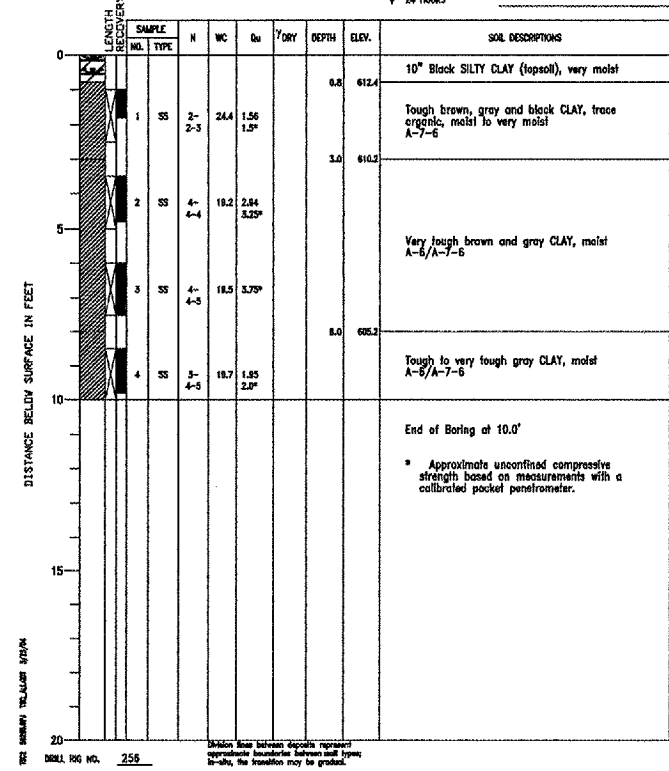
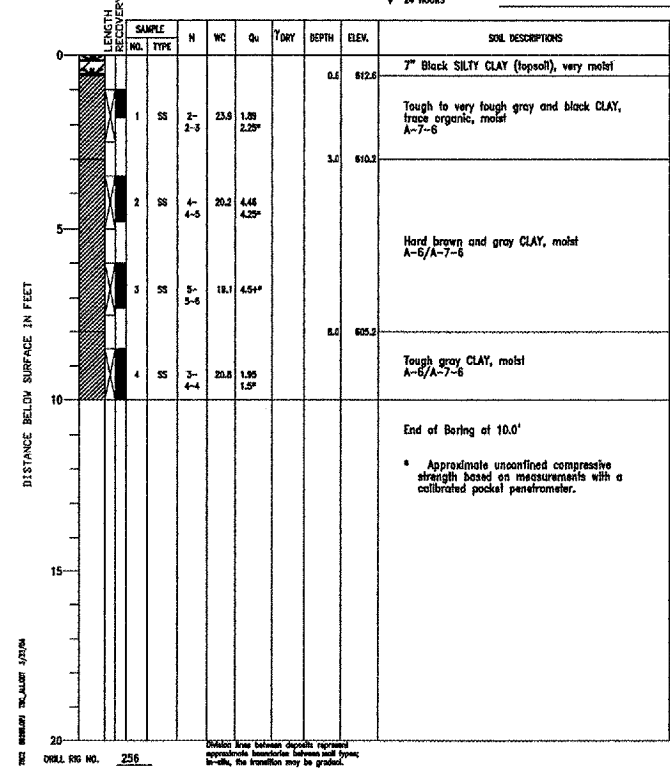


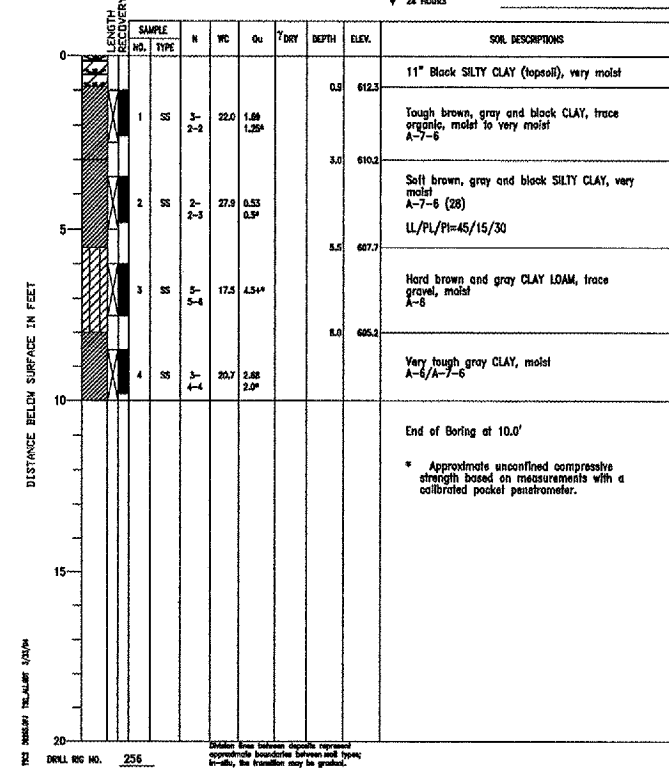
PROJECT Lansing Municipal Airport, N. Quadrant Hangar Development, Lansing, IL  
 CLIENT Crawford, Murphy & Tilly, Inc., Aurora, Illinois  
 BORING 2 DATE STARTED 11-12-03 DATE COMPLETED 11-12-03 JOB L-59,265  
 ELEVATIONS  
 GROUND SURFACE 613.2 WATER LEVEL OBSERVATIONS  
 END OF BORING 603.2 WHILE DRILLING Dry  
 AT END OF BORING Dry  
 24 HOURS



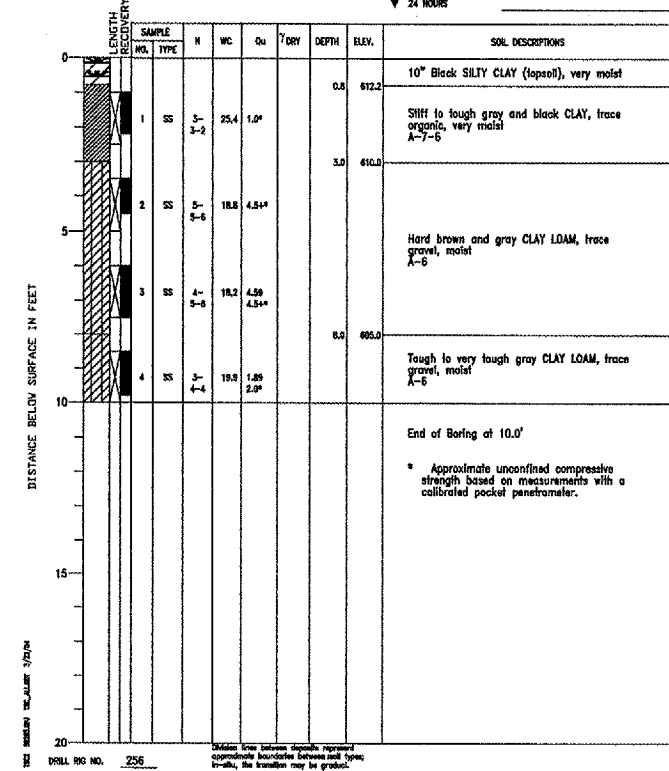
PROJECT Lansing Municipal Airport, N. Quadrant Hangar Development, Lansing, IL  
 CLIENT Crawford, Murphy & Tilly, Inc., Aurora, Illinois  
 BORING 3 DATE STARTED 11-12-03 DATE COMPLETED 11-12-03 JOB L-59,265  
 ELEVATIONS  
 GROUND SURFACE 613.2 WATER LEVEL OBSERVATIONS  
 END OF BORING 603.2 WHILE DRILLING Dry  
 AT END OF BORING Dry  
 24 HOURS



PROJECT Lansing Municipal Airport, N. Quadrant Hangar Development, Lansing, IL  
 CLIENT Crawford, Murphy & Tilly, Inc., Aurora, Illinois  
 BORING 4 DATE STARTED 11-12-03 DATE COMPLETED 11-12-03 JOB L-59,265  
 ELEVATIONS  
 GROUND SURFACE 613.2 WATER LEVEL OBSERVATIONS  
 END OF BORING 603.2 WHILE DRILLING Dry  
 AT END OF BORING Dry  
 24 HOURS



PROJECT Lansing Municipal Airport, N. Quadrant Hangar Development, Lansing, IL  
 CLIENT Crawford, Murphy & Tilly, Inc., Aurora, Illinois  
 BORING 5 DATE STARTED 11-12-03 DATE COMPLETED 11-12-03 JOB L-59,265  
 ELEVATIONS  
 GROUND SURFACE 613.0 WATER LEVEL OBSERVATIONS  
 END OF BORING 603.0 WHILE DRILLING Dry  
 AT END OF BORING Dry  
 24 HOURS

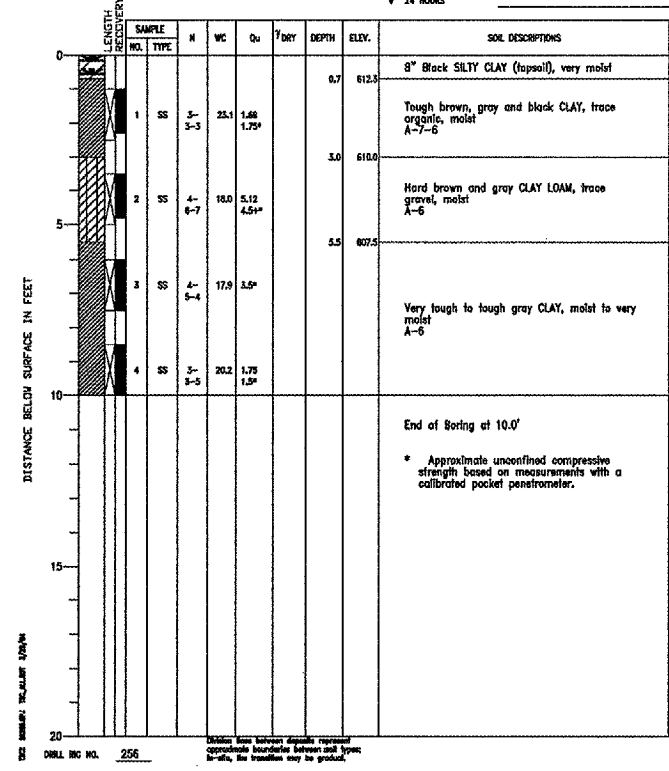


REVISIONS

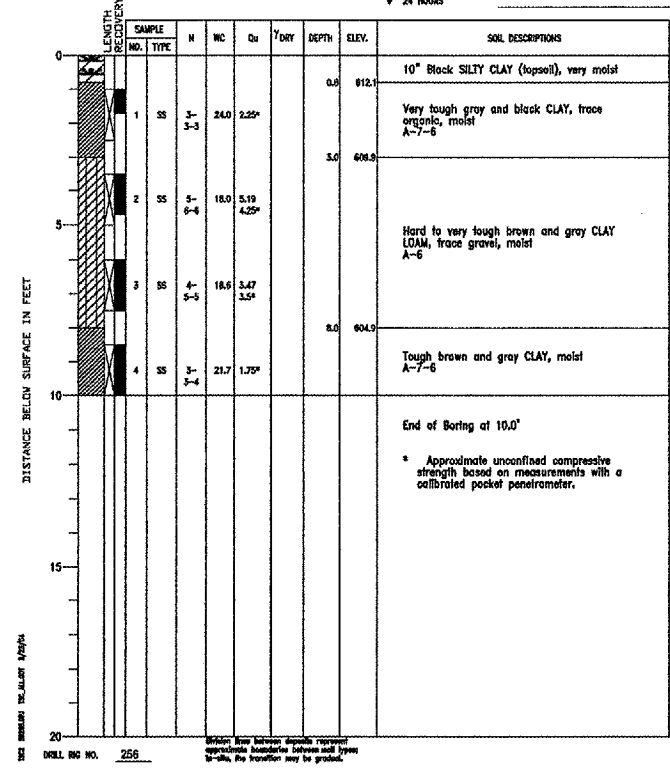
NUMBER	BY	DATE

0 1 2  
 THIS BAR IS EQUAL TO 2" AT FULL SCALE (34X22).

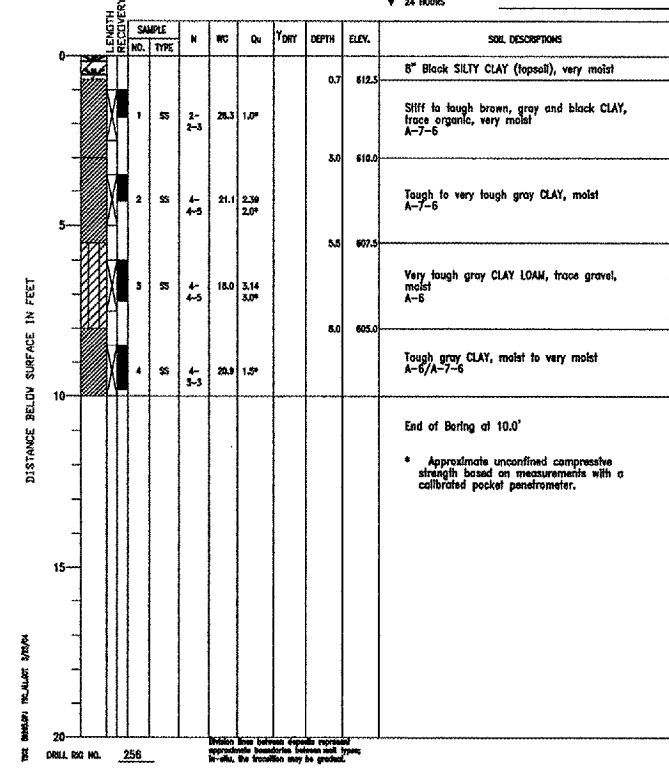
PROJECT Lansing Municipal Airport, N. Quadrant Hangar Development, Lansing, IL  
 CLIENT Crawford, Murphy & Tilly, Inc., Aurora, Illinois  
 BORING 6 DATE STARTED 11-12-03 DATE COMPLETED 11-12-03 JOB L-59,265  
 ELEVATIONS  
 GROUND SURFACE 613.0 WATER LEVEL OBSERVATIONS  
 END OF BORING 603.0 WHILE DRILLING Dry  
 AT END OF BORING Dry  
 24 HOURS



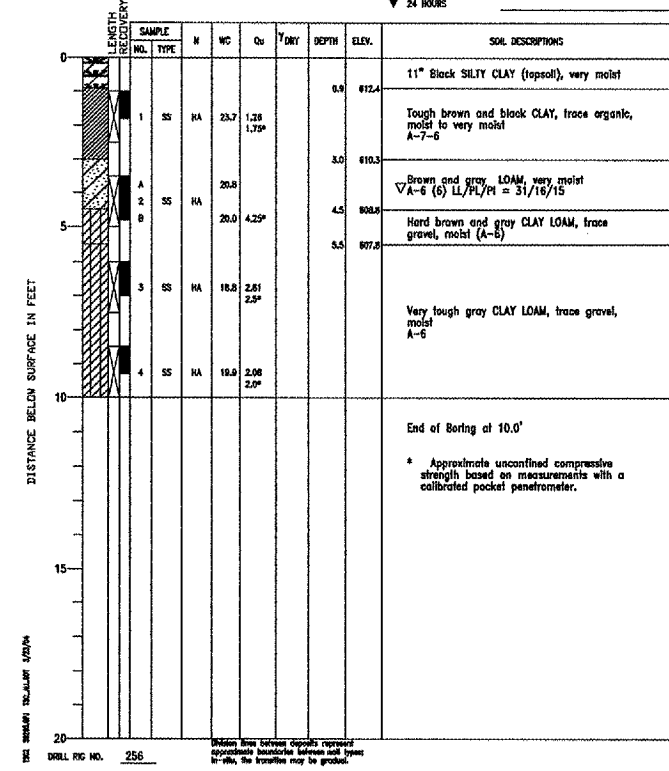
PROJECT Lansing Municipal Airport, N. Quadrant Hangar Development, Lansing, IL  
 CLIENT Crawford, Murphy & Tilly, Inc., Aurora, Illinois  
 BORING 7 DATE STARTED 11-12-03 DATE COMPLETED 11-12-03 JOB L-59,265  
 ELEVATIONS  
 GROUND SURFACE 612.9 WATER LEVEL OBSERVATIONS  
 END OF BORING 602.9 WHILE DRILLING Dry  
 AT END OF BORING Dry  
 24 HOURS



PROJECT Lansing Municipal Airport, N. Quadrant Hangar Development, Lansing, IL  
 CLIENT Crawford, Murphy & Tilly, Inc., Aurora, Illinois  
 BORING 8 DATE STARTED 11-12-03 DATE COMPLETED 11-12-03 JOB L-59,265  
 ELEVATIONS  
 GROUND SURFACE 613.0 WATER LEVEL OBSERVATIONS  
 END OF BORING 603.0 WHILE DRILLING Dry  
 AT END OF BORING Dry  
 24 HOURS



PROJECT Lansing Municipal Airport, N. Quadrant Hangar Development, Lansing, IL  
 CLIENT Crawford, Murphy & Tilly, Inc., Aurora, Illinois  
 BORING 9 DATE STARTED 11-12-03 DATE COMPLETED 11-12-03 JOB L-59,265  
 ELEVATIONS  
 GROUND SURFACE 613.3 WATER LEVEL OBSERVATIONS  
 END OF BORING 603.3 WHILE DRILLING 0.0'  
 AT END OF BORING 4.0'  
 24 HOURS



LANSING MUNICIPAL AIRPORT  
 LANSING, ILLINOIS  
 NORTH QUADRANT SITEWORK - PHASE 1  
 AND TAXIWAY G2 EXTENSION  
 ENGINEERING INFORMATION - SHEET 2

© Copyright CMT, Inc.  
**CMT**  
 CRAWFORD, MURPHY & TILLY, INC.  
 CONSULTING ENGINEERS  
 License No. 184-000813

DESIGN BY:	ARM
DRAWN BY:	JRO
CHECKED BY:	ARM
APPROVED BY:	
DATE:	03/04/05
JOB No:	03297-02
IL PROJECT:	IGQ-3329
A.I.P. PROJECT:	3-17-0121-821
SHEET	46 OF 50 SHEETS