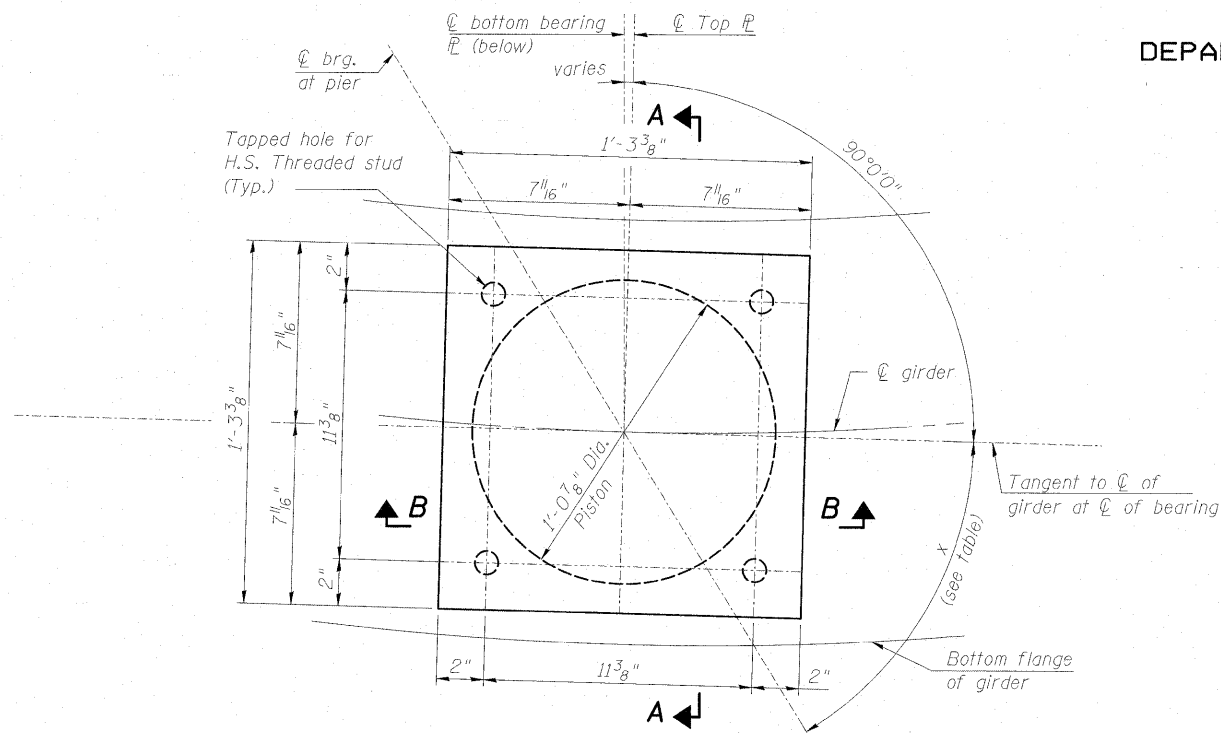


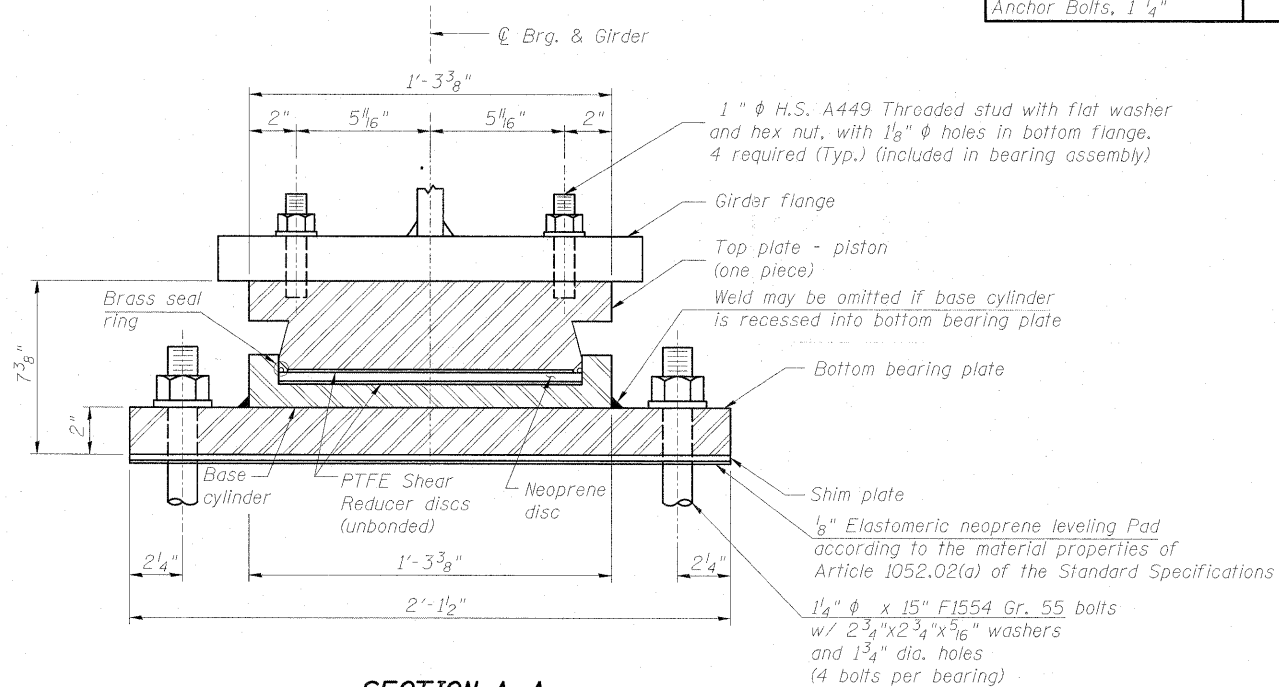
STATE OF ILLINOIS  
DEPARTMENT OF TRANSPORTATION

**BILL OF MATERIAL**

ITEM	CAPACITY k	UNIT	QUANTITY
High Load Multi-Rotational Bearings, Fixed	450	Each	7
Anchor Bolts, 1 1/4"	-	Each	28



**TOP BEARING PLATE AND PISTON PLAN**  
SCALE : NTS

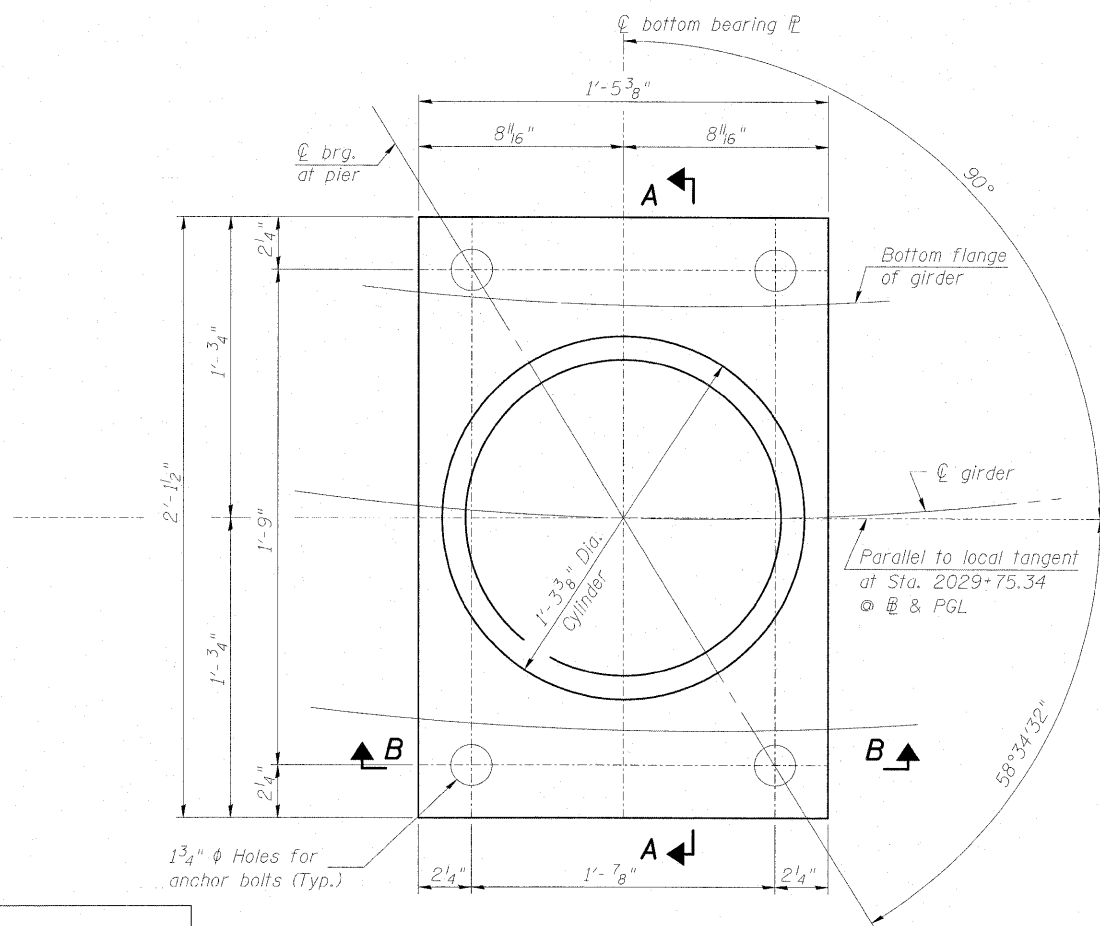


**SECTION A-A**  
SCALE : NTS

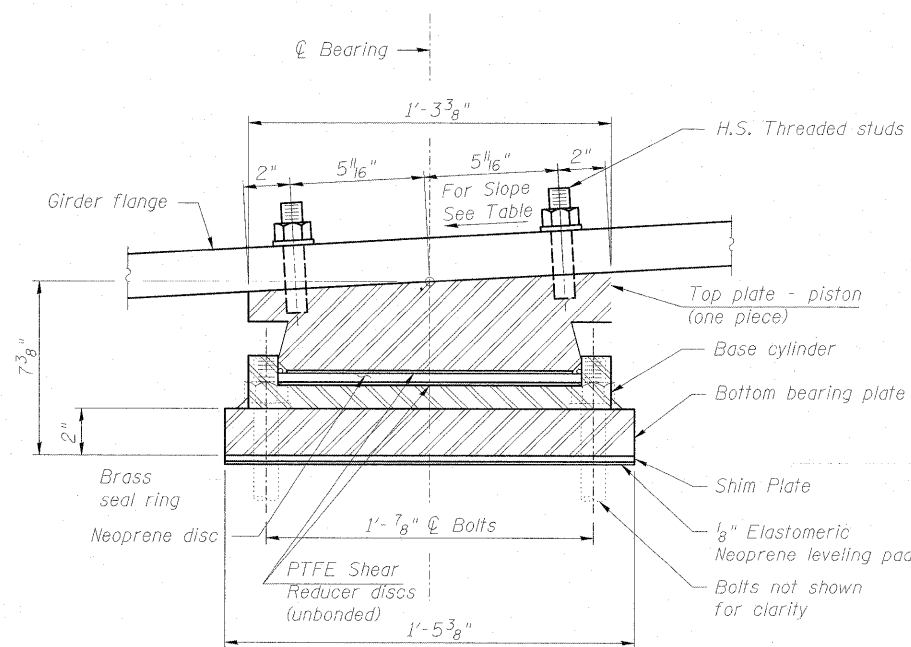
GIRDER	x
1	57°7'25"
2	57°32'28"
3	57°56'51"
4	58°20'35"
5	58°43'42"
6	59°6'14"
7	59°28'12"

**SLOPE AT BEARINGS**

GIRDER	PIER % Slope
1	0.36
2	0.30
3	0.25
4	0.21
5	0.15
6	0.11
7	0.07



**BOTTOM BEARING PLATE  
AND BASE CYLINDER PLAN**  
SCALE : NTS



**SECTION B-B**  
SCALE : NTS

Note:  
For Notes, See Sheet SC-22.

**HIGH LOAD MULTI-ROTATIONAL FIXED BEARING INFORMATION:**

- 1) Total vertical service design axial DL = 277.2 k
- 2) Total vertical service design LL without impact = 148.6 k

**FIXED BEARING DETAILS  
STRUCTURE NO. 099-0348**

DESIGNED	MJL
CHECKED	MGB
DRAWN	AMV
CHECKED	MGB



**McDonough Associates Inc.**  
Engineers / Architects  
130 East Randolph Street  
Chicago, Illinois 60601  
(312) 946-8600

SHEET NO.	F.A.I. RTE.	SECTION	COUNTY	TOTAL SHEETS	SHEET NO.
SC-23 SHEETS SC-37	55	(99-1&2) R-6	WILL	756	549
			CONTRACT NO. 60F12		
FED. ROAD DIST. NO.		ILLINOIS FED. AID PROJECT			