

CONTROL POINT #101

BM #1 = CONTROL POINT 101
 N 2055675.7106
 E 1097494.9060
 ELEV.= 693.08'

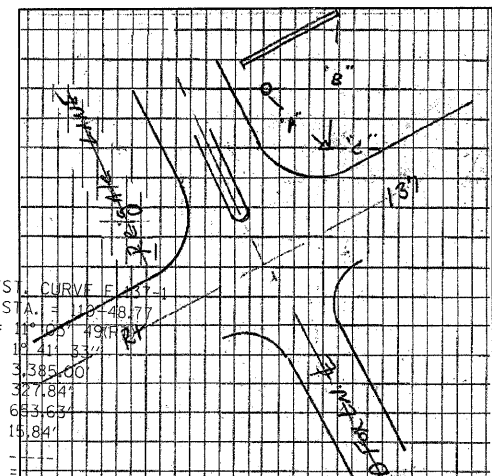
IL. RTE. 137
 (BUCKLEY ROAD)

**PROJECT BEGINS
 STA. 102+59**

STA. 104+89.91 @ IL 137 =
 STA. 44+70.91 @ O'PLAINE ROAD

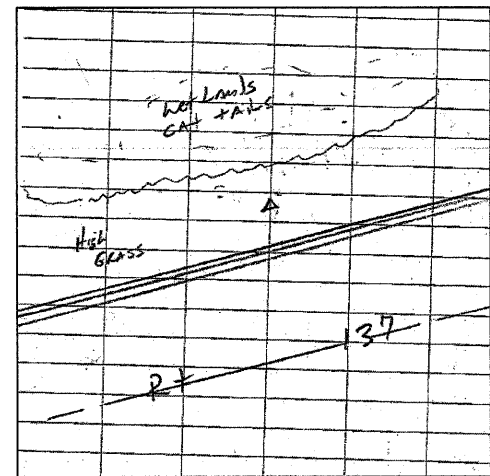
**LIMIT OF PROJECT
 STA. 49+40**

CPT #104



CONTROL POINT #102

EXIST. CURVE F 137-1
 PT STA. = 107.48777
 $\Delta = 127^\circ 49' 48''$
 $D = 19.41' 3.32''$
 $R = 3385.00'$
 $T = 327.884'$
 $L = 683.635'$
 $E = 15.84'$
 $\theta = -$
 T.R. = -
 S.E. RUN
 P.C. STA. 107.120.93
 P.T. STA. CONTROL POINT 102
 N 2056159.9652
 E 1098209.1003
 ELEV.= 692.713'



CONTROL POINT #103

CONTROL POINT 103
 N 2055934.8792
 E 1097840.9083
 ELEV.= 691.543'

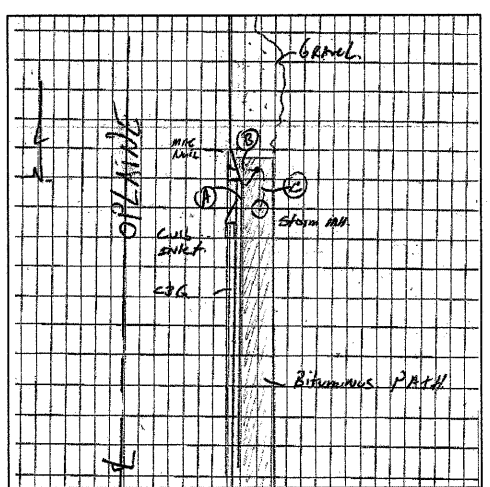
POT Sta 100+00.00

100+00

BM #1/CPT #101

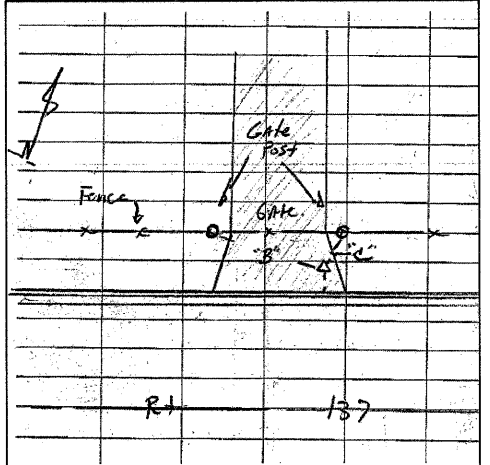
CPT #103

CPT #102



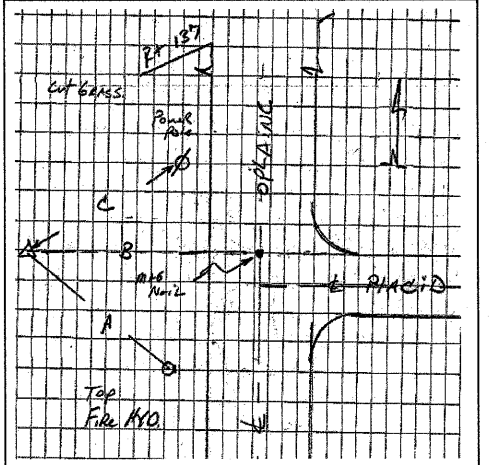
CONTROL POINT #104

CONTROL POINT 104
 N 2056170.5787
 E 1097491.0996
 ELEV.= 691.181'



CONTROL POINT #105

UNABLE TO LOCATE



CONTROL POINT #106

CONTROL POINT 106
 N 2055142.0226
 E 1097408.3349
 ELEV.= 691.579'

CPT #106

**LIMIT OF PROJECT
 STA. 41+62**

HORACE COURT

REIGATE LANE

PLACID LANE

O'PLAINE ROAD

FILE NAME = P142609-sh1-ATB.dgn

USER NAME = abebawa
 PLOT SCALE = 50.0000' / IN.
 PLOT DATE = 2/8/2011

DESIGNED -
 DRAWN -
 CHECKED -
 DATE -

REVISED -
 REVISED -
 REVISED -
 REVISED -

STATE OF ILLINOIS
 DEPARTMENT OF TRANSPORTATION

IL. ROUTE 137 @ O'PLAINE ROAD
 ALIGNMENT, TIES & BENCHMARK PLAN
 SCALE: 1" = 50' SHEET NO. OF SHEETS STA. 100+00.00 TO STA. 115+12.10

F.A.P. RTE.	SECTION	COUNTY	TOTAL SHEETS	SHEET NO.
352	56N-4	LAKE	50	9
CONTRACT NO. 60K19				
ILLINOIS FED. AID PROJECT				