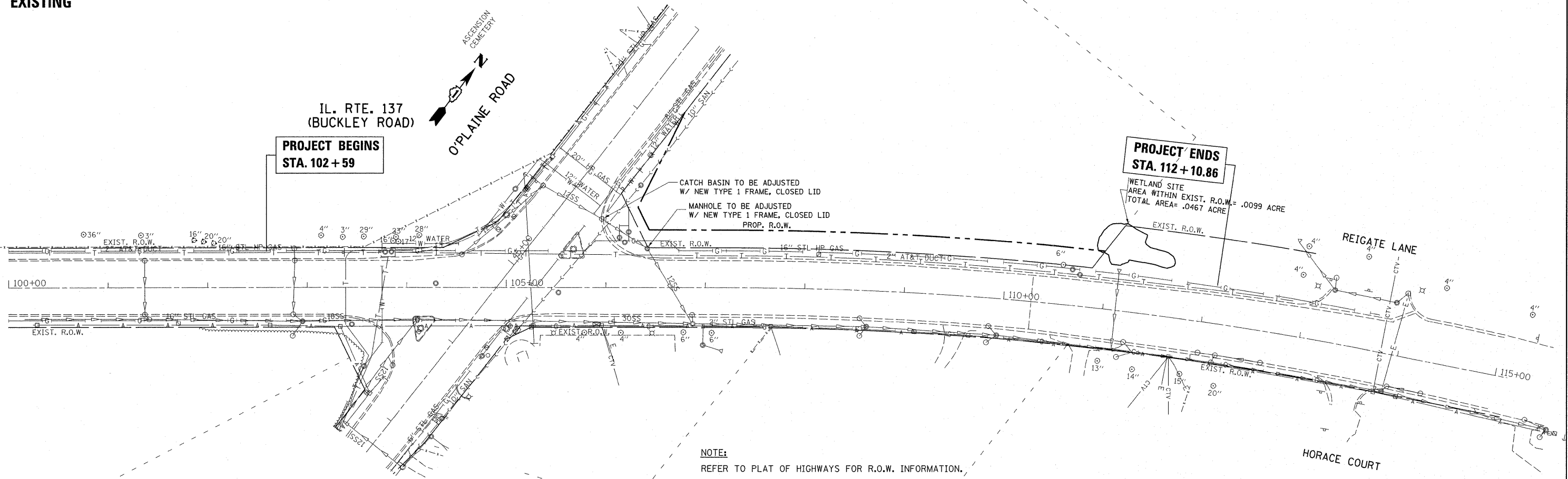
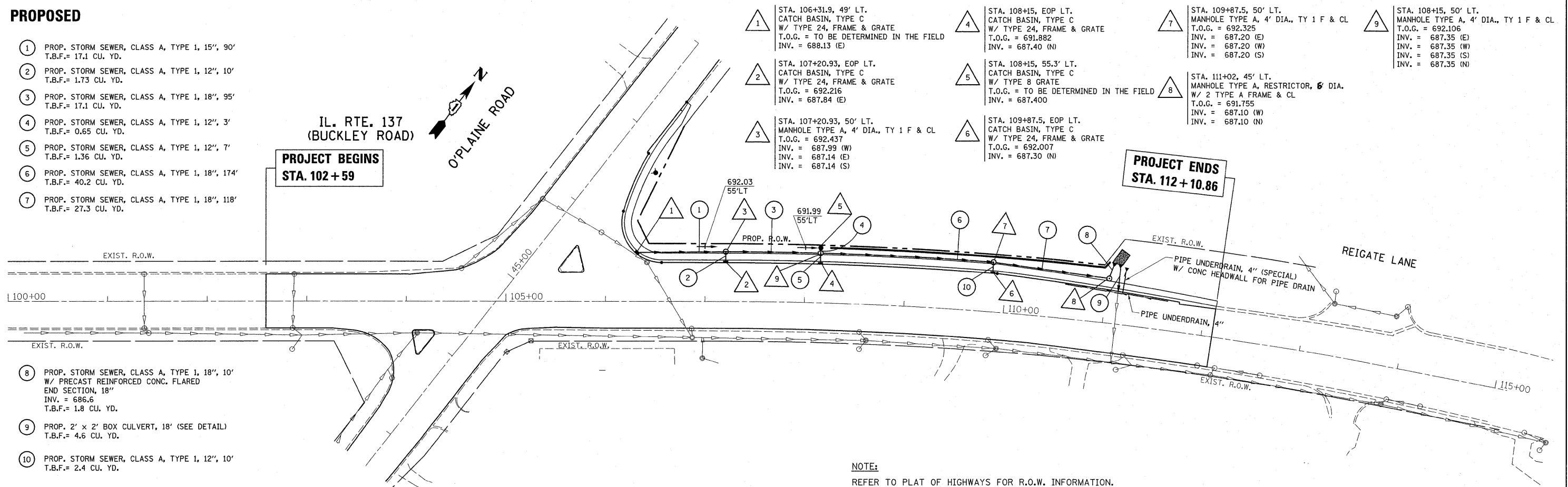


EXISTING



PROPOSED



- ① PROP. STORM SEWER, CLASS A, TYPE 1, 15', 90' T.B.F.= 17.1 CU. YD.
- ② PROP. STORM SEWER, CLASS A, TYPE 1, 12", 10' T.B.F.= 1.73 CU. YD.
- ③ PROP. STORM SEWER, CLASS A, TYPE 1, 18", 95' T.B.F.= 17.1 CU. YD.
- ④ PROP. STORM SEWER, CLASS A, TYPE 1, 12", 3' T.B.F.= 0.65 CU. YD.
- ⑤ PROP. STORM SEWER, CLASS A, TYPE 1, 12", 7' T.B.F.= 1.36 CU. YD.
- ⑥ PROP. STORM SEWER, CLASS A, TYPE 1, 18", 174' T.B.F.= 40.2 CU. YD.
- ⑦ PROP. STORM SEWER, CLASS A, TYPE 1, 18", 118' T.B.F.= 27.3 CU. YD.

- ① STA. 106+31.9, 49' LT. CATCH BASIN, TYPE C W/ TYPE 24, FRAME & GRATE T.O.G. = TO BE DETERMINED IN THE FIELD INV. = 688.13 (E)
- ② STA. 107+20.93, EOP LT. CATCH BASIN, TYPE C W/ TYPE 24, FRAME & GRATE T.O.G. = 692.216 INV. = 687.84 (E)
- ③ STA. 107+20.93, 50' LT. MANHOLE TYPE A, 4' DIA., TY 1 F & CL T.O.G. = 692.437 INV. = 687.99 (W) INV. = 687.14 (E) INV. = 687.14 (S)
- ④ STA. 108+15, EOP LT. CATCH BASIN, TYPE C W/ TYPE 24, FRAME & GRATE T.O.G. = 691.882 INV. = 687.40 (N)
- ⑤ STA. 108+15, 55.3' LT. CATCH BASIN, TYPE C W/ TYPE 8 GRATE T.O.G. = TO BE DETERMINED IN THE FIELD INV. = 687.400
- ⑥ STA. 109+87.5, EOP LT. CATCH BASIN, TYPE C W/ TYPE 24, FRAME & GRATE T.O.G. = 692.007 INV. = 687.30 (N)
- ⑦ STA. 109+87.5, 50' LT. MANHOLE TYPE A, 4' DIA., TY 1 F & CL T.O.G. = 692.325 INV. = 687.20 (E) INV. = 687.20 (W) INV. = 687.20 (S)
- ⑧ STA. 111+02, 45' LT. MANHOLE TYPE A, RESTRICTOR, 6' DIA. W/ 2 TYPE A FRAME & CL T.O.G. = 691.755 INV. = 687.10 (W) INV. = 687.10 (N)
- ⑨ STA. 108+15, 50' LT. MANHOLE TYPE A, 4' DIA., TY 1 F & CL T.O.G. = 692.106 INV. = 687.35 (E) INV. = 687.35 (W) INV. = 687.35 (S) INV. = 687.35 (N)

- ⑧ PROP. STORM SEWER, CLASS A, TYPE 1, 18", 10' W/ PRECAST REINFORCED CONC. FLARED END SECTION, 18" INV. = 686.6 T.B.F.= 1.8 CU. YD.
- ⑨ PROP. 2' x 2' BOX CULVERT, 18' (SEE DETAIL) T.B.F.= 4.6 CU. YD.
- ⑩ PROP. STORM SEWER, CLASS A, TYPE 1, 12", 10' T.B.F.= 2.4 CU. YD.

FILE NAME = P142609-shd-dr.dwg	USER NAME = beward1	DESIGNED -	REVISED -	STATE OF ILLINOIS DEPARTMENT OF TRANSPORTATION	IL. ROUTE 137 & O'PLAINE ROAD EXISTING & PROPOSED DRAINAGE PLAN			F.A.P. RTE. 352	SECTION 56N-4	COUNTY LAKE	TOTAL SHEETS 50	SHEET NO. 14	
PLOT SCALE = 50.0000 "/ IN.		CHECKED -	REVISED -		SCALE: 1" = 50'	SHEET NO. OF SHEETS	STA. 100+00.00 TO STA. 115+00.00	CONTRACT NO. 60K19		ILLINOIS FED. AID PROJECT			
PLOT DATE = 2/23/2011		DATE -	REVISED -										