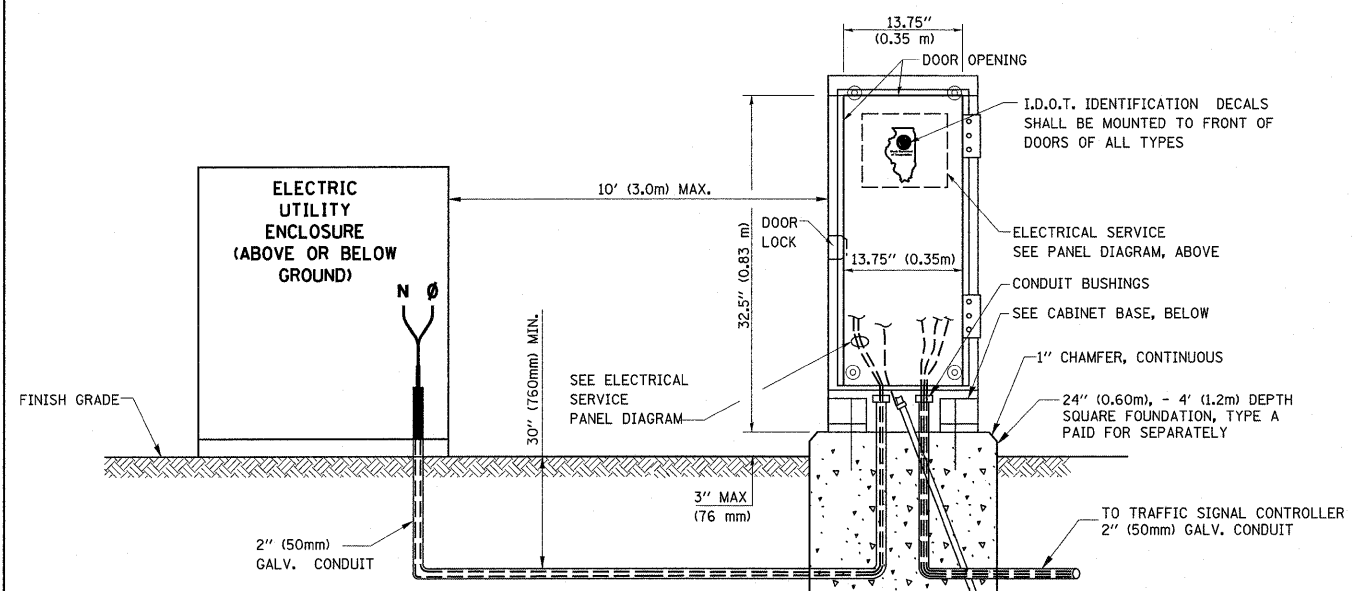
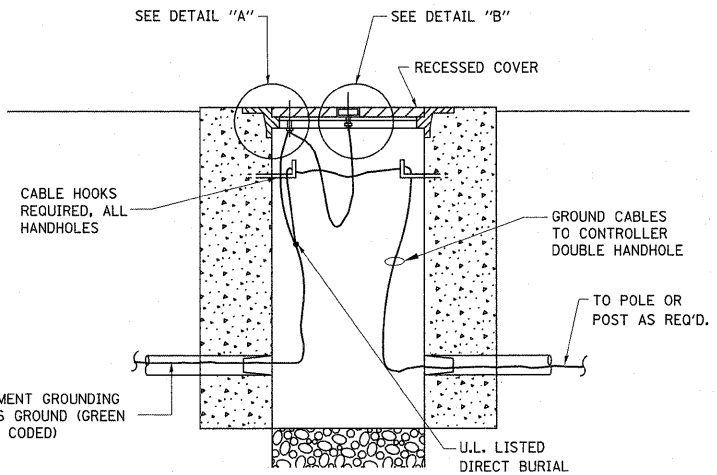
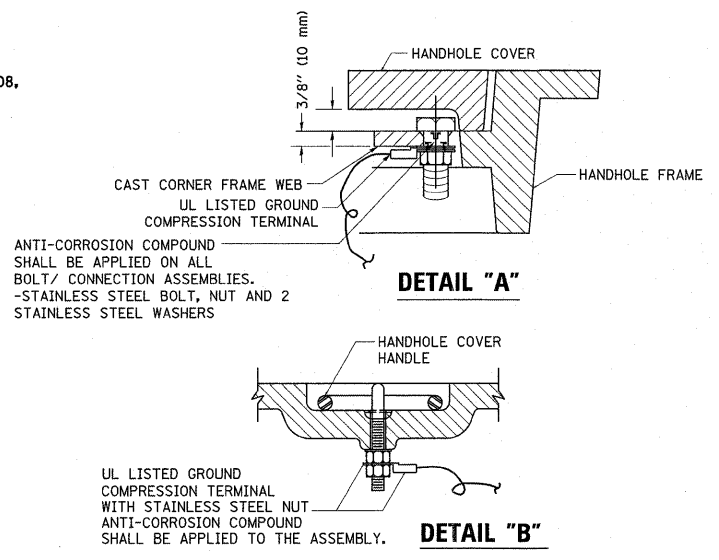
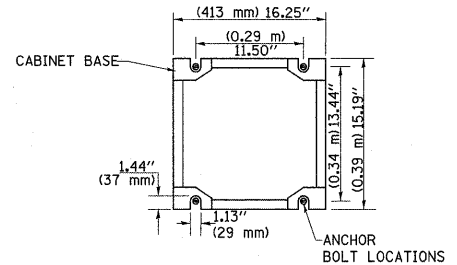


**ELECTRICAL SERVICE - PANEL DIAGRAM (TYPICAL FOR POLE AND GROUND MOUNTED SERVICE)**  
**SERVICE INSTALLATION POLE MOUNT (SHOWN)**  
 (NOT TO SCALE)

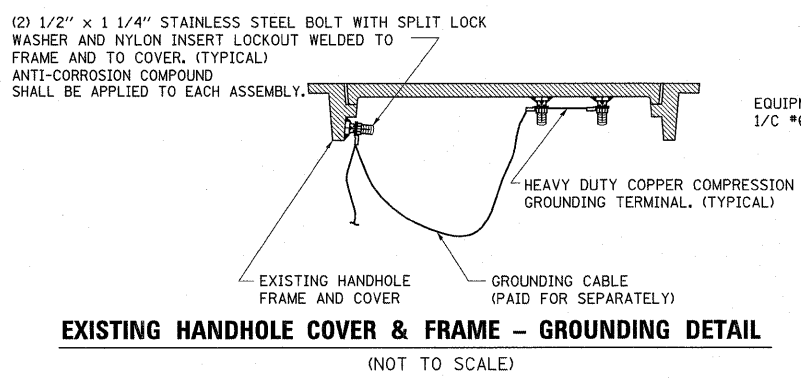


**SERVICE INSTALLATION GROUND MOUNT**  
 (NOT TO SCALE)

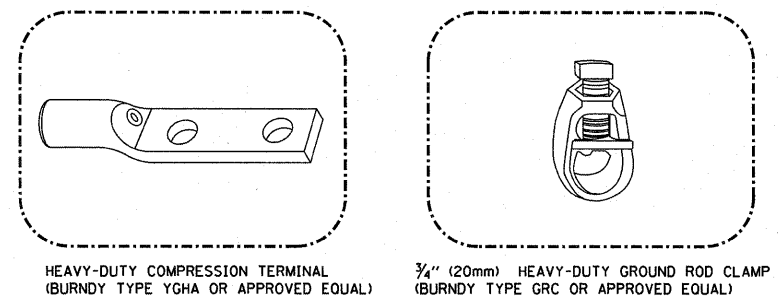
**CABINET - BASE BOLT PATTERN**  
 (NOT TO SCALE)



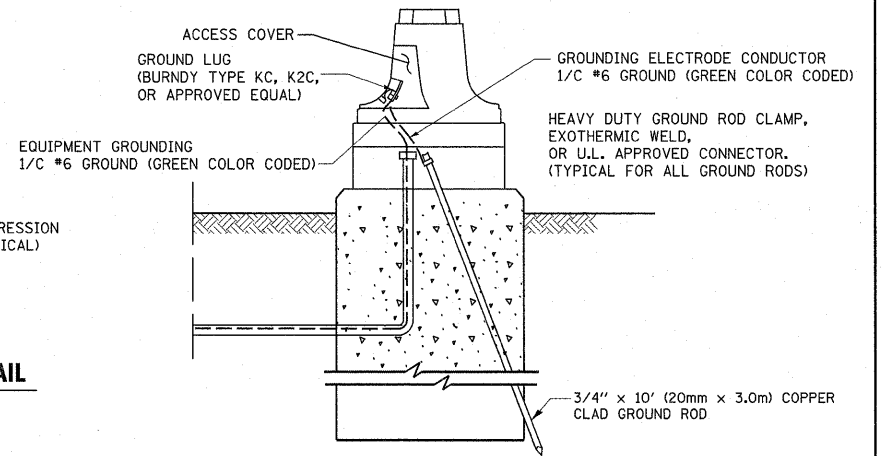
**HANDHOLE COVER & FRAME - GROUNDING DETAIL**  
 (NOT TO SCALE)



**EXISTING HANDHOLE COVER & FRAME - GROUNDING DETAIL**  
 (NOT TO SCALE)



- NOTES:**
- ALL CLAMPS SHALL BE BRONZE OR COPPER, UL APPROVED.
  - GROUND CABLE SHALL BE LOOPED OVER HOOKS IN THE HANDHOLES 6.5' (2.0m) SLACK SHALL BE PROVIDED IN SINGLE HANDHOLES 13' (4.0m) OF SLACK SHALL BE PROVIDED IN DOUBLE HANDHOLES. 5' (1.4m) OF SLACK SHALL BE PROVIDED BETWEEN FRAME AND COVER.



**MAST ARM POLE / POST-GROUNDING DETAIL**  
 (NOT TO SCALE)

FILE NAME = c:\pwork\psidat\abebawa\2108337\Dist1.dgn	USER NAME = abebawa	DESIGNED - DAD	REVISED -
PLOT SCALE = 50.0000 / / IN.	CHECKED - DAD	DRAWN - BCK	REVISED -
PLOT DATE = 2/28/2011	DATE - 10-28-09		REVISED -

**STATE OF ILLINOIS DEPARTMENT OF TRANSPORTATION**

<b>DISTRICT ONE</b>	
<b>STANDARD TRAFFIC SIGNAL DESIGN DETAILS</b>	
SCALE: NONE	SHEET NO. 3 OF 6 SHEETS
STA.	TO STA.

F.A. R. 352	SECTION 56N-4	COUNTY LAKE	TOTAL SHEETS 50	SHEET NO. 33C
<b>TS-05</b>			CONTRACT NO. 60K19	
FED. ROAD DIST. NO. 1 ILLINOIS FED. AID PROJECT				