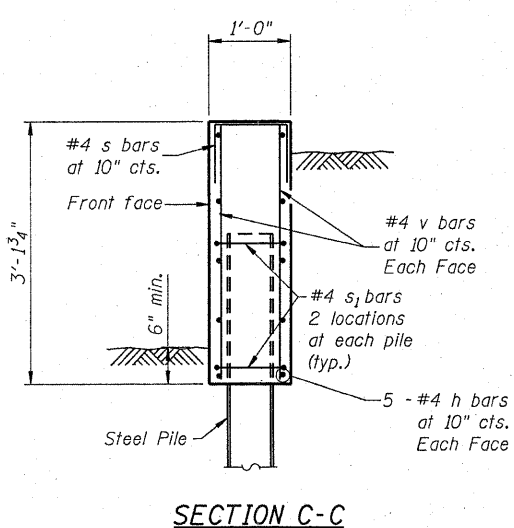


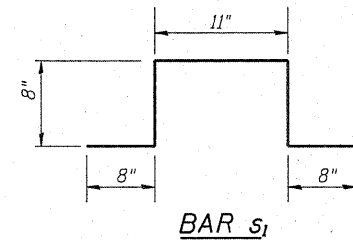
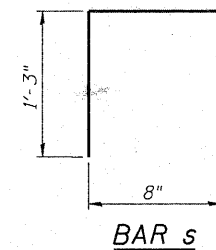
**PILE DATA**

Type: Steel W6x25  
 Est. Minimum Length: 10' \*  
 No. Production Piles: 46  
 No. Test Piles: 0  
 \* Minimum Embedment = 8'-0"



**TOTAL BILL OF MATERIAL**

ITEM	UNIT	TOTAL
Structure Excavation	Cu. Yds.	105
Concrete Structures	Cu. Yds.	41.6
Reinforcement Bars	Pounds	4,840
Geocomposite Wall Drain	Sq. Yds.	72
Porous Granular Embankment (Special)	Cu. Yds.	41.5
Furnishing Steel Piles W6x25 (Special)	Foot	370
Driving Piles (Special)	Foot	370



**BILL OF MATERIAL**

Bar No.	Size	Length	Shape
h	60 #4	30'-11"	—
h1	56 #4	26'-2"	—
h2	14 #4	7'-8"	—
s	337 #4	3'-2"	□
s1	74 #4	3'-7"	⌒
v	421 #4	2'-10"	—
v1	254 #4	5'-1"	—
Structure Excavation	Cu. Yd.	105	
Reinforcement Bars	Pound	4,840	
Concrete Structures	Cu. Yd.	41.6	
Furnishing Steel piles W6x25 (Special)	Foot	370	
Driving Piles (Special)	Foot	370	

**NOTES:**

- Cut h1 and h2 bars in field to maintain clear cover from edge of concrete.
- Bend h2 bars in the field to fit.
- Steel Piling shall be driven to not less than a minimum embedment length of 8'-0".
- Stations and offsets based on proposed PGL for Buckley Road.
- Reinforcement bars shall conform to the requirements of ASTM A 706 Gr 60. See Supplemental Specifications and Recurring Special Provisions.

COMPANY NAME: SEC Group, Inc.  
 PROJECT CONTACT: Robert G. Davies  
 DATE PLOTTED: 07/27/2011 8:29:47 AM  
 FILE NAME: 0600096.dwg  
 PLOT DRIVER: pdfcut  
 PEN TABLE: Struct 22x34.tbl

**SEC Group, Inc.**  
 A HVR Group Company  
 420 N. First Street  
 Moline, IL 61901-2138  
 T: 815.386.1778 F: 815.386.1791  
 www.secgroup.com

USER NAME	DESIGNED	REVISIONS
whead	CHECKED -	REVISIONS -
	CHECKED -	REVISIONS -
	DRAWN -	REVISIONS -
	CHECKED - 2/3/11	REVISIONS -

**STATE OF ILLINOIS  
 DEPARTMENT OF TRANSPORTATION**

**BILL OF MATERIAL, AND DETAILS**  
 SHEET NO. 2 OF 4 SHEETS

F.A. RTE.	SECTION	COUNTY	TOTAL SHEETS	SHEET NO.
352	56N-4	LAKE	50	35A
CONTRACT NO. 60K19				
ILLINOIS FED. AID PROJECT				