

F.A.U. RTE.	SECTION	COUNTY	TOTAL SHEETS	SHEET NO.
3565	B-R-2-RS	COOK	37	1
FED. ROAD DIST. NO. 1	ILLINOIS	CONTRACT NO. 60K54		

37 + 1 = 38

D-91-523-10



LOCATION OF SECTION INDICATED THUS: - **█** -

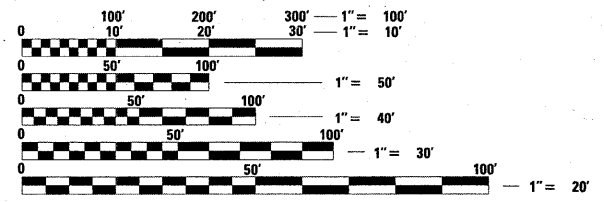
STATE OF ILLINOIS
DEPARTMENT OF TRANSPORTATION
DIVISION OF HIGHWAYS

**PROPOSED
HIGHWAY PLANS**

**FAU 3565: ILLINOIS 171 (ARCHER AVENUE)
FROM TEC AIR AVE. TO ROBERTS RD.
SECTION: B-R-2-RS
RESURFACING (3P)
PROJECT NO.: M-3565(004)
COOK COUNTY
C-91-523-10**

FOR INDEX OF SHEETS, SEE SHEET NO. 2

PROJECT IS LOCATED IN THE VILLAGES OF
WILLOW SPRINGS, JUSTICE, AND BEDFORD PARK



FULL SIZE PLANS HAVE BEEN PREPARED USING STANDARD ENGINEERING SCALES. REDUCED SIZED PLANS WILL NOT CONFORM TO STANDARD SCALES. IN MAKING MEASUREMENTS ON REDUCED PLANS, THE ABOVE SCALES MAY BE USED.

J.U.L.I.E.
JOINT UTILITY LOCATION INFORMATION FOR EXCAVATION
1-800-892-0123 (OR 811)

PROJECT ENGINEER: JENPAI P. CHANG (847) 705 - 4432
PROJECT MANAGER: KEN ENG

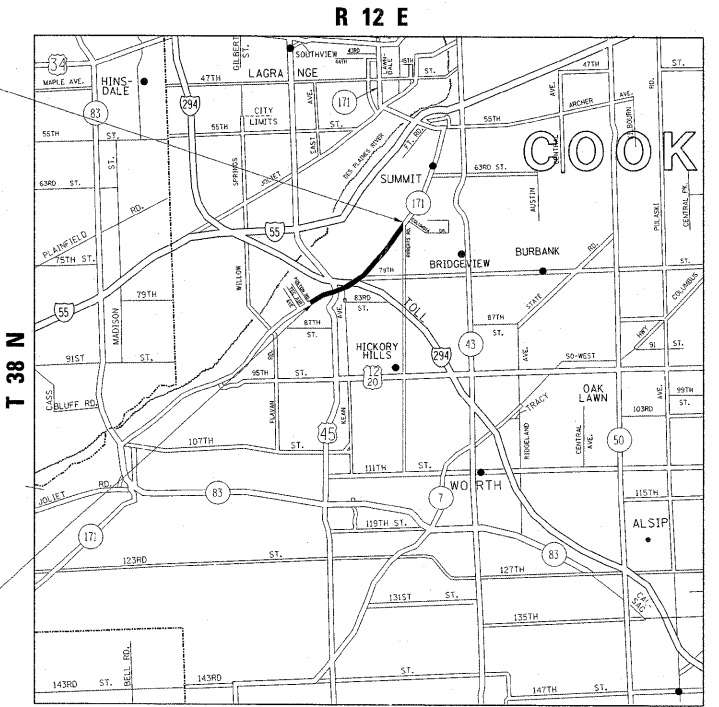
CONTRACT NO. 60K54

PROJECT ENDS
STATION 168 + 38

OMISSION @ I-294 BRIDGE
(WESTBOUND IL. RTE. 171)
STA. 209+21 - STA. 233+73
STATION EQUATION:
STA. 240+49.16 (WB) = STA. 85+00 (EB)

OMISSION @ US RTE. 12/20/45 BRIDGE
(WESTBOUND IL. RTE. 171)
STA. 25+80 - STA. 203+47
STATION EQUATION:
STA. 200+10.57 (WB) = STA. 44+00 (EB)

PROJECT BEGINS
STATION 21 + 07



GROSS LENGTH OF PROJECT = 14,723 FEET = 2.79 MILES
NET LENGTH OF PROJECT = 12,126 FEET = 2.30 MILES



TRAFFIC DATA:

2009 ADT = 15,700 - 17,700
SPEED LIMIT = 35 - 45 MPH

OMISSION @ RAMP J BRIDGE
(EASTBOUND IL. RTE. 171)
STA. 72+52 - STA. 74+27

OMISSION @ I-294 BRIDGE
(EASTBOUND IL. RTE. 171)
STA. 65+97 - STA. 69+25

OMISSION @ US RTE. 12/20/45 BRIDGE
(EASTBOUND IL. RTE. 171)
STA. 25+80 - STA. 46+74
STATION EQUATION:
STA. 200+10.57 (WB) = STA. 44+00 (EB)

STATE OF ILLINOIS
DEPARTMENT OF TRANSPORTATION
DIVISION OF HIGHWAYS

SUBMITTED JANUARY 28, 2010

Diane M. O'Keefe
DEPUTY DIRECTOR OF HIGHWAYS, REGION ENGINEER

March 25 2011
Scott E. Stitt, P.E.
acting ENGINEER OF DESIGN AND ENVIRONMENT

March 25 2011
Christine M. Reed
DIRECTOR OF HIGHWAYS, CHIEF ENGINEER

PRINTED BY THE AUTHORITY
OF THE STATE OF ILLINOIS