

STATE OF ILLINOIS
 DEPARTMENT OF TRANSPORTATION
 DIVISION OF HIGHWAYS

**PROPOSED
 HIGHWAY PLANS**

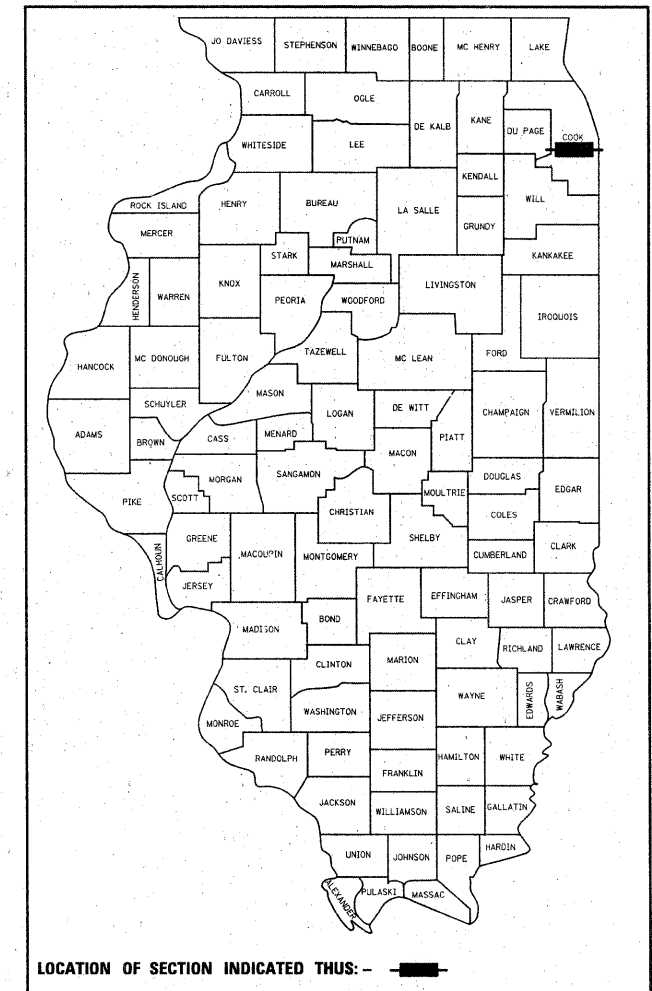
F.A.P. ROUTE 029 U.S. 12/20 (95th ST.)
 COMMERCIAL AVE. TO I-90 (CHICAGO SKYWAY)
 SECTION 2010-025RS
 RESURFACING (3P)
 PROJECT : NHF-0029(113)
 COOK COUNTY

C-91-524-10

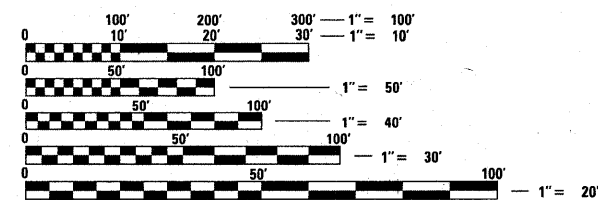
FOR INDEX OF SHEETS, SEE SHEET NO. 2

F.A.P. RTE.	SECTION	COUNTY	TOTAL SHEETS	SHEET NO.
029	2010-025	Cook	14	1
		ILLINOIS	CONTRACT NO. 60K55	

D-91-524-10



IMPROVEMENT IS LOCATED IN THE CITY OF CHICAGO

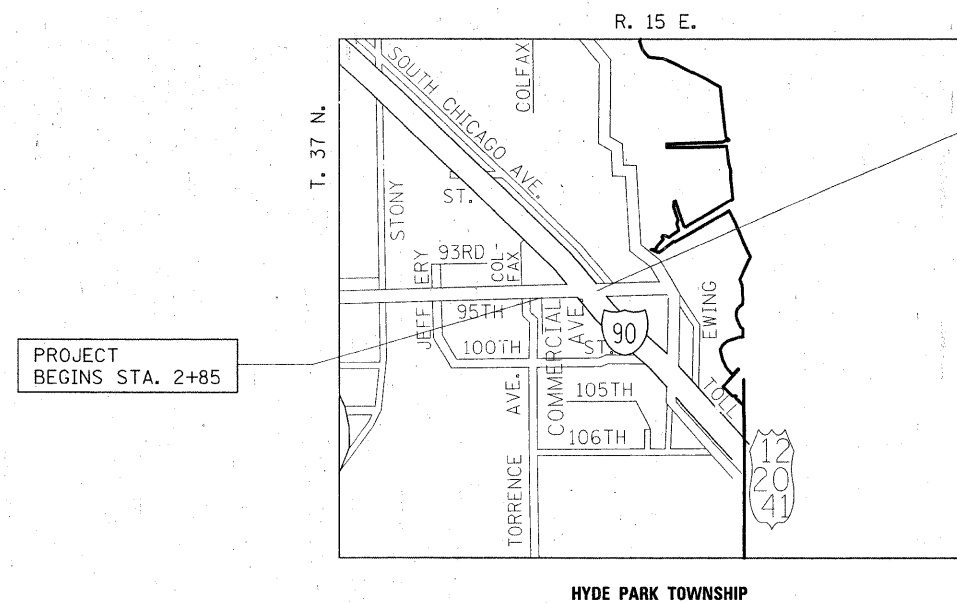


FULL SIZE PLANS HAVE BEEN PREPARED USING STANDARD ENGINEERING SCALES. REDUCED SIZED PLANS WILL NOT CONFORM TO STANDARD SCALES. IN MAKING MEASUREMENTS ON REDUCED PLANS, THE ABOVE SCALES MAY BE USED.

J.U.L.I.E.
 JOINT UTILITY LOCATION INFORMATION FOR EXCAVATION
 1-800-892-0123
 OR 811

PROJECT ENGINEER : JENPAI CHANG (847)-705-4432
 PROJECT MANAGER : KEN ENG

CONTRACT NO. 60K55



PROJECT ENDS STA. 10+07



TRAFFIC DATA
 2009 ADT = 12,100
 SPEED LIMIT = 35 MPH

GROSS LENGTH & NET LENGTH = 722 FT. = 0.157 MILE

STATE OF ILLINOIS
 DEPARTMENT OF TRANSPORTATION
 DIVISION OF HIGHWAYS

SUBMITTED JANUARY 21, 2011

Diane M. O'Keefe
 DEPUTY DIRECTOR OF HIGHWAYS, REGION ENGINEER

March 05 2011

Scott E. Stitt, P.E.
 acting ENGINEER OF DESIGN AND ENVIRONMENT

March 05 2011

Christine M. Reed
 DIRECTOR OF HIGHWAYS, CHIEF ENGINEER

**PRINTED BY THE AUTHORITY
 OF THE STATE OF ILLINOIS**