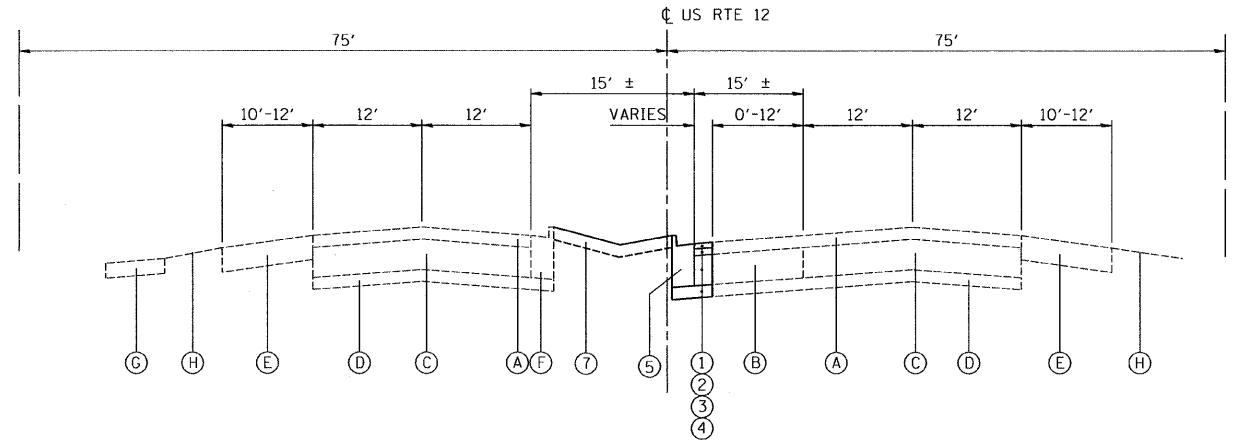
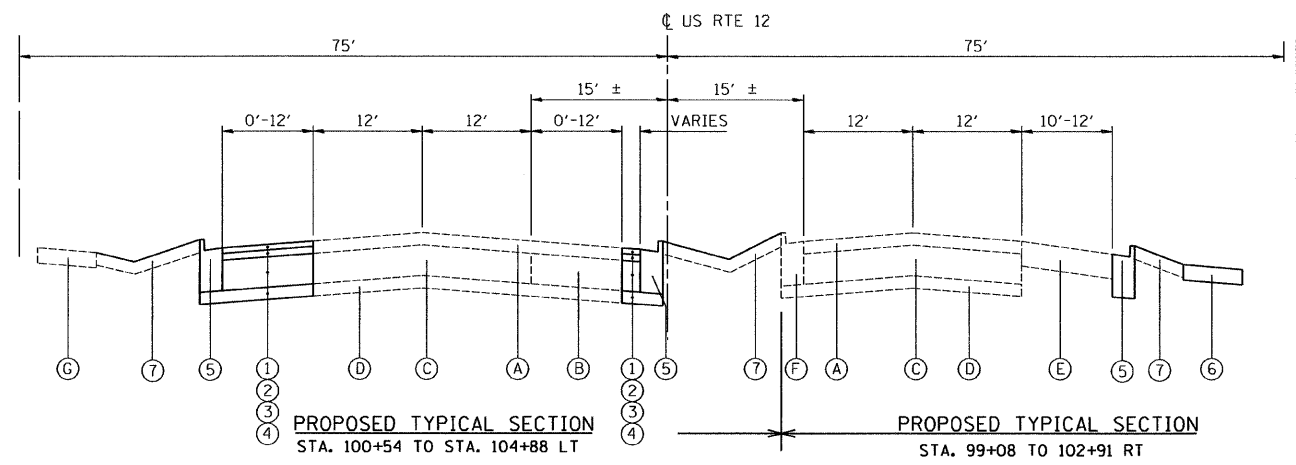


EXISTING TYPICAL SECTION
STA. 94+92 TO STA. 104+88



PROPOSED TYPICAL SECTION
STA. 94+92 TO STA. 97+98

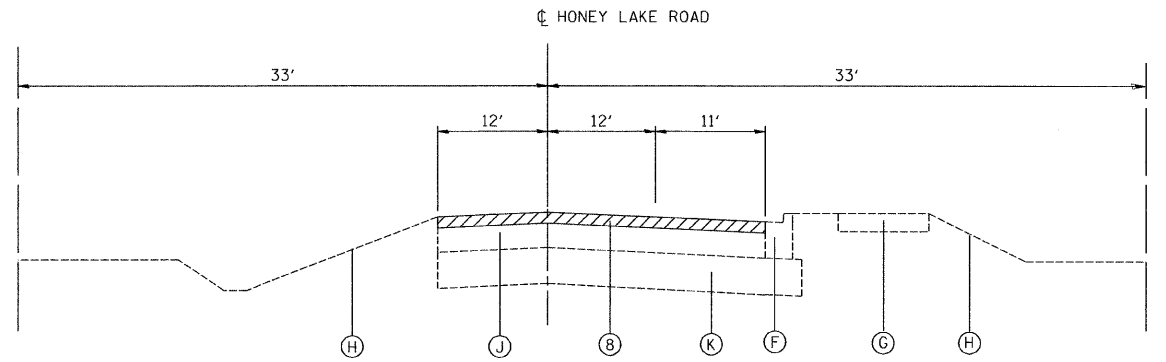


EXISTING CONDITIONS:

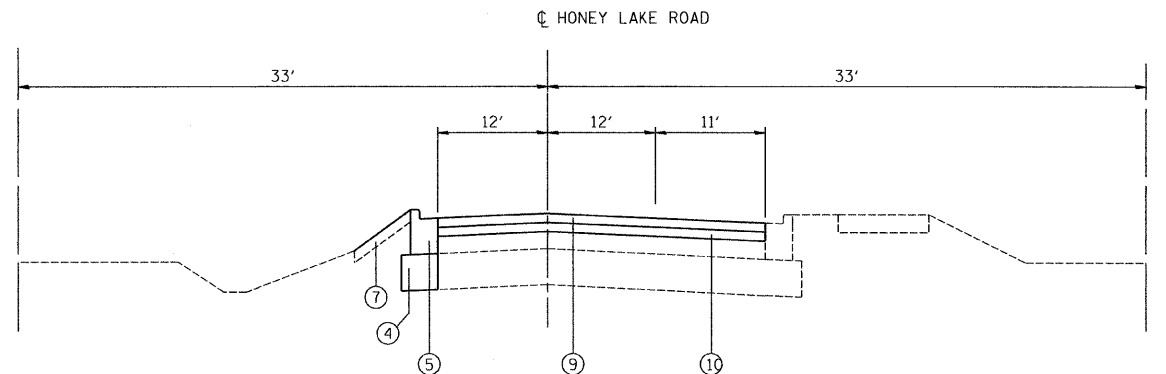
- (A) HMA SURFACE COURSE 4"±
 - (B) HMA BASE COURSE 10"
 - (C) PCC BASE COURSE 10"
 - (D) AGGREGATE SUBBASE 4"
 - (E) HMA SHOULDER 8"
 - (F) COMBINATION CURB AND GUTTER
 - (G) SIDEWALK
 - (H) GRASS MEDIAN OR SLOPE
 - (J) HMA PAVEMENT
 - (K) AGGREGATE BASE COURSE
- SEE REMOVAL PLANS FOR LOCATIONS OF ITEMS TO BE REMOVED

PROPOSED IMPROVEMENTS:

- (1) POLYMERIZED HOT-MIX ASPHALT SURFACE COURSE, MIX "F", N90, 1 3/4"
- (2) POLYMERIZED HOT-MIX ASPHALT BINDER COURSE IL-19.0, N90, 2 1/4"
- (3) PCC BASE COURSE, 10"
- (4) SUBBASE GRANULAR MATERIAL, 4"
- (5) COMBINATION CONCRETE CURB AND GUTTER, TYPE B-6.24
- (6) PORTLAND CEMENT CONCRETE SIDEWALK 5 INCH
- (7) TOPSOIL, FURNISH & PLACE, 4" SODDING, SALT TOLERANT FERTILIZER NUTRIENTS
- (8) HMA SURFACE REMOVAL 2 1/4"
- (9) HOT-MIX ASPHALT SURFACE COURSE, MIX D, N70, 1 1/2"
- (10) POLYMERIZED LEVELING BINDER (MACHINE METHOD) IL 4.75, N50, 1"



EXISTING TYPICAL SECTION
STA. 17+96 TO STA 19+50



PROPOSED TYPICAL SECTION
STA. 17+96 TO STA 19+50

*CONTRACTOR SHALL MILL FIRST BEFORE PATCHING

HOT-MIX ASPHALT MIXTURE REQUIREMENTS	
MIXTURE TYPE	AIR VOIDS @ Ndes
ROADWAY - US 12	
POLYMERIZED HOT-MIX ASPHALT SURFACE COURSE, MIX "F", N90 (IL 9.5mm) (1 3/4")	4% @ 90 GYR
POLYMERIZED HOT-MIX ASPHALT BINDER COURSE, IL-19.0, N90 (2 1/4")	4% @ 50 GYR
ROADWAY - HONEY LAKE ROAD	
HOT-MIX ASPHALT SURFACE COURSE, MIX "D", N70 (IL 9.5mm) (1 1/2")	4% @ 70 GYR
POLYMERIZED LEVELING BINDER (MACHINE METHOD), IL 4.75, N50 (1")	4% @ 50 GYR
HOT-MIX ASPHALT REPLACEMENT OVER PATCHES	
POLYMERIZED HOT-MIX ASPHALT SURFACE COURSE, MIX "F", N90 (IL 9.5mm) (2")	4% @ 90 GYR
PATCHING	
CLASS D PATCHES (HMA BINDER IL 19mm) (6 INCHES) (IN TWO LIFTS)	4% @ 70 GYR
CLASS D PATCHES (HMA BINDER IL 19mm) (12 INCHES) (IN THREE LIFTS)	4% @ 70 GYR
DRIVEWAYS	
HOT-MIX ASPHALT SURFACE COURSE, MIX "C", N50 (IL 9.5mm) 2"	4% @ 50 GYR
HOT-MIX ASPHALT BASE COURSE (HMA BINDER IL 19 mm) 8" (IN TWO LIFTS)	4% @ 50 GYR

THE UNIT WEIGHT USED TO CALCULATE ALL HOT-MIX ASPHALT SURFACE MIXTURES IS 112 LBS/SQ YD/IN.

THE "AC TYPE" FOR POLYMERIZED HMA MIXES SHALL BE "SBS/SBR PG 70-22" AND FOR NON-POLYMERIZED HMA THE "AC TYPE" SHALL BE "PG 64-22" UNLESS MODIFIED BY DISTRICT ONE SPECIAL PROVISIONS.

FOR "PERCENT OF RAP" SEE DISTRICT ONE SPECIAL PROVISIONS.