

STATE OF ILLINOIS
DEPARTMENT OF TRANSPORTATION
DIVISION OF HIGHWAYS

F.A.U. RTE.	SECTION	COUNTY	TOTAL SHEETS	SHEET NO.
307	2010-140-RS	COOK	* 29	1
FED. ROAD DIST. NO. 1		ILLINOIS		

D-91-268-11
CONTRACT NO. 60N19

* +1
= 30

PROPOSED HIGHWAY PLANS

FAP 307 (IL 64 / NORTH AVENUE)
MILWAUKEE AVENUE TO CLARK STREET

SECTION: 2010-140-RS

RESURFACING (3P)

PROJECT: NHF-0307(030)

COOK COUNTY

C-91-268-11

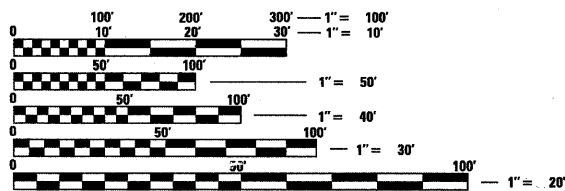
FOR INDEX OF SHEETS, SEE SHEET NO. 2

IMPROVEMENT LOCATED WITHIN
THE CITY OF CHICAGO

DESIGN DESIGNATION
MAJOR ARTERIAL

TRAFFIC DATA

IL ROUTE 64
2009 ADT = 34,900
POSTED SPEED LIMIT = 30 MPH



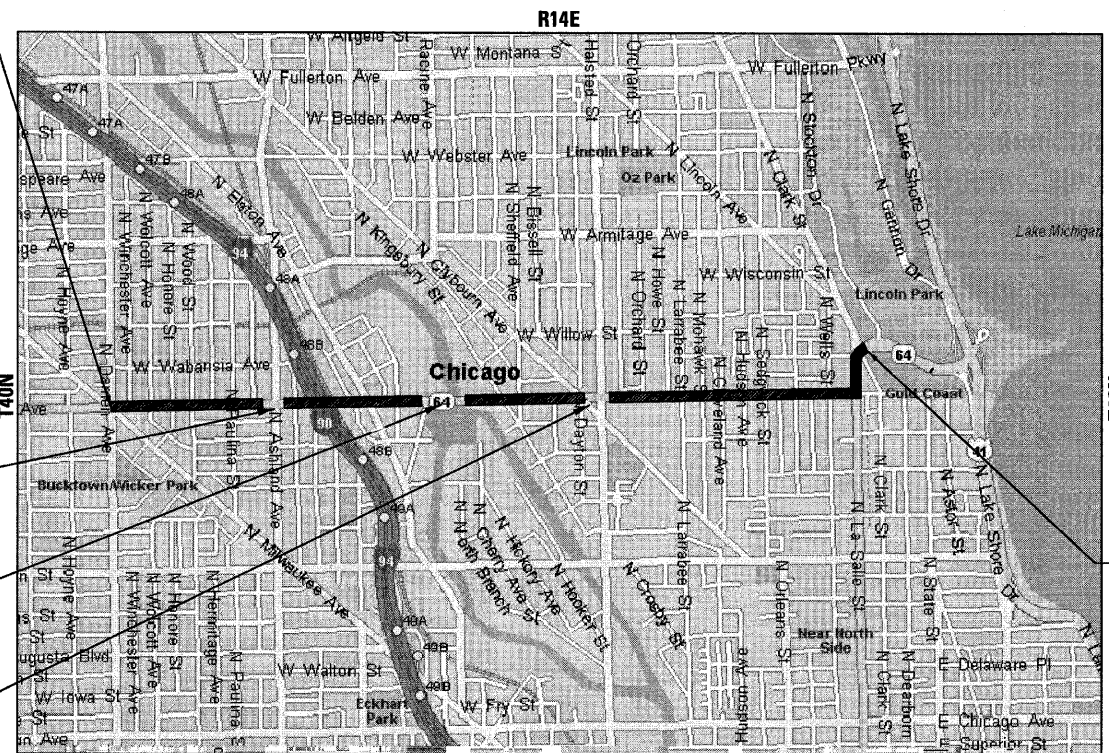
FULL SIZE PLANS HAVE BEEN PREPARED USING STANDARD ENGINEERING SCALES. REDUCED SIZED PLANS WILL NOT CONFORM TO STANDARD SCALES. IN MAKING MEASUREMENTS ON REDUCED PLANS, THE ABOVE SCALES MAY BE USED.

PROJECT BEGINS
STA. 101 + 86

PAVING OMISSION:
STA 127 + 22 TO
STA 128 + 59

PAVING OMISSION:
STA 154 + 25 TO
STA 160 + 23

PAVING OMISSION:
STA 177 + 96 TO
STA 181 + 17



PROJECT ENDS
STA. 229 + 96



LOCATION OF SECTION INDICATED THIS: [Symbol]

STATE OF ILLINOIS
DEPARTMENT OF TRANSPORTATION
DIVISION OF HIGHWAYS

SUBMITTED JANUARY 31, 20 11
Diane M. O'Keefe
DEPUTY DIRECTOR OF HIGHWAYS, REGION ENGINEER

MARCH 05 20 11
Scott E. Stettin
ENGINEER OF DESIGN AND ENVIRONMENT

MARCH 05 20 11
Christine M. Reed
DIRECTOR OF HIGHWAYS, CHIEF ENGINEER

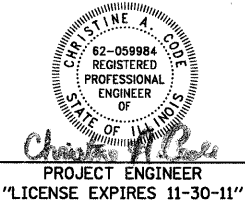
PRINTED BY THE AUTHORITY
OF THE STATE OF ILLINOIS



CONTACT JULIE AT 811 OR 800-892-0123
WITH THE FOLLOWING:
COUNTY = COOK
CITY-TOWNSHIP = LAKEVIEW
SEC. & 1/4 SEC. NO. = 31, 32, 33
48 HOURS (2 working days) BEFORE YOU DIG

DISTRICT ONE -
PROJECT MANAGER: KEN ENG (847) 705-4247
PROJECT ENGINEER: ROBERT LENZINI (815) 459-1260
CONTRACT NO. 60N19

SCALE: NTS
LAKEVIEW TOWNSHIP
GROSS LENGTH OF IMPROVEMENT = 12,810 LF OR 2.426 MILES
NET LENGTH OF IMPROVEMENT = 11,754 LF OR 2.226 MILES



Rev. 4-18-11

B&W PROJECT NO.: 100153

COPYRIGHT © 2003 BY BAXTER & WOODMAN, INC. ALL RIGHTS RESERVED. ILLINOIS PROFESSIONAL ENGINEERING BOARD REGISTRATION NO. 62-059984. EXPIRES 11/30/11. 565620

GENERAL NOTES

1. ALL CONSTRUCTION SHALL BE DONE IN ACCORDANCE WITH THE DETAILS IN THE PLANS, THE SPECIAL PROVISIONS INCLUDED IN THE CONTRACT DOCUMENTS, AND THE LATEST EDITION OF THE FOLLOWING STATE OF ILLINOIS SPECIFICATIONS: "THE STANDARD SPECIFICATIONS FOR ROAD AND BRIDGE CONSTRUCTION" (REFERRED TO AS THE "STANDARD SPECIFICATIONS"), THE "SUPPLEMENTAL SPECIFICATIONS AND RECURRING SPECIAL PROVISIONS", THE "MANUAL ON UNIFORM TRAFFIC CONTROL DEVICES FOR STREETS AND HIGHWAYS" AND THE "MANUAL OF TEST PROCEDURES FOR MATERIALS".
2. BEFORE STARTING ANY EXCAVATION, THE CONTRACTOR SHALL CALL "DIGGER" CHICAGO UTILITY AREA NETWORK WITHIN THE CITY OF CHICAGO AT (312) 744-7000 FOR FIELD LOCATIONS OF BURIED ELECTRIC, TELEPHONE, AND GAS FACILITIES. 48 HOUR NOTIFICATION REQUIRED.
3. THE CONTRACTOR WILL NOT BE ALLOWED TO SET UP A YARD OR FIELD OFFICE ON STATE PROPERTY WITHOUT THE WRITTEN PERMISSION OF THE DEPARTMENT.
4. THE CONTRACTOR SHALL COORDINATE ALL CONSTRUCTION ACTIVITIES WITH UTILITY COMPANIES AND THE CITY OF CHICAGO.
5. BUTT JOINTS WILL BE INSTALLED AT THE ENDS OF ALL RESURFACING (WHERE RESURFACING MEETS EXISTING PAVEMENT), IN ACCORDANCE WITH THE "BUTT JOINT AND HMA TAPER DETAILS" SHEET INCLUDED IN THE PLANS UNLESS OTHERWISE SPECIFIED.
6. WHEN MILLED PAVEMENT IS OPEN TO TRAFFIC, THE MAXIMUM GRADE DIFFERENTIAL BETWEEN PASSES OF THE MILLING MACHINE SHALL NOT EXCEED 1 1/2 INCHES WHERE THE SPEED LIMIT IS 45 MPH OR LESS AND 1 INCH WHERE THE SPEED LIMIT IS GREATER THAN 45 MPH. WITH WRITTEN APPROVAL FROM THE ENGINEER, A MAXIMUM GRADE DIFFERENTIAL OF 3 INCHES MAY BE ALLOWED IF THE EDGE OF MILLING IS SLOPED AT A MINIMUM OF 1:3 (V:H).
7. THE RESIDENT ENGINEER SHALL CONTACT WALLY CZARNY, THE AREA TRAFFIC FIELD ENGINEER, AT (847) 715-8419 A MINIMUM OF TWO (2) WEEKS PRIOR TO INSTALLATION OF PERMANENT PAVEMENT MARKINGS. THE RESIDENT ENGINEER IS RESPONSIBLE FOR RECORDING EXISTING PAVEMENT MARKINGS PRIOR TO HMA SURFACE REMOVAL.
8. THE CONTRACTOR SHALL CONTACT THE DISTRICT ONE ARTERIAL TRAFFIC CONTROL SUPERVISOR AT (847) 705-4470 A MINIMUM OF 72 HOURS PRIOR TO INSTALLATION OF TEMPORARY TRAFFIC CONTROL DEVICES.
9. ALL PAVEMENT PATCHING LOCATIONS AND COMBINATION CONCRETE CURB AND GUTTER REMOVAL AND REPLACEMENT WILL BE DETERMINED IN THE FIELD BY THE RESIDENT ENGINEER.
10. BEFORE BEGINNING WORK, THE CONTRACTOR SHALL RETAIN AND RECORD FOR FUTURE REFERENCE, ALL EXISTING PAVEMENT MARKING LINES AND RAISED REFLECTIVE PAVEMENT MARKERS IN ORDER THAT THESE LOCATIONS CAN BE RE-ESTABLISHED FOR STRIPING. EXACT LOCATIONS OF ALL PAVEMENT MARKINGS SHALL BE AS DIRECTED BY THE RESIDENT ENGINEER.
11. THE CONTRACTOR SHALL BE RESPONSIBLE FOR VERIFYING ALL DIMENSIONS AND CONDITIONS EXISTING IN THE FIELD PRIOR TO CONSTRUCTION AND ORDERING MATERIALS.
12. THE CONTRACTOR SHALL BE REQUIRED TO PROVIDE ACCESS TO ABUTTING PROPERTY AT ALL TIMES DURING THE CONSTRUCTION OF THIS PROJECT.
13. PAVEMENT REPLACEMENT AROUND FRAMES AND CRATES OR LIDS WHERE DRAINAGE, SANITARY, WATER MAIN OR ELECTRICAL STRUCTURES ARE ADJUSTED OR RECONSTRUCTED, SHALL BE WITH CLASS SI CONCRETE.
14. PAY ITEM X5539700-STORM SEWERS TO BE CLEANED-SHALL ONLY BE UTILIZED TO CLEAN STORM SEWER LATERAL PIPES BETWEEN INLETS OR CATCH BASINS AND THE MAIN SEWER ONLY AT THE STRUCTURES SHOWN TO BE CLEANED AS INDICATED. SEE ROADWAY PLANS FOR LOCATIONS.
15. ANY TEMPORARY PAVEMENT MARKINGS NOT NEEDED AT THE TIME OF CONSTRUCTION SHOULD BE DELETED FROM THE CONTRACT.
16. PERMITS FROM THE CITY OF CHICAGO ARE REQUIRED BY THE CONTRACTOR FOR ALL UNDERGROUND STORM, SANITARY OR COMBINED STORM SEWER CONSTRUCTION, AND FOR ALL WORK INVOLVED WITH THE ADJUSTMENT OF SEWER STRUCTURES.

GENERAL NOTES (CONT)

17. IT IS THE CONTRACTOR'S SOLE RESPONSIBILITY TO COORDINATE WITH ALL RAILROADS WHENEVER CONSTRUCTION ACTIVITY IS WITHIN 25 FEET OF THE RAILROAD ROW. THE CONTRACTOR SHALL RETAIN FLAGMEN EMPLOYED AND DESIGNATED BY THE RAILROAD TO MONITOR ON-COMING TRAIN TRAFFIC, AND ADVISE CONTRACTOR PERSONNEL WHEN ACTIVITY ON OR NEAR THE RAILROAD RIGHT-OF-WAY MAY PROCEED. THIS ITEM WILL BE PAID FOR ACCORDING TO ARTICLE 107.12 AND WILL BE REIMBURSED ACCORDING TO ARTICLE 109.05.
18. THE CONTRACTOR SHALL CONTACT PAUL LABUZ, THE CHICAGO DEPARTMENT OF TRANSPORTATION PROJECT MANAGER, AT (312) 744-3831 PRIOR TO THE RAILROAD TRACK REMOVAL ON KINGSBURY STREET TO COORDINATE REMOVAL WITH THE RECONSTRUCTION PROJECT ON KINGSBURY STREET.
19. THE CONTRACTOR SHALL CONTACT JOE VOLDRICH, THE CHICAGO DEPARTMENT OF TRANSPORTATION PROJECT MANAGER, AT (312) 744-3831 PRIOR TO RESURFACING OF LASALLE DRIVE TO COORDINATE WITH THE TRAFFIC STAGING ON THE LASALLE DRIVE RECONSTRUCTION PROJECT BETWEEN CLARK STREET AND LAKE SHORE DRIVE.

1

INDEX OF SHEETS

SHEET NO.	DESCRIPTION
1	COVER SHEET
2	INDEX OF SHEETS, HIGHWAY STANDARDS & GENERAL NOTES
3	SUMMARY OF QUANTITIES
4 - 5	TYPICAL SECTIONS
6 - 11	ROADWAY PLANS
12 - 17	PAVEMENT MARKING PLANS
17A	NORTH AVENUE AT ORCHARD STREET MEDIAN REFUGE ISLAND DETAIL
18	DETAILS FOR FRAMES AND LIDS ADJUSTMENT WITH MILLING (BD-8)
19	PAVEMENT PATCHING FOR HMA SURFACED PAVEMENT (BD-22)
20	CURB OR CURB AND GUTTER REMOVAL AND REPLACEMENT (BD-24)
21	BUTT JOINT AND HMA TAPER DETAILS (BD-32)
22	CITY OF CHICAGO CATCH BASIN, INLET AND MANHOLE DETAILS (BD-47)
23	TRAFFIC CONTROL AND PROTECTION FOR SIDE ROADS, INTERSECTIONS, AND DRIVEWAYS (TC-10)
24	TRAFFIC CONTROL AND PROTECTION OF TURN BAYS (TO REMAIN OPEN TO TRAFFIC) (TC-14)
25	PAVEMENT MARKING LETTERS AND SYMBOLS FOR TRAFFIC STAGING (TC-16)
26	ARTERIAL ROAD INFORMATION SIGNING (TC-22)
27 - 28	CITY OF CHICAGO TYPICAL PAVEMENT MARKINGS (TC-24)
29	DISTRICT 1 DETECTOR LOOP INSTALLATION DETAILS FOR ROADWAY RESURFACING (TS-07)

COMMITMENTS

THERE ARE NO COMMITMENTS FOR THIS PROJECT.

HIGHWAY STANDARDS

STANDARD NO.	DESCRIPTION
000001-06	STANDARD SYMBOLS, ABBREVIATIONS, AND PATTERNS
442201-03	CLASS C AND D PATCHES
604001-03	FRAME AND LIDS, TYPE 1
606001-04	CONCRETE CURB TYPE B AND COMBINATION CONCRETE CURB AND GUTTER
701301-04	LANE CLOSURE, 2L, 2W, SHORT TIME OPERATIONS
701311-03	LANE CLOSURE, 2L, 2W MOVING OPERATIONS-DAY ONLY
701427	LANE CLOSURE, MULTILANE, INTERMETTENT OR MOVING OPER., FOR SPEEDS ≤ 40 MPH
701501-06	URBAN LANE CLOSURE, 2L, 2W, UNDIVIDED
701601-07	URBAN LANE CLOSURE, MULTILANE, 1W OR 2W WITH NONTRAVERSABLE MEDIAN
701602-05	URBAN LANE CLOSURE, MULTILANE, 2W WITH BIDIRECTIONAL LEFT TURN LANE
701606-07	URBAN LANE CLOSURE, MULTILANE, 2W WITH MOUNTABLE MEDIAN
701701-07	URBAN LANE CLOSURE, MULTILANE INTERSECTION
701801-04	LANE CLOSURE MULTILANE 1W OR 2W CROSSWALK OR SIDEWALK CLOSURE
701901-01	TRAFFIC CONTROL DEVICES
424001-05	CURB RAMP FOR SIDEWALKS
606301-04	PC CONCRETE ISLANDS AND MEDIANS
720001-01	SIGN PANEL MOUNTING DETAILS
720006-02	SIGN PANEL ERECTION DETAILS
720011-01	METAL POST FOR SIGNS, MARKERS & DELINEATORS
729001-01	APPLICATION FOR TYPES A & B METAL POSTS (FOR SIGNS & MARKERS)

1

4-14-11

COPYRIGHT © 2011 BY BAXTER & WOODMAN, INC.
 STATE OF ILLINOIS PROFESSIONAL DESIGN FIRM
 LICENSE NO. - 384-00121 - EXPIRES 7/30/2011
 I:\Matters\11001\110013-01\DRAWING\40-Design\A-10-13\CAD-DRAWING\10-13\10-13-010103-01.dwg
 7/27/2011 4:23:08 PM
 User: baxter\j...
 I:\Matters\11001\110013-01\DRAWING\40-Design\A-10-13\CAD-DRAWING\10-13\10-13-010103-01.dwg



DESIGNED	- CAC	REVISED	- PER IDOT 2-3-11
DRAWN	- BCD	REVISED	- PER IDOT 2-18-11
CHECKED	- RWL	REVISED	- ADDENDUM 1-4/13/11
DATE	- 12-17-10	FILE	- 100153-wol3-gennotes.shd

**STATE OF ILLINOIS
DEPARTMENT OF TRANSPORTATION**

**NORTH AVENUE
MILWAUKEE AVENUE TO CLARK STREET
INDEX OF SHEETS, HIGHWAY STANDARDS AND GENERAL NOTES**

F.A.P. RTE.	SECTION	COUNTY	TOTAL SHEETS	SHEET NO.
307	2010-140-R5	COOK	29	2
FED. ROAD DIST. NO. 1 ILLINOIS FED. AID PROJECT			CONTRACT NO. 60N19	

SCALE: NONE STA. TO STA.

80% FED.
20% STATE

SUMMARY OF QUANTITIES			CONSTRUCTION TYPE CODE	
CODE	ITEM DESCRIPTION	UNIT	TOTAL QUANTITY	0005 QUANTITY
40600200	BITUMINOUS MATERIALS (PRIME COAT)	TON	62	62
40600300	AGGREGATE (PRIME COAT)	TON	488	488
40600400	MIXTURE FOR CRACKS, JOINTS, AND FLANGWAYS	TON	18	18
40600895	CONSTRUCTING TEST STRIP	EACH	2	2
40600982	HOT-MIX ASPHALT SURFACE REMOVAL - BUTT JOINT	SO YD	1,401	1,401
40601005	HOT-MIX ASPHALT REPLACEMENT OVER PATCHES	TON	1,034	1,034
40603595	POLYMERIZED HOT-MIX ASPHALT SURFACE COURSE, MIX "F", N90	TON	8,175	8,175
44000159	HOT-MIX ASPHALT SURFACE REMOVAL, 2 1/2"	SO YD	81,235	81,235
Z0004562	COMBINATION CONCRETE CURB AND GUTTER REMOVAL AND REPLACEMENT	FOOT	3,461	3,461
44002216	HOT-MIX ASPHALT REMOVAL OVER PATCHES, 4"	SO YD	4,494	4,494
44201761	CLASS D PATCHES, TYPE I, 10 INCH	SO YD	48	48
44201765	CLASS D PATCHES, TYPE II, 10 INCH	SO YD	504	504
44201769	CLASS D PATCHES, TYPE III, 10 INCH	SO YD	728	728
44201771	CLASS D PATCHES, TYPE IV, 10 INCH	SO YD	2,178	2,178
60300305	FRAMES AND LIDS TO BE ADJUSTED	EACH	28	28
60406000	FRAMES AND LIDS, TYPE 1, OPEN LID	EACH	1	1
67000400	ENGINEER'S FIELD OFFICE, TYPE A	CAL MO	6	6
67100100	MOBILIZATION	L SUM	1	1
70102625	TRAFFIC CONTROL AND PROTECTION, STANDARD 701606	L SUM	1	1
70102630	TRAFFIC CONTROL AND PROTECTION, STANDARD 701601	L SUM	1	1
70102632	TRAFFIC CONTROL AND PROTECTION, STANDARD 701602	L SUM	1	1
70102635	TRAFFIC CONTROL AND PROTECTION, STANDARD 701701	L SUM	1	1
70300100	SHORT TERM PAVEMENT MARKING	FOOT	24,600	24,600
70300210	TEMPORARY PAVEMENT MARKING LETTERS AND SYMBOLS	SO FT	4,374	4,374
70300220	TEMPORARY PAVEMENT MARKING - LINE 4"	FOOT	43,628	43,628
70300240	TEMPORARY PAVEMENT MARKING - LINE 6"	FOOT	19,828	19,828
70300250	TEMPORARY PAVEMENT MARKING - LINE 8"	FOOT	4,104	4,104
70300260	TEMPORARY PAVEMENT MARKING - LINE 12"	FOOT	2,044	2,044
70300280	TEMPORARY PAVEMENT MARKING - LINE 24"	FOOT	3,764	3,764
70301000	WORK ZONE PAVEMENT MARKING REMOVAL	SO FT	1,640	1,640
78000100	THERMOPLASTIC PAVEMENT MARKING - LETTERS AND SYMBOLS	SO FT	2,127	2,127
78000200	THERMOPLASTIC PAVEMENT MARKING - LINE 4"	FOOT	24,356	24,356
78000400	THERMOPLASTIC PAVEMENT MARKING - LINE 6"	FOOT	9,840	9,840
78000500	THERMOPLASTIC PAVEMENT MARKING - LINE 8"	FOOT	3,012	3,012
78000600	THERMOPLASTIC PAVEMENT MARKING - LINE 12"	FOOT	1,086	1,086
78000650	THERMOPLASTIC PAVEMENT MARKING - LINE 24"	FOOT	1,882	1,882
78003100	PREFORMED PLASTIC PAVEMENT MARKING, TYPE B - LETTERS AND SYMBOLS	SO FT	183	183

* INDICATES SPECIALTY ITEM

80% FED.
20% STATE

SUMMARY OF QUANTITIES			CONSTRUCTION TYPE CODE	
CODE	ITEM DESCRIPTION	UNIT	TOTAL QUANTITY	0005 QUANTITY
78003180	PREFORMED PLASTIC PAVEMENT MARKING, TYPE B - LINE 24"	FOOT	48	48
88600600	DETECTOR LOOP REPLACEMENT	FOOT	1,820	1,820
Z0018500	DRAINAGE STRUCTURE TO BE CLEANED	EACH	104	104
Z0076600	TRAINEES	— HOUR —	— 500 —	— 500 —
Z0048665	RAILROAD PROTECTIVE LIABILITY INSURANCE	L SUM	1	1
Z0030050	TEMPORARY INFORMATION SIGNING	SO FT	52	52
X4060826	POLYMERIZED LEVELING BINDER (MACHINE METHOD), IL 4.75, N50	TON	3,504	3,504
X5539700	STORM SEWERS TO BE CLEANED	FOOT	4,056	4,056
X6030310	FRAMES AND LIDS TO BE ADJUSTED (SPECIAL)	EACH	249	249
XX005972	STAMPED ASPHALT CROSSWALK	SO YD	498	498
Z0048900	RAILROAD TRACK REMOVAL	FOOT	125	125
35101600	AGGREGATE BASE COURSE, TYPE B, 4"	SQ YD	67	67
42400200	PORTLAND CEMENT CONCRETE SIDEWALK 5 INCH	SQ FT	596	596
42400800	DETECTABLE WARNINGS	SQ FT	108	108
44000100	PAVEMENT REMOVAL	SQ YD	684	684
44000600	SIDEWALK REMOVAL	SQ FT	596	596
60619121	CONCRETE MEDIAN, TYPE SB-6	SQ FT	684	684
* 72000100	SIGN PANEL - TYPE 1	SQ FT	92	92
* 72400310	REMOVE SIGN PANEL - TYPE 1	SQ FT	22	22
* 72400710	RELOCATE SIGN PANEL - TYPE 1	SQ FT	11	11
* 72900100	METAL POST - TYPE A	FOOT	100	100
* 72900200	METAL POST - TYPE B	FOOT	40	40

* INDICATES SPECIALTY ITEM
△ = Non-participating

Rev. 4-15-11

COPYRIGHT © 2011 BY BAXTER & WOODMAN, INC.
 STATE OF ILLINOIS - PROFESSIONAL DESIGN FIRM
 LICENSE NO. 022-001773-0001
 12/2010
 PROJECT NO. 100153-W13-SQ-001
 DATE: 12-17-10



DESIGNED - CAC	REVISED - PER IDOT 2-3-11
DRAWN - BCD	REVISED -
CHECKED - RWL	REVISED -
DATE - 12-17-10	FILE - 100153-w13-soq.shp

STATE OF ILLINOIS
DEPARTMENT OF TRANSPORTATION

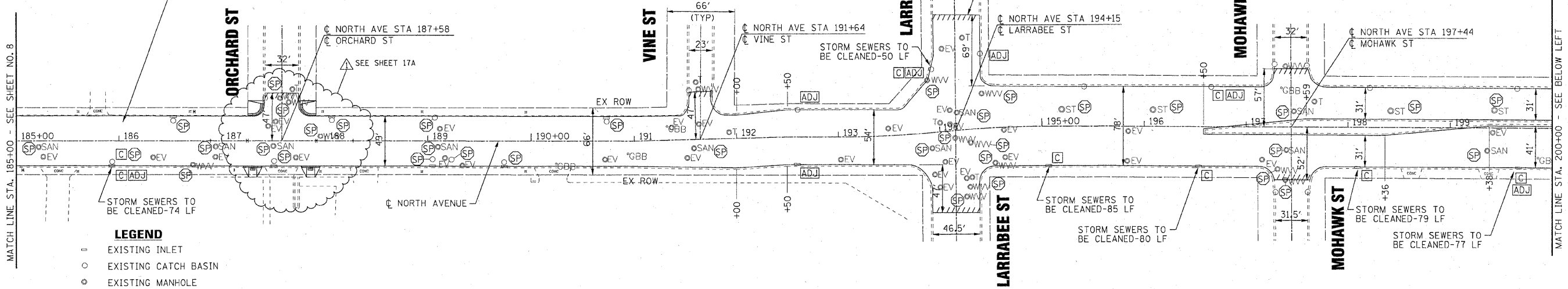
NORTH AVENUE
MILWAUKEE AVENUE TO CLARK STREET
SUMMARY OF QUANTITIES

F.A.P. RTE. 307	SECTION 2010-140-RS	COUNTY COOK	TOTAL SHEETS 29	SHEET NO. 3
FED. ROAD DIST. NO. 1 ILLINOIS FED. AID PROJECT			CONTRACT NO. 60N19	

SCALE: NONE

STA. TO STA.

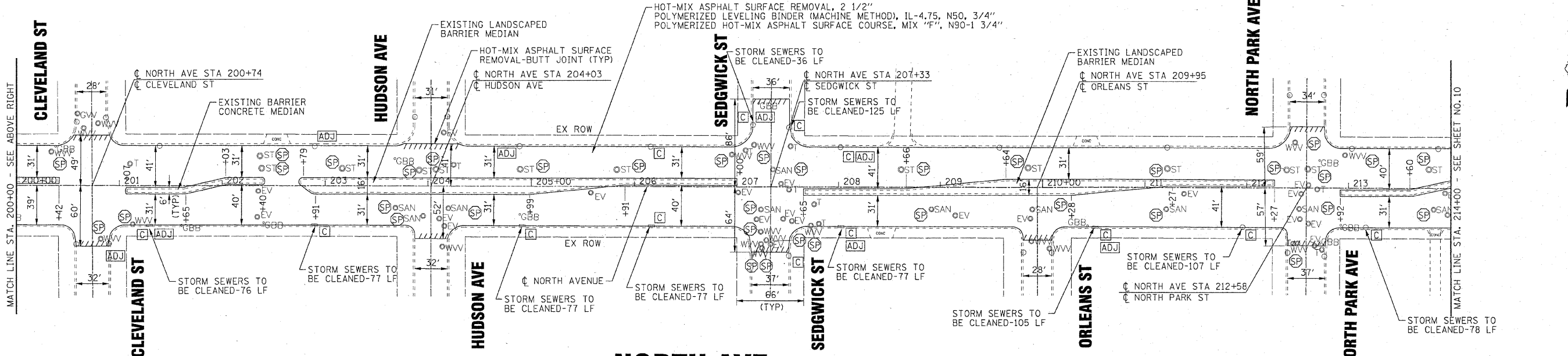
HOT-MIX ASPHALT SURFACE REMOVAL, 2 1/2"
 POLYMERIZED LEVELING BINDER (MACHINE METHOD), IL-4.75, N50, 3/4"
 POLYMERIZED HOT-MIX ASPHALT SURFACE COURSE, MIX "F", N90-1 3/4"



- LEGEND**
- EXISTING INLET
 - EXISTING CATCH BASIN
 - EXISTING MANHOLE
 - GVV GAS VALVE VAULT (ADJUSTMENTS PERFORMED BY OTHERS)
 - GBB GAS B-BOX (ADJUSTMENTS PERFORMED BY OTHERS)
 - EV ELECTRICAL VAULT (ADJUSTMENTS PERFORMED BY OTHERS)
 - T TELEPHONE (ADJUSTMENTS PERFORMED BY OTHERS)
 - WVV WATER VALVE VAULT (CITY OF CHICAGO)
 - SAN SANITARY (CITY OF CHICAGO)
 - ST STORM (CITY OF CHICAGO)
 - ⊠ FRAMES AND LIDS TO BE ADJUSTED (SPECIAL)
 - ⊠ DRAINAGE STRUCTURES TO BE CLEANED
 - ⊠ FRAMES AND LIDS TO BE ADJUSTED

NORTH AVE

- NOTES:**
1. SAW CUTTING PRIOR TO ANY REMOVAL ITEMS NOTED ON THE PLANS OR DIRECTED BY THE ENGINEER SHALL BE CONSIDERED INCLUDED IN THE COST OF THE ITEMS BEING REMOVED.
 2. ALL PAVEMENT PATCHING LOCATIONS WILL BE DETERMINED BY THE RESIDENT ENGINEER.
 3. ALL COMBINATION CONCRETE CURB AND GUTTER REMOVAL AND REPLACEMENT WILL BE DETERMINED BY THE RESIDENT ENGINEER.
 4. THE CONTRACTOR SHALL USE CARE IN REMOVING OR EXCAVATING NEAR ALL EXISTING ITEMS WHICH WILL REMAIN. ANY DAMAGE DONE TO EXISTING ITEMS BY THE CONTRACTOR SHALL BE REPAIRED AT THE CONTRACTOR'S EXPENSE.
 5. PAY ITEM X5539700 - STORM SEWERS TO BE CLEANED - SHALL ONLY BE UTILIZED TO CLEAN STORM SEWER LATERAL PIPES BETWEEN INLETS OR CATCH BASINS AND THE MAIN SEWER ONLY AT THE STRUCTURES SHOWN TO BE CLEANED AS INDICATED BY ⊠.



NORTH AVE

4-14-11

COPYRIGHT © 2011 BY BAXTER & WOODMAN, INC.
 STATE OF ILLINOIS - PROFESSIONAL DESIGN FIRM
 LICENSE NO. 184-00181 - EXPIRES 4/30/2011
 4/14/2011 4:45:55 PM
 I:\Makers\100153-01\WORK\4-Design\WID-13-ADD-SURVEY\DRAWINGS\DOCS\100153-wol3-Plan4.dwg



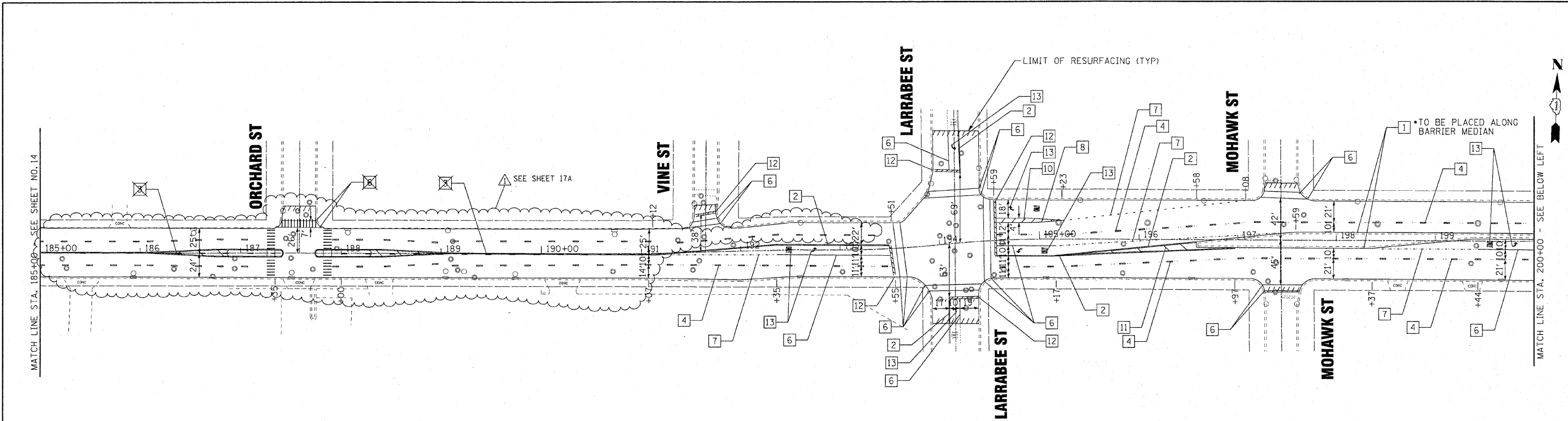
DESIGNED	CAC	REVISED	PER IDOT 2-3-11
DRAWN	BCD	REVISED	PER CDOT 2-18-11
CHECKED	RWL	REVISED	ADDENDUM 1-4/13/11
DATE	12-17-10	FILE	100153-wol3-Plan4.dwg

STATE OF ILLINOIS
 DEPARTMENT OF TRANSPORTATION

**NORTH AVENUE
 MILWAUKEE AVENUE TO CLARK STREET
 ROADWAY PLAN**

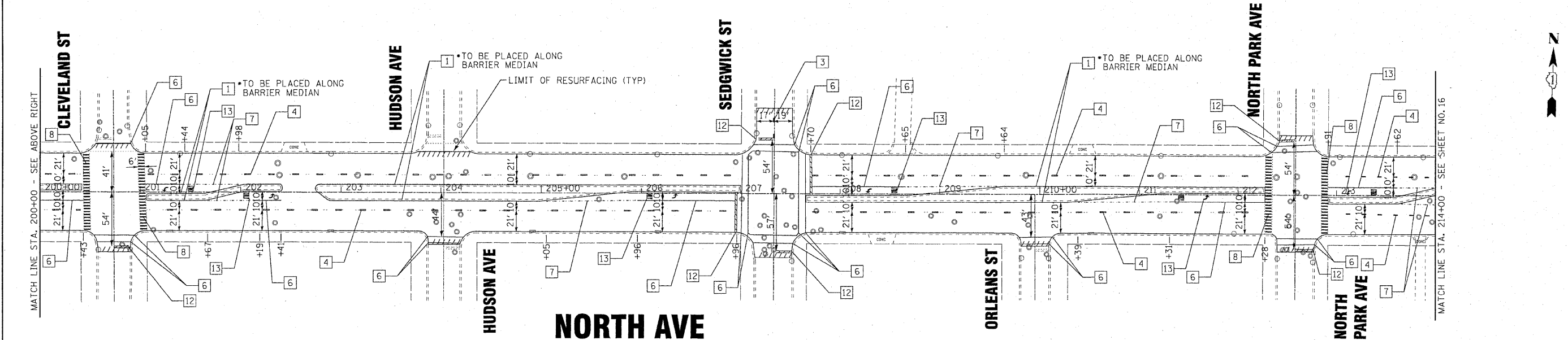
SCALE: 1" = 50'
 STA. 185+00 TO STA. 214+00

F.A.P. RTE.	SECTION	COUNTY	TOTAL SHEETS	SHEET NO.
307	2010-140-RS	COOK	29	9
CONTRACT NO. 60N19				
FED. ROAD DIST. NO. 1 [ILLINOIS] FED. AID PROJECT				



NORTH AVE

- NOTES:
1. MATCH EXISTING PAVEMENT MARKINGS AT THE PROJECT AND OMISSION LIMITS.
 2. ALL DAMAGE TO EXISTING PAVEMENT MARKINGS OUTSIDE THE REMOVAL LINE SHOWN ON THE PLANS SHALL BE REPLACED AT THE CONTRACTOR'S EXPENSE.
 3. FOR CROSSWALK MARKING DETAILS, SEE DISTRICT DETAIL TC-24 ON SHEET NO. 27.



NORTH AVE

LEGEND	
1	THERMOPLASTIC PAVEMENT MARKING - LINE 4" (YELLOW SOLID LINE)
2	THERMOPLASTIC PAVEMENT MARKING - LINE 4" (DOUBLE YELLOW SOLID LINE)
3	THERMOPLASTIC PAVEMENT MARKING - LINE 4" (YELLOW - 6' DASH, 18' SKIP)
4	THERMOPLASTIC PAVEMENT MARKING - LINE 4" (WHITE LANE LINE - 6' DASH, 18' SKIP)
5	THERMOPLASTIC PAVEMENT MARKING - LINE 4" (WHITE SOLID LINE)
6	THERMOPLASTIC PAVEMENT MARKING - LINE 6" (WHITE SOLID LINE)
7	THERMOPLASTIC PAVEMENT MARKING - LINE 6" (WHITE LANE LINE - 2' DASH, 6' SKIP)
8	THERMOPLASTIC PAVEMENT MARKING - LINE 8" (WHITE SOLID LINE)
9	THERMOPLASTIC PAVEMENT MARKING - LINE 12" (WHITE SOLID LINE)
10	THERMOPLASTIC PAVEMENT MARKING - LINE 12" (WHITE DIAGONAL LINE)
11	THERMOPLASTIC PAVEMENT MARKING - LINE 12" (YELLOW DIAGONAL LINE) - 20' C-C
12	THERMOPLASTIC PAVEMENT MARKING - LINE 24" (WHITE STOP BAR)
13	THERMOPLASTIC PAVEMENT MARKING - LETTERS AND SYMBOLS (TYP)
14	PERFORMED PLASTIC PAVEMENT MARKING, TYPE B-LETTERS AND SYMBOLS
15	PERFORMED PLASTIC PAVEMENT MARKING, TYPE B-LINE 24"



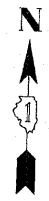
DESIGNED - CAC	REVISED - PER IDOT 2-3-11
DRAWN - CJC	REVISED - PER IDOT 2-18-11
CHECKED - RWL	REVISED - ADDENDUM 1-4/13/11
DATE - 12-17-10	FILE - 100153-wc13-PM4.sh+

**STATE OF ILLINOIS
DEPARTMENT OF TRANSPORTATION**

**NORTH AVENUE
MILWAUKEE AVENUE TO CLARK STREET
PAVEMENT MARKING PLAN**

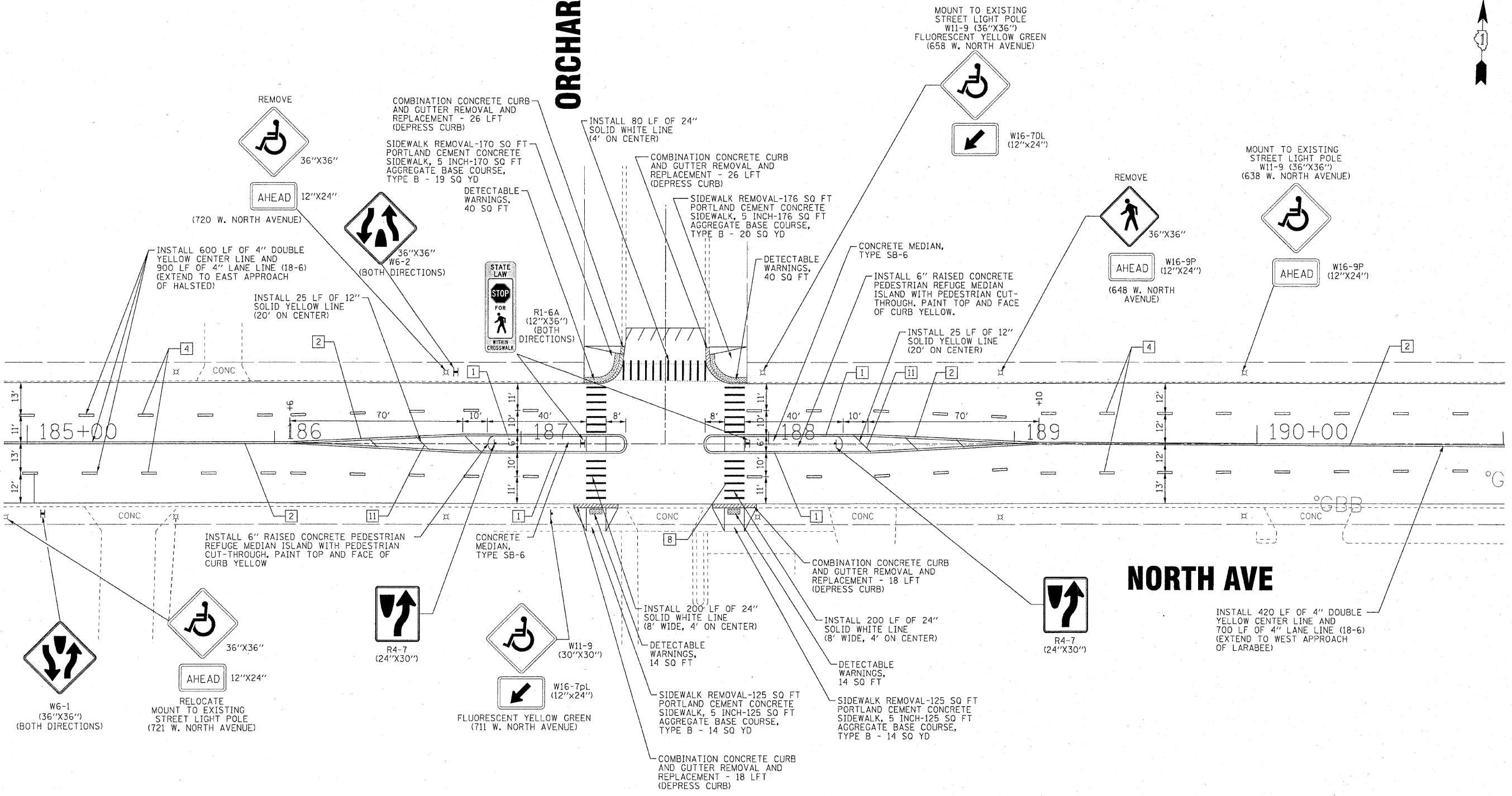
F.A.P. RTE.	SECTION	COUNTY	TOTAL SHEETS	SHEET NO.
307	2010-140-RS	COOK	29	15
CONTRACT NO. 60N19				
FED. ROAD DIST. NO. 1 [ILLINOIS] FED. AID PROJECT				

COPYRIGHT © 2011 BY BARTER & WOODMAN, INC.
 STATE OF ILLINOIS - PROFESSIONAL DESIGN FIRM
 LICENSE NO. - 24-00101 - EXPIRES 4/30/2011
 4/4/2011 4:58:58 PM
 ...:\Projects\100153-wc13-PM4...
 I:\Projects\100153-wc13-PM4...
 I:\Projects\100153-wc13-PM4...
 I:\Projects\100153-wc13-PM4...



ORCHARD ST

NORTH AVE



LEGEND

- | | | |
|--|---|---|
| 1 THERMOPLASTIC PAVEMENT MARKING - LINE 4" (YELLOW SOLID LINE) | 6 THERMOPLASTIC PAVEMENT MARKING - LINE 6" (WHITE SOLID LINE) | 10 THERMOPLASTIC PAVEMENT MARKING - LINE 12" (WHITE DIAGONAL LINE) |
| 2 THERMOPLASTIC PAVEMENT MARKING - LINE 4" (DOUBLE YELLOW SOLID LINE) | 7 THERMOPLASTIC PAVEMENT MARKING - LINE 6" (WHITE LANE LINE - 2' DASH, 6' SKIP) | 11 THERMOPLASTIC PAVEMENT MARKING - LINE 12" (YELLOW DIAGONAL LINE) - 20' C-C |
| 3 THERMOPLASTIC PAVEMENT MARKING - LINE 4" (YELLOW - 6' DASH, 18' SKIP) | 8 THERMOPLASTIC PAVEMENT MARKING - LINE 8" (WHITE SOLID LINE) | 12 THERMOPLASTIC PAVEMENT MARKING - LINE 24" (WHITE STOP BAR) |
| 4 THERMOPLASTIC PAVEMENT MARKING - LINE 4" (WHITE LANE LINE - 6' DASH, 18' SKIP) | 9 THERMOPLASTIC PAVEMENT MARKING - LINE 12" (WHITE SOLID LINE) | 13 THERMOPLASTIC PAVEMENT MARKING - LETTERS AND SYMBOLS (TYP) |
| 5 THERMOPLASTIC PAVEMENT MARKING - LINE 4" (WHITE SOLID LINE) | | 14 PREFORMED PLASTIC PAVEMENT MARKING, TYPE B-LETTERS AND SYMBOLS |
| | | 15 PREFORMED PLASTIC PAVEMENT MARKING, TYPE B-LINE 24" |

4-14-11



DESIGNED	CAC	REVISED	ADDENDUM 1-4/13/11
DRAWN	BCD	REVISED	
CHECKED	RWL	REVISED	
DATE	12-17-10	FILE	100153-wo13-0rchr.d.sht

STATE OF ILLINOIS
DEPARTMENT OF TRANSPORTATION

NORTH AVENUE
MILWAUKEE AVENUE TO CLARK STREET
NORTH AVE. AT ORCHARD ST. MEDIAN REFUGE ISLAND DETAIL

SCALE: 1" = 50'

STA. TO STA.

F.A.P. RTE.	SECTION	COUNTY	TOTAL SHEETS	SHEET NO.
307	2010-140-R5	COOK	29	17A
CONTRACT NO. 60N19			FED. ROAD DIST. NO. 1 [ILLINOIS] FED. AID PROJECT	

PROJECT & JOB BY: BAUER & BROSMAN, INC.
 STATE OF ILLINOIS - PROFESSIONAL DESIGN FIRM
 LICENSE NO. - 384-00201 - EXPIRES 4/30/2011
 4/14/2011 4:59:11 PM
 I:\Makeup\100153\100153-D1\VAR\VAR-04-Design\100153-00153-wo13-0rchr.d.sht