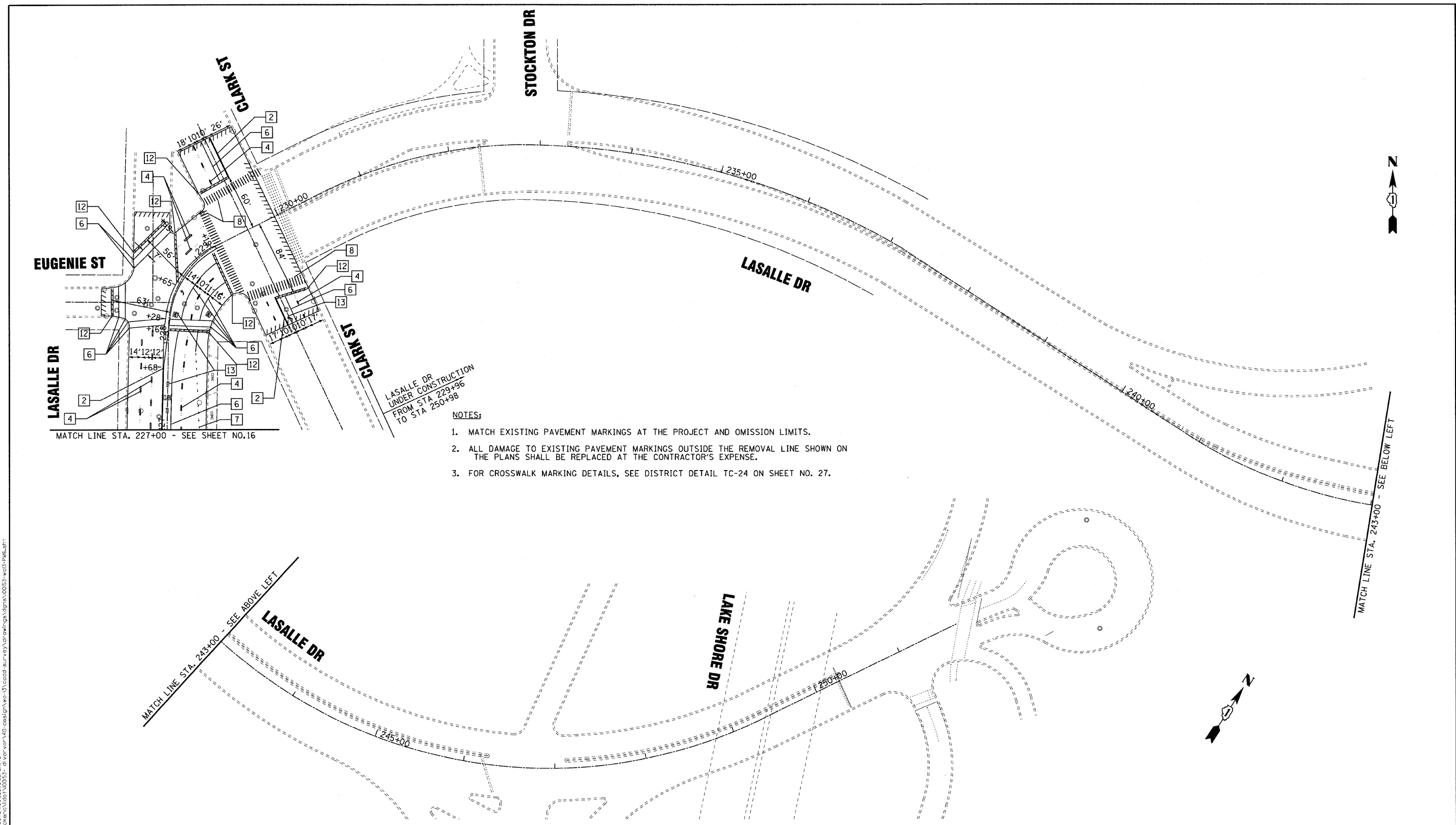


COPYRIGHT © 2011 BY BAXTER & WOODMAN, INC.
 STATE OF ILLINOIS - PROFESSIONAL DESIGN FIRM
 488 S. WOODMAN AVENUE, SUITE 200, CHICAGO, IL 60606
 312/467-1111
 3/29/2011
 I:\Projects\100153-wo13-PM6\Drawings\100153-wo13-PM6-SHT



- NOTES:**
1. MATCH EXISTING PAVEMENT MARKINGS AT THE PROJECT AND OMISSION LIMITS.
 2. ALL DAMAGE TO EXISTING PAVEMENT MARKINGS OUTSIDE THE REMOVAL LINE SHOWN ON THE PLANS SHALL BE REPLACED AT THE CONTRACTOR'S EXPENSE.
 3. FOR CROSSWALK MARKING DETAILS, SEE DISTRICT DETAIL TC-24 ON SHEET NO. 27.

LEGEND	
1	THERMOPLASTIC PAVEMENT MARKING - LINE 4" (YELLOW SOLID LINE)
2	THERMOPLASTIC PAVEMENT MARKING - LINE 4" (DOUBLE YELLOW SOLID LINE)
3	THERMOPLASTIC PAVEMENT MARKING - LINE 4" (YELLOW - 6' DASH, 18' SKIP)
4	THERMOPLASTIC PAVEMENT MARKING - LINE 4" (WHITE LANE LINE - 6' DASH, 18' SKIP)
5	THERMOPLASTIC PAVEMENT MARKING - LINE 4" (WHITE SOLID LINE)
6	THERMOPLASTIC PAVEMENT MARKING - LINE 6" (WHITE SOLID LINE)
7	THERMOPLASTIC PAVEMENT MARKING - LINE 6" (WHITE LANE LINE - 2' DASH, 6' SKIP)
8	THERMOPLASTIC PAVEMENT MARKING - LINE 8" (WHITE SOLID LINE)
9	THERMOPLASTIC PAVEMENT MARKING - LINE 12" (WHITE SOLID LINE)
10	THERMOPLASTIC PAVEMENT MARKING - LINE 12" (WHITE DIAGONAL LINE)
11	THERMOPLASTIC PAVEMENT MARKING - LINE 12" (YELLOW DIAGONAL LINE) - 20' C-C
12	THERMOPLASTIC PAVEMENT MARKING - LINE 24" (WHITE STOP BAR)
13	THERMOPLASTIC PAVEMENT MARKING - LETTERS AND SYMBOLS (TYP)
14	PREFORMED PLASTIC PAVEMENT MARKING, TYPE B-LETTERS AND SYMBOLS
15	PREFORMED PLASTIC PAVEMENT MARKING, TYPE B-LINE 24"



DESIGNED - CAC	REVISED - PER IDOT 2-3-11
DRAWN - CJC	REVISED - PER IDOT 2-18-11
CHECKED - RWL	REVISED -
DATE - 12-17-10	FILE - 100153-wo13-PM6.sht

STATE OF ILLINOIS
DEPARTMENT OF TRANSPORTATION

NORTH AVENUE
MILWAUKEE AVENUE TO CLARK STREET
PAVEMENT MARKING PLAN

SCALE: 1" = 50'

F.A.P. RTE.	SECTION	COUNTY	TOTAL SHEETS	SHEET NO.
307	2010-140-RS	COOK	29	17
FED. ROAD DIST. NO. 1 ILLINOIS FED. AID PROJECT				CONTRACT NO. 60N19