

STATE OF ILLINOIS
DEPARTMENT OF TRANSPORTATION
DIVISION OF HIGHWAYS

F.A.U. RTE.	SECTION	COUNTY	TOTAL SHEETS	SHEET NO.
307	2010-140-RS	COOK	29	1
FED. ROAD DIST. NO. 1		ILLINOIS		

D-91-268-11
CONTRACT NO. 60N19

FOR INDEX OF SHEETS, SEE SHEET NO. 2

IMPROVEMENT LOCATED WITHIN
THE CITY OF CHICAGO

PROPOSED HIGHWAY PLANS

FAP 307 (IL 64 / NORTH AVENUE)
MILWAUKEE AVENUE TO CLARK STREET

SECTION: 2010-140-RS

RESURFACING (3P)

PROJECT: NHF-0307(030)

COOK COUNTY

C-91-268-11

DESIGN DESIGNATION
MAJOR ARTERIAL

TRAFFIC DATA

IL ROUTE 64

2009 ADT = 34,900

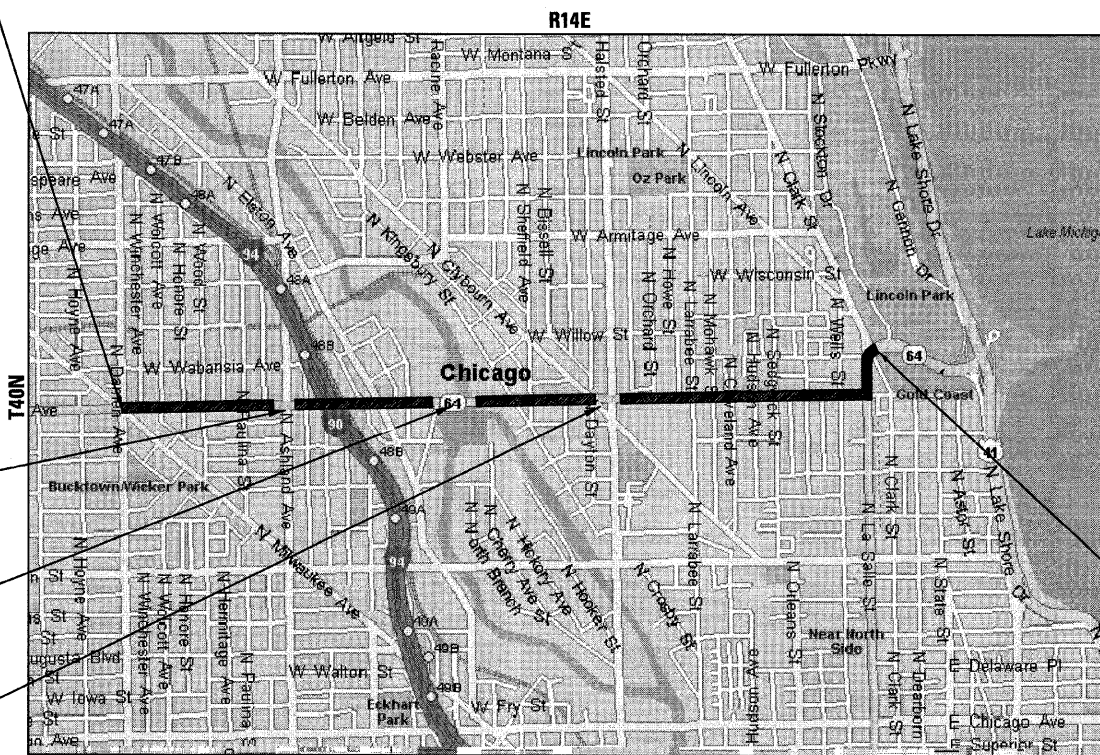
POSTED SPEED LIMIT = 30 MPH

PROJECT BEGINS
STA. 101 + 86

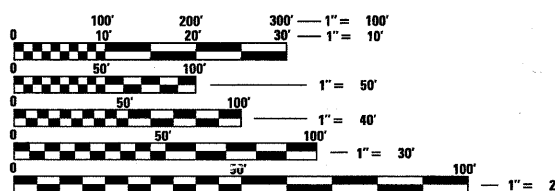
PAVING OMISSION:
STA 127 + 22 TO
STA 128 + 59

PAVING OMISSION:
STA 154 + 25 TO
STA 160 + 23

PAVING OMISSION:
STA 177 + 96 TO
STA 181 + 17



LOCATION OF SECTION INDICATED THUS: [thick black line]



FULL SIZE PLANS HAVE BEEN PREPARED USING STANDARD ENGINEERING SCALES. REDUCED SIZED PLANS WILL NOT CONFORM TO STANDARD SCALES. IN MAKING MEASUREMENTS ON REDUCED PLANS, THE ABOVE SCALES MAY BE USED.

PROJECT ENDS
STA. 229 + 96

STATE OF ILLINOIS
DEPARTMENT OF TRANSPORTATION
DIVISION OF HIGHWAYS

SUBMITTED JANUARY 31, 2011
Diana M. O'Keefe
DEPUTY DIRECTOR OF HIGHWAYS, REGION ENGINEER

March 25, 2011
Scott E. Stat RE
ENGINEER OF DESIGN AND ENVIRONMENT

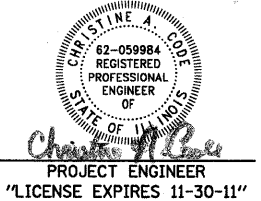
March 25, 2011
Christina M. Reed
DIRECTOR OF HIGHWAYS, CHIEF ENGINEER



CONTACT JULIE AT 811 OR 800-892-0123 WITH THE FOLLOWING:
COUNTY = COOK
CITY-TWNSHP. = LAKEVIEW
SEC. & 1/4 SEC. NO. = 31, 32, 33
48 HOURS (2 working days) BEFORE YOU DIG

SCALE: NTS
LAKEVIEW TOWNSHIP
GROSS LENGTH OF IMPROVEMENT = 12,810 LF OR 2.426 MILES
NET LENGTH OF IMPROVEMENT = 11,754 LF OR 2.226 MILES

DISTRICT ONE -
PROJECT MANAGER: KEN ENG (847) 705-4247
PROJECT ENGINEER: ROBERT LENZINI (815) 459-1260
CONTRACT NO. 60N19



PRINTED BY THE AUTHORITY
OF THE STATE OF ILLINOIS

B&W PROJECT NO.: 100153

COPYRIGHT © 2008 BY BAXTER & WOODMAN, INC.
 STATE OF ILLINOIS - PROFESSIONAL DESIGN FIRM
 LICENSE NO. - BF-007230 - SPRINGFIELD, ILLINOIS
 61801

GENERAL NOTES

1. ALL CONSTRUCTION SHALL BE DONE IN ACCORDANCE WITH THE DETAILS IN THE PLANS, THE SPECIAL PROVISIONS INCLUDED IN THE CONTRACT DOCUMENTS, AND THE LATEST EDITION OF THE FOLLOWING STATE OF ILLINOIS SPECIFICATIONS: "THE STANDARD SPECIFICATIONS FOR ROAD AND BRIDGE CONSTRUCTION" (REFERRED TO AS THE "STANDARD SPECIFICATIONS"), THE "SUPPLEMENTAL SPECIFICATIONS AND RECURRING SPECIAL PROVISIONS", THE "MANUAL ON UNIFORM TRAFFIC CONTROL DEVICES FOR STREETS AND HIGHWAYS" AND THE "MANUAL OF TEST PROCEDURES FOR MATERIALS".
2. BEFORE STARTING ANY EXCAVATION, THE CONTRACTOR SHALL CALL "DIGGER" CHICAGO UTILITY AREA NETWORK WITHIN THE CITY OF CHICAGO AT (312) 744-7000 FOR FIELD LOCATIONS OF BURIED ELECTRIC, TELEPHONE, AND GAS FACILITIES. 48 HOUR NOTIFICATION REQUIRED.
3. THE CONTRACTOR WILL NOT BE ALLOWED TO SET UP A YARD OR FIELD OFFICE ON STATE PROPERTY WITHOUT THE WRITTEN PERMISSION OF THE DEPARTMENT.
4. THE CONTRACTOR SHALL COORDINATE ALL CONSTRUCTION ACTIVITIES WITH UTILITY COMPANIES AND THE CITY OF CHICAGO.
5. BUTT JOINTS WILL BE INSTALLED AT THE ENDS OF ALL RESURFACING (WHERE RESURFACING MEETS EXISTING PAVEMENT), IN ACCORDANCE WITH THE "BUTT JOINT AND HMA TAPER DETAILS" SHEET INCLUDED IN THE PLANS UNLESS OTHERWISE SPECIFIED.
6. WHEN MILLED PAVEMENT IS OPEN TO TRAFFIC, THE MAXIMUM GRADE DIFFERENTIAL BETWEEN PASSES OF THE MILLING MACHINE SHALL NOT EXCEED 1 1/2 INCHES WHERE THE SPEED LIMIT IS 45 MPH OR LESS AND 1 INCH WHERE THE SPEED LIMIT IS GREATER THAN 45 MPH. WITH WRITTEN APPROVAL FROM THE ENGINEER, A MAXIMUM GRADE DIFFERENTIAL OF 3 INCHES MAY BE ALLOWED IF THE EDGE OF MILLING IS SLOPED AT A MINIMUM OF 1:3 (V:H).
7. THE RESIDENT ENGINEER SHALL CONTACT WALLY CZARNY, THE AREA TRAFFIC FIELD ENGINEER, AT (847) 715-8419 A MINIMUM OF TWO (2) WEEKS PRIOR TO INSTALLATION OF PERMANENT PAVEMENT MARKINGS. THE RESIDENT ENGINEER IS RESPONSIBLE FOR RECORDING EXISTING PAVEMENT MARKINGS PRIOR TO HMA SURFACE REMOVAL.
8. THE CONTRACTOR SHALL CONTACT THE DISTRICT ONE ARTERIAL TRAFFIC CONTROL SUPERVISOR AT (847) 705-4470 A MINIMUM OF 72 HOURS PRIOR TO INSTALLATION OF TEMPORARY TRAFFIC CONTROL DEVICES.
9. ALL PAVEMENT PATCHING LOCATIONS AND COMBINATION CONCRETE CURB AND GUTTER REMOVAL AND REPLACEMENT WILL BE DETERMINED IN THE FIELD BY THE RESIDENT ENGINEER.
10. BEFORE BEGINNING WORK, THE CONTRACTOR SHALL RETAIN AND RECORD FOR FUTURE REFERENCE, ALL EXISTING PAVEMENT MARKING LINES AND RAISED REFLECTIVE PAVEMENT MARKERS IN ORDER THAT THESE LOCATIONS CAN BE RE-ESTABLISHED FOR STRIPING. EXACT LOCATIONS OF ALL PAVEMENT MARKINGS SHALL BE AS DIRECTED BY THE RESIDENT ENGINEER.
11. THE CONTRACTOR SHALL BE RESPONSIBLE FOR VERIFYING ALL DIMENSIONS AND CONDITIONS EXISTING IN THE FIELD PRIOR TO CONSTRUCTION AND ORDERING MATERIALS.
12. THE CONTRACTOR SHALL BE REQUIRED TO PROVIDE ACCESS TO ABUTTING PROPERTY AT ALL TIMES DURING THE CONSTRUCTION OF THIS PROJECT.
13. PAVEMENT REPLACEMENT AROUND FRAMES AND GRATES OR LIDS WHERE DRAINAGE, SANITARY, WATER MAIN OR ELECTRICAL STRUCTURES ARE ADJUSTED OR RECONSTRUCTED, SHALL BE WITH CLASS SI CONCRETE.
14. PAY ITEM X5539700-STORM SEWERS TO BE CLEANED-SHALL ONLY BE UTILIZED TO CLEAN STORM SEWER LATERAL PIPES BETWEEN INLETS OR CATCH BASINS AND THE MAIN SEWER ONLY AT THE STRUCTURES SHOWN TO BE CLEANED AS INDICATED. SEE ROADWAY PLANS FOR LOCATIONS.
15. ANY TEMPORARY PAVEMENT MARKINGS NOT NEEDED AT THE TIME OF CONSTRUCTION SHOULD BE DELETED FROM THE CONTRACT.
16. PERMITS FROM THE CITY OF CHICAGO ARE REQUIRED BY THE CONTRACTOR FOR ALL UNDERGROUND STORM, SANITARY OR COMBINED STORM SEWER CONSTRUCTION, AND FOR ALL WORK INVOLVED WITH THE ADJUSTMENT OF SEWER STRUCTURES.

GENERAL NOTES (CONT)

17. IT IS THE CONTRACTOR'S SOLE RESPONSIBILITY TO COORDINATE WITH ALL RAILROADS WHENEVER CONSTRUCTION ACTIVITY IS WITHIN 25 FEET OF THE RAILROAD ROW. THE CONTRACTOR SHALL RETAIN FLAGMEN EMPLOYED AND DESIGNATED BY THE RAILROAD TO MONITOR ON-COMING TRAIN TRAFFIC, AND ADVISE CONTRACTOR PERSONNEL WHEN ACTIVITY ON OR NEAR THE RAILROAD RIGHT-OF-WAY MAY PROCEED. THIS ITEM WILL BE PAID FOR ACCORDING TO ARTICLE 107.12 AND WILL BE REIMBURSED ACCORDING TO ARTICLE 109.05.
18. THE CONTRACTOR SHALL CONTACT PAUL LABUZ, THE CHICAGO DEPARTMENT OF TRANSPORTATION PROJECT MANAGER, AT (312) 744-3831 PRIOR TO THE RAILROAD TRACK REMOVAL ON KINGSBURY STREET TO COORDINATE REMOVAL WITH THE RECONSTRUCTION PROJECT ON KINGSBURY STREET.
19. THE CONTRACTOR SHALL CONTACT JOE VOLDRICH, THE CHICAGO DEPARTMENT OF TRANSPORTATION PROJECT MANAGER, AT (312) 744-3831 PRIOR TO RESURFACING OF LASALLE DRIVE TO COORDINATE WITH THE TRAFFIC STAGING ON THE LASALLE DRIVE RECONSTRUCTION PROJECT BETWEEN CLARK STREET AND LAKE SHORE DRIVE.

INDEX OF SHEETS

SHEET NO.	DESCRIPTION
1	COVER SHEET
2	INDEX OF SHEETS, HIGHWAY STANDARDS & GENERAL NOTES
3	SUMMARY OF QUANTITIES
4 - 5	TYPICAL SECTIONS
6 - 11	ROADWAY PLANS
12 - 17	PAVEMENT MARKING PLANS DETECTOR LOOP REPLACEMENT PLANS
18	DETAILS FOR FRAMES AND LIDS ADJUSTMENT WITH MILLING (BD-8)
19	PAVEMENT PATCHING FOR HMA SURFACED PAVEMENT (BD-22)
20	CURB OR CURB AND GUTTER REMOVAL AND REPLACEMENT (BD-24)
21	BUTT JOINT AND HMA TAPER DETAILS (BD-32)
22	CITY OF CHICAGO CATCH BASIN, INLET AND MANHOLE DETAILS (BD-47)
23	TRAFFIC CONTROL AND PROTECTION FOR SIDE ROADS, INTERSECTIONS, AND DRIVEWAYS (TC-10)
24	TRAFFIC CONTROL AND PROTECTION OF TURN BAYS (TO REMAIN OPEN TO TRAFFIC) (TC-14)
25	PAVEMENT MARKING LETTERS AND SYMBOLS FOR TRAFFIC STAGING (TC-16)
26	ARTERIAL ROAD INFORMATION SIGNING (TC-22)
27 - 28	CITY OF CHICAGO TYPICAL PAVEMENT MARKINGS (TC-24)
29	DISTRICT 1 DETECTOR LOOP INSTALLATION DETAILS FOR ROADWAY RESURFACING (TS-07)

COMMITMENTS

THERE ARE NO COMMITMENTS FOR THIS PROJECT.

HIGHWAY STANDARDS

STANDARD NO.	DESCRIPTION
000001-06	STANDARD SYMBOLS, ABBREVIATIONS, AND PATTERNS
442201-03	CLASS C AND D PATCHES
604001-03	FRAME AND LIDS, TYPE 1
606001-04	CONCRETE CURB TYPE B AND COMBINATION CONCRETE CURB AND GUTTER
701301-04	LANE CLOSURE, 2L, 2W, SHORT TIME OPERATIONS
701311-03	LANE CLOSURE, 2L, 2W MOVING OPERATIONS-DAY ONLY
701427	LANE CLOSURE, MULTILANE, INTERMITTENT OR MOVING OPER., FOR SPEEDS ≤ 40 MPH
701501-06	URBAN LANE CLOSURE, 2L, 2W, UNDIVIDED
701601-07	URBAN LANE CLOSURE, MULTILANE, 1W OR 2W WITH NONTRAVERSABLE MEDIAN
701602-05	URBAN LANE CLOSURE, MULTILANE, 2W WITH BIDIRECTIONAL LEFT TURN LANE
701606-07	URBAN LANE CLOSURE, MULTILANE, 2W WITH MOUNTABLE MEDIAN
701701-07	URBAN LANE CLOSURE, MULTILANE INTERSECTION
701801-04	LANE CLOSURE MULTILANE 1W OR 2W CROSSWALK OR SIDEWALK CLOSURE
701901-01	TRAFFIC CONTROL DEVICES

COPYRIGHT © 2011 BY BAXTER & WOODMAN, INC. ALL RIGHTS RESERVED. THIS DOCUMENT IS THE PROPERTY OF BAXTER & WOODMAN, INC. AND IS NOT TO BE REPRODUCED OR TRANSMITTED IN ANY FORM OR BY ANY MEANS, ELECTRONIC OR MECHANICAL, INCLUDING PHOTOCOPYING, RECORDING, OR BY ANY INFORMATION STORAGE AND RETRIEVAL SYSTEM. WITHOUT PERMISSION IN WRITING FROM BAXTER & WOODMAN, INC.

3/11



DESIGNED - CAC	REVISED - PER IDOT 2-3-11
DRAWN - BCD	REVISED - PER IDOT 2-18-11
CHECKED - RWL	REVISED -
DATE - 12-17-10	FILE - I00153-w013-gennotes.shp

**STATE OF ILLINOIS
DEPARTMENT OF TRANSPORTATION**

**NORTH AVENUE
MILWAUKEE AVENUE TO CLARK STREET
INDEX OF SHEETS, HIGHWAY STANDARDS AND GENERAL NOTES**

F.A.P. RTE.	SECTION	COUNTY	TOTAL SHEETS	SHEET NO.
307	2010-140-RS	COOK	29	2
SCALE: NONE				CONTRACT NO. 60N19
STA. TO STA.		FED. ROAD DIST. NO. 1 ILLINOIS FED. AID PROJECT		

80% FED.
20% STATE

SUMMARY OF QUANTITIES			URBAN	CONSTRUCTION TYPE CODE	
CODE	ITEM DESCRIPTION	UNIT	TOTAL QUANTITY	0005 QUANTITY	
40600200	BITUMINOUS MATERIALS (PRIME COAT)	TON	62	62	
40600300	AGGREGATE (PRIME COAT)	TON	488	488	
40600400	MIXTURE FOR CRACKS, JOINTS, AND FLANGEWAYS	TON	18	18	
40600895	CONSTRUCTING TEST STRIP	EACH	2	2	
40600982	HOT-MIX ASPHALT SURFACE REMOVAL - BUTT JOINT	SO YD	1,401	1,401	
40601005	HOT-MIX ASPHALT REPLACEMENT OVER PATCHES	TON	1,034	1,034	
40603595	POLYMERIZED HOT-MIX ASPHALT SURFACE COURSE, MIX "F", N90	TON	8,175	8,175	
44000159	HOT-MIX ASPHALT SURFACE REMOVAL, 2 1/2"	SO YD	81,235	81,235	
Z0004562	COMBINATION CONCRETE CURB AND GUTTER REMOVAL AND REPLACEMENT	FOOT	3,373	3,373	
44002216	HOT-MIX ASPHALT REMOVAL OVER PATCHES, 4"	SO YD	4,494	4,494	
44201761	CLASS D PATCHES, TYPE I, 10 INCH	SO YD	48	48	
44201765	CLASS D PATCHES, TYPE II, 10 INCH	SO YD	504	504	
44201769	CLASS D PATCHES, TYPE III, 10 INCH	SO YD	728	728	
44201771	CLASS D PATCHES, TYPE IV, 10 INCH	SO YD	2,178	2,178	
60300305	FRAMES AND LIDS TO BE ADJUSTED	EACH	28	28	
60406000	FRAMES AND LIDS, TYPE I, OPEN LID	EACH	1	1	
67000400	ENGINEER'S FIELD OFFICE, TYPE A	CAL MO	6	6	
67100100	MOBILIZATION	L SUM	1	1	
70102625	TRAFFIC CONTROL AND PROTECTION, STANDARD 701606	L SUM	1	1	
70102630	TRAFFIC CONTROL AND PROTECTION, STANDARD 701601	L SUM	1	1	
70102632	TRAFFIC CONTROL AND PROTECTION, STANDARD 701602	L SUM	1	1	
70102635	TRAFFIC CONTROL AND PROTECTION, STANDARD 701701	L SUM	1	1	
70300100	SHORT TERM PAVEMENT MARKING	FOOT	24,600	24,600	
70300210	TEMPORARY PAVEMENT MARKING LETTERS AND SYMBOLS	SO FT	4,374	4,374	
70300220	TEMPORARY PAVEMENT MARKING - LINE 4"	FOOT	43,628	43,628	
70300240	TEMPORARY PAVEMENT MARKING - LINE 6"	FOOT	19,828	19,828	
70300250	TEMPORARY PAVEMENT MARKING - LINE 8"	FOOT	4,104	4,104	
70300260	TEMPORARY PAVEMENT MARKING - LINE 12"	FOOT	2,044	2,044	
70300280	TEMPORARY PAVEMENT MARKING - LINE 24"	FOOT	3,764	3,764	
70301000	WORK ZONE PAVEMENT MARKING REMOVAL	SO FT	1,640	1,640	
78000100	THERMOPLASTIC PAVEMENT MARKING - LETTERS AND SYMBOLS	SO FT	2,127	2,127	
78000200	THERMOPLASTIC PAVEMENT MARKING - LINE 4"	FOOT	21,833	21,833	
78000400	THERMOPLASTIC PAVEMENT MARKING - LINE 6"	FOOT	9,840	9,840	
78000500	THERMOPLASTIC PAVEMENT MARKING - LINE 8"	FOOT	2,052	2,052	
78000600	THERMOPLASTIC PAVEMENT MARKING - LINE 12"	FOOT	1,022	1,022	
78000650	THERMOPLASTIC PAVEMENT MARKING - LINE 24"	FOOT	1,882	1,882	
78003100	PREFORMED PLASTIC PAVEMENT MARKING, TYPE B - LETTERS AND SYMBOLS	SO FT	183	183	

* INDICATES SPECIALTY ITEM

80% FED.
20% STATE

SUMMARY OF QUANTITIES			URBAN	CONSTRUCTION TYPE CODE	
CODE	ITEM DESCRIPTION	UNIT	TOTAL QUANTITY	0005 QUANTITY	
78003180	PREFORMED PLASTIC PAVEMENT MARKING, TYPE B - LINE 24"	FOOT	48	48	
88600600	DETECTOR LOOP REPLACEMENT	FOOT	1,820	1,820	
Z0018500	DRAINAGE STRUCTURE TO BE CLEANED	EACH	104	104	
Z0076600	TRAINEES	HOUR	500	500	
Z0048665	RAILROAD PROTECTIVE LIABILITY INSURANCE	L SUM	1	1	
Z0030850	TEMPORARY INFORMATION SIGNING	SO FT	52	52	
X4060826	POLYMERIZED LEVELING BINDER (MACHINE METHOD), IL 4.75, N50	TON	3,504	3,504	
X5539700	STORM SEWERS TO BE CLEANED	FOOT	4,056	4,056	
X6030310	FRAMES AND LIDS TO BE ADJUSTED (SPECIAL)	EACH	249	249	
XX005972	STAMPED ASPHALT CROSSWALK	SO YD	498	498	
Z0048900	RAILROAD TRACK REMOVAL	FOOT	125	125	

* INDICATES SPECIALTY ITEM
Δ = Non-participating

COPYRIGHT © 2011 BY BAXTER & WOODMAN INC.
 STATE OF ILLINOIS - PROFESSIONAL DESIGN FIRM
 LICENSE NO. 018-00023 - EXPIRES 02/28/2011
 4888888
 ...:\p1015\00083\wo13\en101
 ...:\p1015\00083\wo13\en101
 ...:\p1015\00083\wo13\en101
 ...:\p1015\00083\wo13\en101



DESIGNED - CAC	REVISED - PER IDOT 2-3-11
DRAWN - BCD	REVISED -
CHECKED - RWL	REVISED -
DATE - 12-17-10	FILE - 100153-wo13-soq.sht

STATE OF ILLINOIS
DEPARTMENT OF TRANSPORTATION

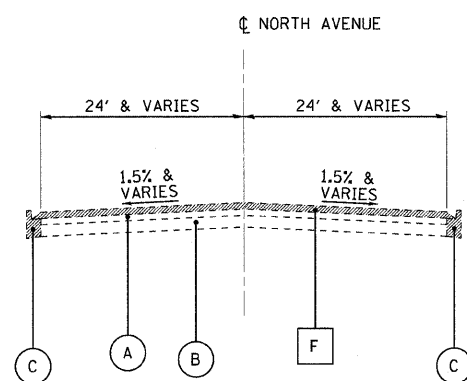
NORTH AVENUE
MILWAUKEE AVENUE TO CLARK STREET
SUMMARY OF QUANTITIES

F.A.P. RTE. 307	SECTION 2010-140-RS	COUNTY COOK	TOTAL SHEETS 29	SHEET NO. 3
CONTRACT NO. 60N19				
FED. ROAD DIST. NO. 1 ILLINOIS FED. AID PROJECT				

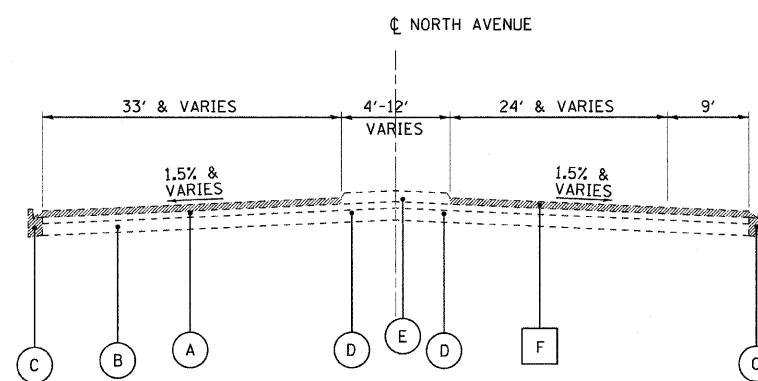
SCALE: NONE STA. TO STA.

LEGEND

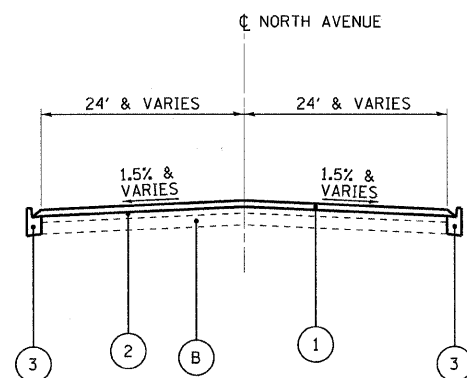
- (A) EXISTING HOT-MIX ASPHALT SURFACE, 4" (±)
- (B) EXISTING PCC BASE, 10" (±)
- (C) EXISTING COMBINATION CONCRETE CURB & GUTTER
- (D) EXISTING COMBINATION CONCRETE CURB & GUTTER (LOCATED AT MEDIANS)
- (E) EXISTING LANDSCAPED BARRIER MEDIAN
- (F) HOT-MIX ASPHALT SURFACE REMOVAL, 2 1/2"
- (1) POLYMERIZED HOT-MIX ASPHALT SURFACE COURSE MIX "F", N90-1 3/4"
- (2) POLYMERIZED LEVELING BINDER (MACHINE METHOD), IL-4.75, N50, 3/4"
- (3) COMBINATION CONCRETE CURB AND GUTTER REMOVAL AND REPLACEMENT (AS DETERMINED BY THE ENGINEER)
- ▨ ITEM TO BE REMOVED



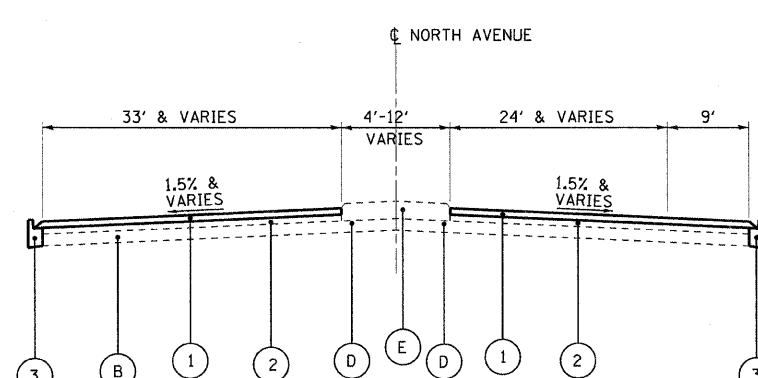
**EXISTING TYPICAL SECTION
NORTH AVENUE
STA 101+86 TO STA 196+58**



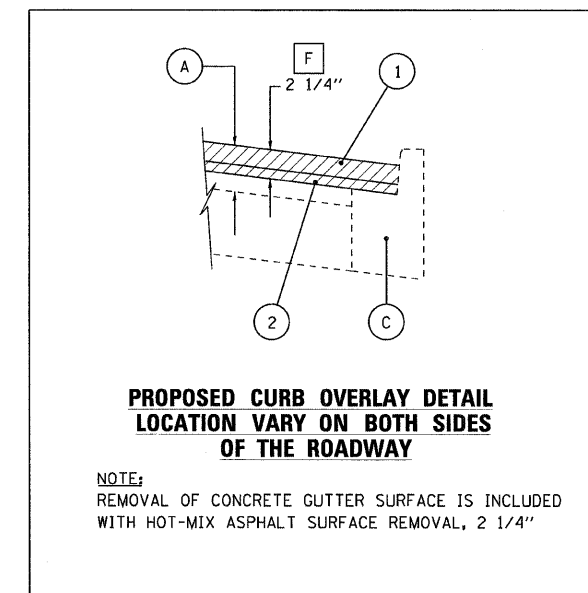
**EXISTING TYPICAL SECTION
NORTH AVENUE
STA 196+58 TO STA 220+16**



**PROPOSED TYPICAL SECTION
NORTH AVENUE
STA 101+86 TO STA 196+58**



**PROPOSED TYPICAL SECTION
NORTH AVENUE
STA 196+58 TO STA 220+16**



NOTE:
REMOVAL OF CONCRETE GUTTER SURFACE IS INCLUDED WITH HOT-MIX ASPHALT SURFACE REMOVAL, 2 1/4"

NOTE:
THE CONTRACTOR SHALL PATCH FIRST BEFORE MILLING.

HOT-MIX ASPHALT MIXTURE REQUIREMENTS	
MIXTURE TYPE	AIR VOIDS @ Ndes
POLYMERIZED HOT-MIX ASPHALT SURFACE COURSE, MIX "F", N90 (IL 9.5mm)	4% @ 90 GYR.
POLYMERIZED LEVELING BINDER (MACHINE METHOD), IL 4.75, N50	4% @ 50 GYR.
CLASS D PATCHES (HMA BINDER IL-19 mm)	4% @ 70 GYR.
HOT-MIX ASPHALT REPLACEMENT OVER PATCHES (HMA BINDER IL-19mm)	4% @ 70 GYR.

- MIXTURE NOTES:**
1. THE UNIT WEIGHT USED TO CALCULATE ALL HOT-MIX ASPHALT SURFACE MIXTURE QUANTITIES IS 112 LBS/SQ. YD./IN.
 2. THE "AC TYPE" FOR POLYMERIZED HMA MIXES SHALL BE "SBS/SBR PG 70-22" AND FOR NON-POLYMERIZED HMA THE "AC TYPE" SHALL BE "PG 64-22" UNLESS MODIFIED BY DISTRICT ONE SPECIAL PROVISIONS. FOR "PERCENT RAP" SEE DISTRICT ONE SPECIAL PROVISIONS.

COPYRIGHT © 2011 BY BAXTER & WOODMAN, INC.
 STATE OF ILLINOIS PROFESSIONAL DESIGN FIRM
 4885000 00-180-0000 3/29/2011 11:50:00 AM 11:50:00 AM 11:50:00 AM 11:50:00 AM
 I:\WORK\PROJECTS\100153\100153-01\DRAWINGS\0001\0001-01\TYPSEC01.DWG
 3/11/11



DESIGNED - CAC	REVISED - PER IDOT 2-3-11
DRAWN - BCD	REVISED - PER IDOT 2-18-11
CHECKED - RWL	REVISED -
DATE - 12-17-10	FILE - 100153-w013-tysec01.sht

**STATE OF ILLINOIS
DEPARTMENT OF TRANSPORTATION**

**NORTH AVENUE
MILWAUKEE AVENUE TO CLARK STREET
TYPICAL SECTIONS**

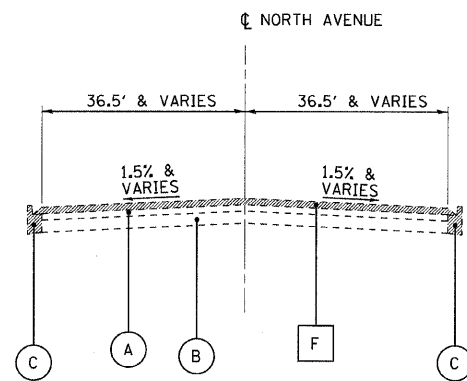
SCALE: NONE

STA. TO STA.

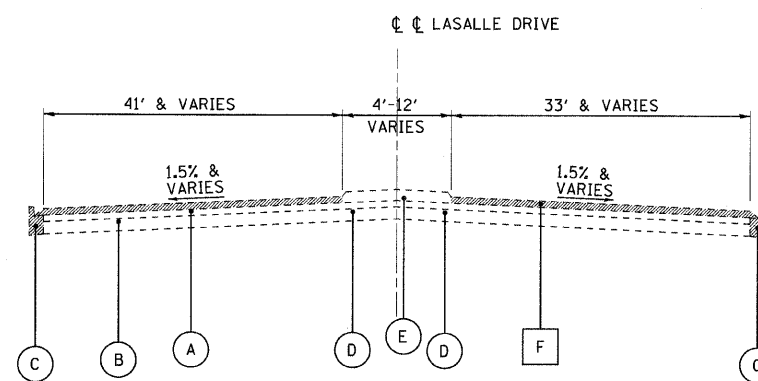
F.A.P. RTE. 307	SECTION 2010-140-RS	COUNTY COOK	TOTAL SHEETS 29	SHEET NO. 4
FED. ROAD DIST. NO. 1 ILLINOIS FED. AID PROJECT CONTRACT NO. 60N19				

LEGEND

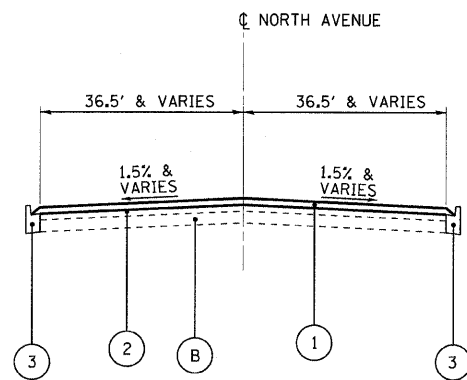
- (A) EXISTING HOT-MIX ASPHALT SURFACE, 4 (±)
- (B) EXISTING PCC BASE, 10" (±)
- (C) EXISTING COMBINATION CONCRETE CURB & GUTTER
- (D) EXISTING COMBINATION CONCRETE CURB & GUTTER (LOCATED AT MEDIANS)
- (E) EXISTING LANDSCAPED BARRIER MEDIAN
- (F) HOT-MIX ASPHALT SURFACE REMOVAL, 2 1/2"
- ① POLYMERIZED HOT-MIX ASPHALT SURFACE COURSE MIX "F", N90-1 3/4"
- ② POLYMERIZED LEVELING BINDER (MACHINE METHOD), IL-4.75, N50, 3/4"
- ③ COMBINATION CONCRETE CURB AND GUTTER REMOVAL AND REPLACEMENT (AS DETERMINED BY THE ENGINEER)
- ITEM TO BE REMOVED



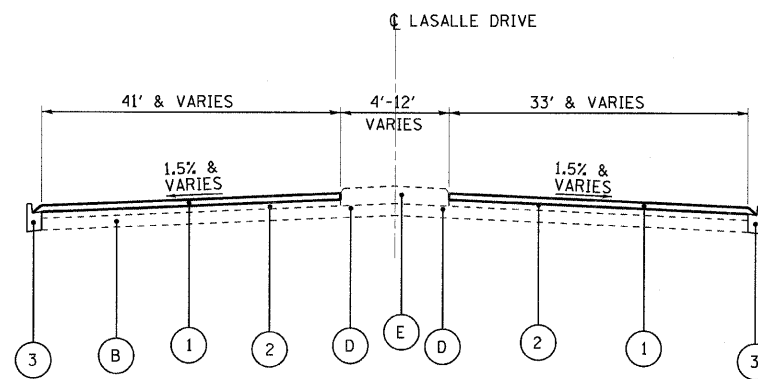
**EXISTING TYPICAL SECTION
NORTH AVENUE
STA 220+16 TO STA 222+14**



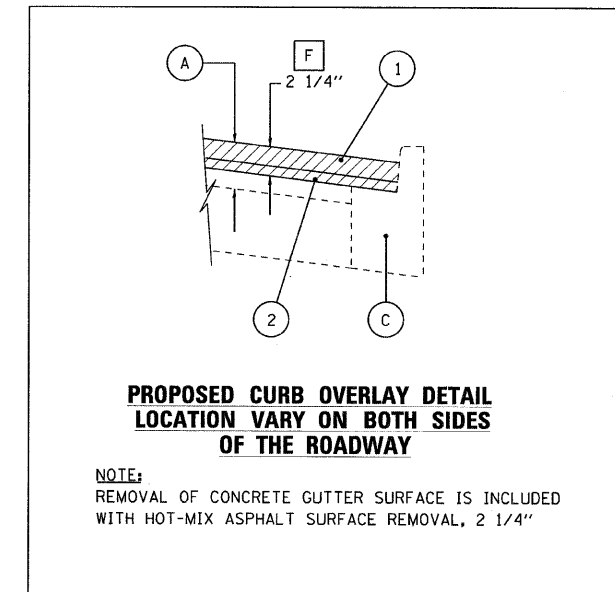
**EXISTING TYPICAL SECTION
LASALLE DRIVE
STA 223+92 TO STA 229+96**



**PROPOSED TYPICAL SECTION
NORTH AVENUE
STA 220+16 TO STA 222+14**



**PROPOSED TYPICAL SECTION
LASALLE DRIVE
STA 223+92 TO STA 229+96**



**PROPOSED CURB OVERLAY DETAIL
LOCATION VARY ON BOTH SIDES
OF THE ROADWAY**

NOTE:
REMOVAL OF CONCRETE GUTTER SURFACE IS INCLUDED
WITH HOT-MIX ASPHALT SURFACE REMOVAL, 2 1/4"

COPYRIGHT © 2011 BY BAXTER & WOODMAN, INC. ...
 LICENSE NO. 184-000129 EXPIRES 4/30/2011
 3/23/2011 11:57:05 AM
 I:\Mokenc\ALDOT\100153-WO13-TYPSEC02.DWG

3/11/11



DESIGNED - CAC	REVISED - PER IDOT 2-3-11
DRAWN - BCD	REVISED - PER IDOT 2-18-11
CHECKED - RWL	REVISED -
DATE - 12-17-10	FILE - 100153-wo13-typsec02.shx

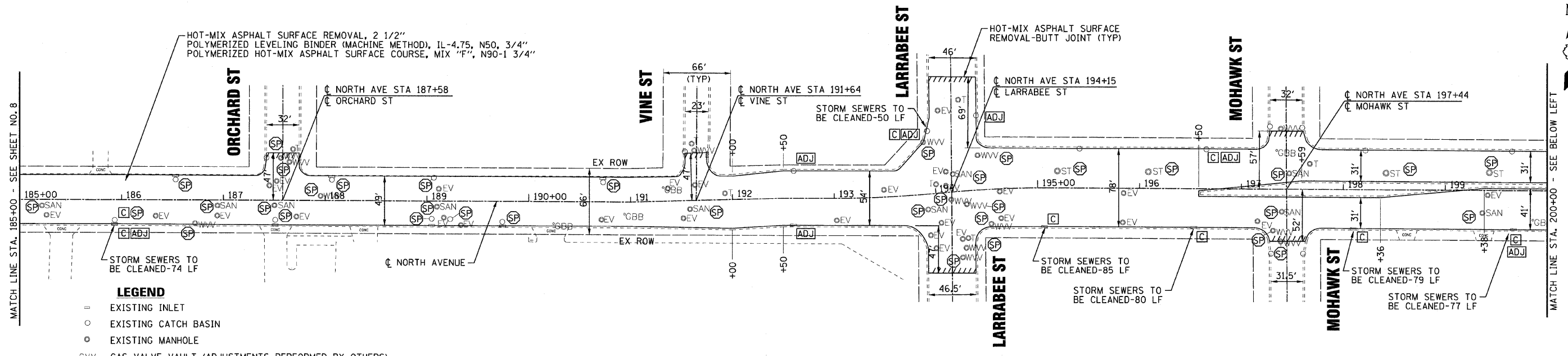
**STATE OF ILLINOIS
DEPARTMENT OF TRANSPORTATION**

**NORTH AVENUE
MILWAUKEE AVENUE TO CLARK STREET
TYPICAL SECTIONS**

SCALE: NONE

STA. TO STA.

F.A.P. RTE. 307	SECTION 2010-140-RS	COUNTY COOK	TOTAL SHEETS 29	SHEET NO. 5
FED. ROAD DIST. NO. 1 ILLINOIS			FED. AID PROJECT	
CONTRACT NO. 60N19				

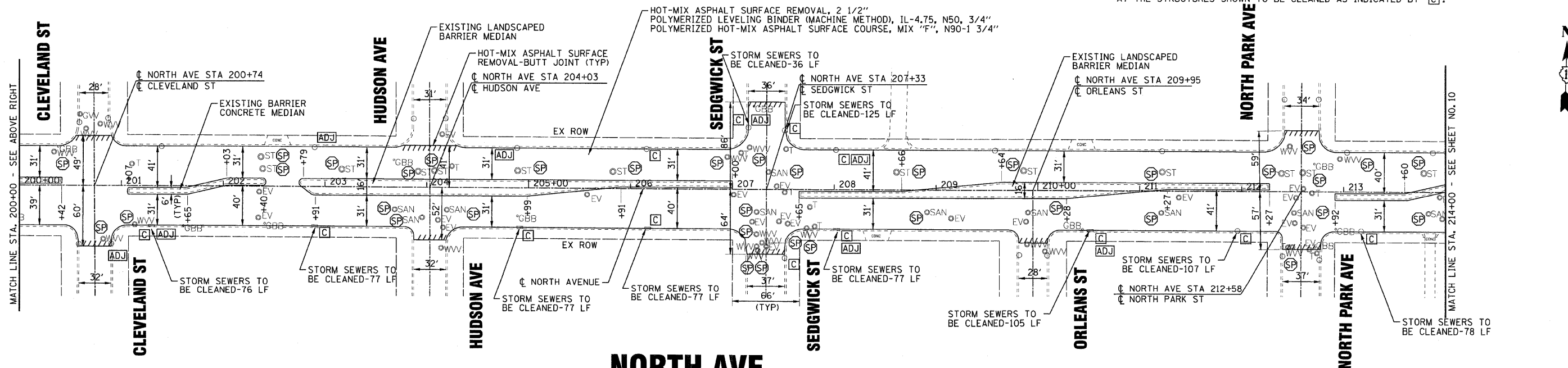


LEGEND

- EXISTING INLET
- EXISTING CATCH BASIN
- EXISTING MANHOLE
- GVV GAS VALVE VAULT (ADJUSTMENTS PERFORMED BY OTHERS)
- GBB GAS B-BOX (ADJUSTMENTS PERFORMED BY OTHERS)
- EV ELECTRICAL VAULT (ADJUSTMENTS PERFORMED BY OTHERS)
- T TELEPHONE (ADJUSTMENTS PERFORMED BY OTHERS)
- WVV WATER VALVE VAULT (CITY OF CHICAGO)
- SAN SANITARY (CITY OF CHICAGO)
- ST STORM (CITY OF CHICAGO)
- SP FRAMES AND LIDS TO BE ADJUSTED (SPECIAL)
- C DRAINAGE STRUCTURES TO BE CLEANED
- ADJ FRAMES AND LIDS TO BE ADJUSTED

NOTES:

1. SAW CUTTING PRIOR TO ANY REMOVAL ITEMS NOTED ON THE PLANS OR DIRECTED BY THE ENGINEER SHALL BE CONSIDERED INCLUDED IN THE COST OF THE ITEMS BEING REMOVED.
2. ALL PAVEMENT PATCHING LOCATIONS WILL BE DETERMINED BY THE RESIDENT ENGINEER.
3. ALL COMBINATION CONCRETE CURB AND GUTTER REMOVAL AND REPLACEMENT WILL BE DETERMINED BY THE RESIDENT ENGINEER.
4. THE CONTRACTOR SHALL USE CARE IN REMOVING OR EXCAVATING NEAR ALL EXISTING ITEMS WHICH WILL REMAIN, ANY DAMAGE DONE TO EXISTING ITEMS BY THE CONTRACTOR SHALL BE REPAIRED AT THE CONTRACTOR'S EXPENSE.
5. PAY ITEM X5539700 - STORM SEWERS TO BE CLEANED - SHALL ONLY BE UTILIZED TO CLEAN STORM SEWER LATERAL PIPES BETWEEN INLETS OR CATCH BASINS AND THE MAIN SEWER ONLY AT THE STRUCTURES SHOWN TO BE CLEANED AS INDICATED BY [C].



**STATE OF ILLINOIS
DEPARTMENT OF TRANSPORTATION**

**NORTH AVENUE
MILWAUKEE AVENUE TO CLARK STREET
ROADWAY PLAN**

SCALE: 1" = 50'

STA. 185+00 TO STA. 214+00

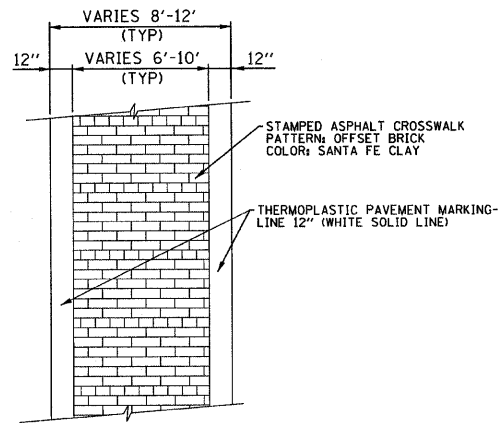
F.A.P. RTE. 307 SECTION 2010-140-RS COUNTY COOK TOTAL SHEETS 29 SHEET NO. 9 CONTRACT NO. 60N19

FED. ROAD DIST. NO. 1 ILLINOIS FED. AID PROJECT



DESIGNED - CAC	REVISED - PER IDOT 2-3-11
DRAWN - BCD	REVISED - PER CDOT 2-18-11
CHECKED - RWL	REVISED -
DATE - 12-17-10	FILE - 100153-wol3-Plan4.sht

COPYRIGHT © 2011 BY BAXTER & WOODMAN, INC.
 ALL RIGHTS RESERVED. ILLINOIS PROFESSIONAL ENGINEERING LICENSE NO. 021-039720-1. PRINTED 3/9/2011 3:08:52 PM.
 I:\makemol\100153-wol3-Plan4.sht



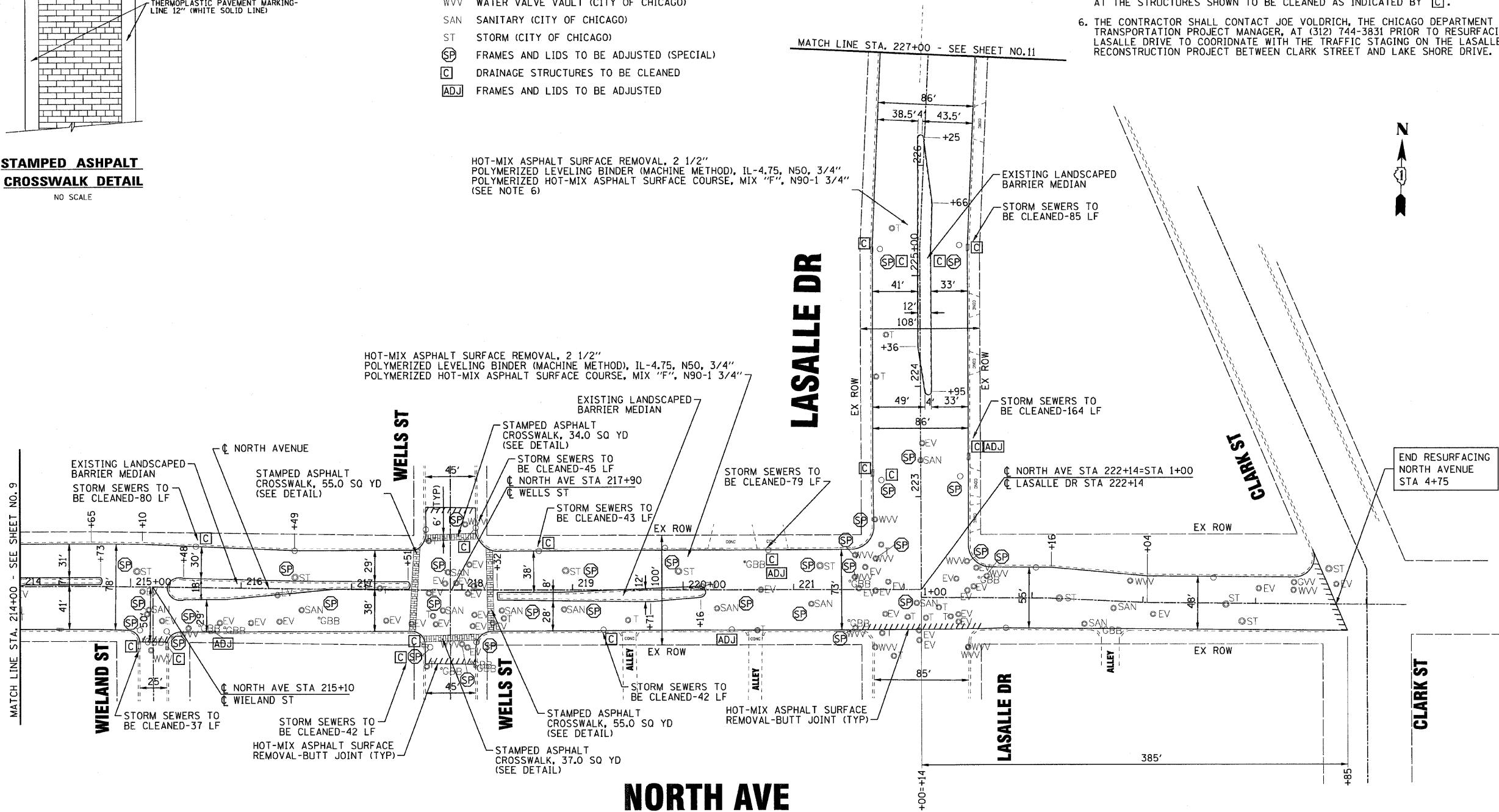
STAMPED ASPHALT CROSSWALK DETAIL
NO SCALE

- LEGEND**
- EXISTING INLET
 - EXISTING CATCH BASIN
 - ⊙ EXISTING MANHOLE
 - GVV GAS VALVE VAULT (ADJUSTMENTS PERFORMED BY OTHERS)
 - GBB GAS B-BOX (ADJUSTMENTS PERFORMED BY OTHERS)
 - EV ELECTRICAL VAULT (ADJUSTMENTS PERFORMED BY OTHERS)
 - T TELEPHONE (ADJUSTMENTS PERFORMED BY OTHERS)
 - WVV WATER VALVE VAULT (CITY OF CHICAGO)
 - SAN SANITARY (CITY OF CHICAGO)
 - ST STORM (CITY OF CHICAGO)
 - SP FRAMES AND LIDS TO BE ADJUSTED (SPECIAL)
 - C DRAINAGE STRUCTURES TO BE CLEANED
 - ADJ FRAMES AND LIDS TO BE ADJUSTED

HOT-MIX ASPHALT SURFACE REMOVAL, 2 1/2"
POLYMERIZED LEVELING BINDER (MACHINE METHOD), IL-4.75, N50, 3/4"
POLYMERIZED HOT-MIX ASPHALT SURFACE COURSE, MIX "F", N90-1 3/4"
(SEE NOTE 6)

NOTES:

1. SAW CUTTING PRIOR TO ANY REMOVAL ITEMS NOTED ON THE PLANS OR DIRECTED BY THE ENGINEER SHALL BE CONSIDERED INCLUDED IN THE COST OF THE ITEMS BEING REMOVED.
2. ALL PAVEMENT PATCHING LOCATIONS WILL BE DETERMINED BY THE RESIDENT ENGINEER.
3. ALL COMBINATION CONCRETE CURB AND GUTTER REMOVAL AND REPLACEMENT WILL BE DETERMINED BY THE RESIDENT ENGINEER.
4. THE CONTRACTOR SHALL USE CARE IN REMOVING OR EXCAVATING NEAR ALL EXISTING ITEMS WHICH WILL REMAIN, ANY DAMAGE DONE TO EXISTING ITEMS BY THE CONTRACTOR SHALL BE REPAIRED AT THE CONTRACTOR'S EXPENSE.
5. PAY ITEM X5539700 - STORM SEWERS TO BE CLEANED - SHALL ONLY BE UTILIZED TO CLEAN STORM SEWER LATERAL PIPES BETWEEN INLETS OR CATCH BASINS AND THE MAIN SEWER ONLY AT THE STRUCTURES SHOWN TO BE CLEANED AS INDICATED BY [C].
6. THE CONTRACTOR SHALL CONTACT JOE VOLDRICH, THE CHICAGO DEPARTMENT OF TRANSPORTATION PROJECT MANAGER, AT (312) 744-3831 PRIOR TO RESURFACING OF LASALLE DRIVE TO COORDINATE WITH THE TRAFFIC STAGING ON THE LASALLE DRIVE RECONSTRUCTION PROJECT BETWEEN CLARK STREET AND LAKE SHORE DRIVE.



COPYRIGHT © 2011 BY BAXTER & WOODMAN, INC.
 STATE OF ILLINOIS - PROFESSIONAL DESIGN FIRM
 4882000
 3/29/2011
 ...:\projects\1100153-wo13-Plan5.sht
 I:\work\1100153-wo13-Plan5.sht

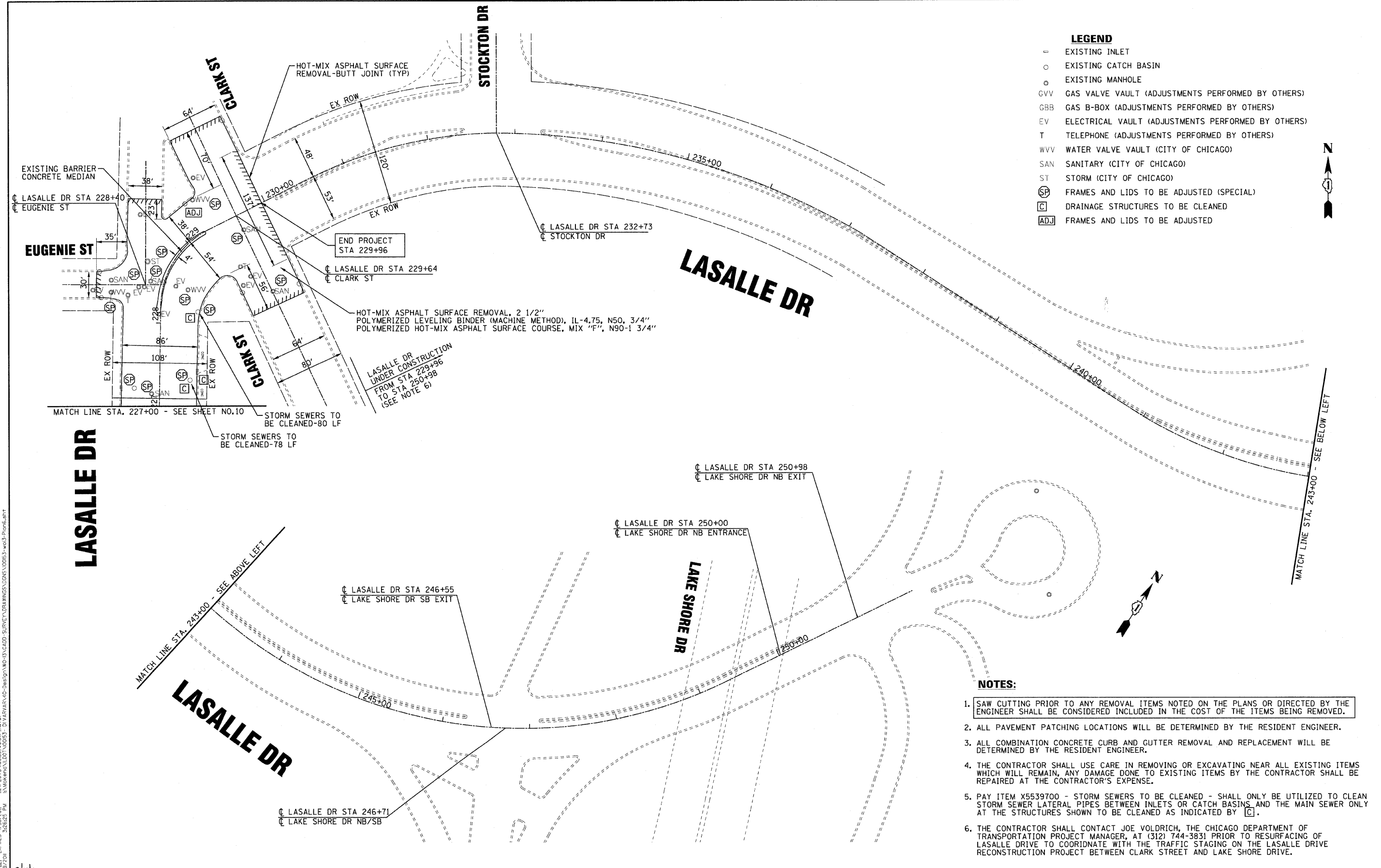
3/11/11



DESIGNED - CAC	REVISED - PER IDOT 2-3-11
DRAWN - BCD	REVISED - PER CDOT 2-18-11
CHECKED - RWL	REVISED -
DATE - 12-17-10	FILE - 100153-wo13-Plan5.sht

STATE OF ILLINOIS
DEPARTMENT OF TRANSPORTATION

NORTH AVENUE MILWAUKEE AVENUE TO CLARK STREET ROADWAY PLAN		F.A.P. RTE.	SECTION	COUNTY	TOTAL SHEETS	SHEET NO.
		307	2010-140-RS	COOK	29	10
SCALE: 1" = 50'		STA. 214+00 TO STA. 227+00		FED. ROAD DIST. NO. 1 ILLINOIS FED. AID PROJECT		
		CONTRACT NO. 60N19				



- LEGEND**
- EXISTING INLET
 - EXISTING CATCH BASIN
 - EXISTING MANHOLE
 - GVV GAS VALVE VAULT (ADJUSTMENTS PERFORMED BY OTHERS)
 - GBB GAS B-BOX (ADJUSTMENTS PERFORMED BY OTHERS)
 - EV ELECTRICAL VAULT (ADJUSTMENTS PERFORMED BY OTHERS)
 - T TELEPHONE (ADJUSTMENTS PERFORMED BY OTHERS)
 - WVV WATER VALVE VAULT (CITY OF CHICAGO)
 - SAN SANITARY (CITY OF CHICAGO)
 - ST STORM (CITY OF CHICAGO)
 - Ⓢ FRAMES AND LIDS TO BE ADJUSTED (SPECIAL)
 - ⓐ DRAINAGE STRUCTURES TO BE CLEANED
 - Ⓜ FRAMES AND LIDS TO BE ADJUSTED



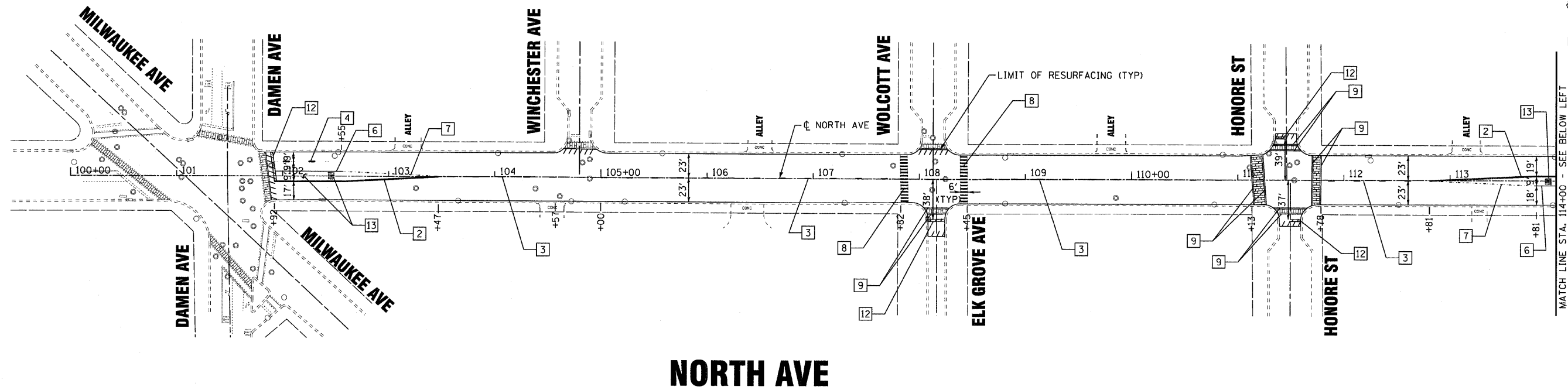
- NOTES:**
1. SAW CUTTING PRIOR TO ANY REMOVAL ITEMS NOTED ON THE PLANS OR DIRECTED BY THE ENGINEER SHALL BE CONSIDERED INCLUDED IN THE COST OF THE ITEMS BEING REMOVED.
 2. ALL PAVEMENT PATCHING LOCATIONS WILL BE DETERMINED BY THE RESIDENT ENGINEER.
 3. ALL COMBINATION CONCRETE CURB AND GUTTER REMOVAL AND REPLACEMENT WILL BE DETERMINED BY THE RESIDENT ENGINEER.
 4. THE CONTRACTOR SHALL USE CARE IN REMOVING OR EXCAVATING NEAR ALL EXISTING ITEMS WHICH WILL REMAIN, ANY DAMAGE DONE TO EXISTING ITEMS BY THE CONTRACTOR SHALL BE REPAIRED AT THE CONTRACTOR'S EXPENSE.
 5. PAY ITEM X5539700 - STORM SEWERS TO BE CLEANED - SHALL ONLY BE UTILIZED TO CLEAN STORM SEWER LATERAL PIPES BETWEEN INLETS OR CATCH BASINS AND THE MAIN SEWER ONLY AT THE STRUCTURES SHOWN TO BE CLEANED AS INDICATED BY ⓐ.
 6. THE CONTRACTOR SHALL CONTACT JOE VOLDRICH, THE CHICAGO DEPARTMENT OF TRANSPORTATION PROJECT MANAGER, AT (312) 744-3831 PRIOR TO RESURFACING OF LASALLE DRIVE TO COORDINATE WITH THE TRAFFIC STAGING ON THE LASALLE DRIVE RECONSTRUCTION PROJECT BETWEEN CLARK STREET AND LAKE SHORE DRIVE.

COPYRIGHT © 2011 BY BAXTER & WOODMAN, INC.
 STATE OF ILLINOIS - PROFESSIONAL DESIGN FIRM
 4886262
 3/11/11
 ...\\baxter\p\proj\229\229.dwg
 11/11/2010 10:05:11 AM
 11/11/2010 10:05:11 AM
 11/11/2010 10:05:11 AM

DESIGNED - CAC	REVISED - PER IDOT 2-3-11
DRAWN - BCD	REVISED - PER CDDT 2-18-11
CHECKED - RWL	REVISED -
DATE - 12-17-10	FILE - 100153-wo13-Plan6.shx

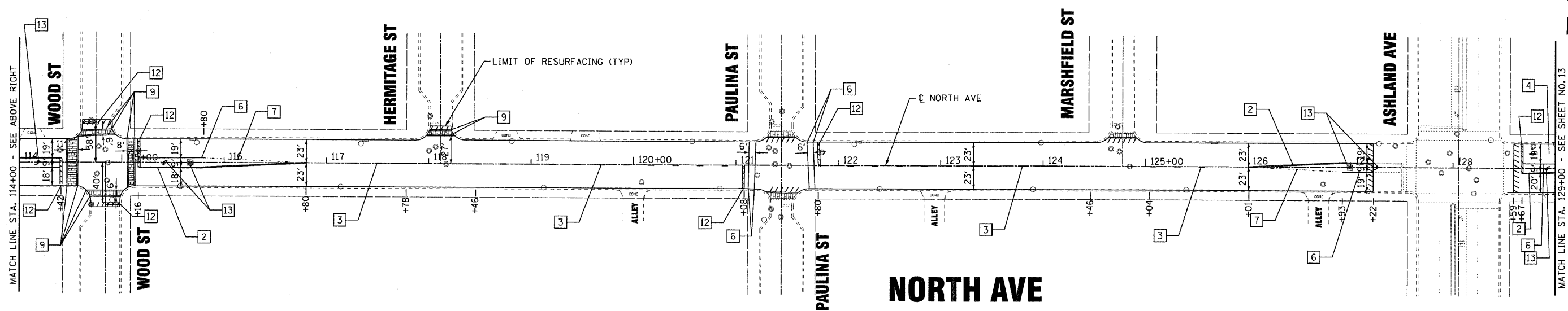
STATE OF ILLINOIS
DEPARTMENT OF TRANSPORTATION

NORTH AVENUE MILWAUKEE AVENUE TO CLARK STREET ROADWAY PLAN		F.A.P. RTE.	SECTION	COUNTY	TOTAL SHEETS	SHEET NO.
		307	2010-140-RS	COOK	29	11
SCALE: 1" = 50'		STA. 227+00 TO STA. 251+67		CONTRACT NO. 60N19		
FED. ROAD DIST. NO. 1 ILLINOIS FED. AID PROJECT						



NORTH AVE

- NOTES:**
1. MATCH EXISTING PAVEMENT MARKINGS AT THE PROJECT AND OMISSION LIMITS.
 2. ALL DAMAGE TO EXISTING PAVEMENT MARKINGS OUTSIDE THE REMOVAL LINE SHOWN ON THE PLANS SHALL BE REPLACED AT THE CONTRACTOR'S EXPENSE.
 3. FOR CROSSWALK MARKING DETAILS, SEE DISTRICT DETAIL TC-24 ON SHEET NO. 27.



NORTH AVE

LEGEND

- | | | |
|---|---|--|
| <ul style="list-style-type: none"> 1 THERMOPLASTIC PAVEMENT MARKING - LINE 4" (YELLOW SOLID LINE) 2 THERMOPLASTIC PAVEMENT MARKING - LINE 4" (DOUBLE YELLOW SOLID LINE) 3 THERMOPLASTIC PAVEMENT MARKING - LINE 4" (YELLOW - 6' DASH, 18' SKIP) 4 THERMOPLASTIC PAVEMENT MARKING - LINE 4" (WHITE LANE LINE - 6' DASH, 18' SKIP) 5 THERMOPLASTIC PAVEMENT MARKING - LINE 4" (WHITE SOLID LINE) | <ul style="list-style-type: none"> 6 THERMOPLASTIC PAVEMENT MARKING - LINE 6" (WHITE SOLID LINE) 7 THERMOPLASTIC PAVEMENT MARKING - LINE 6" (WHITE LANE LINE - 2' DASH, 6' SKIP) 8 THERMOPLASTIC PAVEMENT MARKING - LINE 8" (WHITE SOLID LINE) 9 THERMOPLASTIC PAVEMENT MARKING - LINE 12" (WHITE SOLID LINE) | <ul style="list-style-type: none"> 10 THERMOPLASTIC PAVEMENT MARKING - LINE 12" (WHITE DIAGONAL LINE) 11 THERMOPLASTIC PAVEMENT MARKING - LINE 12" (YELLOW DIAGONAL LINE) - 20' C-C 12 THERMOPLASTIC PAVEMENT MARKING - LINE 24" (WHITE STOP BAR) 13 THERMOPLASTIC PAVEMENT MARKING - LETTERS AND SYMBOLS (TYP) 14 PREFORMED PLASTIC PAVEMENT MARKING, TYPE B-LETTERS AND SYMBOLS 15 PREFORMED PLASTIC PAVEMENT MARKING, TYPE B-LINE 24" |
|---|---|--|

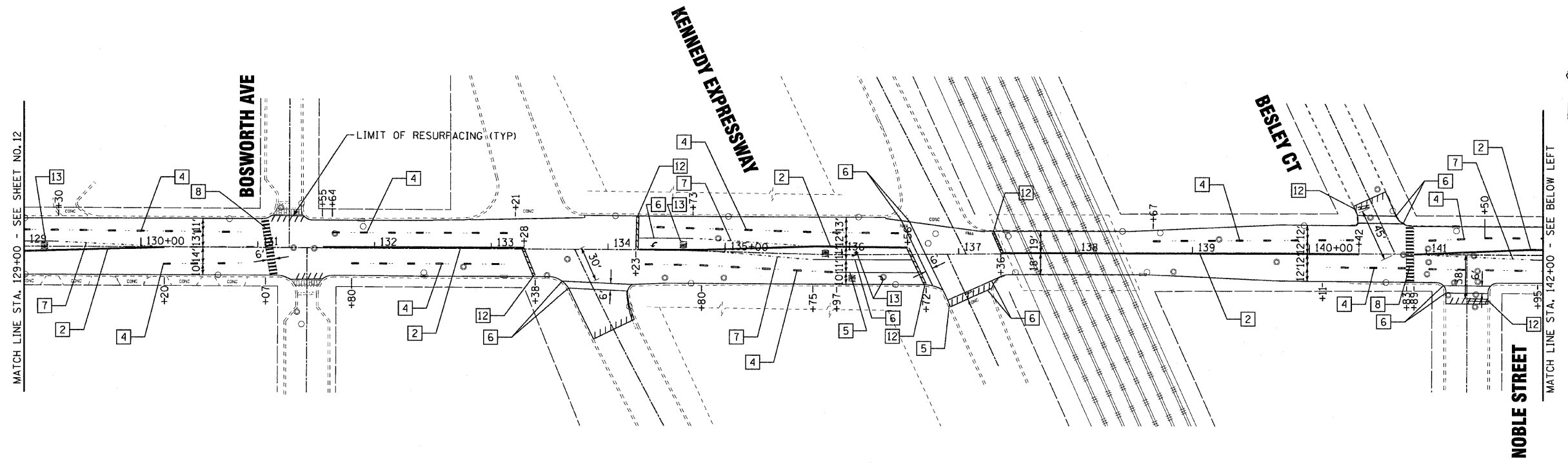
COPYRIGHT © 2011 BY BAXTER & WOODMAN, INC. ALL RIGHTS RESERVED. PROJECT NO. 100153-WO13-PMI. SHEET NO. 12. DATE: 12-17-10.



DESIGNED - CAC	REVISED - PER IDOT 2-3-11
DRAWN - CJC	REVISED - PER IDOT 2-18-11
CHECKED - RWL	REVISED -
DATE - 12-17-10	FILE - 100153-wo13-PMI.shp

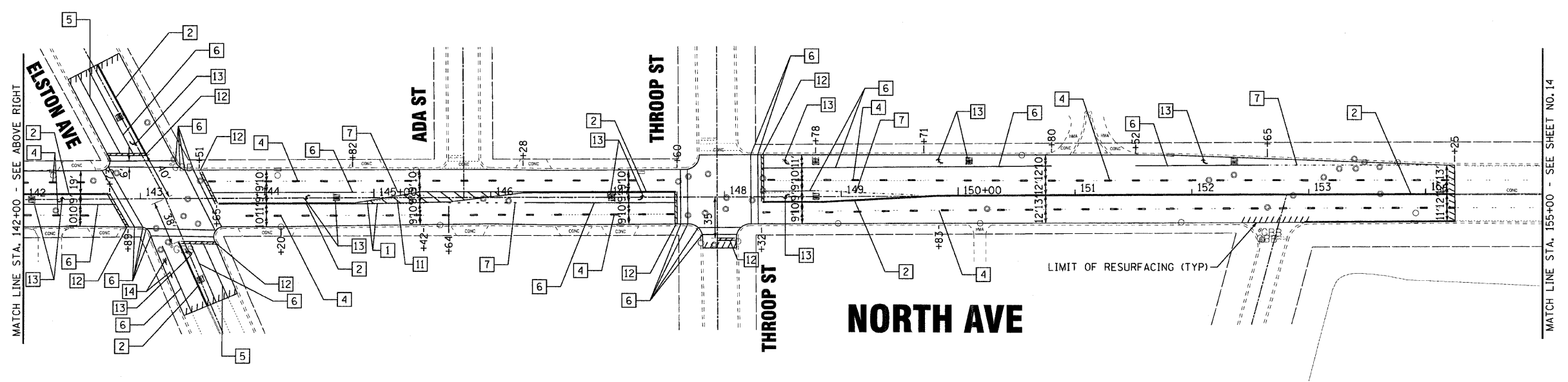
**STATE OF ILLINOIS
DEPARTMENT OF TRANSPORTATION**

NORTH AVENUE MILWAUKEE AVENUE TO CLARK STREET PAVEMENT MARKING PLAN		F.A.P. RTE. 307	SECTION 2010-140-RS	COUNTY COOK	TOTAL SHEETS 29	SHEET NO. 12
SCALE: 1" = 50'		STA. 100+00 TO STA. 129+00		CONTRACT NO. 60N19		
FED. ROAD DIST. NO. 1 ILLINOIS FED. AID PROJECT						



NORTH AVE

- NOTES:**
1. MATCH EXISTING PAVEMENT MARKINGS AT THE PROJECT AND OMISSION LIMITS.
 2. ALL DAMAGE TO EXISTING PAVEMENT MARKINGS OUTSIDE THE REMOVAL LINE SHOWN ON THE PLANS SHALL BE REPLACED AT THE CONTRACTOR'S EXPENSE.
 3. FOR CROSSWALK MARKING DETAILS, SEE DISTRICT DETAIL TC-24 ON SHEET NO. 27.



NORTH AVE

LEGEND

- | | | |
|---|---|--|
| <ul style="list-style-type: none"> 1 THERMOPLASTIC PAVEMENT MARKING - LINE 4" (YELLOW SOLID LINE) 2 THERMOPLASTIC PAVEMENT MARKING - LINE 4" (DOUBLE YELLOW SOLID LINE) 3 THERMOPLASTIC PAVEMENT MARKING - LINE 4" (YELLOW - 6' DASH, 18' SKIP) 4 THERMOPLASTIC PAVEMENT MARKING - LINE 4" (WHITE LANE LINE - 6' DASH, 18' SKIP) 5 THERMOPLASTIC PAVEMENT MARKING - LINE 4" (WHITE SOLID LINE) | <ul style="list-style-type: none"> 6 THERMOPLASTIC PAVEMENT MARKING - LINE 6" (WHITE SOLID LINE) 7 THERMOPLASTIC PAVEMENT MARKING - LINE 6" (WHITE LANE LINE - 2' DASH, 6' SKIP) 8 THERMOPLASTIC PAVEMENT MARKING - LINE 8" (WHITE SOLID LINE) 9 THERMOPLASTIC PAVEMENT MARKING - LINE 12" (WHITE SOLID LINE) | <ul style="list-style-type: none"> 10 THERMOPLASTIC PAVEMENT MARKING - LINE 12" (WHITE DIAGONAL LINE) 11 THERMOPLASTIC PAVEMENT MARKING - LINE 12" (YELLOW DIAGONAL LINE) - 20' C-C 12 THERMOPLASTIC PAVEMENT MARKING - LINE 24" (WHITE STOP BAR) 13 THERMOPLASTIC PAVEMENT MARKING - LETTERS AND SYMBOLS (TYP) 14 PREFORMED PLASTIC PAVEMENT MARKING, TYPE B-LETTERS AND SYMBOLS 15 PREFORMED PLASTIC PAVEMENT MARKING, TYPE B-LINE 24" |
|---|---|--|

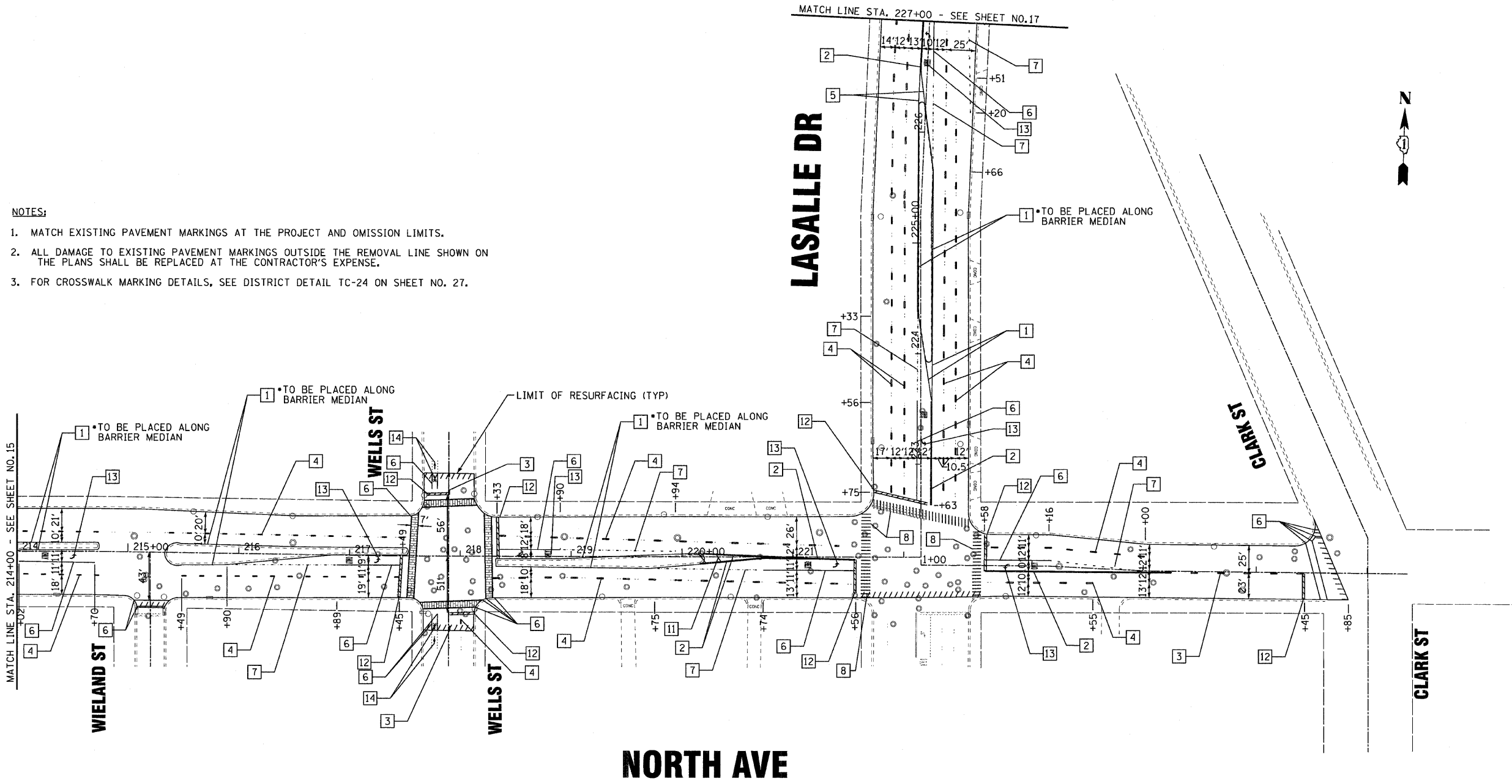
COPYRIGHT © 2011 BY BAXTER & WOODMAN, INC.
 ALL RIGHTS RESERVED. THIS DOCUMENT IS THE PROPERTY OF BAXTER & WOODMAN, INC. AND IS TO BE USED ONLY FOR THE PROJECT AND SITE SPECIFICALLY IDENTIFIED HEREIN.
 ANY REUSE OR DISTRIBUTION OF THIS DOCUMENT WITHOUT THE WRITTEN PERMISSION OF BAXTER & WOODMAN, INC. IS STRICTLY PROHIBITED.
 DATE: 3/9/2011
 FILE: 100153-wol3-pm2.shx



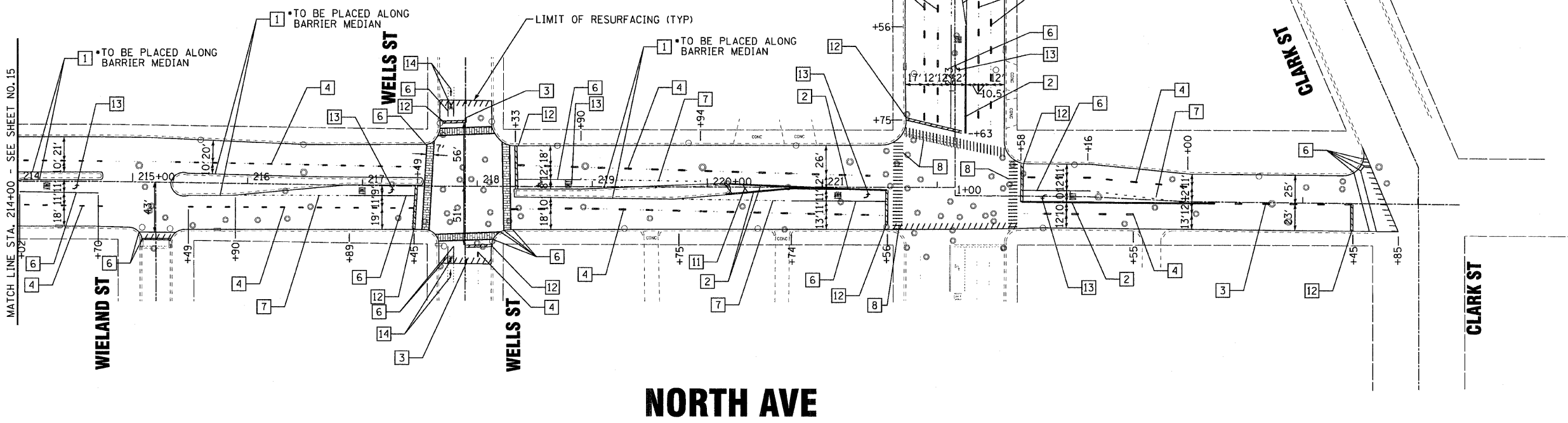
DESIGNED - CAC	REVISED - PER IDOT 2-3-11
DRAWN - CJC	REVISED - PER IDOT 2-18-11
CHECKED - RWL	REVISED -
DATE - 12-17-10	FILE - 100153-wol3-pm2.shx

**STATE OF ILLINOIS
DEPARTMENT OF TRANSPORTATION**

NORTH AVENUE MILWAUKEE AVENUE TO CLARK STREET PAVEMENT MARKING PLAN		F.A.P. RTE. 307	SECTION 2010-140-RS	COUNTY COOK	TOTAL SHEETS 29	SHEET NO. 13
SCALE: 1" = 50'		STA. 129+00 TO STA. 155+00		FED. ROAD DIST. NO. 1 ILLINOIS FED. AID PROJECT		
					CONTRACT NO. 60N19	



- NOTES:**
1. MATCH EXISTING PAVEMENT MARKINGS AT THE PROJECT AND OMISSION LIMITS.
 2. ALL DAMAGE TO EXISTING PAVEMENT MARKINGS OUTSIDE THE REMOVAL LINE SHOWN ON THE PLANS SHALL BE REPLACED AT THE CONTRACTOR'S EXPENSE.
 3. FOR CROSSWALK MARKING DETAILS, SEE DISTRICT DETAIL TC-24 ON SHEET NO. 27.



LEGEND

- | | | |
|---|---|--|
| <ul style="list-style-type: none"> 1 THERMOPLASTIC PAVEMENT MARKING - LINE 4" (YELLOW SOLID LINE) 2 THERMOPLASTIC PAVEMENT MARKING - LINE 4" (DOUBLE YELLOW SOLID LINE) 3 THERMOPLASTIC PAVEMENT MARKING - LINE 4" (YELLOW - 6' DASH, 18' SKIP) 4 THERMOPLASTIC PAVEMENT MARKING - LINE 4" (WHITE LANE LINE - 6' DASH, 18' SKIP) 5 THERMOPLASTIC PAVEMENT MARKING - LINE 4" (WHITE SOLID LINE) | <ul style="list-style-type: none"> 6 THERMOPLASTIC PAVEMENT MARKING - LINE 6" (WHITE SOLID LINE) 7 THERMOPLASTIC PAVEMENT MARKING - LINE 6" (WHITE LANE LINE - 2' DASH, 6' SKIP) 8 THERMOPLASTIC PAVEMENT MARKING - LINE 8" (WHITE SOLID LINE) 9 THERMOPLASTIC PAVEMENT MARKING - LINE 12" (WHITE SOLID LINE) | <ul style="list-style-type: none"> 10 THERMOPLASTIC PAVEMENT MARKING - LINE 12" (WHITE DIAGONAL LINE) 11 THERMOPLASTIC PAVEMENT MARKING - LINE 12" (YELLOW DIAGONAL LINE) - 20' C-C 12 THERMOPLASTIC PAVEMENT MARKING - LINE 24" (WHITE STOP BAR) 13 THERMOPLASTIC PAVEMENT MARKING - LETTERS AND SYMBOLS (TYP) 14 PREFORMED PLASTIC PAVEMENT MARKING, TYPE B-LETTERS AND SYMBOLS 15 PREFORMED PLASTIC PAVEMENT MARKING, TYPE B-LINE 24" |
|---|---|--|

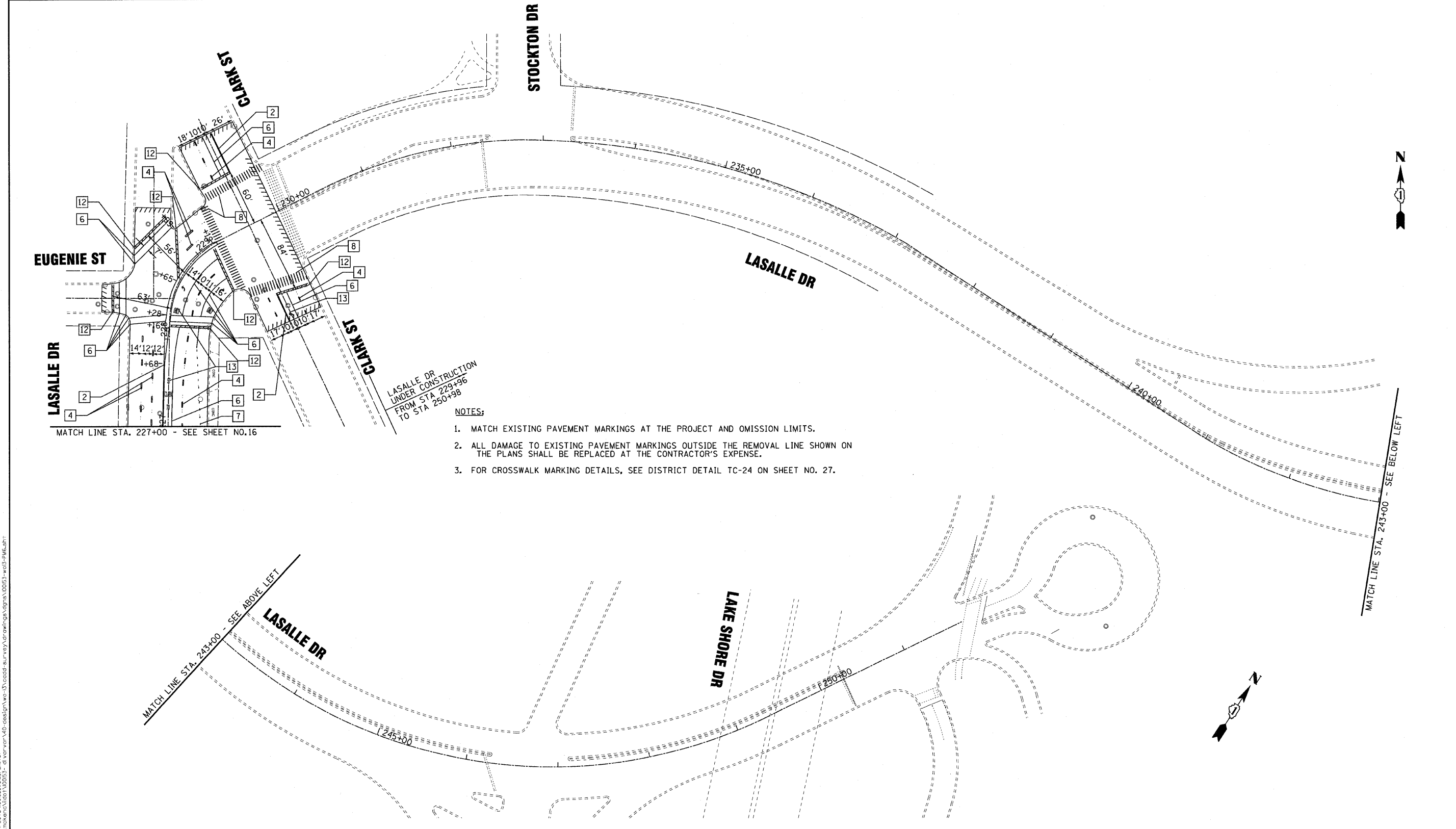
COPYRIGHT © 2011 BY BAXTER & WOODMAN, INC. ALL RIGHTS RESERVED. PROJECT NO. 100153-PM5. SHEET NO. 16. DATE: 12/17/10.



DESIGNED - CAC	REVISED - PER IDOT 2-3-11
DRAWN - CJC	REVISED - PER IDOT 2-18-11
CHECKED - RWL	REVISED -
DATE - 12-17-10	FILE - 100153-w013-PM5.sht

**STATE OF ILLINOIS
DEPARTMENT OF TRANSPORTATION**

NORTH AVENUE MILWAUKEE AVENUE TO CLARK STREET PAVEMENT MARKING PLAN		F.A.P. RTE. 307	SECTION 2010-140-RS	COUNTY COOK	TOTAL SHEETS 29	SHEET NO. 16
SCALE: 1" = 50'		STA. 214+00 TO STA. 227+00		FED. ROAD DIST. NO. 1 ILLINOIS FED. AID PROJECT		
					CONTRACT NO. 60N19	



- NOTES:**
1. MATCH EXISTING PAVEMENT MARKINGS AT THE PROJECT AND OMISSION LIMITS.
 2. ALL DAMAGE TO EXISTING PAVEMENT MARKINGS OUTSIDE THE REMOVAL LINE SHOWN ON THE PLANS SHALL BE REPLACED AT THE CONTRACTOR'S EXPENSE.
 3. FOR CROSSWALK MARKING DETAILS, SEE DISTRICT DETAIL TC-24 ON SHEET NO. 27.

LEGEND

- | | | |
|--|---|---|
| 1 THERMOPLASTIC PAVEMENT MARKING - LINE 4" (YELLOW SOLID LINE) | 6 THERMOPLASTIC PAVEMENT MARKING - LINE 6" (WHITE SOLID LINE) | 10 THERMOPLASTIC PAVEMENT MARKING - LINE 12" (WHITE DIAGONAL LINE) |
| 2 THERMOPLASTIC PAVEMENT MARKING - LINE 4" (DOUBLE YELLOW SOLID LINE) | 7 THERMOPLASTIC PAVEMENT MARKING - LINE 6" (WHITE LANE LINE - 2' DASH, 6' SKIP) | 11 THERMOPLASTIC PAVEMENT MARKING - LINE 12" (YELLOW DIAGONAL LINE) - 20' C-C |
| 3 THERMOPLASTIC PAVEMENT MARKING - LINE 4" (YELLOW - 6' DASH, 18' SKIP) | 8 THERMOPLASTIC PAVEMENT MARKING - LINE 8" (WHITE SOLID LINE) | 12 THERMOPLASTIC PAVEMENT MARKING - LINE 24" (WHITE STOP BAR) |
| 4 THERMOPLASTIC PAVEMENT MARKING - LINE 4" (WHITE LANE LINE - 6' DASH, 18' SKIP) | 9 THERMOPLASTIC PAVEMENT MARKING - LINE 12" (WHITE SOLID LINE) | 13 THERMOPLASTIC PAVEMENT MARKING - LETTERS AND SYMBOLS (TYP) |
| 5 THERMOPLASTIC PAVEMENT MARKING - LINE 4" (WHITE SOLID LINE) | | 14 PREFORMED PLASTIC PAVEMENT MARKING, TYPE B-LETTERS AND SYMBOLS |
| | | 15 PREFORMED PLASTIC PAVEMENT MARKING, TYPE B-LINE 24" |

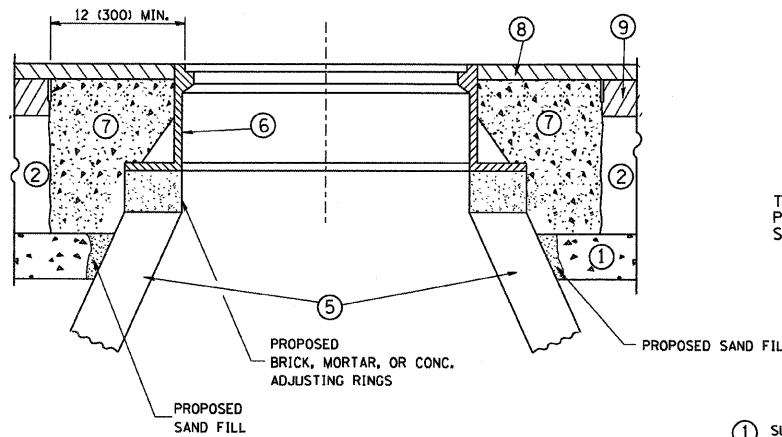
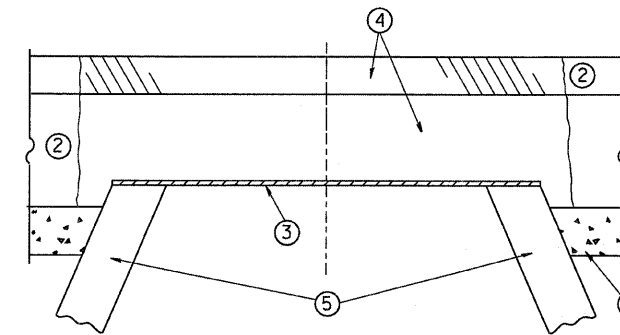
COPYRIGHT © 2011 BY BAXTER & WOODMAN, INC.
 STATE OF ILLINOIS - PROFESSIONAL DESIGN FIRM
 488 S. WOODMAN AVENUE, SUITE 200, CHICAGO, IL 60606
 312.467.1111



DESIGNED - CAC	REVISED - PER IDOT 2-3-11
DRAWN - CJC	REVISED - PER IDOT 2-18-11
CHECKED - RWL	REVISED -
DATE - 12-17-10	FILE - 100153-wo13-PM6.sht

**STATE OF ILLINOIS
DEPARTMENT OF TRANSPORTATION**

NORTH AVENUE MILWAUKEE AVENUE TO CLARK STREET PAVEMENT MARKING PLAN		F.A.P. RTE. 307	SECTION 2010-140-RS	COUNTY COOK	TOTAL SHEETS 29	SHEET NO. 17
SCALE: 1" = 50'		STA. 227+00 TO STA. 251+67		FED. ROAD DIST. NO. 1 ILLINOIS FED. AID PROJECT		
					CONTRACT NO. 60N19	



CONSTRUCTION PROCEDURES

STAGE 1 (BEFORE PAVEMENT MILLING)

- A) REMOVE A MINIMUM OF 12 (300) OF THE PAVEMENT FROM AROUND THE STRUCTURE.
- B) REMOVE THE EXISTING FRAME AND LID FROM THE STRUCTURE.
- C) COVER THE STRUCTURE OPENING WITH A 36 (900) DIAMETER METAL PLATE.
- D) BACKFILL WITH CRUSHED STONE AND A MINIMUM 1/2 (40) THICK HMA SURFACE MIX APPROVED BY THE ENGINEER.

STAGE 2 (AFTER PAVEMENT MILLING)

- A) REMOVE THE HMA SURFACE MIX AND CRUSHED STONE.
- B) INSTALL THE FRAME AND LID; ADJUST THE FRAME TO ITS FINAL SURFACE ELEVATION.
- C) THE SURROUNDING SPACE SHALL BE FILLED WITH CLASS SI CONCRETE, OR HMA SURFACE COURSE OR HMA BINDER COURSE TO THE ELEVATION OF THE SURFACE OF THE EXISTING BASE COURSE OR THE BINDER COURSE.

THE PROCEDURE EXPLAINED ABOVE SHALL CONFORM TO THE APPLICABLE PORTIONS OF SECTIONS 353, 406, 602, AND 603 OF THE STANDARD SPECIFICATIONS.

LEGEND

- ① SUB-BASE GRANULAR MATERIAL
- ② EXISTING PAVEMENT
- ③ 36 (900) DIAMETER METAL PLATE
- ④ PROPOSED CRUSHED STONE AND HMA SURFACE MIX
- ⑤ EXISTING STRUCTURE
- ⑥ FRAME AND LID (SEE NOTES)
- ⑦ CLASS SI CONCRETE, HMA SURFACE COURSE OR HMA BINDER COURSE
- ⑧ PROPOSED HMA SURFACE COURSE
- ⑨ PROPOSED HMA BINDER COURSE

LOCATION OF STRUCTURES:

THE CONTRACTOR WILL BE REQUIRED TO KEEP A RECORD OF THE LOCATIONS OF THE BURIED STRUCTURES ACCORDING TO THE STATION AND DISTANCE LEFT OR RIGHT OF THE CENTERLINE OF PAVEMENT. UPON COMPLETION OF THE WORK, THE CONTRACTOR WILL DELIVER THE RECORD TO THE ENGINEER.

BASIS OF PAYMENT: THIS WORK WILL BE PAID FOR AT THE CONTRACT UNIT PRICE PER EACH FOR "FRAMES AND LIDS TO BE ADJUSTED, SPECIAL" NEW FRAMES AND LIDS, WHEN SPECIFIED, WILL BE PAID FOR SEPARATELY.

NOTES:

EXISTING BROKEN FRAMES AND LIDS SHALL BE REMOVED AND DISPOSED OF BY THE CONTRACTOR AND SHALL BE REPLACED AS DIRECTED BY THE ENGINEER. REPLACEMENT FRAMES AND LIDS WILL BE PAID FOR IN ACCORDANCE WITH ARTICLE 109.04 OF THE STANDARD SPECIFICATIONS UNLESS A SEPARATE PAY ITEM HAS BEEN PROVIDED.

IF THE EXISTING LIDS ARE OPEN, THE FRAME WILL BE ADJUSTED TO THE ELEVATION OF THE MILLED PAVEMENT SURFACE PRIOR TO THE MILLING OPERATION. THE FRAME WILL NOT BE REMOVED AND COVERED BY THE METAL PLATE.

CITY OF CHICAGO CASTINGS ARE THE PROPERTY OF THE CITY AND THE CONTRACTOR SHALL NOTIFY THE CITY FOR REMOVAL AND DISPOSITION OF THE CASTINGS.

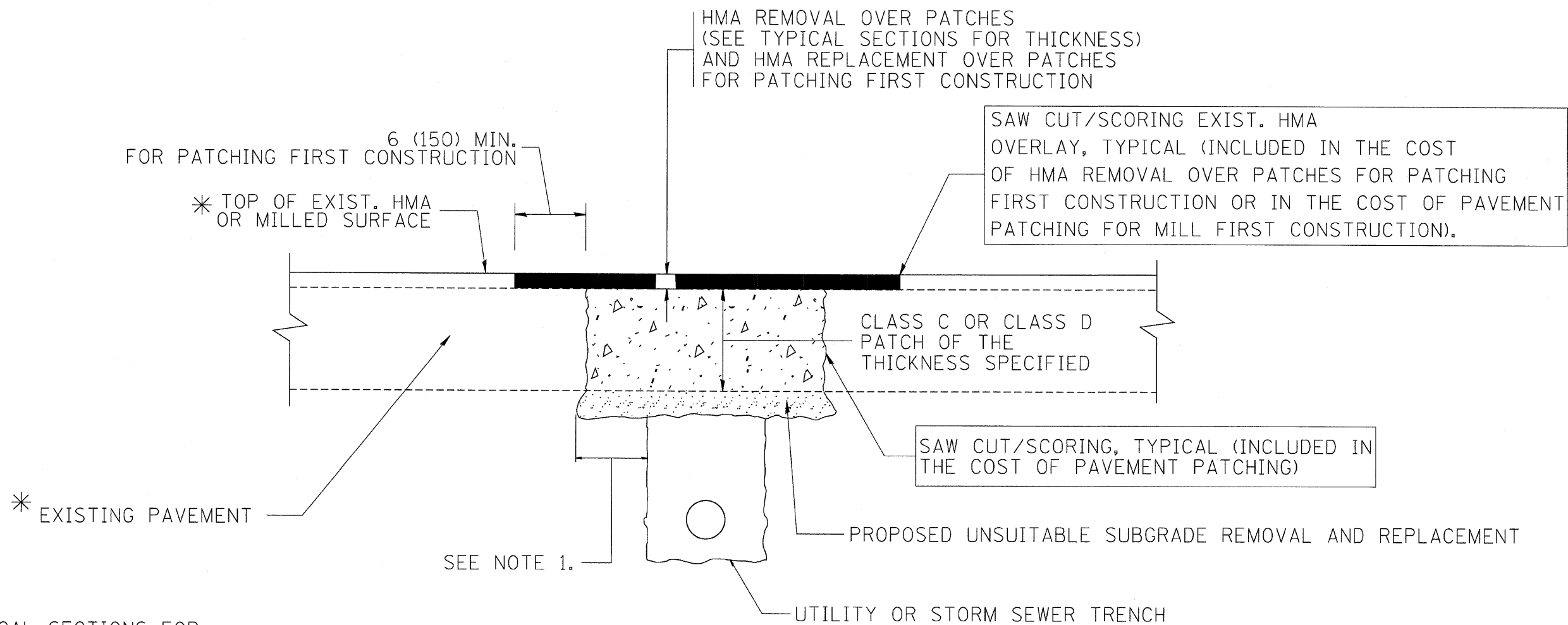
THE METAL PLATE USED TO COVER THE STRUCTURE SHALL REMAIN THE PROPERTY OF THE CONTRACTOR.

WHEN STRUCTURES ARE TO BE ADJUSTED OR RECONSTRUCTED, THE LOWERING AND RAISING OF THE FRAMES AND LIDS WILL NOT BE PAID FOR SEPARATELY BUT WILL BE INCLUDED IN THE COST OF THE CORRESPONDING PAY ITEM.

DETAILS FOR FRAMES AND LIDS ADJUSTMENT WITH MILLING

ALL DIMENSIONS ARE IN INCHES (MILLIMETERS) UNLESS OTHERWISE SHOWN

FILE NAME = W:\diststd\22x34\bd88.dgn	USER NAME = gegl1enobt	DESIGNED - R. SHAH	REVISED - R. SHAH 03-10-95	STATE OF ILLINOIS DEPARTMENT OF TRANSPORTATION	DETAILS FOR FRAMES AND LIDS ADJUSTMENT WITH MILLING		F.A.P. RTE. 307	SECTION 2010-140-RS	COUNTY COOK	TOTAL SHEETS 29	SHEET NO. 18	
		DRAWN -	REVISED - A. ABBAS 03-21-97		SCALE: NONE	SHEET NO. 1 OF 1 SHEETS	STA. TO STA.	BD600-03 (BD-8)		CONTRACT NO. 60N19		
		PLOT SCALE = 50.0000' / IN.	REVISED - R. WIEDEMAN 05-14-04									
		PLOT DATE = 1/4/2008	REVISED - R. BORO 01-01-07									



* SEE TYPICAL SECTIONS FOR THICKNESS AND MATERIALS

NOTES:

1. THE WIDTH OF THE FULL DEPTH PATCH OVER A TRENCH SHALL BE 12 (300) WIDER ON EACH SIDE OF THE TRENCH.
2. FOR METHOD OF MEASUREMENT AND BASIS OF PAYMENT, SEE RECURRING SPECIAL PROVISION "PATCHING WITH HOT-MIX ASPHALT OVERLAY REMOVAL".

SEQUENCE OF CONSTRUCTION (PATCHING FIRST)

1. REMOVE THE EXISTING HMA MATERIAL OVER THE AREA TO BE PATCHED.
2. REMOVE AND REPLACE WITH CLASS C OR D PATCH.
3. REPLACE HMA MATERIAL OVER THE AREA TO BE PATCHED.

SEQUENCE OF CONSTRUCTION (MILLING FIRST)

1. MILL HMA FIRST IF THERE IS AT LEAST 4 1/2 INCHES OR MORE OF HMA MATERIAL ON TOP OF THE EXISTING PAVEMENT OR IF THE PAVEMENT IS FULL DEPTH HMA. A MINIMUM OF 2 INCHES OF HMA MATERIAL SHALL BE IN PLACE AFTER MILLING.
2. REMOVE AND REPLACE WITH FULL DEPTH CLASS D PATCHES TO TOP OF MILLED SURFACE.

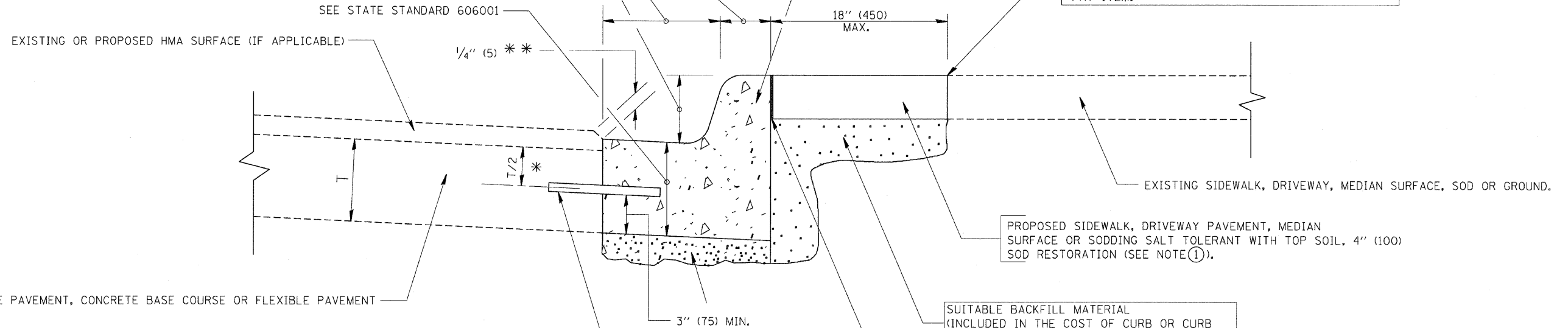
ALL DIMENSIONS ARE IN INCHES (MILLIMETERS) UNLESS OTHERWISE SHOWN.

FILE NAME = c:\projects\diststd22x34\bd22.dgn	USER NAME = bauerdl	DESIGNED - R. SHAH	REVISED - A. ABBAS 04-27-98	STATE OF ILLINOIS DEPARTMENT OF TRANSPORTATION	PAVEMENT PATCHING FOR HMA SURFACED PAVEMENT	F.A.P. RTE. 307	SECTION 2010-140-RS	COUNTY COOK	TOTAL SHEETS 29	SHEET NO. 19	
PLOT SCALE = 50.000' / IN.	CHECKED -	REVISED - R. BORO 01-01-07	REVISED - R. BORO 09-04-07			BD400-04 (BD-22)		CONTRACT NO. 60N19			
PLOT DATE = 10/27/2008	DATE - 10-25-94	REVISED - K. ENG 10-27-08	SCALE: NONE			SHEET NO. 1 OF 1 SHEETS	STA. TO STA.	FED. ROAD DIST. NO. 1 ILLINOIS FED. AID PROJECT			

VARIABLE - TO MEET EXISTING DIMENSIONS AND FIELD CONDITIONS (SEE NOTE ②)

PROP. CONC. CURB OR CURB AND GUTTER REPLACEMENT IN ACCORDANCE WITH STATE STANDARD 606001. (SEE NOTE ②)

SAW CUT FULL DEPTH - INCLUDED IN THE COST OF SIDEWALK, DRIVEWAY OR MEDIAN SURFACE REMOVAL PAY ITEM.



EXISTING CONCRETE PAVEMENT, CONCRETE BASE COURSE OR FLEXIBLE PAVEMENT

* 3" (75) MINIMUM FROM TOP AND BOTTOM OF THE CONCRETE PAVEMENT OR BASE COURSE.

** IF THE FINAL SURFACE OF THE PAVEMENT IS CONCRETE, THE GUTTER IS TO BE FLUSH WITH THE PAVEMENT.

NOTE: ① SIDEWALK, DRIVEWAY PAVEMENT OR MEDIAN SURFACE SHALL BE SIMILAR TO THE MATERIAL BEING REMOVED AND WILL BE PAID FOR SEPARATELY.

SODDING, SALT TOLERANT AND TOP SOIL, FURNISH AND PLACE 4" WILL BE PAID FOR SEPARATELY,

② FERTILIZER FOR THE PLACEMENT OF THE SOD IS NOT REQUIRED

③ CURB OR CURB AND GUTTER REPLACEMENT SHALL MATCH THE SHAPE OF THE EXISTING CURB OR CURB AND GUTTER UNLESS OTHERWISE SPECIFIED.

④ FOR CURB OR CURB AND GUTTER REMOVAL AND REPLACEMENT ADJACENT TO FLEXIBLE PAVEMENT DELETE EPOXY COATED TIE BARS.

⑤ LONGITUDINAL BARS, IF ENCOUNTERED IN THE EXISTING CURB OR CURB AND GUTTER, ARE NOT TO BE REPLACED. CUTTING AND REMOVING LONGITUDINAL BARS SHALL BE INCLUDED IN THE COST OF CURB OR CURB AND GUTTER REMOVAL AND REPLACEMENT.

⑥ THE COST OF HMA SURFACE REMOVAL IN THE EXISTING GUTTER FLAG SHALL BE INCLUDED IN THE COST OF THE CURB AND GUTTER REMOVAL AND REPLACEMENT.

⑦ THE REMOVAL AND REPLACEMENT OF THE EXISTING CURB OR CURB AND GUTTER SHALL BE DONE IN ACCORDANCE WITH THE APPLICABLE PORTIONS OF SECTION 440 AND 606 OF THE STANDARD SPECIFICATIONS.

⑧ THE LOCATIONS OF REMOVAL AND REPLACEMENT OF EXISTING CURB OR CURB AND GUTTER SHALL BE DETERMINED BY THE RESIDENT ENGINEER AT THE TIME OF CONSTRUCTION.

SUITABLE BACKFILL MATERIAL (INCLUDED IN THE COST OF CURB OR CURB AND GUTTER REMOVAL AND REPLACEMENT)

PROPOSED 3/4" (20) PREFORMED EXPANSION JOINT AT CONCRETE SIDEWALKS, DRIVEWAYS, AND MEDIANS. (INCLUDED IN THE COST OF CURB OR CURB AND GUTTER REMOVAL AND REPLACEMENT.)

UNSUITABLE SUB-BASE MATERIAL TO BE REMOVED, IF DIRECTED BY THE ENGINEER, SHALL BE REPLACED WITH EITHER SUB-BASE GRANULAR MATERIAL, TYPE B OR ADDITIONAL THICKNESS OF CONCRETE.

REMOVAL AND REPLACEMENT 4" (100) OR LESS IS INCLUDED IN THE COST OF CURB OR CURB AND GUTTER REMOVAL AND REPLACEMENT.

REMOVAL AND REPLACEMENT IN EXCESS OF 4" (100) WILL BE PAID FOR IN ACCORDANCE WITH ARTICLE 109.04 OF THE STANDARD SPECIFICATIONS.

PROPOSED #6 (20) EPOXY COATED TIE BARS 24" (600) LONG AT 24" (600) CENTERS WILL NOT BE PAID FOR SEPARATELY. DELETE EPOXY COATED TIE BARS IF EXISTING TIE BARS ARE USABLE AS DETERMINED BY THE ENGINEER. (SEE NOTE ③).

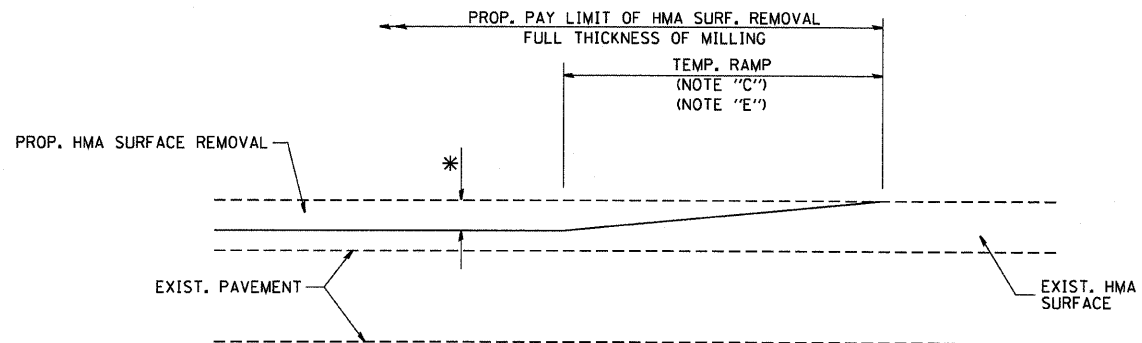
BASIS OF PAYMENT:

THIS WORK WILL BE PAID FOR AT THE CONTRACT UNIT PRICE PER FOOT (METER) FOR "CURB REMOVAL AND REPLACEMENT" OR "COMBINATION CONCRETE CURB AND GUTTER REMOVAL AND REPLACEMENT".

CURB OR CURB AND GUTTER REMOVAL AND REPLACEMENT

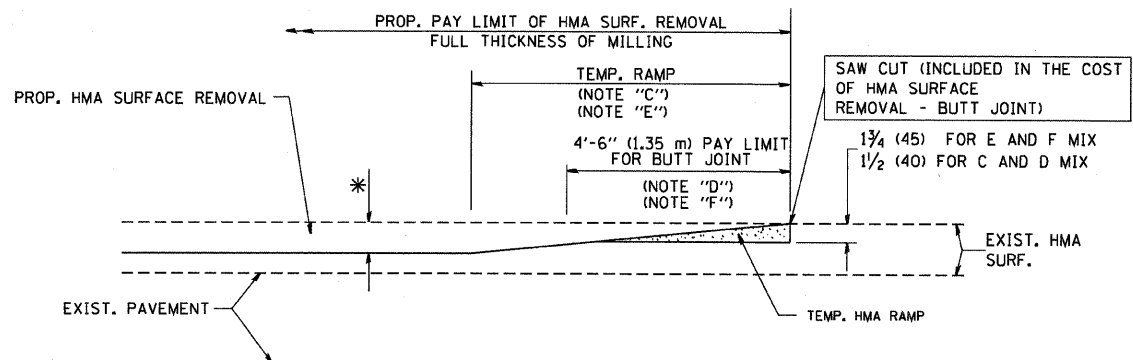
ALL DIMENSIONS ARE IN INCHES (MILLIMETERS) UNLESS OTHERWISE SHOWN.

FILE NAME =	USER NAME = drivakosgn	DESIGNED - A. HOUSEH	REVISED - R. SHAH 10-03-96	STATE OF ILLINOIS DEPARTMENT OF TRANSPORTATION	CURB OR CURB AND GUTTER REMOVAL AND REPLACEMENT	F.A.P. RTE. 307	SECTION 2010-140-RS	COUNTY COOK	TOTAL SHEETS 29	SHEET NO. 20	
os:\pwork\pwidot\drivakosgn\08108315\bd24.dgn	DRAWN -	REVISED - A. ABBAS 03-21-97	REVISED - M. GOMEZ 01-22-01			SCALE: NONE	SHEET NO. 1 OF 1 SHEETS	STA. TO STA.	BD600-06 (BD-24)		CONTRACT NO. 60N19
PLOT SCALE = 50,000' / IN.	CHECKED -	REVISED - R. BORO 12-15-09				FED. ROAD DIST. NO. 1 ILLINOIS FED. AID PROJECT					
PLOT DATE = 12/15/2009	DATE - 03-11-94										



MILLED TEMPORARY RAMP
(FOR BUTT JOINT AND HMA TAPER SEE DETAIL BELOW)

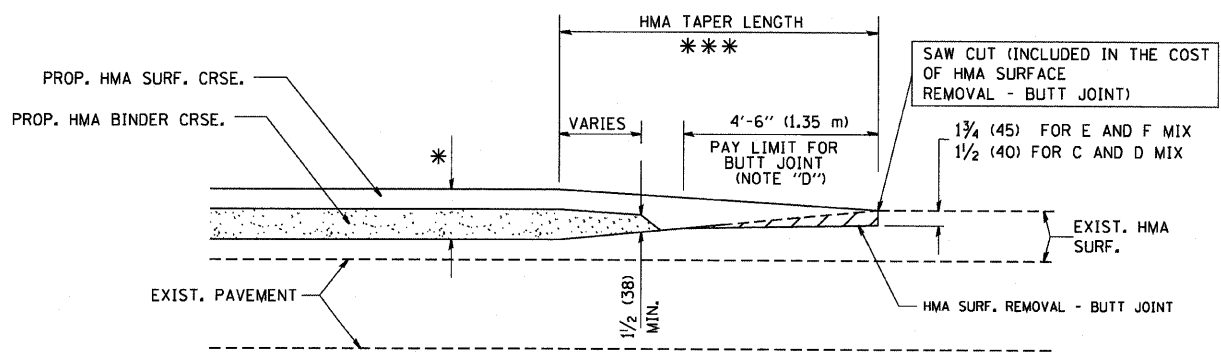
OPTION 1



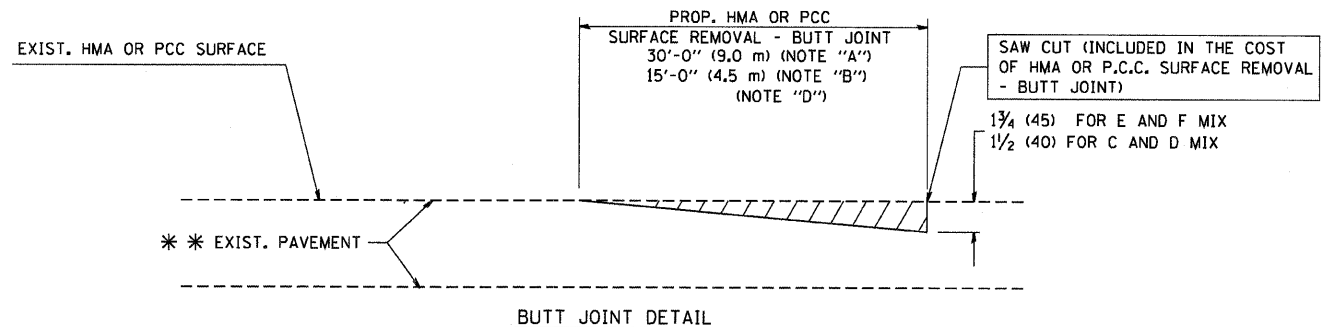
HMA CONSTRUCTED TEMPORARY RAMP
(FOR BUTT JOINT AND HMA TAPER SEE DETAIL BELOW)

OPTION 2

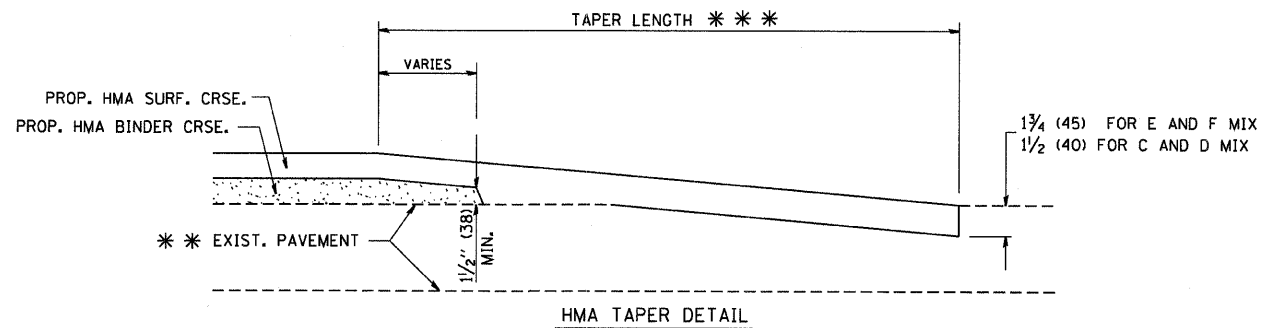
TYPICAL TEMPORARY RAMP



BUTT JOINT AND HMA TAPER
TYPICAL BUTT JOINT AND HMA TAPER FOR MILLING AND RESURFACING



BUTT JOINT DETAIL



HMA TAPER DETAIL

TYPICAL BUTT JOINT AND HMA TAPER FOR RESURFACING ONLY

** PC CONCRETE, HMA OR HMA RESURFACED PAVEMENT.

NOTES

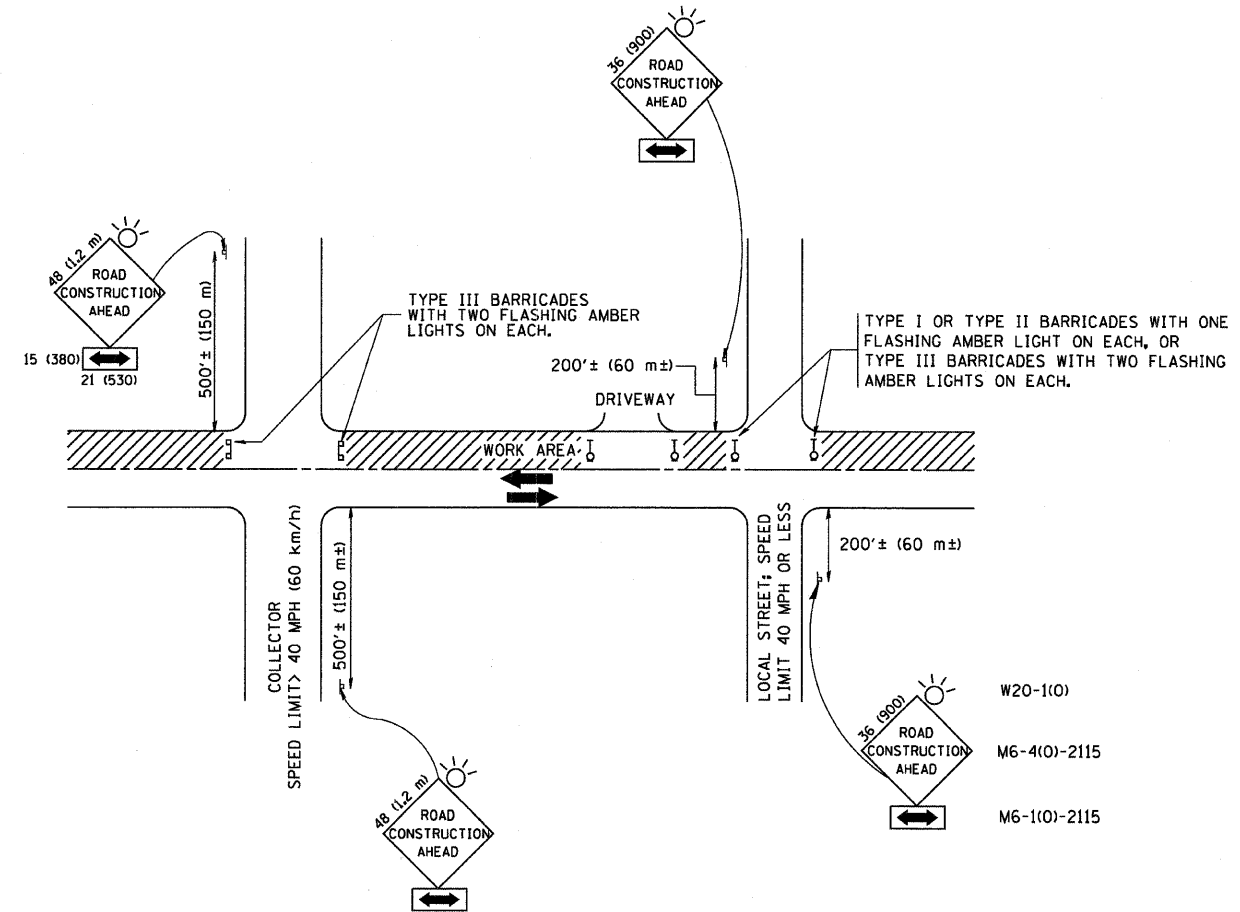
- A: MAINLINE ROADWAYS AND MAJOR SIDE ROADS.
- B: MINOR SIDE ROADS.
- C: THE TEMP. RAMP SHALL BE CONSTRUCTED IMMEDIATELY UPON REMOVAL OF THE EXISTING HMA SURFACE.
- D: THE BUTT JOINT SHALL BE CONSTRUCTED IMMEDIATELY PRIOR TO PLACING THE PROPOSED HMA COURSES.
- E: TAPER THE TEMP. RAMP AT A RATE OF 3'-0" (900 mm) PER 1 INCH (25 mm) OF MILLING THICKNESS.
- F: INSTALLATION AND REMOVAL OF THE 4'-6" (1.35 m) TEMP. RAMP IS INCLUDED IN COST OF HMA SURFACE REMOVAL - BUTT JOINT
- G: SEE ARTICLE 406.08 AND 406.14 OF THE STANDARD SPECIFICATIONS FOR "HMA AND/OR PCC SURFACE REMOVAL, BUTT JOINT".
- ** SEE TYPICAL SECTIONS FOR MILLING THICKNESS.
- *** 20'-0" (6.1 m) PER 1 (25) RESURFACING (NOTE "A")
10'-0" (3.0 m) PER 1 (25) RESURFACING (NOTE "B")

BASIS OF PAYMENT:

THE BUTT JOINT WILL BE PAID FOR AT THE CONTRACT UNIT PRICE PER SQUARE YARD (SQUARE METER) FOR "HOT-MIX ASPHALT SURFACE REMOVAL - BUTT JOINT" OR FOR "PORTLAND CEMENT CONCRETE SURFACE REMOVAL - BUTT JOINT".

ALL DIMENSIONS ARE IN INCHES (MILLIMETERS) UNLESS OTHERWISE SHOWN.

FILE NAME = W:\drtstd\22x34\bd32.dgn	USER NAME = gaglianob	DESIGNED - M. DE YONG	REVISED - R. SHAH 10-25-94	STATE OF ILLINOIS DEPARTMENT OF TRANSPORTATION	BUTT JOINT AND HMA TAPER DETAILS		F.A.P. RTE. 307	SECTION 2010-140-RS	COUNTY COOK	TOTAL SHEETS 29	SHEET NO. 21
PLOT SCALE = 50.0000' / IN.	CHECKED -	DATE - 06-13-90	REVISED - A. ABBAS 03-21-97		SCALE: NONE	SHEET NO. 1 OF 1 SHEETS	STA. TO STA.	BD400-05 BD32		CONTRACT NO. 60N19	
PLOT DATE = 1/4/2008			REVISED - M. GOMEZ 04-06-01					FED. ROAD DIST. NO. 1 ILLINOIS FED. AID PROJECT			
			REVISED - R. BORO 01-01-07								



TRAFFIC CONTROL AND PROTECTION FOR SIDE ROADS, INTERSECTIONS, AND DRIVEWAYS

NOTES:

- A. FOR NO LANE RESTRICTION ON THE SIDE ROAD OR DRIVEWAYS**
- SIDE ROAD WITH A SPEED LIMIT OF 40 MPH (60 km/h) OR LESS AS SHOWN ON THE DRAWING AND AS DIRECTED BY THE ENGINEER:
 - ONE ROAD CONSTRUCTION AHEAD SIGN 36 x 36 (900x900) WITH A FLASHER AND FLAG MOUNTED ON IT APPROXIMATELY 200' (60 m) IN ADVANCE OF THE MAIN ROUTE.
 - THE CLOSED PORTION OF THE MAIN ROUTE SHALL BE PROTECTED BY BLOCKING WITH TYPE I, TYPE II OR TYPE III BARRICADES, 1/3 OF THE CROSS SECTION OF THE CLOSED PORTION.
 - SIDE ROAD WITH A SPEED LIMIT GREATER THAN 40 MPH (60 km/h) AS SHOWN ON THE DRAWING AND AS DIRECTED BY THE ENGINEER:
 - ONE ROAD CONSTRUCTION AHEAD SIGN 48 x 48 (1.2 m x 1.2 m) WITH A FLASHER MOUNTED ON IT APPROXIMATELY 500' (150 m) IN ADVANCE OF THE MAIN ROUTE.
 - THE CLOSED PORTION OF THE MAIN ROUTE SHALL BE PROTECTED BY BLOCKING WITH TYPE III BARRICADES, 1/2 OF THE CROSS SECTION OF THE CLOSED PORTION.
 - WHEN THE SIDE ROAD LIES BETWEEN THE BEGINNING OF THE MAINLINE SIGNING AND THE WORK ZONE, A SINGLE HEADED ARROW (M6-1) SHALL BE USED IN LIEU OF THE DOUBLE HEADED ARROW (M6-4).
- B. FOR A LANE CLOSURE ON A SIDE ROAD OR DRIVEWAY:**
- USE APPLICABLE PORTIONS OF THE TYPICAL APPLICATION OF TRAFFIC CONTROL DEVICES (STD. 701501, STD. 701606 OR THE APPROPRIATE STANDARD). THE SPACING OF SIGNS AND BARRICADES SHALL BE ADJUSTED FOR FIELD CONDITIONS AS DIRECTED BY THE ENGINEER. THE DIRECTIONAL ARROW SHALL BE COVERED OR REMOVED WHEN NO LONGER CONSISTENT WITH THE SIDE ROAD LANE CLOSURE.
- C. ADVANCE WARNING SIGNS ARE TO BE OMITTED ON DRIVEWAY UNLESS OTHERWISE NOTED.**
- D. THE TRAFFIC CONTROL AND PROTECTION FOR SIDE ROADS, INTERSECTIONS, AND DRIVEWAYS SHALL BE INCIDENTAL TO THE COST OF SPECIFIED TRAFFIC CONTROL STANDARDS OR ITEMS.**

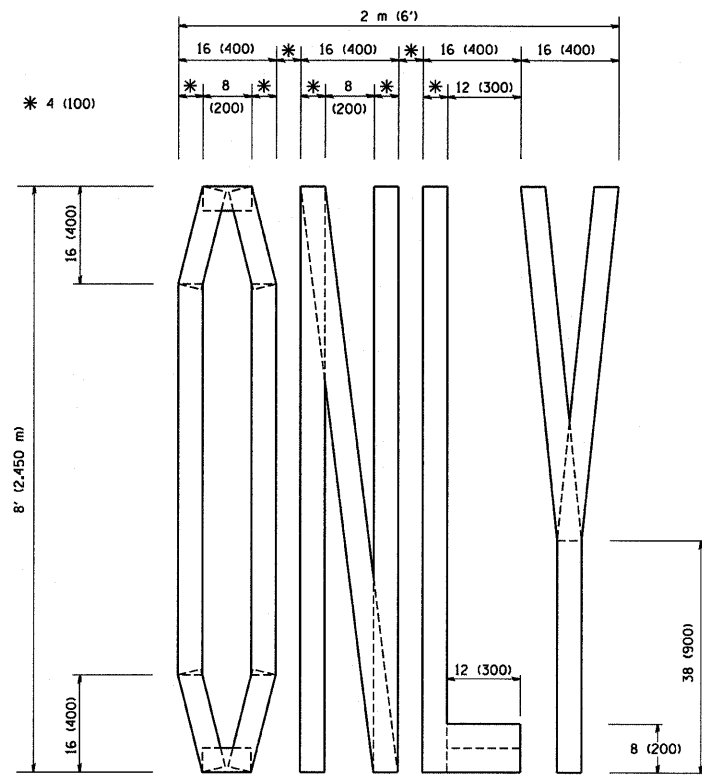
All dimensions are in millimeters (inches) unless otherwise shown.

FILE NAME = W:\diststd\22x34\1018.dgn	USER NAME = gaglianobt	DESIGNED - LHA	REVISED - J. OBERLE 10-18-95
		DRAWN -	REVISED - A. HOUSEH 03-06-96
		CHECKED -	REVISED - A. HOUSEH 10-15-96
		DATE - 06-89	REVISED - T. RAMMACHER 01-06-00

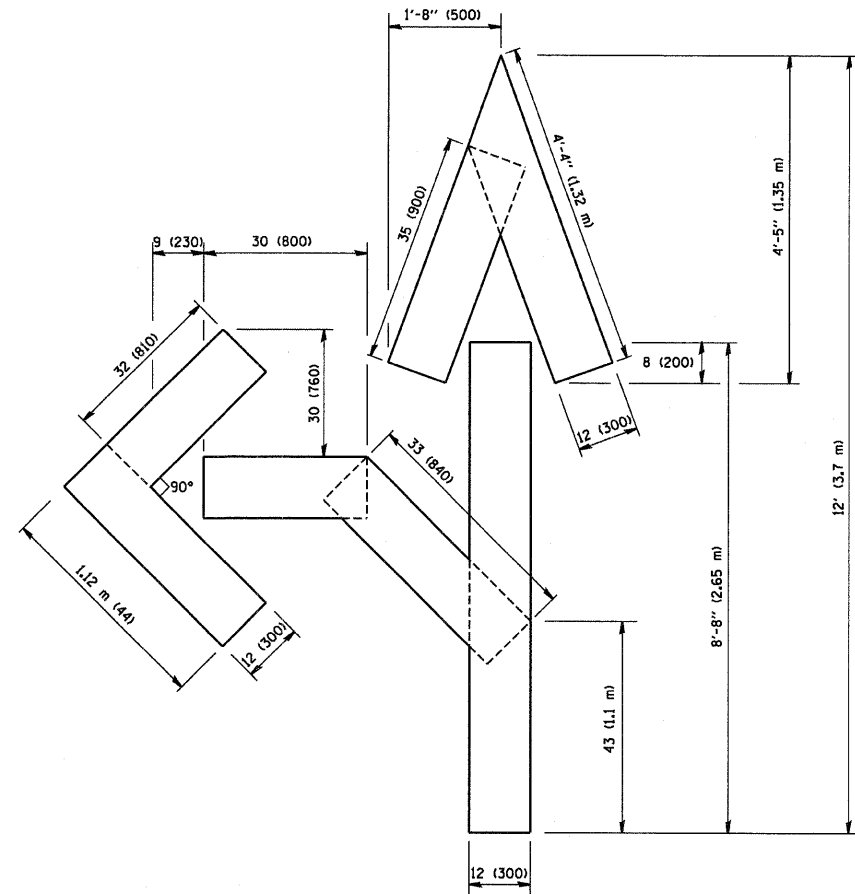
**STATE OF ILLINOIS
DEPARTMENT OF TRANSPORTATION**

TRAFFIC CONTROL AND PROTECTION FOR SIDE ROADS, INTERSECTIONS, AND DRIVEWAYS			
SCALE: NONE	SHEET NO. 1 OF 1 SHEETS	STA.	TO STA.

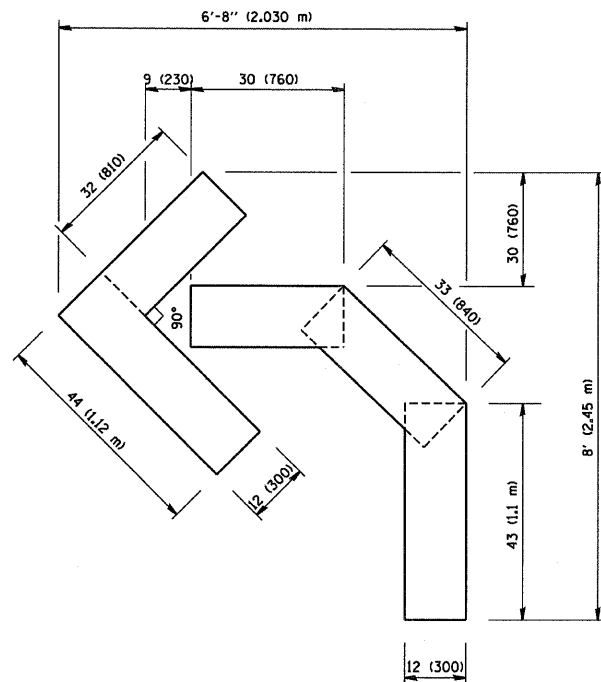
F.A.P. RTE.	SECTION	COUNTY	TOTAL SHEETS	SHEET NO.
307	2010-140-RS	COOK	29	23
TC-10			CONTRACT NO. 60N19	
FED. ROAD DIST. NO. 1 ILLINOIS FED. AID PROJECT				



QUANTITY
 4 (100) LINE = 64.1 ft. (19.7 m)
 21.1 sq. ft. (1.97 sq. m)



QUANTITY
 4 (100) LINE = 82.5 ft. (25.3 m)
 27.5 sq. ft. (2.53 sq. m)



QUANTITY
 4 (100) LINE = 45.5 ft. (13.9 m)
 15.2 sq. ft. (1.39 sq. m)

All dimensions are in inches (millimeters) unless otherwise shown.

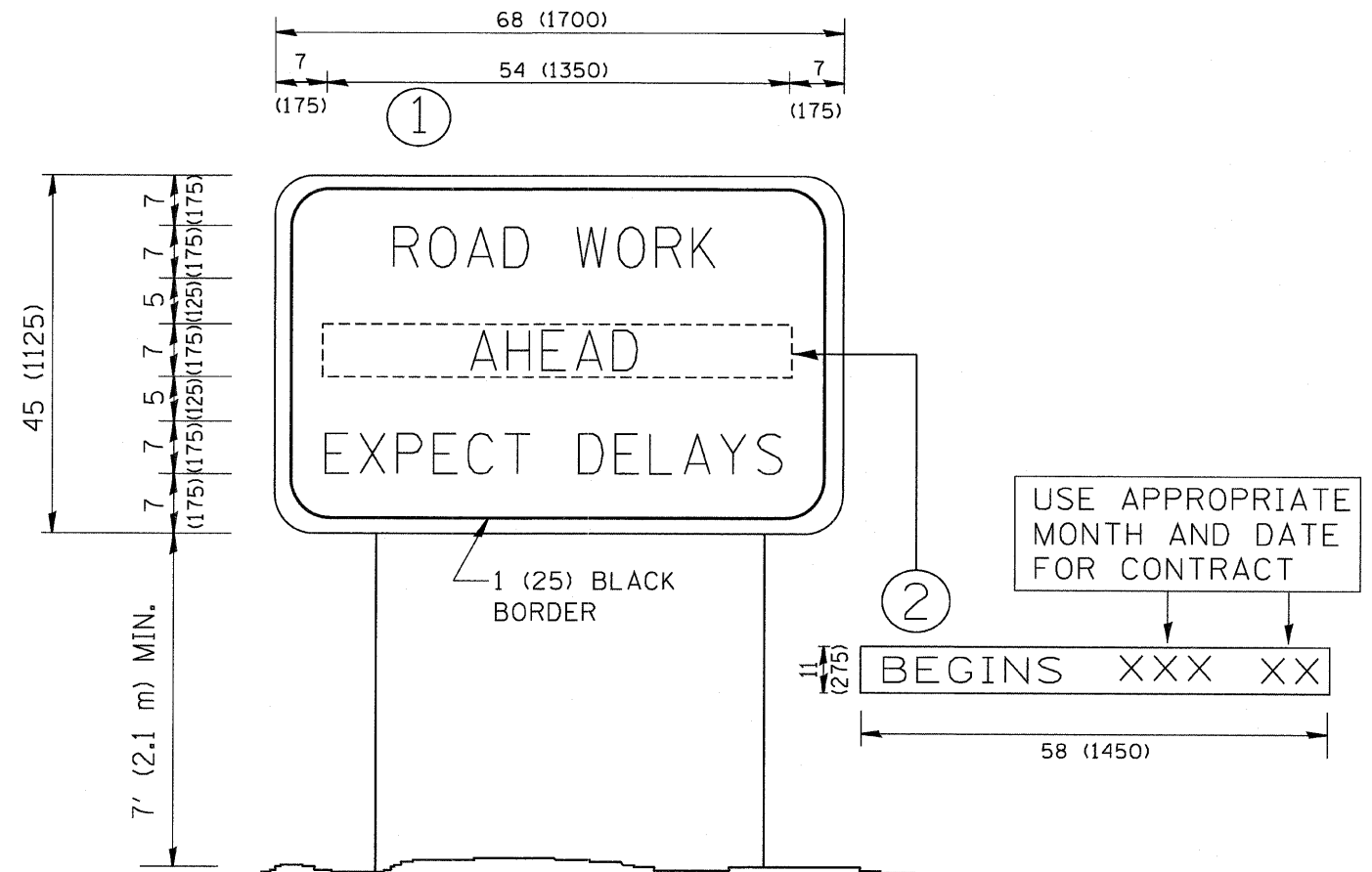
FILE NAME = W:\diststd\22x34\16.dgn	USER NAME = gajlionobt	DESIGNED -	REVISED - T. RAMMACHER 06-05-96
		DRAWN -	REVISED - T. RAMMACHER 11-04-97
		CHECKED -	REVISED - T. RAMMACHER 03-02-98
		DATE - 09-18-94	REVISED - E. GOMEZ 08-28-00

STATE OF ILLINOIS
 DEPARTMENT OF TRANSPORTATION

PAVEMENT MARKING LETTERS AND SYMBOLS
 FOR TRAFFIC STAGING

SCALE: NONE SHEET NO. 1 OF 1 SHEETS STA. TO STA.

F.A.P. RTE. 307	SECTION 2010-140-RS	COUNTY COOK	TOTAL SHEETS 29	SHEET NO. 25
TC-16			CONTRACT NO. 60N19	
FED. ROAD DIST. NO. 1 ILLINOIS FED. AID PROJECT				

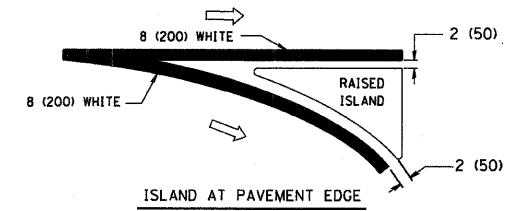
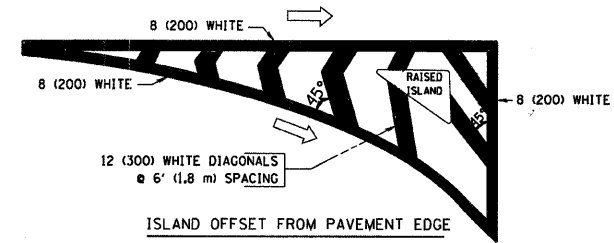
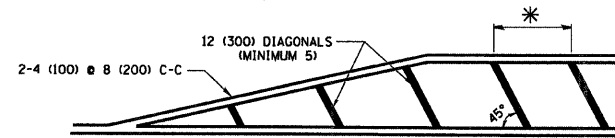
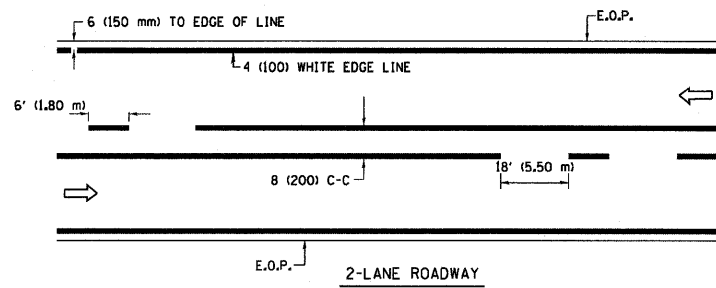


NOTES:

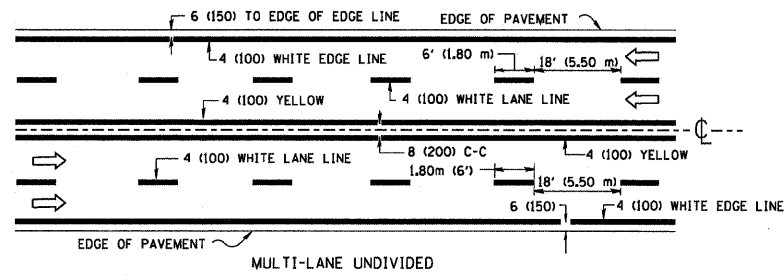
1. USE BLACK LETTERING ON ORANGE BACKGROUND.
2. ERECT SIGNS IN ADVANCE OF THE LOCATION FOR THE "ROAD CONSTRUCTION AHEAD" SIGN AT LOCATIONS AS DIRECTED BY THE ENGINEER.
3. ERECT SIGN ① WITH INSTALLED PANEL ② ONE WEEK PRIOR TO THE START OF CONSTRUCTION.
4. REMOVE PANEL ② SOON AFTER THE START OF CONSTRUCTION.
5. SEE SPECIAL PROVISION FOR "TEMPORARY INFORMATION SIGNING" FOR ADDITIONAL INFORMATION.
6. ONE SIGN ASSEMBLY EQUALS 25.70 SQ. FT. (2.3 SQ. M.)
7. SHALL BE PAID FOR AS TEMPORARY INFORMATION SIGNING.

ALL DIMENSIONS ARE IN INCHES (MILLIMETERS) UNLESS OTHERWISE SHOWN.

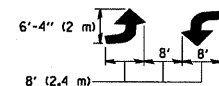
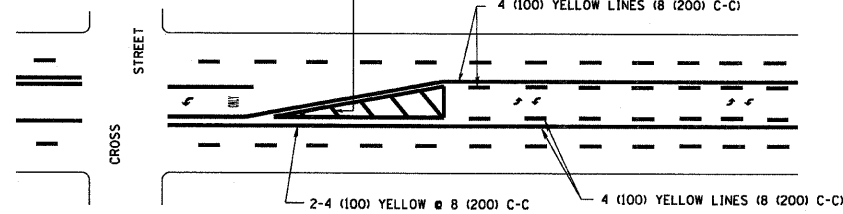
FILE NAME = W:\diststd\22x34\to22.dgn	USER NAME = geglionabt	DESIGNED -	REVISED - R. MIRS 09-15-97	STATE OF ILLINOIS DEPARTMENT OF TRANSPORTATION	ARTERIAL ROAD INFORMATION SIGN			F.A.S. RTE.	SECTION	COUNTY	TOTAL SHEETS	SHEET NO.
	PLOT SCALE = 50,000' / IN.	DRAWN -	REVISED - R. MIRS 12-11-97					307	2010-140-RS	COOK	29	26
	PLOT DATE = 1/4/2008	CHECKED -	REVISED - T. RAMMACHER 02-02-99					TC-22		CONTRACT NO. 60N19		
		DATE -	REVISED - C. JUCIUS 01-31-07					SCALE: NONE	SHEET NO. 1 OF 1 SHEETS	STA.	TO STA.	FED. ROAD DIST. NO. 1 ILLINOIS FED. AID PROJECT



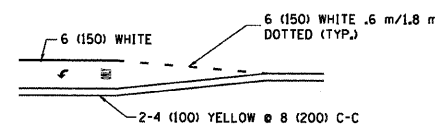
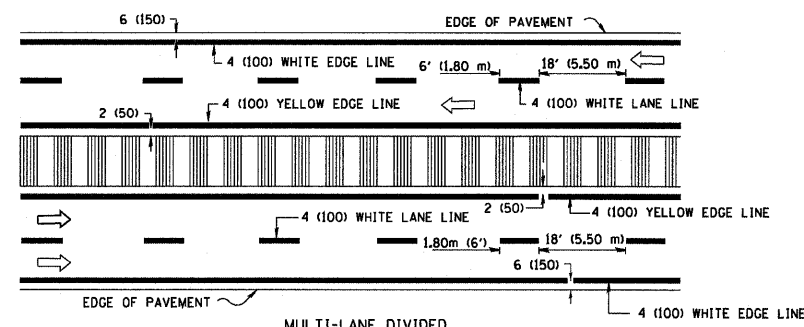
TYPICAL ISLAND MARKING



PAINTED MEDIANS



TYPICAL PAINTED MEDIAN MARKING



FULL SIZE LETTERS 8' (2.4 m) AND ARROWS SHALL BE USED.
 AREA = 15.8 SQ. FT. (1.47 m²) ONLY AREA = 22.9 SQ. FT. (2.13 m²)
 * TURN LANES IN EXCESS OF 400' (120 m) IN LENGTH MAY HAVE AN ADDITIONAL SET OF ARROW - "ONLY" INSTALLED MIDWAY BETWEEN THE OTHER TWO SETS OF ARROW - "ONLY".

TYPICAL LEFT (OR RIGHT) TURN LANE

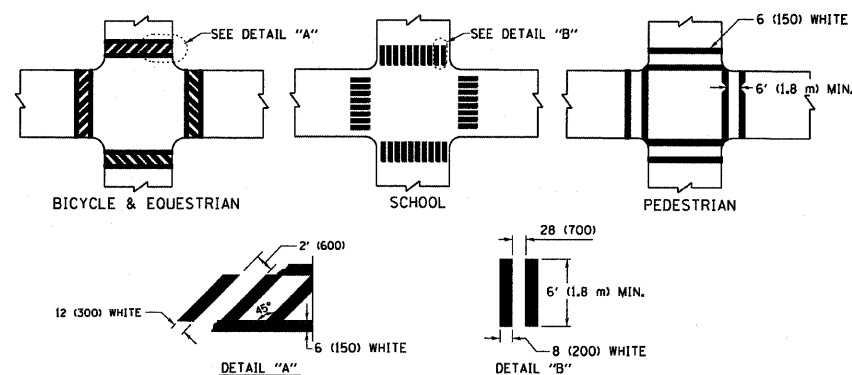
TYPICAL TURN LANE MARKING

TYPE OF MARKING	WIDTH OF LINE	PATTERN	COLOR	SPACING / REMARKS
CENTERLINE ON 2 LANE PAVEMENT	4 (100)	SKIP-DASH	YELLOW	6' (1.80 m) LINE WITH 18' (5.50 m) SPACE
CENTERLINE ON MULTI-LANE UNDIVIDED PAVEMENT	2 @ 4 (100)	SOLID	YELLOW	8 (200) C-C
NO PASSING ZONE LINES: FOR ONE DIRECTION FOR BOTH DIRECTIONS	4 (100) 2 @ 4 (100)	SOLID SOLID	YELLOW YELLOW	8 (200) C-C
LANE LINES	4 (100) 5 (125) ON FREEWAYS	SKIP-DASH SKIP-DASH	WHITE WHITE	6' (1.80 m) LINE WITH 18' (5.50 m) SPACE
DOTTED LINES (EXTENSIONS OF CENTER, LANE OR TURN LANE MARKINGS)	SAME AS LINE BEING EXTENDED	SKIP-DASH	SAME AS LINE BEING EXTENDED	2' (600) LINE WITH 6' (1.8) SPACE
EDGE LINES	4 (100)	SOLID	YELLOW-LEFT WHITE-RIGHT	OUTLINE MOUNTABLE MEDIANS IN YELLOW; EDGE LINES ARE NOT USED NEXT TO BARRIER CURB
TURN LANE MARKINGS	6 (150) LINE; FULL SIZE LETTERS & SYMBOLS (8' (2.4 m))	SOLID	WHITE	SEE TYPICAL TURN LANE MARKING DETAIL
TWO WAY LEFT TURN MARKING	2 @ 4 (100) EACH DIRECTION 8' (2.4 m) LEFT ARROW	SKIP-DASH AND SOLID IN PAIRS	YELLOW WHITE	6' (1.8 m) LINE WITH 18' (5.50 m) SPACE FOR SKIP-DASH; 8 (200) C-C BETWEEN SOLID LINE AND SKIP-DASH LINE SEE TYPICAL TWO-WAY LEFT TURN MARKING DETAIL
CROSSWALK LINES (PEDESTRIAN) A. DIAGONALS (BIKE & EQUESTRIAN) B. LONGITUDINAL BARS (SCHOOL)	2 @ 6 (150) 12 (300) @ 45° 8 (200) @ 90°	SOLID SOLID SOLID	WHITE WHITE WHITE	NOT LESS THAN 6' (1.8 m) APART 2' (600) APART 2'-4" (700) APART SEE TYPICAL CROSSWALK MARKING DETAILS.
STOP LINES	24 (600)	SOLID	WHITE	PLACE 4' (1.2 m) IN ADVANCE OF AND PARALLEL TO CROSSWALK, IF PRESENT. OTHERWISE, PLACE AT DESIRED STOPPING POINT, PARALLEL TO CROSSROAD CENTERLINE, WHERE POSSIBLE
PAINTED MEDIANS	2 @ 4 (100) WITH 12 (300) DIAGONALS @ 45°	SOLID	YELLOW; TWO WAY TRAFFIC WHITE; ONE WAY TRAFFIC	8 (200) C-C FOR THE DOUBLE LINE SEE TYPICAL PAINTED MEDIAN MARKING.
CORE MARKING AND CHANNELIZING LINES	8 (200) WITH 12 (300) DIAGONALS @ 45°	SOLID	WHITE	DIAGONALS; 20' (6.1 m) (LESS THAN 30 MPH (50 km/h))
RAILROAD CROSSING	24 (600) TRANSVERSE LINES; "RR" IS 6' (1.8 m) LETTERS; 16 (400) LINE FOR "X"	SOLID	WHITE	SEE STATE STANDARD 780001 AREA OF: "R"=3.6 SQ. FT. (0.33m ²) EACH "X"=54.0 SQ. FT. (5.0 m ²)

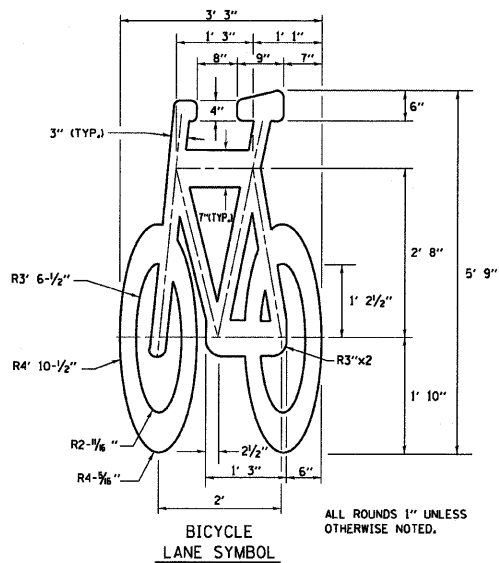
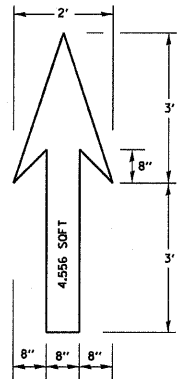
FOR FURTHER DETAILS ON PAVEMENT MARKING REFER TO STREET MARKING STANDARDS, PRINTED BY CITY OF CHICAGO, DEPARTMENT OF TRANSPORTATION, BUREAU OF TRAFFIC.

ALL DIMENSIONS ARE IN INCHES (MILLIMETERS) UNLESS OTHERWISE SHOWN.

TYPICAL LANE AND EDGE LINE MARKING

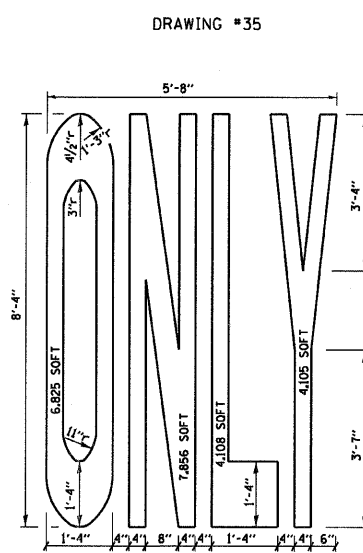
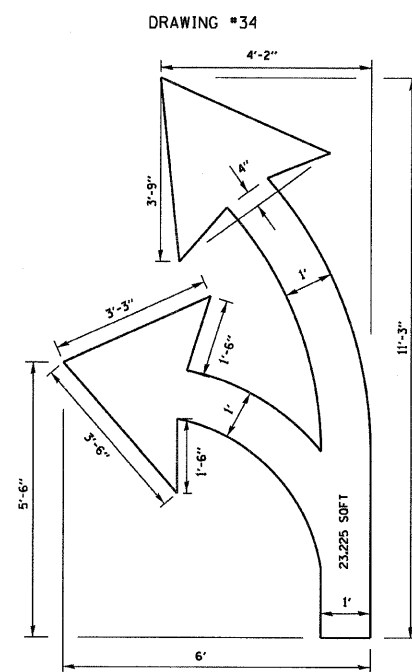
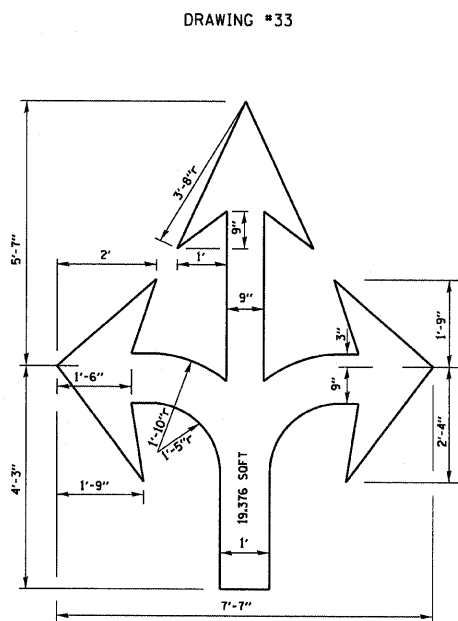
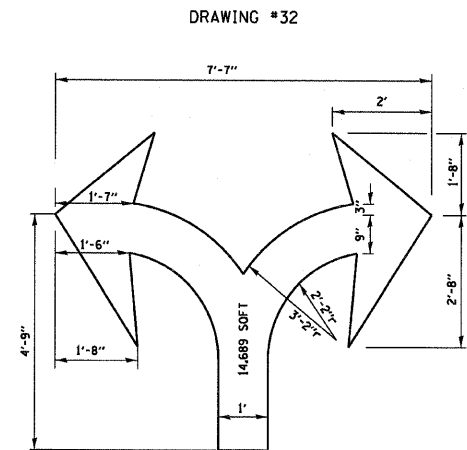
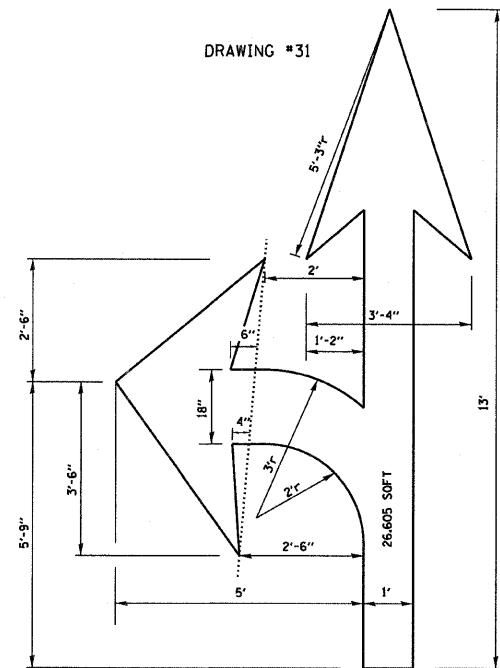
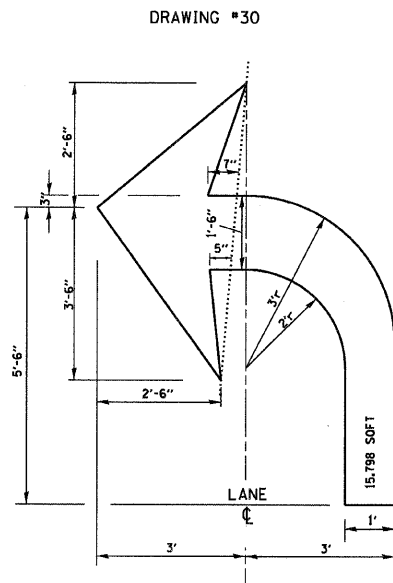
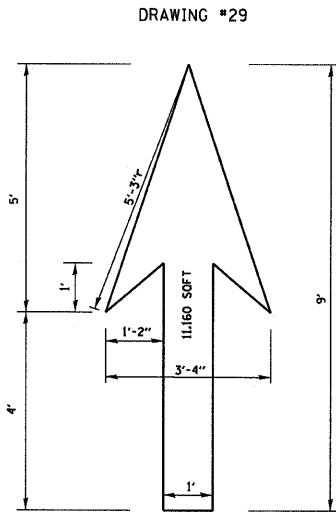


TYPICAL CROSSWALK MARKING



NOTE:
 1.) FOR BIKE LANE SYMBOLS ONLY, USE PRE-FORMED THERMOPLASTIC WITH A MINIMUM THICKNESS OF 90 MILS, MINIMUM SKID RESISTANCE VALUE OF 60 BPN, & A MINIMUM INDEX OF REFRACTION OF 1.50.
 2.) THE RESIDENT ENGINEER SHALL CONTACT MR. BEN GOMBERG AT 312-744-8093 AT LEAST ONE CALENDAR WEEK PRIOR TO INSTALLING BIKE LANE SYMBOLS.

TYPICAL BIKE LANE SYMBOLS
 DRAWING #28



NOTE:
 ALL MARKINGS SHALL BE SOLID WHITE UNLESS OTHERWISE NOTED IN THE PLANS

FILE NAME = W:\diststd\22x34\to24.dgn

USER NAME = goglianob
 DESIGNED -
 DRAWN -
 PLOT SCALE = 50.000 / IN.
 PLOT DATE = 1/4/2008

DESIGNED -
 DRAWN -
 CHECKED -
 DATE -

REVISED - T. RAMMACHER 12-07-00
 REVISED -
 REVISED -
 REVISED -

STATE OF ILLINOIS
 DEPARTMENT OF TRANSPORTATION

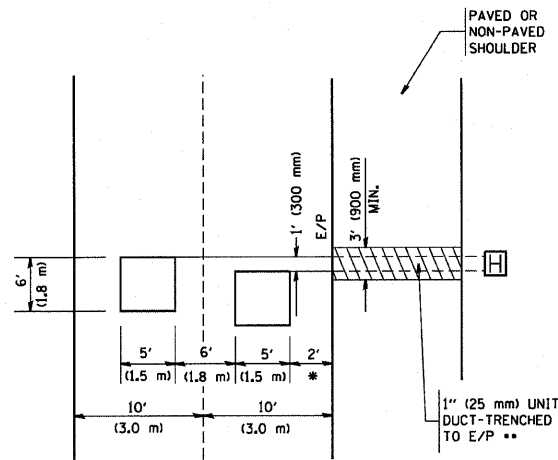
CITY OF CHICAGO
 TYPICAL PAVEMENT MARKINGS

SCALE: NONE SHEET NO. 2 OF 2 SHEETS STA. TO STA.

F.A.P. RTE. 307	SECTION 2010-140-RS	COUNTY COOK	TOTAL SHEETS 29	SHEET NO. 28
TC-24			CONTRACT NO. 60N19	
FED. ROAD DIST. NO. 1 ILLINOIS FED. AID PROJECT				

LOOPS NEXT TO SHOULDERS

PROVIDE A PAVEMENT REPLACEMENT
NOTE WHICH SHOULD EQUAL
3' (900 mm) X WIDTH OF
PAVED SHOULDER.

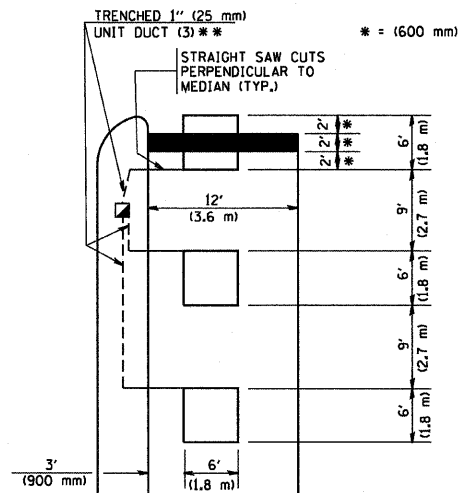


* = (600 mm)

** UNIT DUCT IS TO BE SHOWN ON PLAN SHEETS
BUT SHALL NOT BE INCLUDED IN THE PAY ITEMS.

**LEFT TURN LANES WITH MEDIANS
VOLUME DENSITY ("FAR OUT" DETECTION)
ON SAME APPROACH
(PROTECTED / PERMITTED LEFT TURN PHASING)**

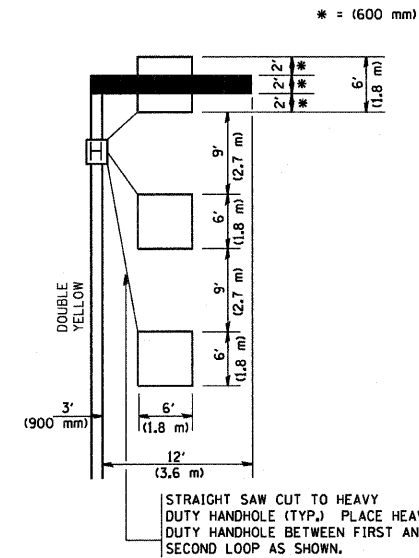
HANDHOLE LOCATION MAY
VARY DEPENDING ON GEOMETRICS
AND DESIGN OF TRAFFIC SIGNALS.
HEAVY-DUTY HANDHOLES TO BE
USED WHEN THE MEDIAN IS
MOUNTABLE. REFER TO STANDARD
814001 TO ENSURE THAT HANDHOLE
FITS IN MEDIAN.



** UNIT DUCT IS TO BE SHOWN ON PLAN SHEETS
BUT SHALL NOT BE INCLUDED IN THE PAY ITEMS.

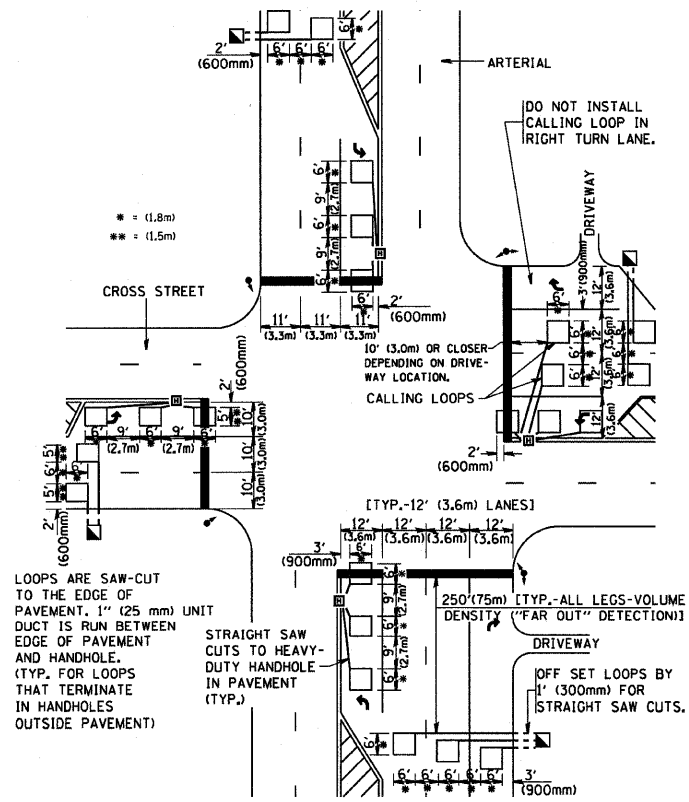
NOTE: DUAL LEFT TURNS NOT SHOWN REFER TO
PLAN SHEET FOR DETECTOR LOOP REPLACEMENT

**LEFT TURN LANES WITHOUT MEDIANS
VOLUME DENSITY ("FAR OUT" DETECTION)
ON SAME APPROACH
(PROTECTED / PERMITTED LEFT TURN PHASING)**



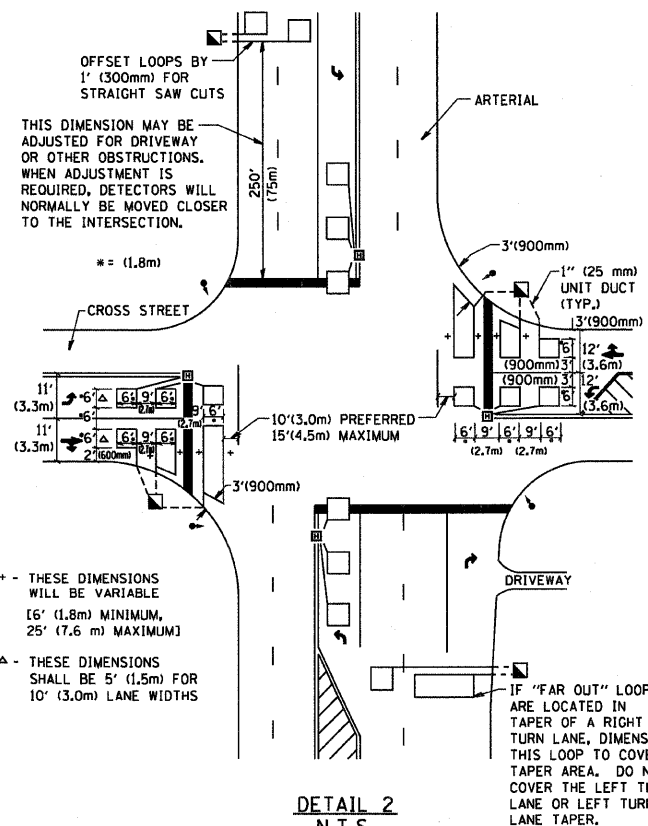
NOTE: DUAL LEFT TURNS NOT SHOWN REFER TO
PLAN SHEET FOR DETECTOR LOOP REPLACEMENT

**ARTERIAL-VOLUME DENSITY ("FAR OUT" DETECTION)
CROSS STREET-VOLUME DENSITY ("FAR OUT" DETECTION)**



DETAIL 1
N.T.S.

**ARTERIAL-VOLUME DENSITY ("FAR OUT" DETECTION)
CROSS STREET-NON VOLUME DENSITY ("UPTIGHT" PRESENCE DETECTION)**



DETAIL 2
N.T.S.

NOTES:

VEHICLES LOOP DETECTORS

- * ALL LEAD IN CABLE SHALL BE TWO CONDUCTOR NO. 14 TWISTED, SHIELDED.
- * EACH DETECTOR LOOP SHALL HAVE ITS OWN SAW CUT FROM THE LOOP TO THE EDGE OF PAVEMENT OR TO A HANDHOLE IN THE PAVEMENT.
- * EACH DETECTOR LOOP SHALL HAVE ITS OWN ONE INCH (25 mm) UNIT DUCT BETWEEN THE EDGE OF PAVEMENT AND THE FIRST HANDHOLE OR JUNCTION BOX. EACH UNIT DUCT RUN SHALL BE SHOWN ON THE PLANS BY THE DESIGNER, BUT SHALL NOT BE PAID FOR SEPARATELY. THIS ITEM IS INCIDENTAL TO THE PAY ITEM FOR DETECTOR LOOPS.
- * ONE DIMENSION OF ALL DETECTOR LOOPS SHALL BE SIX FEET (1.8 m)
- * EACH LANE OF NON-LOCKING, PRESENCE DETECTION AND EACH LANE OF A DOUBLE LEFT TURN LANE REQUIRES A SEPARATE INDUCTIVE LOOP DETECTOR AND LEAD IN CABLE.
- * WHEN NON-LOCKING, PRESENCE DETECTION IS USED, MORE THAN ONE LOOP PER LANE IS REQUIRED BEHIND THE STOP BAR (i.e. 1-1/2, 1-3/4, 2).
- * WHEN SYSTEM LOOPS ARE REQUIRED ON AN APPROACH OF AN INTERSECTION, THE LOOPS USED FOR VOLUME DENSITY AND INTERSECTION TIMING SHALL ALSO BE USED AS SYSTEM DETECTORS. EACH ONE OF THESE TYPE OF LOOPS REQUIRES A SEPARATE TWO CONDUCTOR NO. 14 TWISTED SHIELDED CABLE AND A SEPARATE INDUCTIVE LOOP DETECTOR WHEN NEW CONTROLLERS ARE UTILIZED. THE DESIGNER SHALL LABEL THESE TYPES OF LOOPS AS "INTERSECTION AND SAMPLING (SYSTEM) DETECTORS" ON THE SIGNAL LAYOUT, THE INTERCONNECT PLAN AND THE SYSTEM CABLE PLAN. WHEN AN EXISTING CONTROLLER IS UTILIZED FOR THIS TYPE OF DETECTION, THE PAY ITEM "INDUCTIVE LOOP DETECTOR WITH SYSTEM OUTPUT" SHOULD BE USED.

PLACEMENT OF DETECTORS

THE FOLLOWING FIGURES REPRESENT THE MOST COMMON DETECTOR LOOP LOCATIONS AND SIZES. ADJUSTMENTS WILL BE NECESSARY FOR SPECIFIC GEOMETRIC CONSIDERATIONS.

LOCATIONS AND DEMENSIONS OF DETECTOR LOOPS ARE REQUIRED ON ALL SIGNAL LAYOUT PLAN SHEETS.

"FAR OUT" DETECTION REFERS TO LOCKING, PRESENCE TYPE DETECTION LOCATED IN THRU LANES, RIGHT TURN LANES, AND RIGHT TURN LANE TAPER AREAS (IF APPLICABLE), USUALLY 250' (75 m) IN ADVANCE OF STOP BARS. "UPTIGHT" DETECTION REFERS TO NON-LOCKING PRESENCE TYPE DETECTION LOCATED IN ALL LANES AND 10'-15' (3.0 m-4.5 m) BEHIND THE CROSSING STREET'S EDGE OF PAVEMENT EXTENDED.

NOTE:

ALL DETAILS AND NOTES SHOWN ARE FROM THE I.D.O.T. DISTRICT 1 TRAFFIC SIGNAL DESIGN GUIDELINES DATED JANUARY 1995

THIS DRAWING HAS BEEN PREPARED TO ASSIST THE RESIDENT ENGINEER FOR ALL ROADWAY RESURFACING OR S.M.A.R.T. PROJECTS WHERE THE DIMENSIONS ARE NOT SHOWN ON THE PLANS AND THE FINAL LOCATIONS FOR CROSSWALKS OR STOP BARS ARE NOT DETERMINED.

FILE NAME =	USER NAME = geglennob
W:\diststd\2234\ts07.dgn	

DESIGNED -	REVISED -
DRAWN -	REVISED -
PLLOT SCALE = 50.0000 "/ IN.	CHECKED - R.K.F.
PLLOT DATE = 1/4/2008	DATE

**STATE OF ILLINOIS
DEPARTMENT OF TRANSPORTATION**

**DISTRICT 1 - DETECTOR LOOP INSTALLATION
DETAILS FOR ROADWAY RESURFACING**

SCALE: NONE SHEET NO. 1 OF 1 SHEETS STA. TO STA.

F.A.P. RTE. 307	SECTION 2010-140-RS	COUNTY COOK	TOTAL SHEETS 29	SHEET NO. 20
TS-07		CONTRACT NO. 60N19		
FED. ROAD DIST. NO. 1 ILLINOIS FED. AID PROJECT				