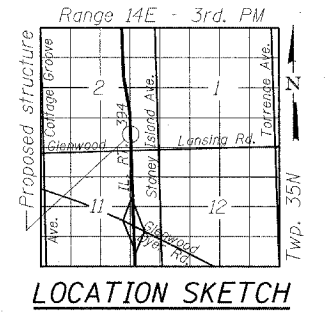
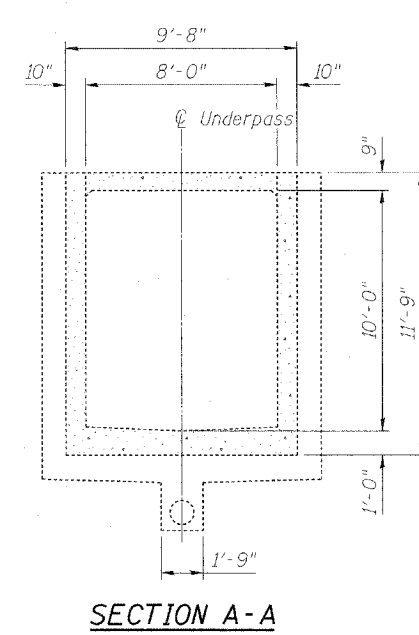
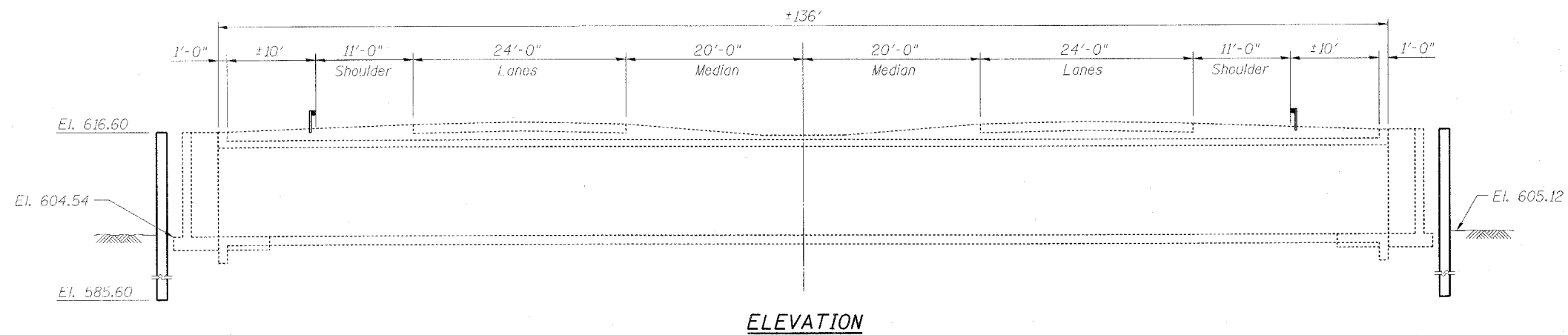


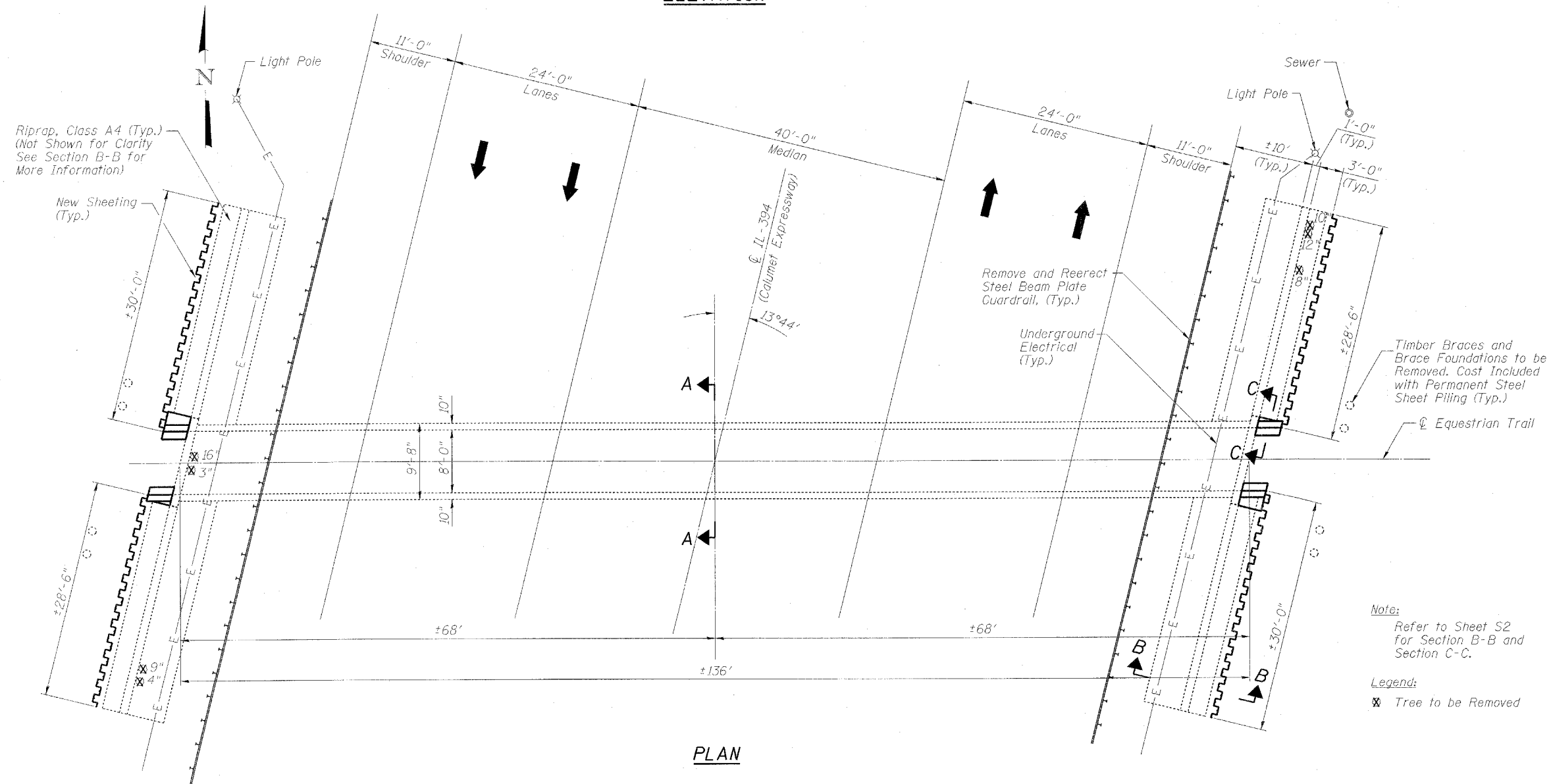
Existing Structure: S.N. 016-1211 was built in 1950 as Section No. 066-102.2.

No Salvage.



**SCOPE OF WORK**

1. Wingwall Repair.



**DESIGN SPECIFICATIONS**  
2002 AASHTO Standard Specifications  
for Highway Bridges (17th Edition)

**LOADING HS20-44**

**DESIGN STRESSES**

**FIELD UNITS**  
 $f'_c = 3,500$  psi  
 $f_y = 60,000$  psi (reinforcement)

*Note:*  
Refer to Sheet S2  
for Section B-B and  
Section C-C.

*Legend:*  
⊗ Tree to be Removed

**GENERAL PLAN AND ELEVATION**  
**IL. RT. 394 OVER EQUESTRIAN TRAIL**  
**F.A.P. RT. 332 - SEC. 0312-708W-I**  
**WILL COUNTY**  
**STRUCTURE NO. 016-1211**

FILE NAME =	USER NAME =	DESIGNED - AMS	REVISED -	<b>STATE OF ILLINOIS DEPARTMENT OF TRANSPORTATION</b>	<b>GENERAL PLAN AND ELEVATION STRUCTURE NO. 016-1211</b>	F.A.P. RTE.	SECTION	COUNTY	TOTAL SHEETS	SHEET NO.	
		CHECKED - AMS	REVISED -			332	0312-708W-I	COOK	17	5	
		DRAWN - DR	REVISED -			CONTRACT NO. 60N81					
		CHECKED - JMH	REVISED -			ILLINOIS FED. AID PROJECT					