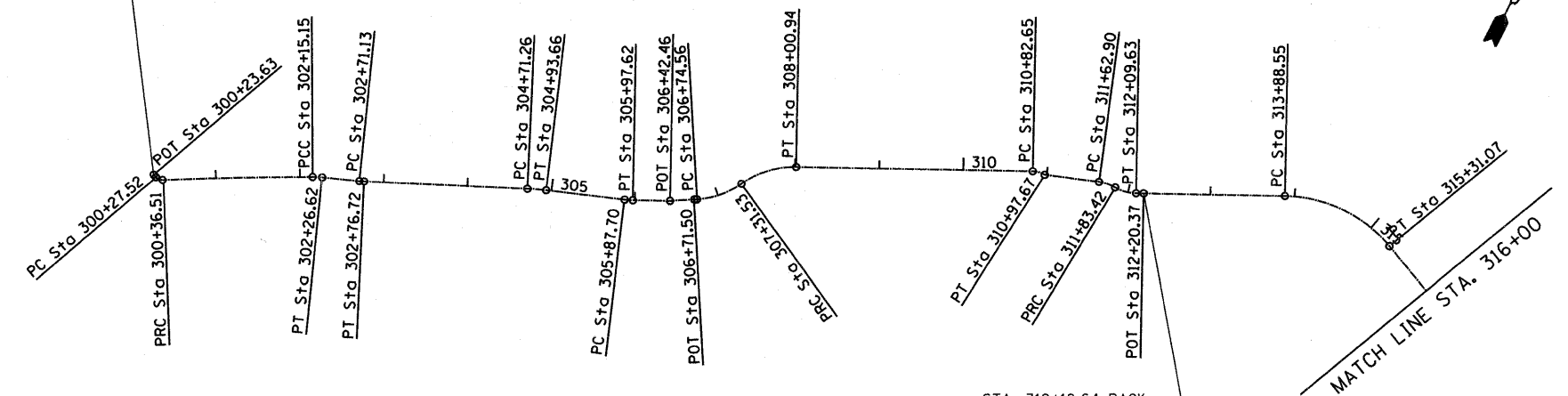
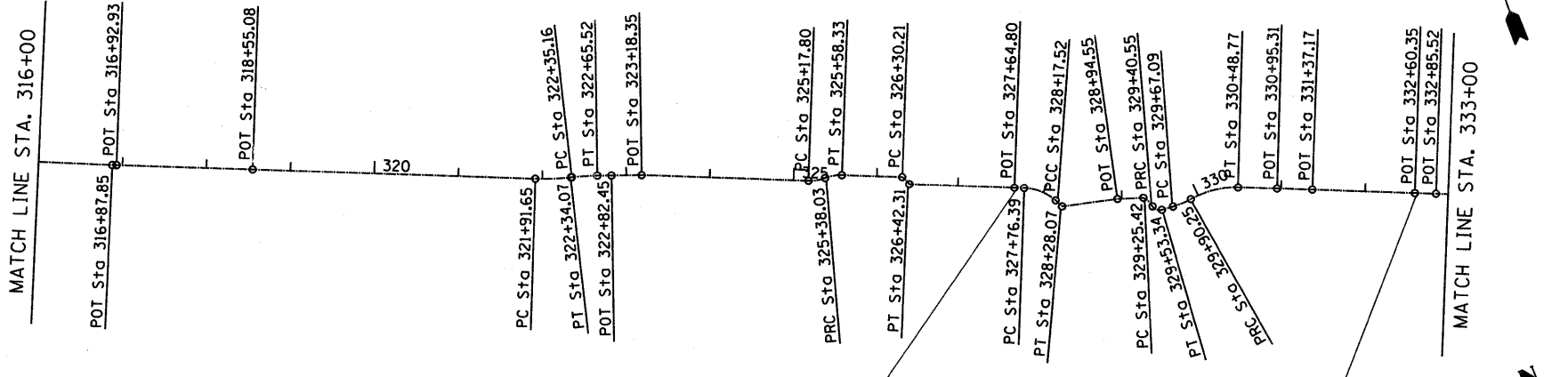


PROJECT BEGINS
STA. 300+23.63

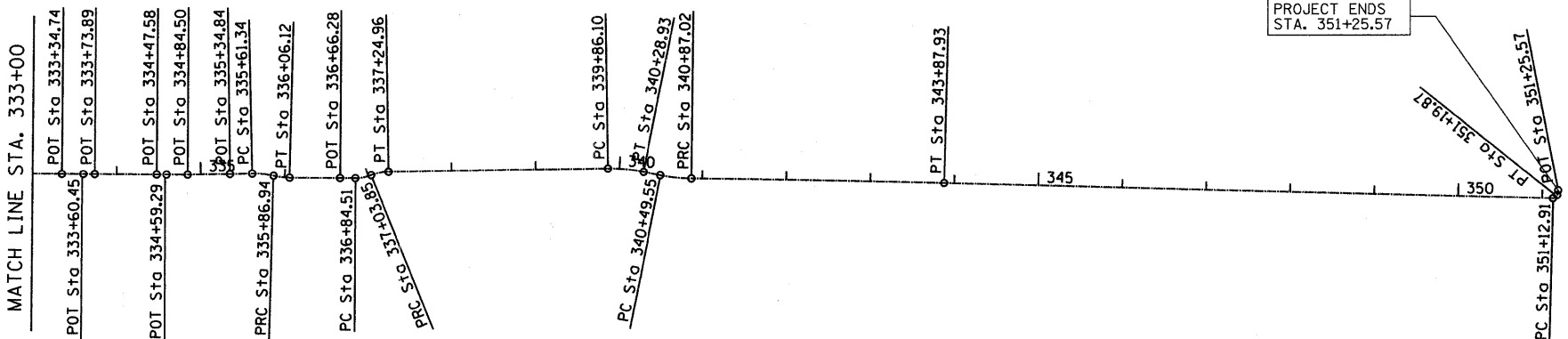


STA. 312+18.64 BACK
= STA. 312+20.37 AHEAD



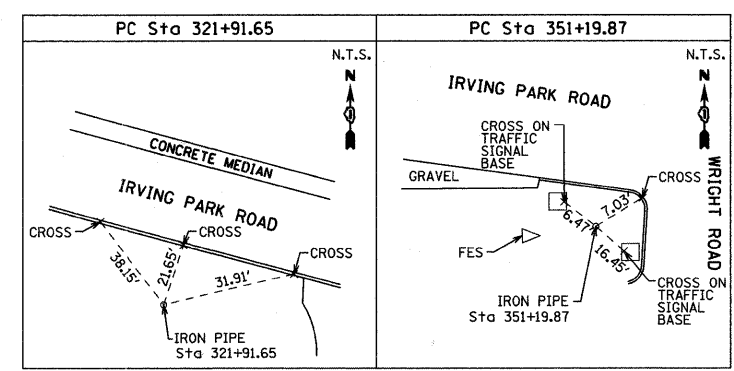
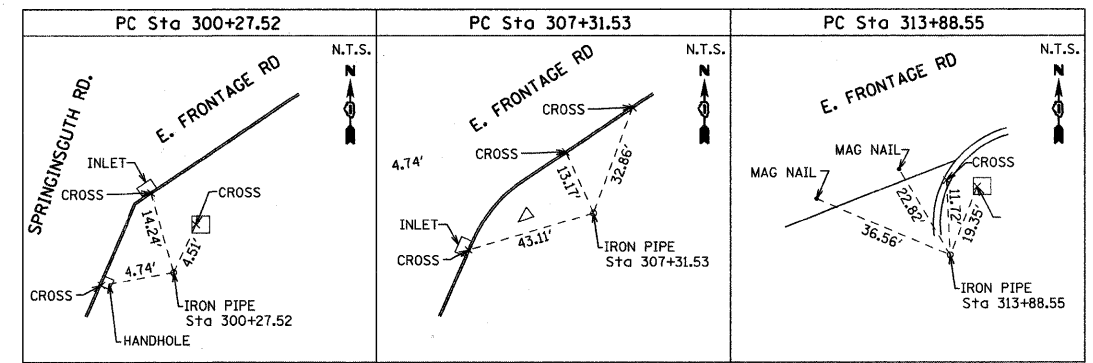
STA. 327+67.40 BACK
= STA. 327+64.80 AHEAD

STA. 322+59.36 BACK
= STA. 332+60.35 AHEAD



PROJECT ENDS
STA. 351+25.57

TIES



BENCHMARKS

REFERENCE BENCHMARKS:

1. STATION: SPRING RESET-VILLAGE OF SCHAUMBURG GPS SURVEY MONUMENT, LOCATED ON THE WEST SIDE OF SPRINGSGUTH OPPOSITE THE BASEBALL STADIUM. ELEVATION = 819.62 FT. (RECORD)
2. STATION: K-132-VILLAGE OF SCHAUMBURG GPS SURVEY MONUMENT, 3 1/2" BRASS CAP SET IN CONCRETE POST, MARKED K-132 RESET 1971, LOCATED AT THE SOUTHWEST CORNER OF IRVING PARK. ELEVATION = 796.43 FT. (RECORD)

SITE BENCHMARKS:

1. (CP21) CROSS CUT IN THE SOUTHWEST CORNER OF A CONCRETE WALK ON THE NORTH SIDE OF IRVING PARK (IL RTE. 19) AT THE NORTHEAST CORNER OF IRVING PARK ROAD AND THE ENTRANCE RAMP TO EAST ELGIN-O'HARE EXPRESSWAY. ELEVATION = 808.50 FT.
2. (CP22) CROSS CUT IN CONCRETE SIDEWALK AT THE SOUTHWEST CORNER OF RODENBURG ROAD AND IRVING PARK ROAD, 59' SOUTHWEST OF A LIGHT POLE, 21' SOUTHWEST OF A TRAFFIC SIGNAL AND 18" ELEVATION = 796.49 FT.
3. (CP26) CROSS CUT IN CONCRETE SIDEWALK AT THE NORTHWEST CORNER OF IRVING PARK ROAD AND ALBION AVENUE. ELEVATION = 805.94 FT.
4. (CP27) 5/8" IRON BAR WITH RED CAP ON THE SOUTH SIDE OF IRVING PARK ROAD, NEAR THE SCHAUMBURG PARK DISTRICT BUILDING. ELEVATION = 805.47 FT.
5. (CP28) 5/8" IRON BAR AT THE SOUTHWEST CORNER OF IRVING PARK ROAD AND WRIGHT BLVD., 6.5' SOUTHWEST OF A TRAFFIC SIGNAL VAULT AND 6' SOUTHWESTERLY OF THE EDGE OF PAVEMENT. ELEVATION = 801.62 FT.

FILE NAME = ...\\D163355-sht-ATB.dgn	USER NAME = gollwenger	DESIGNED - LP	REVISED -	STATE OF ILLINOIS DEPARTMENT OF TRANSPORTATION	IRVING PARK ROAD BIKE PATH ALIGNMENT, TIES AND BENCHMARKS		F.A. RTE.	SECTION	COUNTY	TOTAL SHEETS	SHEET NO.	
	PLOT SCALE = 100.0000' / IN.	DRAWN - LP	REVISED -		SCALE: 1"=100'	SHEET NO. 9 OF 70 SHEETS	STA.	TO STA.	07-00091-00-BT	COOK	70	9
	PLOT DATE = 10/26/2010	CHECKED - JP	REVISED -						CONTRACT NO. 63355			
		DATE - 10/26/2010	REVISED -						FED. ROAD DIST. NO. 1 ILLINOIS FED. AID PROJECT			