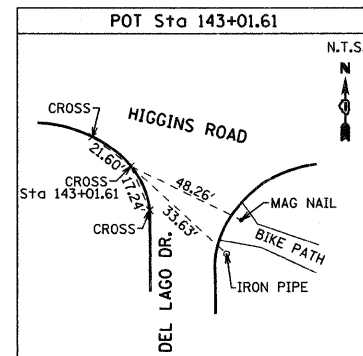
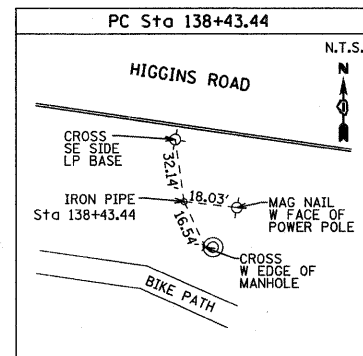
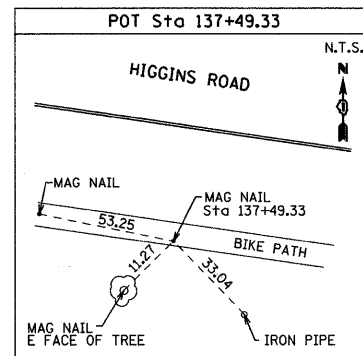


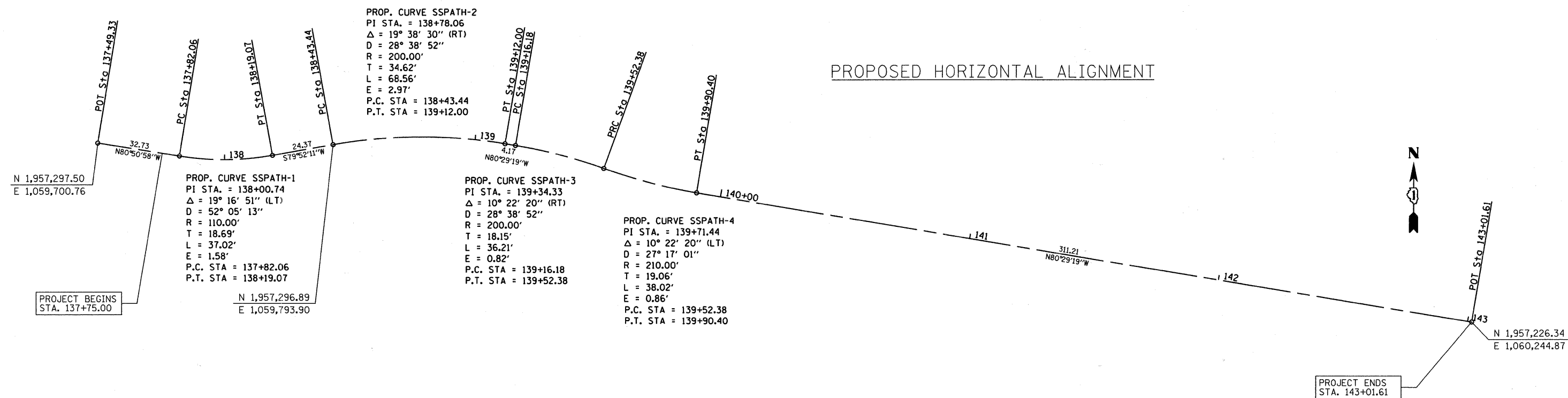
# TIES



# BENCHMARKS

1. VILLAGE OF SCHAUMBURG GPS SURVEY MANUMENT, 2" ALUMINUM CAP SET IN CONCRETE, MARKED 1147, LOCATED AT THE WEST SIDE OF NATIONAL PARKWAY AND NORTH OF JASON LANE.  
ELEVATION = 737.92 FT.

# PROPOSED HORIZONTAL ALIGNMENT



FILE NAME = ...\\D163355-shr-ATB_H.dgn	USER NAME = gellwanger	DESIGNED - LP	REVISED -	<b>STATE OF ILLINOIS DEPARTMENT OF TRANSPORTATION</b>	<b>HIGGINS ROAD BIKE PATH ALIGNMENT, TIES AND BENCHMARKS</b>			F.A. RTE.	SECTION	COUNTY	TOTAL SHEETS	SHEET NO.
	PLOT SCALE = 20.00' / IN.	DRAWN - LP	REVISED -		07-00091-00-BT	COOK	70	11				
	PLOT DATE = 10/26/2010	CHECKED - JP	REVISED -		CONTRACT NO. 63355							
	DATE = 10/26/2010	DATE = 10/26/2010	REVISED -		FED. ROAD DIST. NO. 1 ILLINOIS FED. AID PROJECT							
					SCALE: 1" = 20'	SHEET NO. 11 OF 70 SHEETS	STA.	TO STA.				