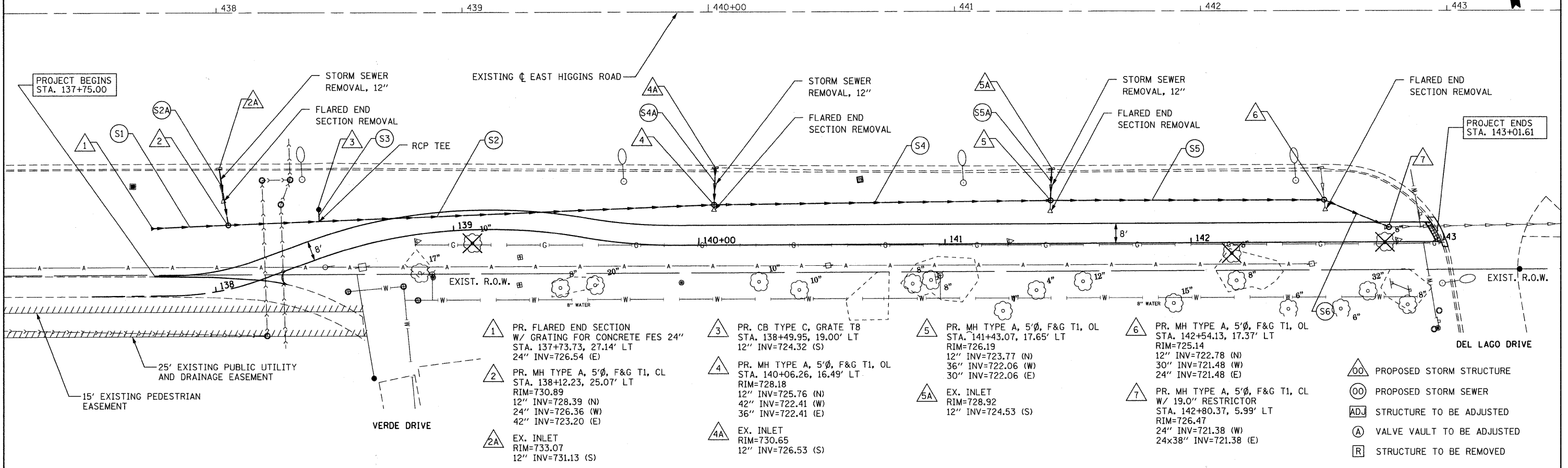


- (S1) 25 LF - 24"Ø RCP @ 0.72% T.B.F. = 0.0 CU. YD.
- (S2) 195 LF - 42"Ø RCP @ 0.41% T.B.F. = 56.2 CU. YD.
- (S2A) 22 LF - 12"Ø RCP @ 12.45% T.B.F. = 0.0 CU. YD.
- (S3) 3 LF - 12"Ø RCP @ 0.50% T.B.F. = 0.0 CU. YD.
- (S4) 135 LF - 36"Ø RCP @ 0.26% T.B.F. = 0.0 CU. YD.
- (S4A) 14 LF - 12"Ø RCP @ 5.50% T.B.F. = 0.0 CU. YD.
- (S5) 110 LF - 30"Ø RCP @ 0.53% T.B.F. = 0.0 CU. YD.
- (S5A) 12 LF - 12"Ø RCP @ 6.33% T.B.F. = 0.0 CU. YD.
- (S6) 27 LF - 24"Ø RCP @ 0.37% T.B.F. = 2.2 CU. YD.

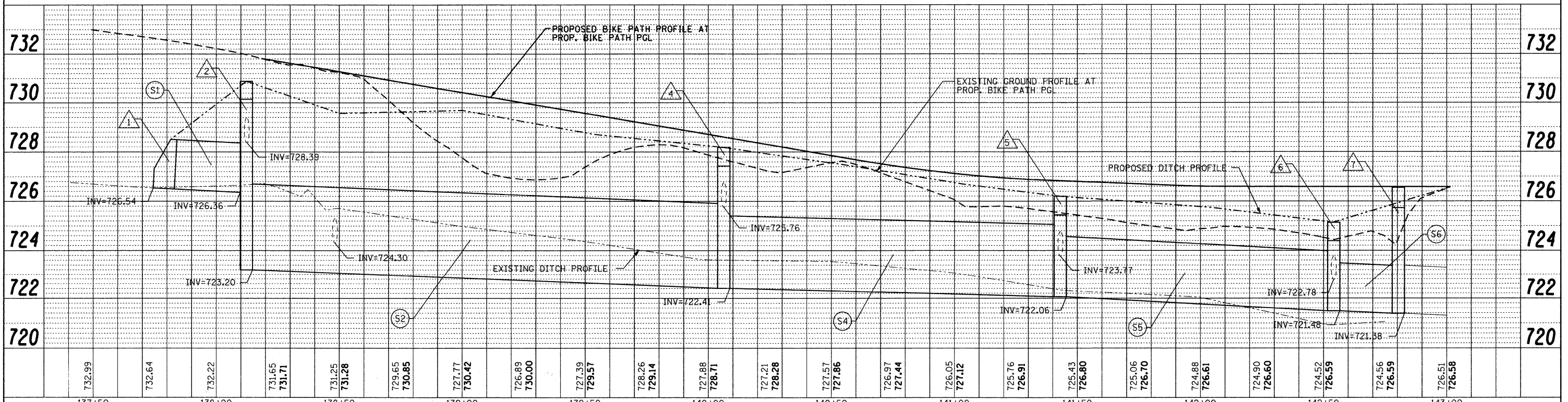
DATE	
BY	
REVISIONS	
PLANNED	
ALIGNED	
CHECKED	
PLANNED	
NO. 1	

DATE	
BY	
REVISIONS	
PLANNED	
GRADES CHECKED	
SCALE	
PLANNED	
NO. 1	



- 1 PR. FLARED END SECTION W/ GRATING FOR CONCRETE FES 24" STA. 137+73.73, 27.14' LT 24" INV=726.54 (E)
- 2 PR. MH TYPE A, 5'Ø, F&G T1, CL STA. 138+12.23, 25.07' LT RIM=730.89 12" INV=728.39 (N) 24" INV=726.36 (W) 42" INV=723.20 (E)
- 2A EX. INLET RIM=733.07 12" INV=731.13 (S)
- 3 PR. CB TYPE C, GRATE T8 STA. 138+49.95, 19.00' LT 12" INV=724.32 (S)
- 4 PR. MH TYPE A, 5'Ø, F&G T1, OL STA. 140+06.26, 16.49' LT RIM=728.18 12" INV=725.76 (N) 42" INV=722.41 (W) 36" INV=722.41 (E)
- 4A EX. INLET RIM=730.65 12" INV=726.53 (S)
- 5 PR. MH TYPE A, 5'Ø, F&G T1, OL STA. 141+43.07, 17.65' LT RIM=726.19 12" INV=723.77 (N) 36" INV=722.06 (W) 30" INV=722.06 (E)
- 5A EX. INLET RIM=728.92 12" INV=724.53 (S)
- 6 PR. MH TYPE A, 5'Ø, F&G T1, OL STA. 142+54.13, 17.37' LT RIM=725.14 12" INV=722.78 (N) 30" INV=721.48 (W) 24" INV=721.48 (E)
- 7 PR. MH TYPE A, 5'Ø, F&G T1, CL W/ 19.0" RESTRICTOR STA. 142+80.37, 5.99' LT RIM=726.47 24" INV=721.38 (W) 24x38" INV=721.38 (E)

- △ PROPOSED STORM STRUCTURE
- PROPOSED STORM SEWER
- ADJ STRUCTURE TO BE ADJUSTED
- Ⓐ VALVE VAULT TO BE ADJUSTED
- Ⓡ STRUCTURE TO BE REMOVED



FILE NAME = ...ND163365-ah-drain_H.dgn	USER NAME = gellwenger	DESIGNED - LP	REVISED -	STATE OF ILLINOIS DEPARTMENT OF TRANSPORTATION	HORIZ. 1"=20' SCALE: VERT. 1"=2' SHEET NO. 31 OF 70 SHEETS	HIGGINS ROAD BIKE PATH DRAINAGE AND UTILITIES	F.A. RTE.	SECTION	COUNTY	TOTAL SHEETS	SHEET NO.
PLOT SCALE = 20.0000' / IN.	CHECKED - JP	REVISED -	07-00091-00-BT				COOK	70	31		
PLOT DATE = 10/26/2010	DATE - 10/26/2010	REVISED -	CONTRACT NO. 63355								
							FED. ROAD DIST. NO. 1 ILLINOIS FED. AID PROJECT				