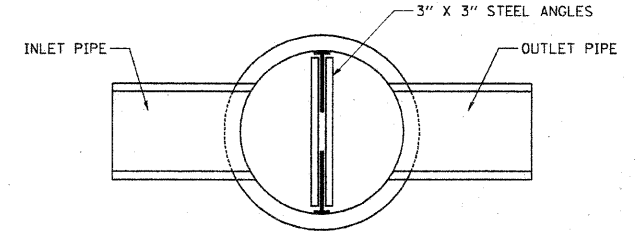
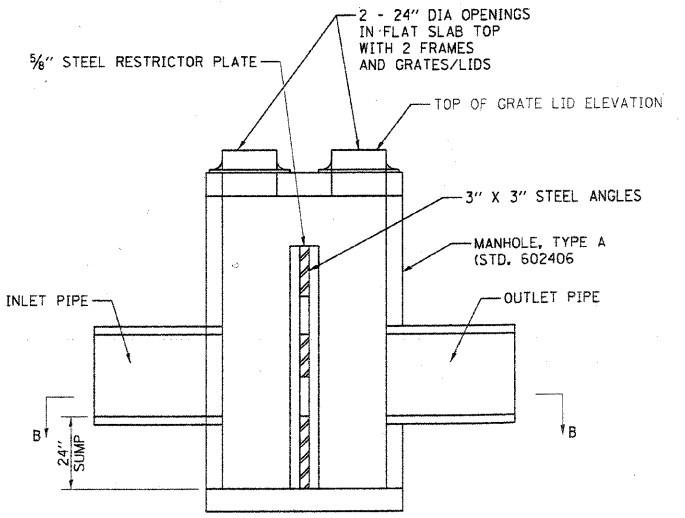


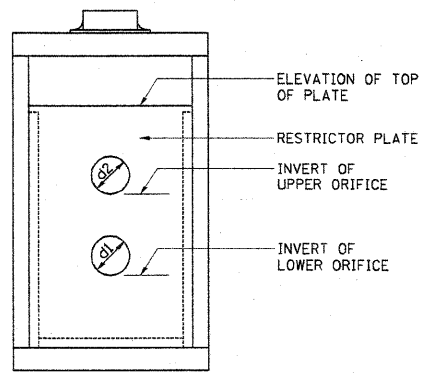
PLAN



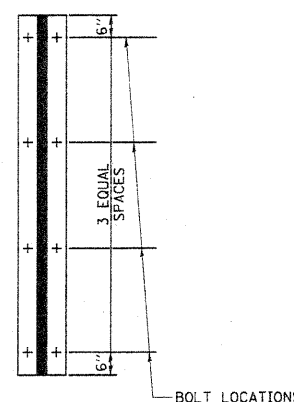
SECTION B-B



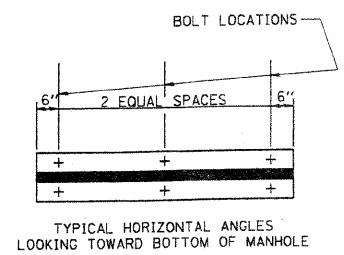
SECTION A-A



SECTION C-C



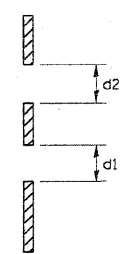
TYPICAL VERTICAL ANGLES
LOOKING TOWARD MANHOLE WALL



TYPICAL HORIZONTAL ANGLES
LOOKING TOWARD BOTTOM OF MANHOLE

STEEL ANGLE BOLTING DETAILS

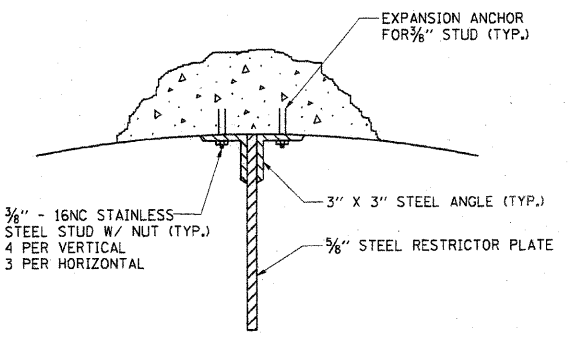
- TOTAL BOLTS REQUIRED: 22
- NOTE:
1. ANGLES SHOULD BE 3" X 3" X 3/8"
 2. VERTICAL ANGLES SHOULD EXTEND FROM THE BOTTOM OF THE RESTRICTOR PLATE TO THE TOP.
 3. HORIZONTAL ANGLES SHOULD EXTEND FROM VERTICAL ANGLE TO VERTICAL ANGLE.



ORIFICE DETAIL

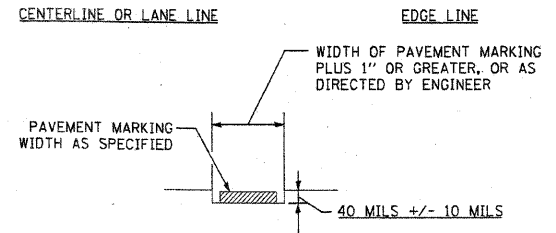
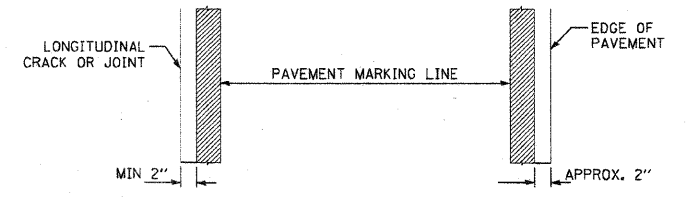
TOTAL BOLTS REQUIRED: 22

BASIN LOCATION	MANHOLE DIAMETER	FRAME AND GRATE	LOWER ORIFICE DIA. d1 (INCHES)	UPPER ORIFICE DIA. d2 (INCHES)	INVERT OF LOWER ORIFICE	INVERT OF UPPER ORIFICE	ELEVATION OF TOP OF PLATE OVERFLOW
COUNTRYSIDE	5'	TY 1 - OL	3.0	3.5	656.50	658.00	661.50
JERICHO	5'	TY 1 - OL	4.9	10.2	659.50	662.35	664.00



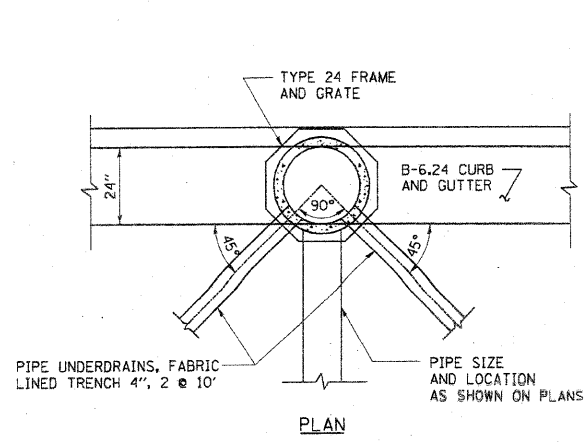
ANGLE FASTENER DETAIL

- NOTE:
1. ALL STEEL ANGLES AND PLATES TO BE GALVANIZED AFTER FABRICATION.
 2. ALL RESTRICTOR PLATES, ANGLES AND HARDWARE TO BE INCLUDED IN THE COST OF THE MANHOLE.
 3. BASIS OF PAYMENT: "MANHOLES, TYPE A, 6 FT. DIAMETER, TYPE 1 FRAME, CLOSED LID, RESTRICTOR PLATE" EACH

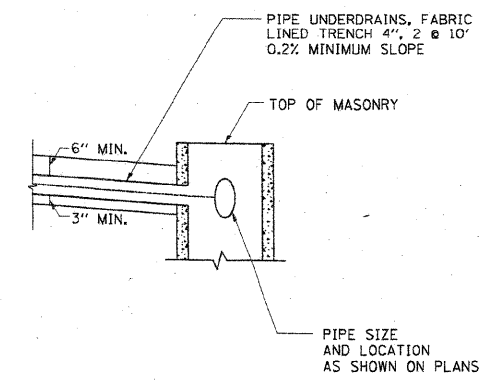


STIPING GROOVE INSTALLATION

- GENERAL NOTES:
1. UNLESS OTHERWISE ALLOWED BY THE ENGINEER, WAIT 10 DAYS OR LONGER TO GRIND A GROOVE INTO NEW ASPHALT PAVEMENT TO AVOID DAMAGE TO THE NEW PAVEMENT BY THE GROOVING AND CLEANING OPERATION.
 2. PAVEMENT MARKINGS SHALL CONFORM WITH IDOT HIGHWAY STANDARD 780001-01 (OR LATEST) UNLESS OTHERWISE DIRECTED BY THE ENGINEER OR DETAILS ON THE SHEET.



PLAN



ELEVATION

UNDERDRAIN DETAIL