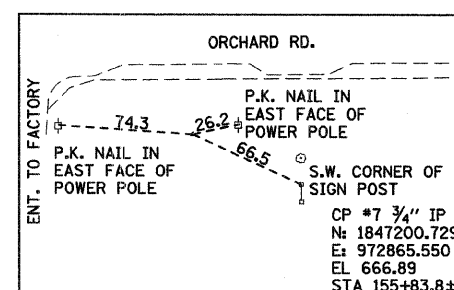
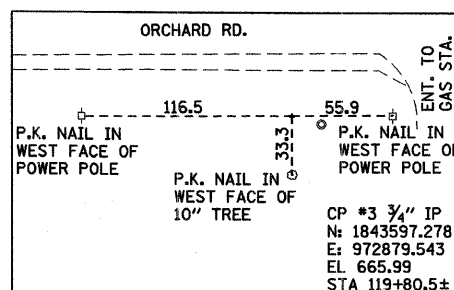
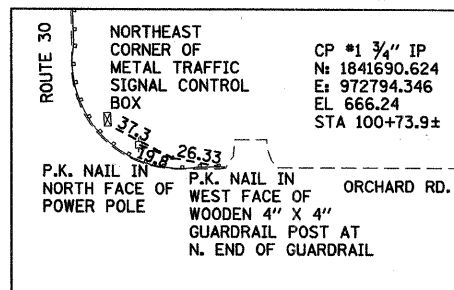
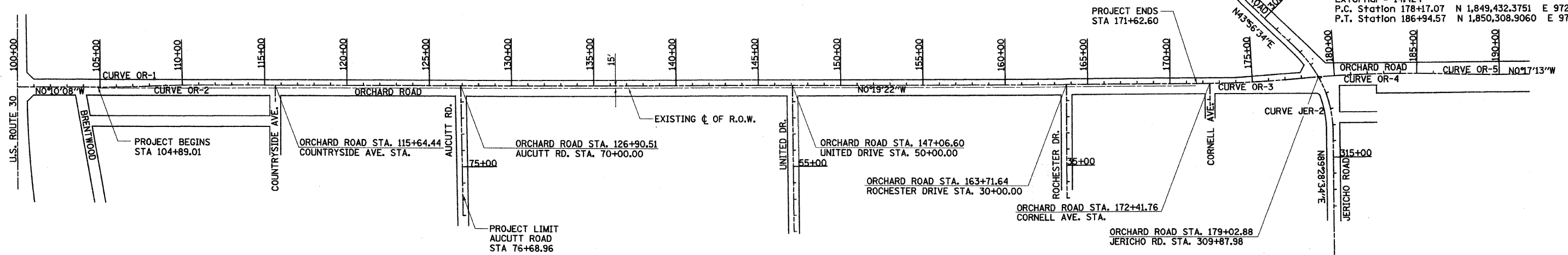


Curve OR-1
 P.I. Station 106+47.38 N 1,842,264.2471 E 972,834.5086
 Delta = 2° 42' 51" (LT)
 Degree = 0° 51' 25"
 Tangent = 158.374
 Length = 316.690
 Radius = 6,685.000
 External = 1.876
 P.C. Station 104+89.01 N 1,842,105.8735 E 972,834.9757
 P.T. Station 108+05.70 N 1,842,422.4210 E 972,826.5423

Curve OR-2
 P.I. Station 109+64.07 N 1,842,580.5949 E 972,818.5759
 Delta = 2° 42' 51" (RT)
 Degree = 0° 51' 25"
 Tangent = 158.374
 Length = 316.690
 Radius = 6,685.000
 External = 1.876
 P.C. Station 108+05.70 N 1,842,422.4210 E 972,826.5423
 P.T. Station 111+22.39 N 1,842,738.9685 E 972,818.1089

Curve OR-3
 P.I. Station 174+55.40 N 1,849,071.8954 E 972,786.5538
 Delta = 5° 00' 56" (LT)
 Degree = 0° 51' 25"
 Tangent = 292.775
 Length = 585.175
 Radius = 6,685.000
 External = 6.408
 P.C. Station 171+62.62 N 1,848,779.1256 E 972,788.2031
 P.T. Station 177+47.80 N 1,849,363.4001 E 972,759.3158

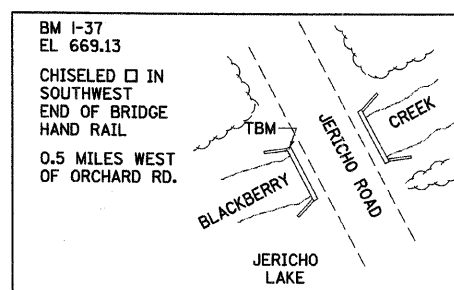
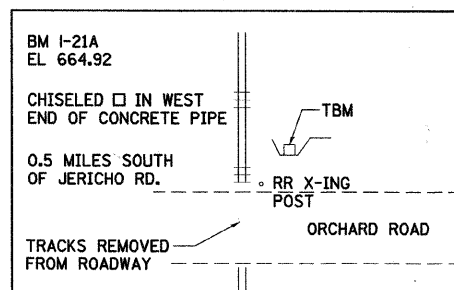
Curve OR-4
 P.I. Station 182+56.45 N 1,849,869.8471 E 972,711.9937
 Delta = 7° 31' 15" (RT)
 Degree = 0° 51' 25"
 Tangent = 439.378
 Length = 877.493
 Radius = 6,685.000
 External = 14.424
 P.C. Station 178+17.07 N 1,849,432.3751 E 972,752.8708
 P.T. Station 186+94.57 N 1,850,308.9060 E 972,728.7273



Curve OR-5
 P.I. Station 188+38.69 N 1,850,452.8927 E 972,734.2164
 Delta = 2° 28' 13" (LT)
 Degree = 0° 51' 25"
 Tangent = 144.126
 Length = 288.2076
 Radius = 6,685.000
 External = 1.553
 P.C. Station 186+94.57 N 1,850,308.9060 E 972,728.7273
 P.T. Station 189+82.77 N 1,850,597.0518 E 972,733.4931

Curve JER-1
 P.I. Station 301+02.33 N 1,848,904.2496 E 972,109.8972
 Delta = 8° 10' 14" (LT)
 Degree = 3° 59' 57"
 Tangent = 102.327
 Length = 204.307
 Radius = 1,432.691
 External = 3.650
 P.C. Station 300+00.00 N 1,848,841.4104 E 972,029.1382
 P.T. Station 302+04.31 N 1,848,977.9285 E 972,180.9056

Curve JER-2
 P.I. Station 310+73.93 N 1,849,604.0885 E 972,784.3709
 Delta = 45° 32' 00" (RT)
 Degree = 7° 59' 54"
 Tangent = 300.632
 Length = 569.281
 Radius = 716.340
 External = 60.527
 P.C. Station 307+73.30 N 1,849,387.6232 E 972,575.7512
 P.T. Station 313+42.58 N 1,849,606.8378 E 973,084.9901



NOTES:

1. BEARINGS ARE BASED ON THE NAD83 ILLINOIS EAST STATE PLANE COORDINATE SYSTEM.
2. ELEVATIONS ARE BASED ON THE NAVD88 DATUM.

205,9994 / IN.
 12/17/2018
 K:\117762\CAD\Sheets\N77762-Alignment.dgn



200 West Front Street
 Wheaton, IL 60187

DESIGNED - MK	REVISED -
DRAWN - DW	REVISED -
CHECKED - MH	REVISED -
DATE - 12/20/2010	REVISED -

KANE COUNTY
 DIVISION OF TRANSPORTATION
 ORCHARD ROAD RECONSTRUCTION

ALIGNMENT, TIES, AND BENCHMARKS

SCALE: N/A SHEET NO. 1 OF 1 SHEETS STA. TO STA.

F.A.P. RTE.	SECTION	COUNTY	TOTAL SHEETS	SHEET NO.
336	99-00232-01-WR	KANE	215	20
CONTRACT NO. 63541			ILLINOIS FED. AID PROJECT	