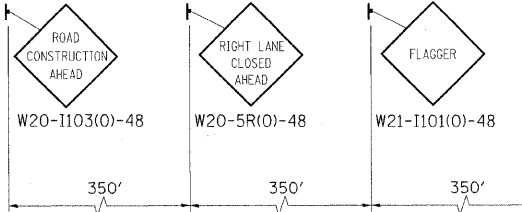
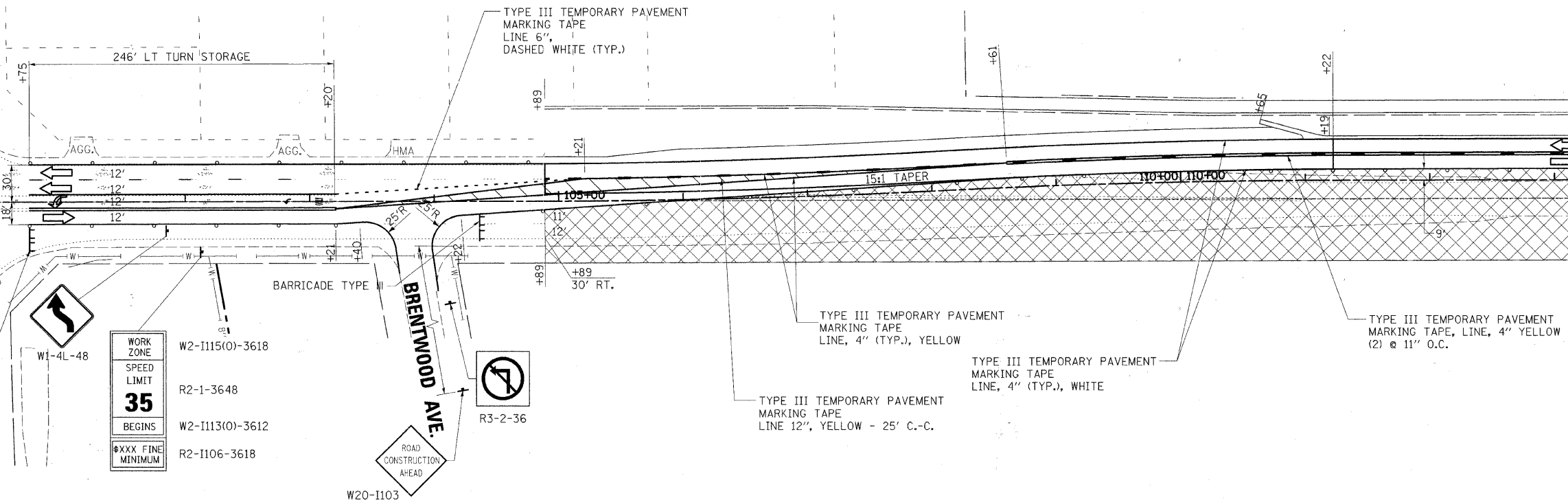


END WORK ZONE SPEED LIMIT  
G20-1103(O)-3660



TYPE III TEMPORARY PAVEMENT MARKING TAPE LINE, 4" (TYP.), WHITE  
 TYPE III TEMPORARY PAVEMENT MARKING TAPE, LINE 6", DASHED WHITE (TYP.)  
 ENTRANCE CLOSED UNTIL STAGE IV  
 TYPE III TEMPORARY PAVEMENT MARKING TAPE, LINE 6", WHITE (TYP.)  
 202' TAPER  
 250' STORAGE



- LEGEND**
- WORK AREA
  - SIGN
  - TYPE II BARRICADE WITH STEADY BURN MONODIRECTIONAL LIGHT, OR DRUM WITH STEADY BURN MONODIRECTIONAL LIGHT, OR DIRECTION INDICATOR BARRICADE WITH STEADY BURN MONODIRECTIONAL LIGHT @ 50' C-C
  - ARROW BOARD

\* SEE STATE STANDARD 701606-07  
 \*\* SEE DISTRICT 1 STANDARD TC14 TRAFFIC CONTROL AND PROTECTION AT TURN BAYS (TO REMAIN OPEN TO TRAFFIC)

NOTE: ALL CONFLICTING PAVEMENT MARKING AND RAISED REFLECTIVE PAVEMENT MARKERS SHALL BE REMOVED.

DESIGNED - MK	REVISED -
DRAWN - DW	REVISED -
CHECKED - MH	REVISED -
DATE - 12/20/2010	REVISED -

F.A.P. RTE.	SECTION	COUNTY	TOTAL SHEETS	SHEET NO.
336	99-00232-01-WR	KANE	215	32
CONTRACT NO. 63541			ILLINOIS FED. AID PROJECT	