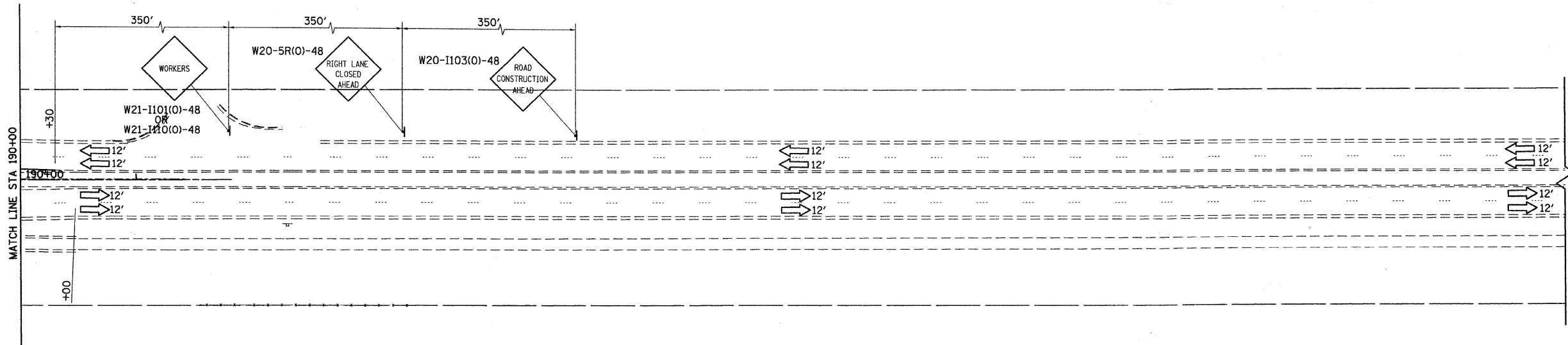


- LEGEND**
- WORK AREA
 - SIGN
 - TYPE II BARRICADE WITH STEADY BURN MONODIRECTIONAL LIGHT, OR DRUM WITH STEADY BURN MONODIRECTIONAL LIGHT, OR DIRECTION INDICATOR BARRICADE WITH STEADY BURN MONODIRECTIONAL LIGHT
 - 50' C-C
 - ARROW BOARD
 - * SEE STATE STANDARD 701606-07
 - ** SEE DISTRICT 1 STANDARD TC14 TRAFFIC CONTROL AND PROTECTION AT TURN BAYS (TO REMAIN OPEN TO TRAFFIC)



NOTE: ALL CONFLICTING PAVEMENT MARKING AND RAISED REFLECTIVE PAVEMENT MARKERS SHALL BE REMOVED.

48.9989 / IN. 12/17/2010 K:\1117762\CAD\Sheets\177762_Stage4_Sht4.dgn



200 West Front Street
Wheaton, IL 60187

DESIGNED - MK	REVISED -
DRAWN - DW	REVISED -
CHECKED - MH	REVISED -
DATE - 12/20/2010	REVISED -

**KANE COUNTY
DIVISION OF TRANSPORTATION
ORCHARD ROAD RECONSTRUCTION**

**MAINTENANCE OF TRAFFIC
STAGE IV**

SCALE: 1" = 50' SHEET NO. 26 OF 26 SHEETS STA. 175+00.00 TO STA. 192+00.00

F.A.P. RTE.	SECTION	COUNTY	TOTAL SHEETS	SHEET NO.
340	99-00232-01-WR	KANE	215	45
CONTRACT NO. 63541			ILLINOIS FED. AID PROJECT	