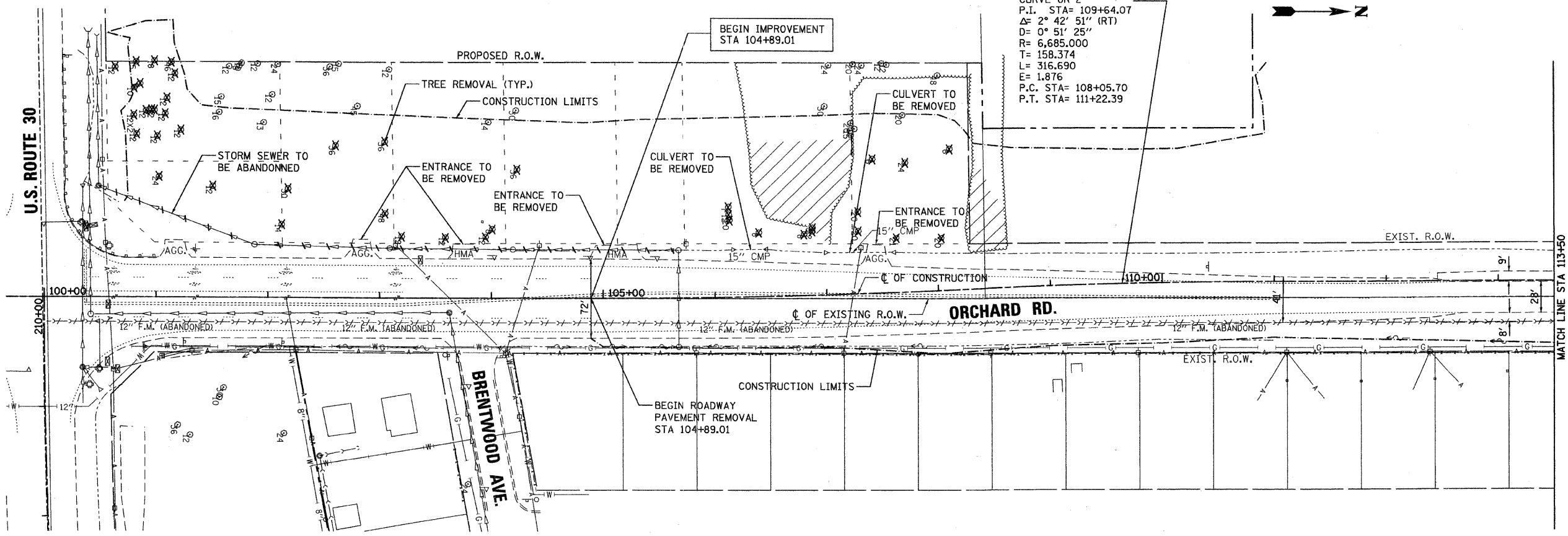
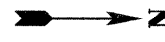


**LEGEND**

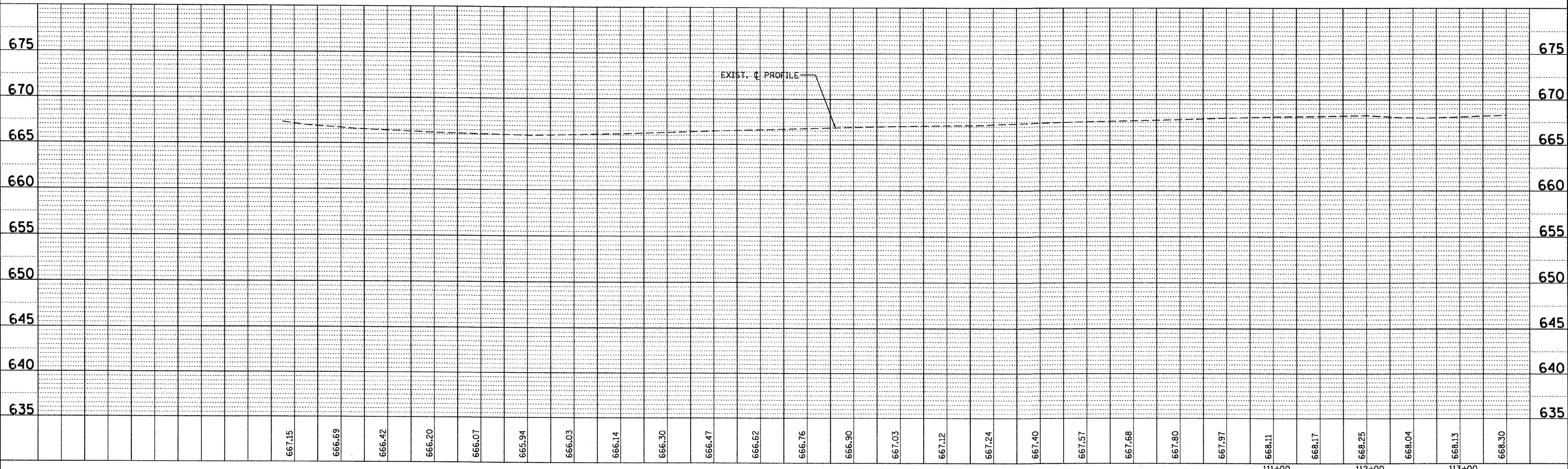
- ✕ TREE REMOVAL
- /// STORM SEWER TO BE ABANDONED

CURVE OR-2  
 P.I. STA= 109+64.07  
 Δ= 2° 42' 51" (RT)  
 D= 0° 51' 25"  
 R= 6,685.000  
 T= 158.374  
 L= 316.690  
 E= 1.876  
 P.C. STA= 108+05.70  
 P.T. STA= 111+22.39



PLAN	DESIGNED	DATE
	BY	
	CHECKED	
	DATE	
	NO.	

PROFILE	DESIGNED	DATE
	BY	
	CHECKED	
	DATE	
	NO.	



**rjngroup**  
 Excellence through Ownership  
 200 West Front Street  
 Wheaton, IL 60187

DESIGNED - MK	REVISED -
DRAWN - DW	REVISED -
CHECKED - MH	REVISED -
DATE - 12/20/2010	REVISED -

**KANE COUNTY  
 DIVISION OF TRANSPORTATION  
 ORCHARD ROAD RECONSTRUCTION**

**EXISTING CONDITIONS - PROPOSED REMOVALS  
 STA. 104+00 TO STA. 113+50**

SCALE: 1" = 50'  
 SHEET NO. 1 OF 7 SHEETS  
 STA. 100+00.00 TO STA. 113+50.00

F.A.P. RTE.	SECTION	COUNTY	TOTAL SHEETS	SHEET NO.
336	99-00232-01-WR	KANE	215	46
CONTRACT NO. 63541			ILLINOIS FED. AID PROJECT	