

NOTE:
1. SEE GENERAL NOTES REGARDING SOIL BORING INFORMATION.

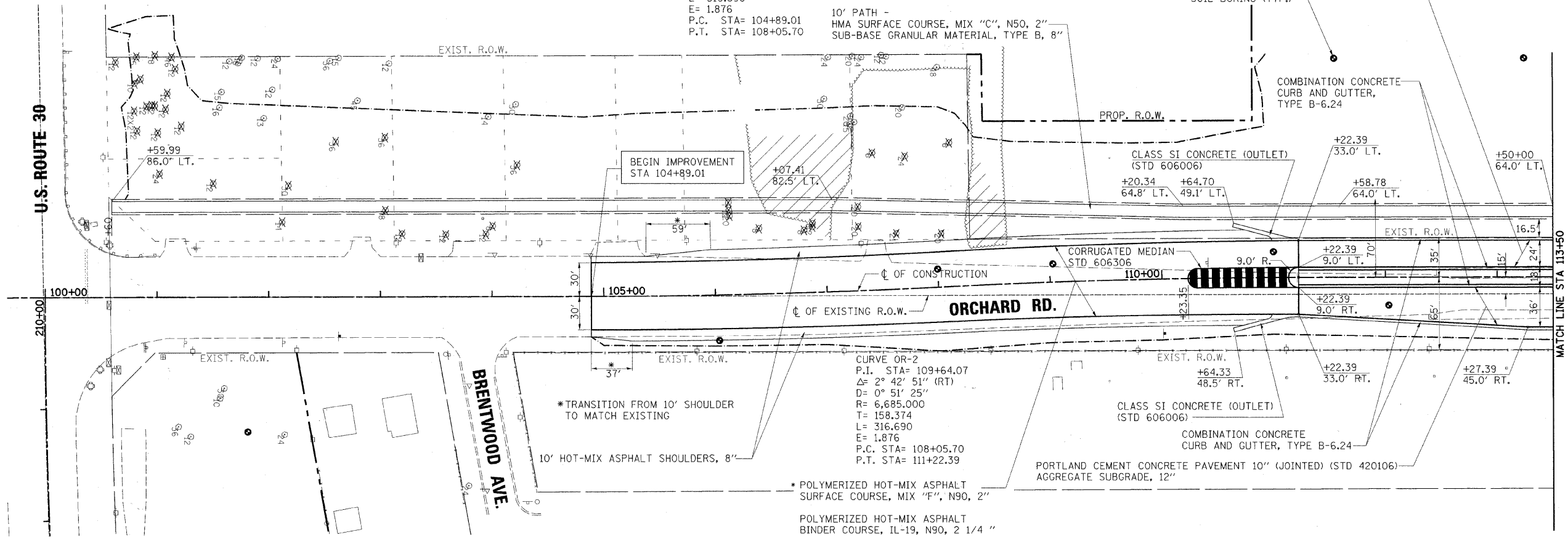
CURVE OR-1
P.I. STA= 106+47.38
 $\Delta = 2^\circ 42' 51''$ (LT)
D= 0° 51' 25"
R=6,685,000
T= 158.374
L= 316.690
E= 1.876
P.C. STA= 104+89.01
P.T. STA= 108+05.70

PORTLAND CEMENT CONCRETE PAVEMENT 10" (JOINTED) (STD 420106)
AGGREGATE SUBGRADE, 12"

10' PATH -
HMA SURFACE COURSE, MIX "C", N50, 2"
SUB-BASE GRANULAR MATERIAL, TYPE B, 8"

SOIL BORING (TYP.)

COMBINATION CONCRETE CURB AND GUTTER, TYPE B-6.24



BEGIN IMPROVEMENT STA 104+89.01

ORCHARD RD.

BRENTWOOD AVE.

CURVE OR-2
P.I. STA= 109+64.07
 $\Delta = 2^\circ 42' 51''$ (RT)
D= 0° 51' 25"
R= 6,685,000
T= 158.374
L= 316.690
E= 1.876
P.C. STA= 108+05.70
P.T. STA= 111+22.39

CLASS SI CONCRETE (OUTLET) (STD 606006)

COMBINATION CONCRETE CURB AND GUTTER, TYPE B-6.24

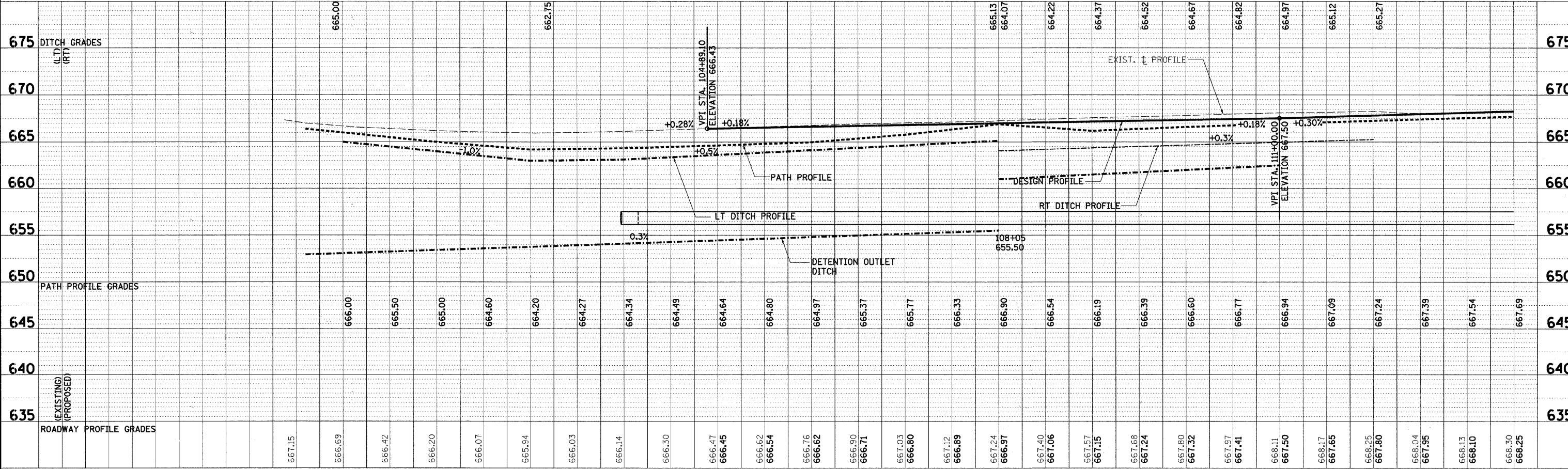
PORTLAND CEMENT CONCRETE PAVEMENT 10" (JOINTED) (STD 420106)
AGGREGATE SUBGRADE, 12"

* POLYMERIZED HOT-MIX ASPHALT SURFACE COURSE, MIX "F", N90, 2"

POLYMERIZED HOT-MIX ASPHALT BINDER COURSE, IL-19, N90, 2 1/4 "

HOT-MIX ASPHALT BASE COURSE, 9 1/2 " SUB-BASE GRANULAR MATERIAL, TYPE B, 12"

* TO BE PAID FOR AS HOT-MIX ASPHALT PAVEMENT (FULL-DEPTH), 13 3/4 "



PLAN	DESIGNED	BY	DATE
	PLOTTED		
	NOTE BOOK		
	NO.		

PROFILE	DESIGNED	BY	DATE
	PLOTTED		
	NOTE BOOK		
	NO.		