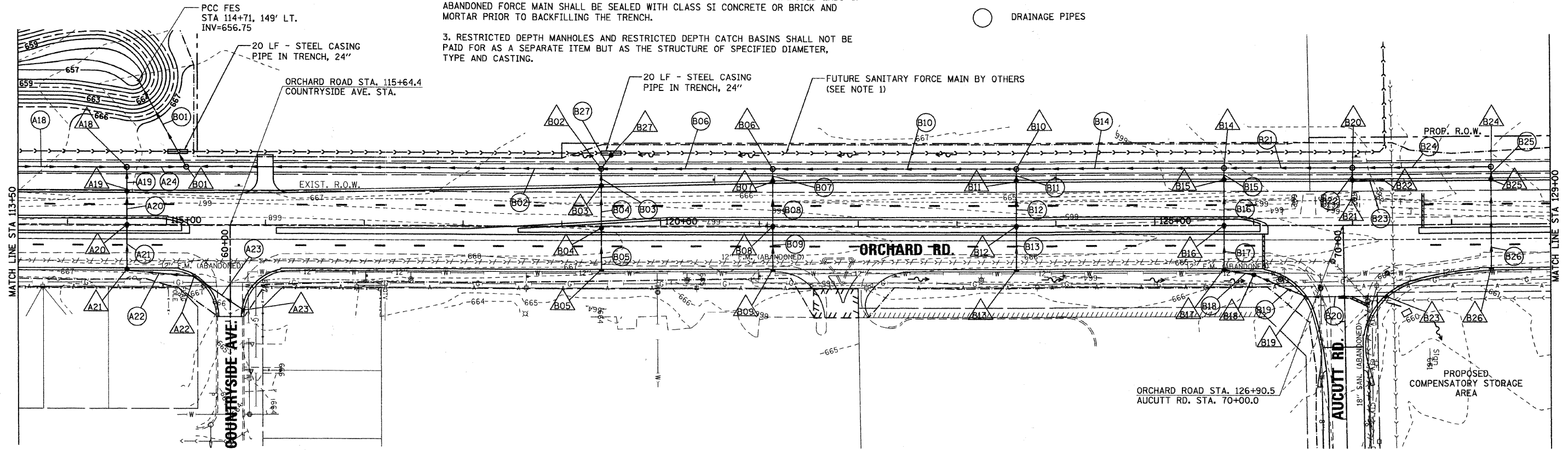
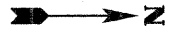
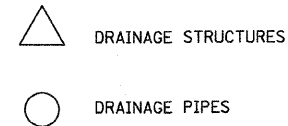


NOTES:

1. FUTURE SANITARY FORCE MAIN SHOWN PER PLANS PROVIDED BY WALTER E. DEUCHLER ASSOCIATES, INC. DATED 06-19-2009.
2. CONTRACTOR SHALL REMOVE PORTIONS OF ABANDONED FORCE MAIN FROM STA 104+89 TO STA. 127+00 WHICH CONFLICT WITH THE PROPOSED IMPROVEMENTS. EXPOSED ENDS OF ABANDONED FORCE MAIN SHALL BE SEALED WITH CLASS SI CONCRETE OR BRICK AND MORTAR PRIOR TO BACKFILLING THE TRENCH.
3. RESTRICTED DEPTH MANHOLES AND RESTRICTED DEPTH CATCH BASINS SHALL NOT BE PAID FOR AS A SEPARATE ITEM BUT AS THE STRUCTURE OF SPECIFIED DIAMETER, TYPE AND CASTING.



DRAINAGE STRUCTURE TABLE													
NO.	STATION	OFFSET (FT)	STRUCTURE TYPE			DIA.	FRAME	RIM	NORTH INVERT	SOUTH INVERT	WEST INVERT	EAST INVERT	RESTRICTED DEPTH
			MH	CB	INLET								
A18	114+60.00	59.00 LT.	A			5'	T-1, CL	667.92	657.57	---	663.59	X	
A19	114+60.00	34.30 LT.	A			4'	T-24 F&G	668.10	---	663.67	663.67	X	
A20	114+60.00	0.00	A			4'	T-8	668.52	---	663.76	663.76		
A21	114+59.96	46.04 RT.	A			4'	T-24 F&G	667.80	663.89	663.89	---	X	
A22	115+27.31	54.40 RT.	A			4'	T-24 F&G	666.90	664.15	664.15	---		
A23	115+78.44	88.71 RT.			A	2'	T-24 F&G	666.00	---	---	---		
B01	115+20.00	63.13 LT.	A			8'	T-1, CL	668.33	656.96	656.96	---		
B02	119+40.00	59.00 LT.	A			5'	T-1, CL	667.44	657.80	659.50	661.04		
B03	119+40.00	41.60 LT.		A		4'	T-24 F&G	667.44	---	661.91	661.91		
B04	119+40.00	2.04 RT.		A		4'	T-8	668.07	---	662.10	662.10		
B05	119+40.07	45.80 RT.			A	2'	T-24 F&G	667.32	---	662.30	---		
B06	121+13.54	59.00 LT.	A			5'	T-1, CL	666.17	658.21	658.21	---	X	
B07	121+13.54	46.33 LT.		A		4'	T-24 F&G	666.27	---	660.86	660.86		
B08	121+13.54	0.00		A		4'	T-8	669.99	---	661.07	661.07		
B09	121+13.61	45.80 RT.			A	2'	T-24 F&G	666.27	---	661.29	---		
B10	123+60.00	59.00 LT.	A			5'	T-1, CL	666.02	659.12	658.62	---	X	
B11	123+60.00	46.90 LT.		A		4'	T-24 F&G	665.22	---	659.81	659.81		
B12	123+60.00	0.00		A		4'	T-8	665.94	---	660.02	660.02		
B13	123+60.06	45.80 RT.			A	2'	T-24 F&G	665.22	---	660.24	---		
B14	125+70.00	59.00 LT.	A			5'	T-1, CL	664.97	659.95	659.95	---	X	
B15	125+70.00	46.84 LT.		A		4'	T-24 F&G	664.17	---	660.02	660.02	X	
B16	125+70.00	0.00		A		4'	T-8	664.89	---	660.15	660.15		
B17	125+70.02	46.13 RT.		A		4'	T-24 F&G	664.17	660.28	---	---	X	
B18	126+00.00	51.50 RT.		A		4'	T-8	664.00	660.36	660.36	---	X	
B19	126+52.96	74.86 RT.		A		4'	T-24 F&G	663.20	660.64	660.64	---		
B20	127+00.00	59.00 LT.	A			4'	T-1, CL	664.63	660.58	660.33	---	X	
B21	127+00.00	46.26 LT.		A		4'	T-24 F&G	663.83	660.89	---	660.33	X	
B22	127+30.00	46.26 LT.			A	2'	T-24 F&G	663.85	---	661.03	---	X	
B23	127+33.38	74.53 RT.			A	2'	T-24 F&G	663.10	---	660.95	---	X	
B24	128+40.00	59.00 LT.	A			4'	T-1, CL	664.18	---	661.12	---	X	
B25	128+40.00	46.24 LT.		A		4'	T-24 F&G	664.22	---	661.20	661.45	X	
B26	128+39.95	46.16 RT.			A	2'	T-24 F&G	664.22	---	661.89	---		
B27	119+50.00	73.00 LT.		A		4'	T-8	665.00	---	---	660.00		

PIPE TABLE					
NO.	STRUCTURE - STRUCTURE	TYPE	DIA.	LIN. FT.	T.B. CU. YD.
A18	A14 TO A18	2	24"	157	279.93
A19	A18 TO A19	2	12"	25	
A20	A19 TO A20	2	12"	34	23.66
A21	A20 TO A21	2	12"	46	30.54
A22	A21 TO A22	1	12"	92	
A23	A22 TO A23	1	12"	34	7.31
A24	A18 TO B01	2	24"	60	219.56
B01	OUTLET TO B01	2	42"	101	
B02	B01 TO B02	2	36"	420	824.63
B03	B02 TO B03	2	15"	17	
B04	B03 TO B04	2	12"	44	39.07
B05	B04 TO B05	2	12"	44	37.66
B06	B06 TO B02	2	36"	174	305.37
B07	B06 TO B07	2	15"	13	
B08	B07 TO B08	2	12"	46	51.20
B09	B08 TO B09	2	12"	46	49.73
B10	B06 TO B10	2	30"	246	362.36
B11	B10 TO B11	2	15"	12	
B12	B11 TO B12	2	12"	47	41.74
B13	B12 TO B13	2	12"	46	39.38
B14	B10 TO B14	2	24"	210	220.29
B15	B14 TO B15	2	18"	12	
B16	B15 TO B16	2	18"	47	33.84
B17	B16 TO B17	2	18"	46	31.46
B18	B17 TO B18	1	15"	30	
B19	B18 TO B19	1	12"	58	
B20	B19 TO B23	1	12"	81	17.42
B21	B14 TO B20	2	18"	130	98.28
B22	B20 TO B21	2	12"	13	
B23	B21 TO B22	1	12"	30	8.34
B24	B20 TO B24	1	15"	140	52.50
B25	B24 TO B25	1	15"	13	
B26	B25 TO B26	1	12"	92	21.71
B27	B02 TO B27	2	12"	17	

