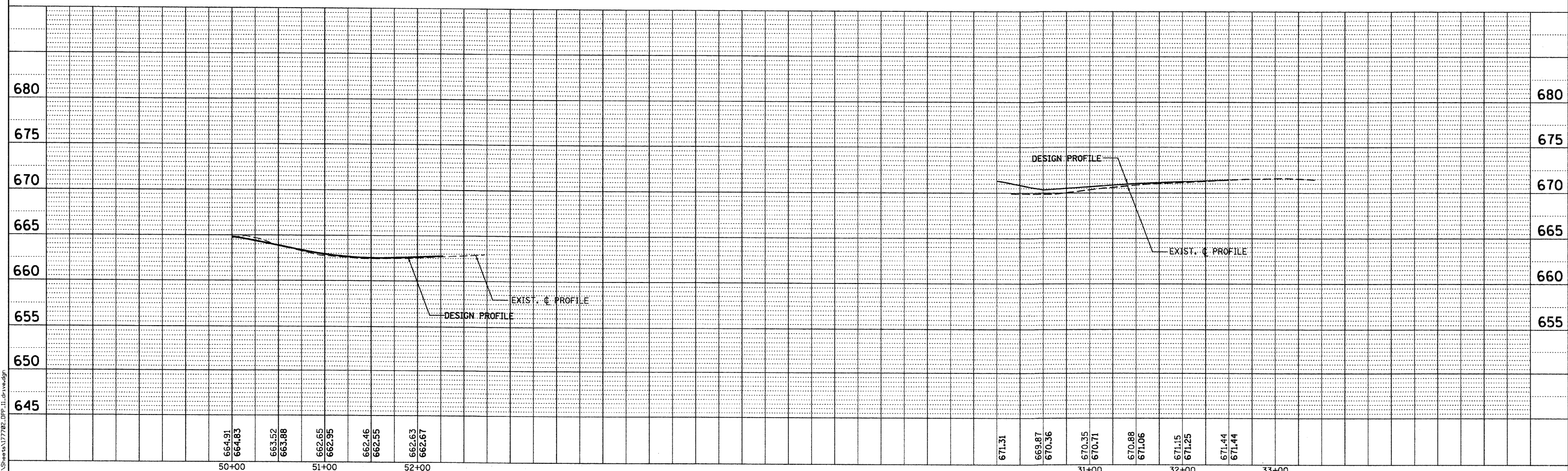
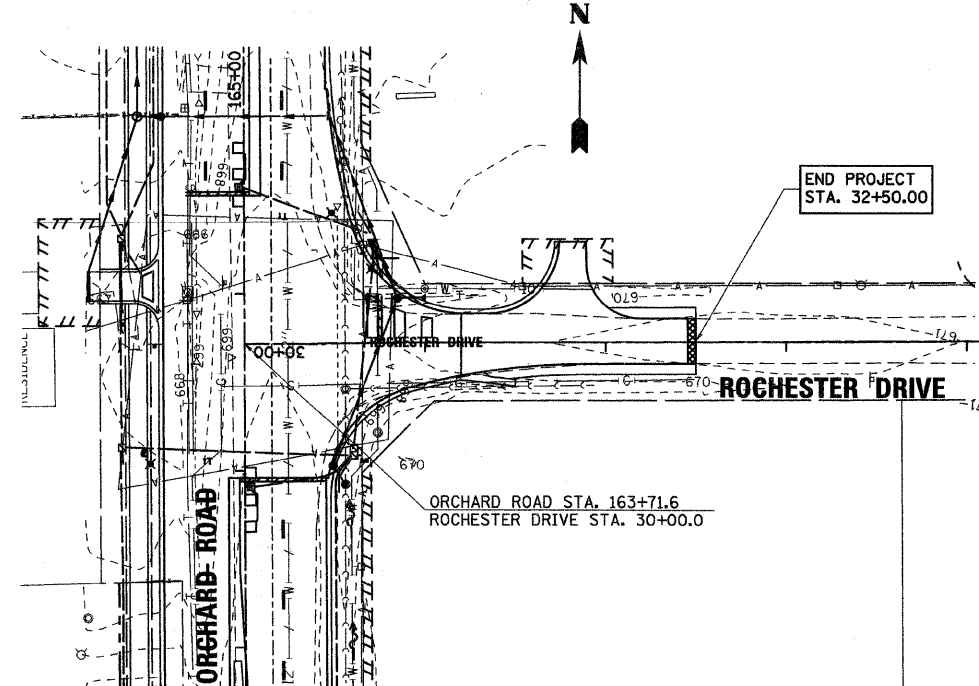
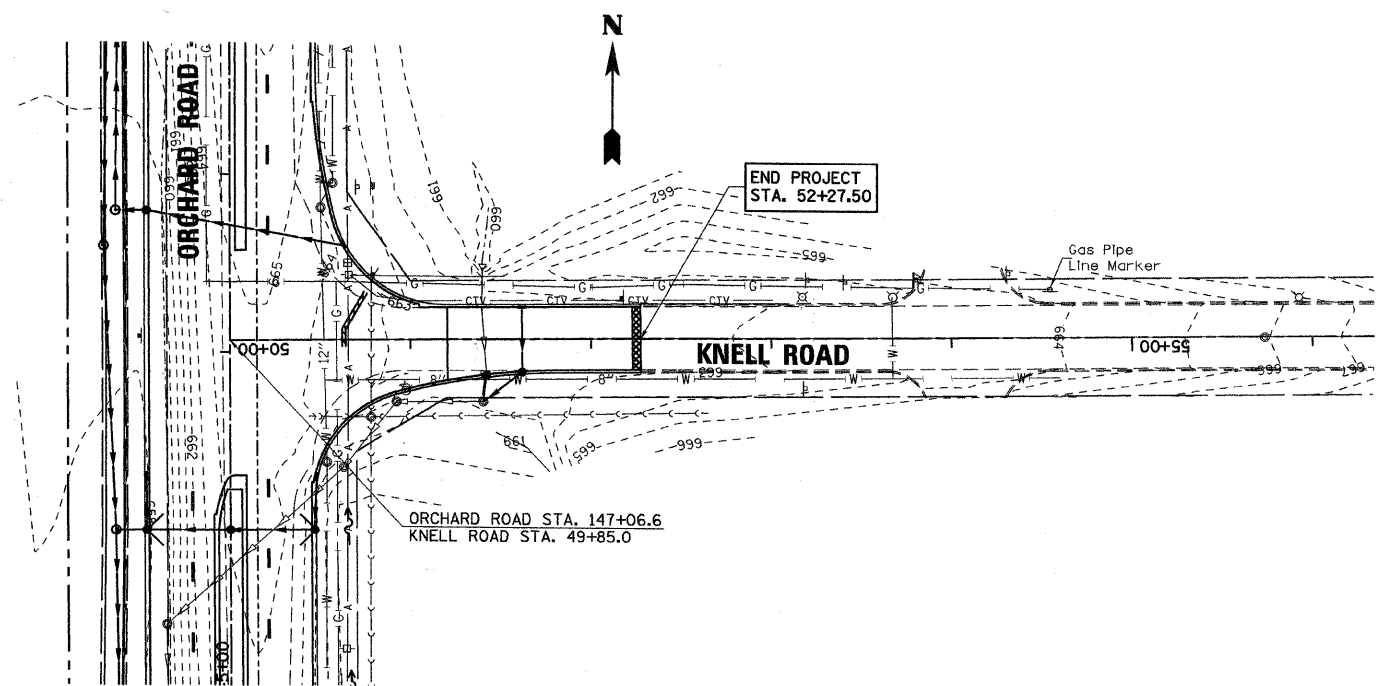


PLAN	REVISIONS	DATE
NO.	BY	
NOTE BOOK	ALIGNED CHECKED	
NO.	PLOTTED	
	DATE	

PROFILE	REVISIONS	DATE
NO.	BY	
NOTE BOOK	GRADES CHECKED	
NO.	STRUCTURE	
	NOTATION CHVD	



58.0003 / JN.  
 dreads  
 12/17/2010  
 C:\117782\CAD\Sheet\17782\_DRP\_11.dwg

**rjngroup**  
 Excellence through Ownership  
 200 West Front Street  
 Wheaton, IL 60187

DESIGNED - MK	REVISED -
DRAWN - DW	REVISED -
CHECKED - MH	REVISED -
DATE - 12/20/2010	REVISED -

**KANE COUNTY**  
**DIVISION OF TRANSPORTATION**  
**ORCHARD ROAD RECONSTRUCTION**

**UNITED DRIVE AND ROCHESTER DRIVE**  
**DRAINAGE PLAN AND PROFILE**  
 SCALE: 1" = 50' SHEET NO. 8 OF 11 SHEETS STA. TO STA.

F.A.P. RTE. 336	SECTION 99-00232-01-WR	COUNTY KANE	TOTAL SHEETS 215	SHEET NO. 67
CONTRACT NO. 63541			ILLINOIS FED. AID PROJECT	